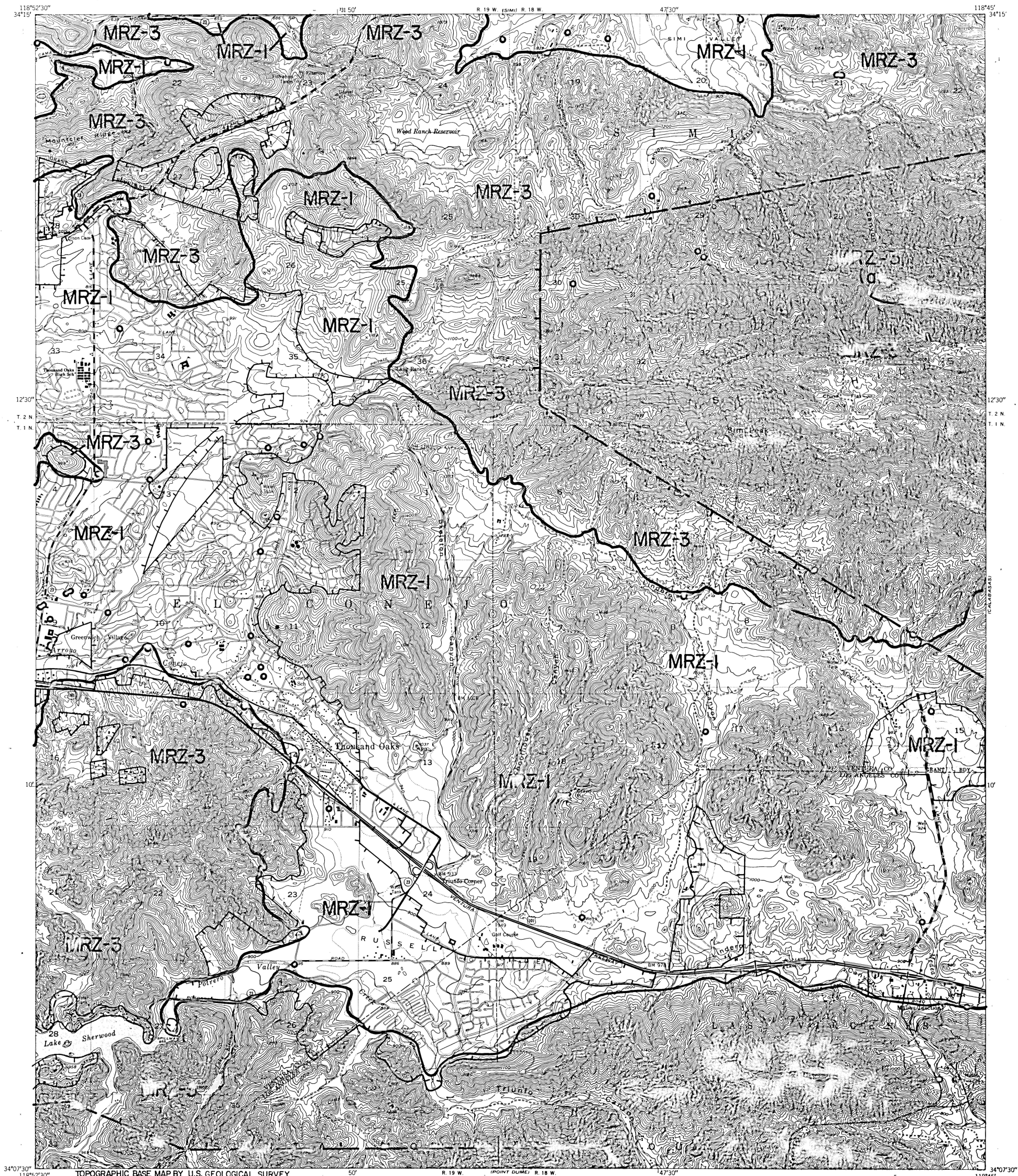




CALIFORNIA DIVISION OF MINES AND GEOLOGY
JAMES F. DAVIS, STATE GEOLOGIST

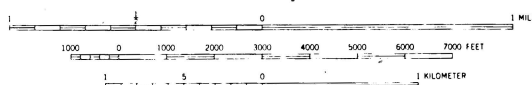
STATE OF CALIFORNIA
THE RESOURCES AGENCY
DEPARTMENT OF CONSERVATION

THOUSAND OAKS QUADRANGLE
SPECIAL REPORT 145 PLATE 118



TOPOGRAPHIC BASE MAP BY U.S. GEOLOGICAL SURVEY
Reduced from 1:24,000

EXPLANATION



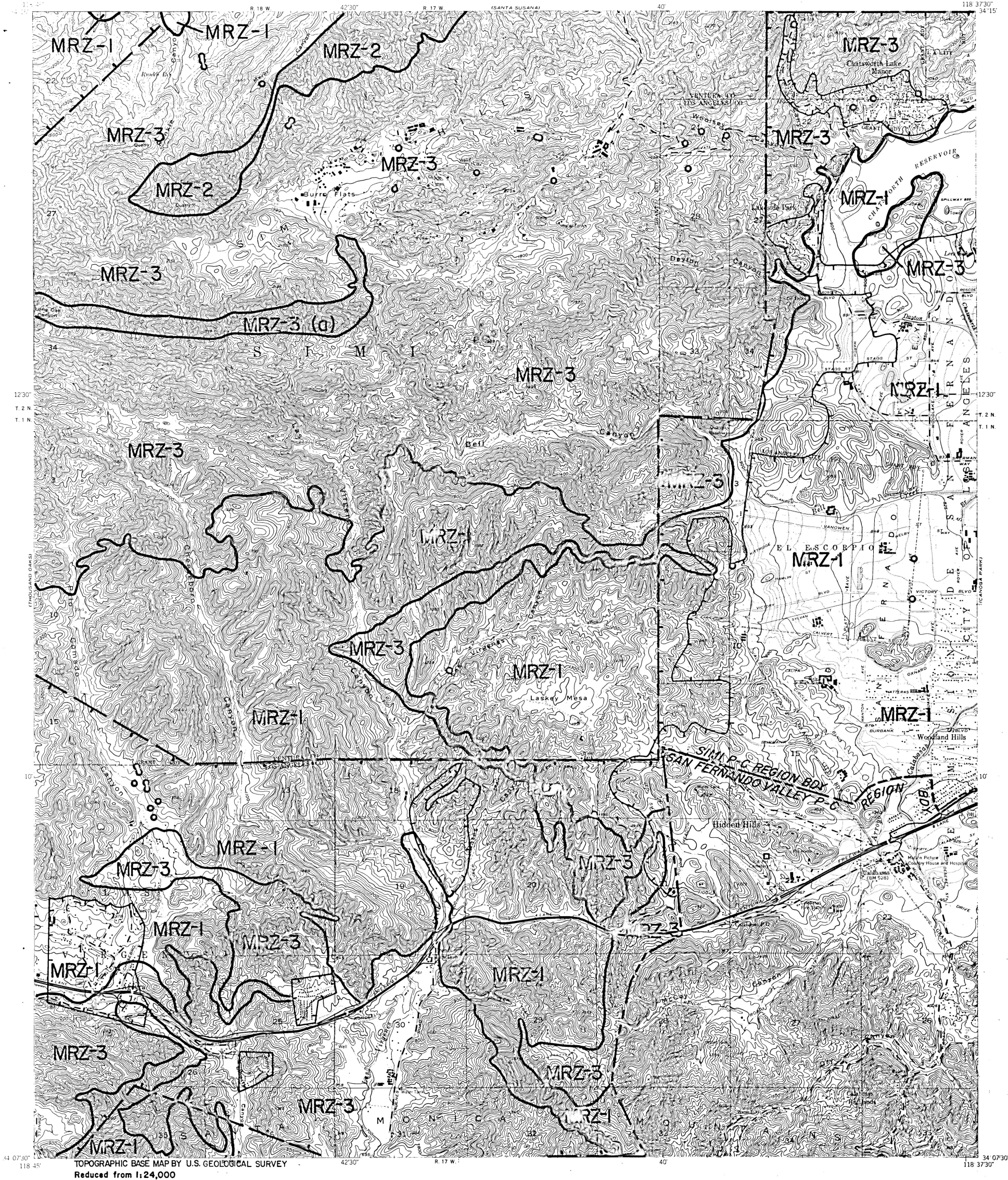
THOUSAND OAKS, CALIF.

- Drill hole
- OUTER BOUNDARY OF AREAS SUBJECT TO URBANIZATION
Boundaries established from data supplied by the Office of Planning and Research with modifications developed from information supplied by local government and other sources. Hachures lie within area undergoing urbanization.
- EXISTING URBAN BOUNDARIES
Boundaries established by the Office of Planning and Research and by data supplied by local government agencies and other sources to reflect present conditions. Hachures lie within urban area.
- PRODUCTION-CONSUMPTION REGION BOUNDARY
(see text for discussion)
- MINERAL RESOURCE ZONE BOUNDARIES
- MRZ-1 Areas where adequate information indicates that no significant mineral deposits are present, or where it is judged that little likelihood exists for their presence.
- MRZ-2 Areas where adequate information indicates that significant mineral deposits are present or where it is judged that a high likelihood for their presence exists.
- MRZ-3 Areas containing mineral deposits the significance of which cannot be evaluated from available data.
- MRZ-4 Areas where available information is inadequate for assignment to any other MRZ zone.
- See text for additional explanation of MRZ Symbols.

MINERAL LAND CLASSIFICATION MAP AGGREGATE RESOURCES ONLY

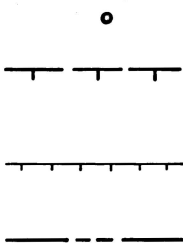
PREPARED IN COMPLIANCE WITH THE SURFACE MINING
AND RECLAMATION ACT OF 1975, ARTICLE 4, SECTION 2761

James F. Davis
STATE GEOLOGIST

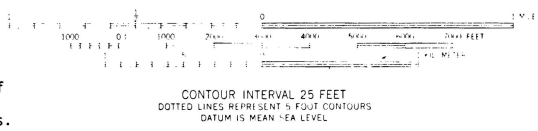


TOPOGRAPHIC BASE MAP BY U.S. GEOLOGICAL SURVEY
Reduced from 1:24,000

EXPLANATION



- Drill hole
OUTER BOUNDARY OF AREAS SUBJECT TO URBANIZATION
Boundaries established from data supplied by the Office of Planning and Research with modifications developed from information supplied by local government and other sources. Hachures lie within area undergoing urbanization.
- EXISTING URBAN BOUNDARIES
Boundaries established by the Office of Planning and Research and by data supplied by local government agencies and other sources to reflect present conditions. Hachures lie within urban area.
- PRODUCTION-CONSUMPTION REGION BOUNDARY
(see text for discussion)
- MINERAL RESOURCE ZONE BOUNDARIES
- MRZ-1 Areas where adequate information indicates that no significant mineral deposits are present, or where it is judged that little likelihood exists for their presence.
- MRZ-2 Areas where adequate information indicates that significant mineral deposits are present or where it is judged that a high likelihood for their presence exists.
- MRZ-3 Areas containing mineral deposits the significance of which cannot be evaluated from available data.
- MRZ-4 Areas where available information is inadequate for assignment to any other MRZ zone.
- See text for additional explanation of MRZ Symbols.

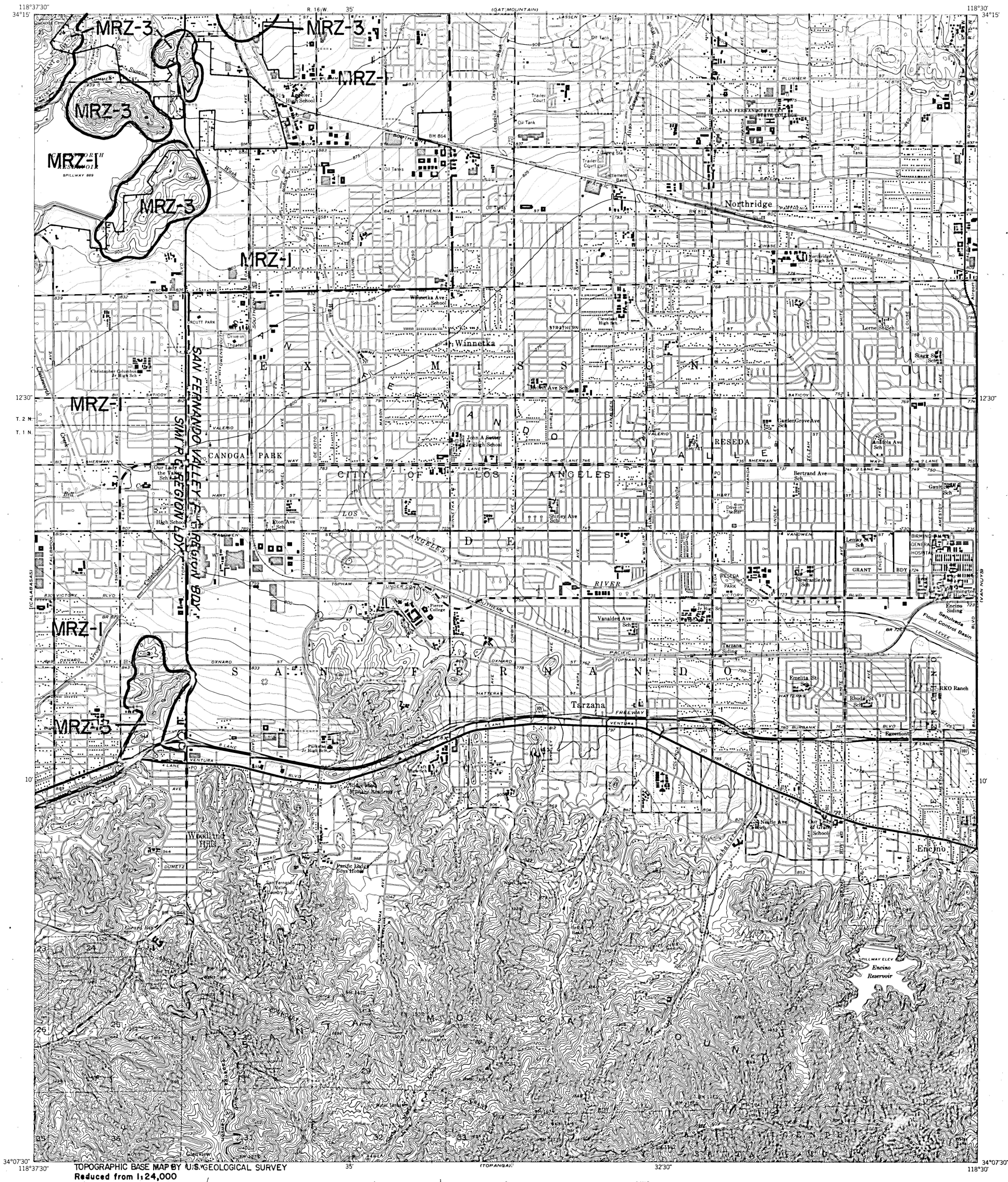


CALABASAS, CALIF.

MINERAL LAND CLASSIFICATION MAP
AGGREGATE RESOURCES ONLY

PREPARED IN COMPLIANCE WITH THE SURFACE MINING
AND RECLAMATION ACT OF 1975, ARTICLE 4, SECTION 2761

James F. Davis
STATE GEOLOGIST



TOPOGRAPHIC BASE MAP BY U.S. GEOLOGICAL SURVEY
Reduced from 1:24,000

EXPLANATION

Drill hole
OUTER BOUNDARY OF AREAS SUBJECT TO URBANIZATION
Boundaries established from data supplied by the Office of Planning and Research with modifications developed from information supplied by local government and other sources. Hachures lie within area undergoing urbanization.

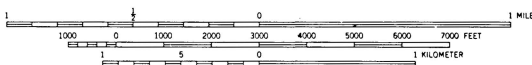
EXISTING URBAN BOUNDARIES
Boundaries established by the Office of Planning and Research and by data supplied by local government agencies and other sources to reflect present conditions. Hachures lie within urban area.

PRODUCTION-CONSUMPTION REGION BOUNDARY
(see text for discussion)

MINERAL RESOURCE ZONE BOUNDARIES

- MRZ-1 Areas where adequate information indicates that no significant mineral deposits are present, or where it is judged that little likelihood exists for their presence.
- MRZ-2 Areas where adequate information indicates that significant mineral deposits are present or where it is judged that a high likelihood for their presence exists.
- MRZ-3 Areas containing mineral deposits the significance of which cannot be evaluated from available data.
- MRZ-4 Areas where available information is inadequate for assignment to any other MRZ zone.

See text for additional explanation of MRZ Symbols.



CONTOUR INTERVAL 25 FEET
DOTTED LINES REPRESENT 5 FOOT CONTOURS
DATUM IS MEAN SEA LEVEL

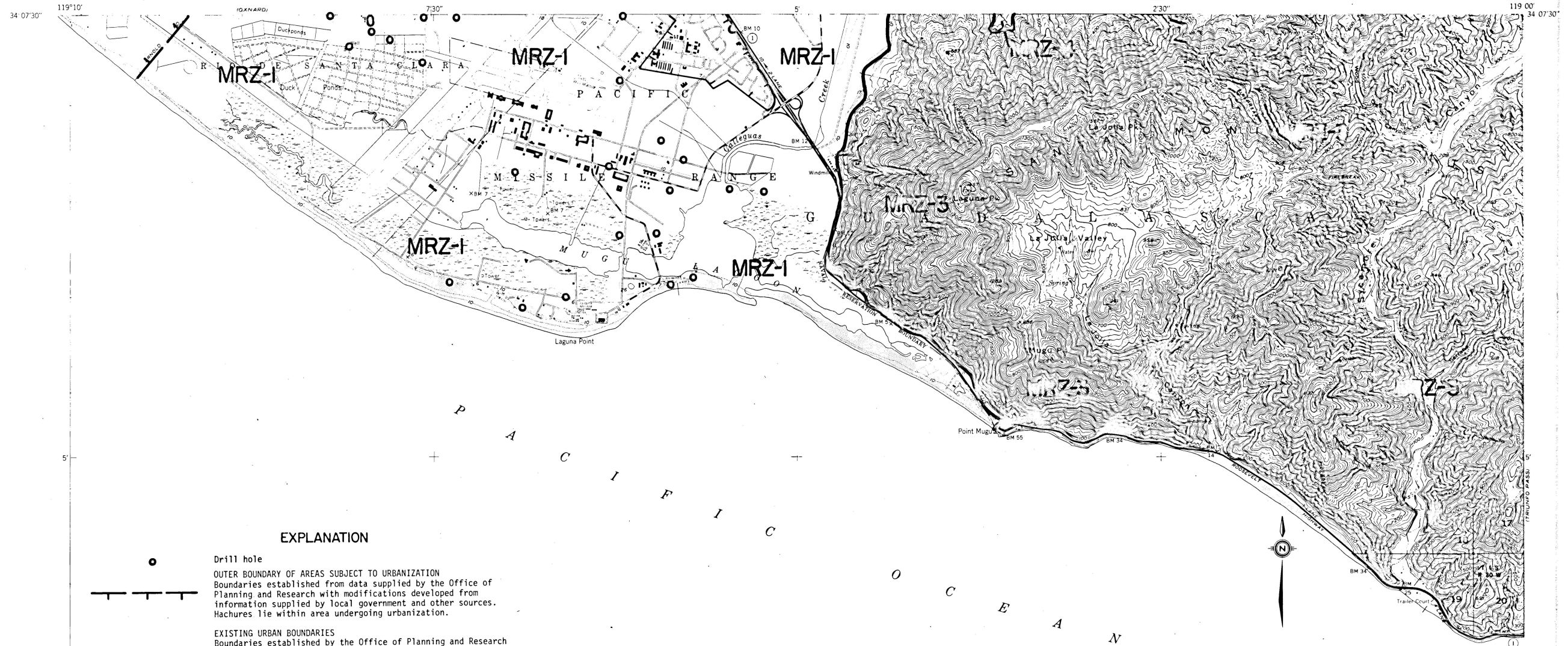


CANOGA PARK, CALIF.

MINERAL LAND CLASSIFICATION MAP AGGREGATE RESOURCES ONLY

PREPARED IN COMPLIANCE WITH THE SURFACE MINING
AND RECLAMATION ACT OF 1975, ARTICLE 4, SECTION 2761

James F. Davis
STATE GEOLOGIST



EXPLANATION

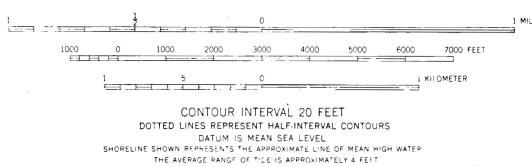
- Drill hole
 - OUTER BOUNDARY OF AREAS SUBJECT TO URBANIZATION
Boundaries established from data supplied by the Office of Planning and Research with modifications developed from information supplied by local government and other sources. Hachures lie within area undergoing urbanization.
 - EXISTING URBAN BOUNDARIES
Boundaries established by the Office of Planning and Research and by data supplied by local government agencies and other sources to reflect present conditions. Hachures lie within urban area.
 - PRODUCTION-CONSUMPTION REGION BOUNDARY
(see text for discussion)
 - MINERAL RESOURCE ZONE BOUNDARIES
 - MRZ-1 Areas where adequate information indicates that no significant mineral deposits are present, or where it is judged that little likelihood exists for their presence.
 - MRZ-2 Areas where adequate information indicates that significant mineral deposits are present or where it is judged that a high likelihood for their presence exists.
 - MRZ-3 Areas containing mineral deposits the significance of which cannot be evaluated from available data.
 - MRZ-4 Areas where available information is inadequate for assignment to any other MRZ zone.
- See text for additional explanation of MRZ Symbols.

MINERAL LAND CLASSIFICATION MAP
AGGREGATE RESOURCES ONLY

PREPARED IN COMPLIANCE WITH THE SURFACE MINING
AND RECLAMATION ACT OF 1975, ARTICLE 4, SECTION 2761

James F. Davis
STATE GEOLOGIST

TOPOGRAPHIC BASE MAP BY U.S. GEOLOGICAL SURVEY
Reduced from 1:24,000

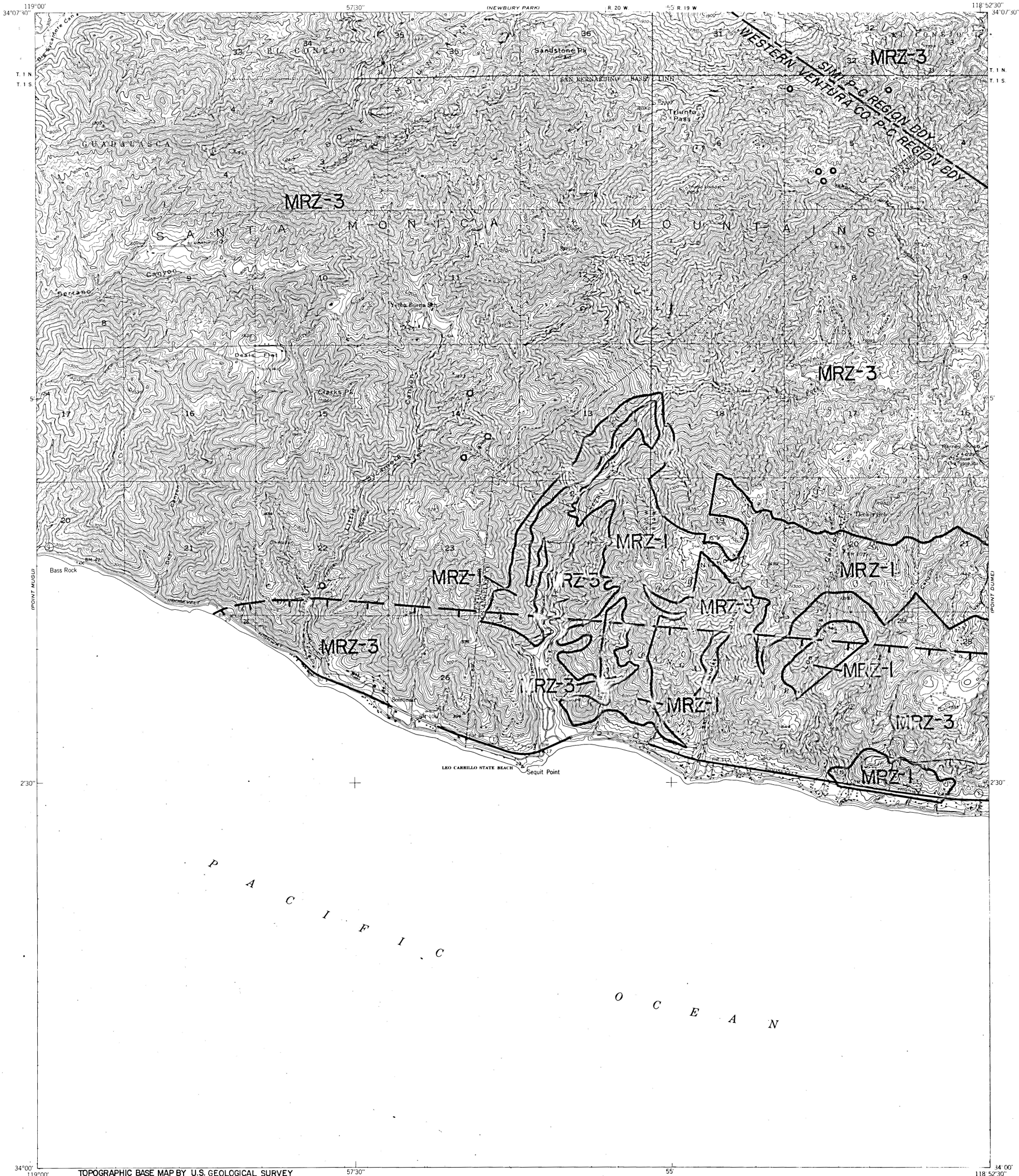




CALIFORNIA DIVISION OF MINES AND GEOLOGY
JAMES F. DAVIS, STATE GEOLOGIST

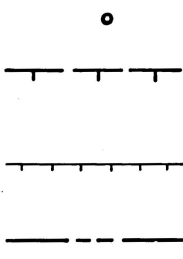
STATE OF CALIFORNIA
THE RESOURCES AGENCY
DEPARTMENT OF CONSERVATION

TRIUNFO PASS QUADRANGLE
SPECIAL REPORT 145 PLATE 122

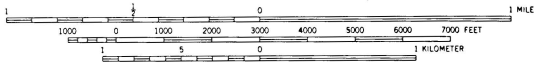


TOPOGRAPHIC BASE MAP BY U.S. GEOLOGICAL SURVEY
Reduced from 1:24,000

EXPLANATION



- Drill hole
- OUTER BOUNDARY OF AREAS SUBJECT TO URBANIZATION
Boundaries established from data supplied by the Office of Planning and Research with modifications developed from information supplied by local government and other sources. Hachures lie within area undergoing urbanization.
- EXISTING URBAN BOUNDARIES
Boundaries established by the Office of Planning and Research and by data supplied by local government agencies and other sources to reflect present conditions. Hachures lie within urban area.
- PRODUCTION-CONSUMPTION REGION BOUNDARY
(see text for discussion)
- MINERAL RESOURCE ZONE BOUNDARIES
- MRZ-1 Areas where adequate information indicates that no significant mineral deposits are present, or where it is judged that little likelihood exists for their presence.
- MRZ-2 Areas where adequate information indicates that significant mineral deposits are present or where it is judged that a high likelihood for their presence exists.
- MRZ-3 Areas containing mineral deposits the significance of which cannot be evaluated from available data.
- MRZ-4 Areas where available information is inadequate for assignment to any other MRZ zone.
- See text for additional explanation of MRZ Symbols.



CONTOUR INTERVAL 25 FEET
DATUM IS MEAN SEA LEVEL
SHORELINE SHOWN REPRESENTS THE APPROXIMATE LINE OF MEAN HIGH WATER
THE AVERAGE RANGE OF TIDE IS APPROXIMATELY 4 FEET



TRIUNFO PASS, CALIF.

MINERAL LAND CLASSIFICATION MAP AGGREGATE RESOURCES ONLY

PREPARED IN COMPLIANCE WITH THE SURFACE MINING
AND RECLAMATION ACT OF 1975, ARTICLE 4, SECTION 2761

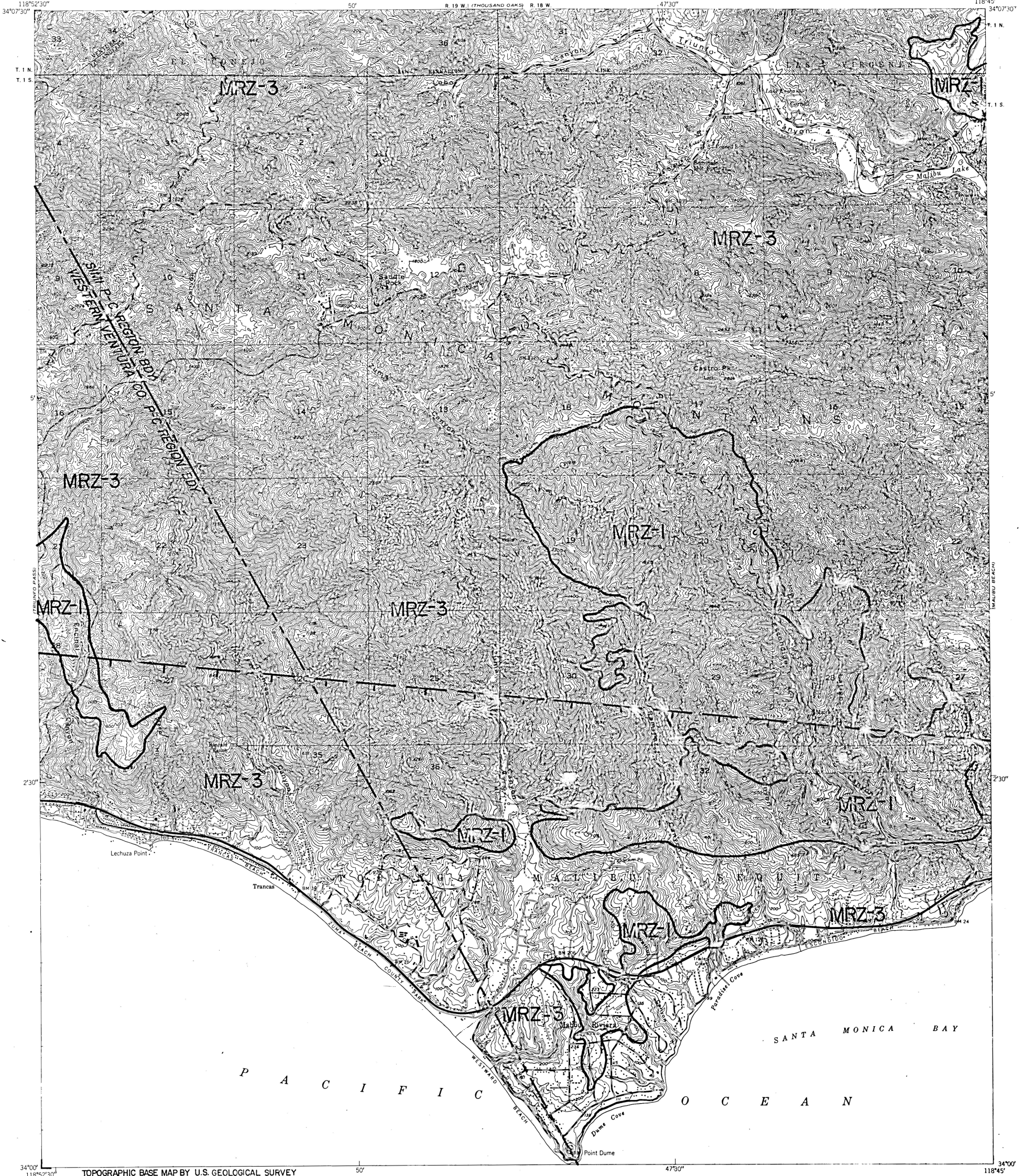
James F. Davis
STATE GEOLOGIST



CALIFORNIA DIVISION OF MINES AND GEOLOGY
JAMES F. DAVIS, STATE GEOLOGIST

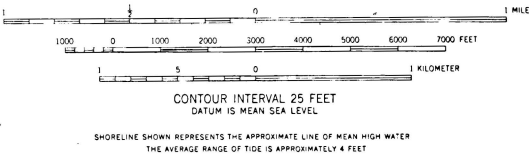
STATE OF CALIFORNIA
THE RESOURCES AGENCY
DEPARTMENT OF CONSERVATION

POINT DUME QUADRANGLE
SPECIAL REPORT 145 PLATE 1.23



EXPLANATION

- Drill hole
 - OUTER BOUNDARY OF AREAS SUBJECT TO URBANIZATION
Boundaries established from data supplied by the Office of Planning and Research with modifications developed from information supplied by local government and other sources. Hachures lie within area undergoing urbanization.
 - EXISTING URBAN BOUNDARIES
Boundaries established by the Office of Planning and Research and by data supplied by local government agencies and other sources to reflect present conditions. Hachures lie within urban area.
 - PRODUCTION-CONSUMPTION REGION BOUNDARY
(see text for discussion)
 - MINERAL RESOURCE ZONE BOUNDARIES
 - MRZ-1 Areas where adequate information indicates that no significant mineral deposits are present, or where it is judged that little likelihood exists for their presence.
 - MRZ-2 Areas where adequate information indicates that significant mineral deposits are present or where it is judged that a high likelihood for their presence exists.
 - MRZ-3 Areas containing mineral deposits the significance of which cannot be evaluated from available data.
 - MRZ-4 Areas where available information is inadequate for assignment to any other MRZ zone.
- See text for additional explanation of MRZ Symbols.



POINT DUME, CALIF.

MINERAL LAND CLASSIFICATION MAP AGGREGATE RESOURCES ONLY

PREPARED IN COMPLIANCE WITH THE SURFACE MINING
AND RECLAMATION ACT OF 1975, ARTICLE 4, SECTION 2761

James F. Davis
STATE GEOLOGIST

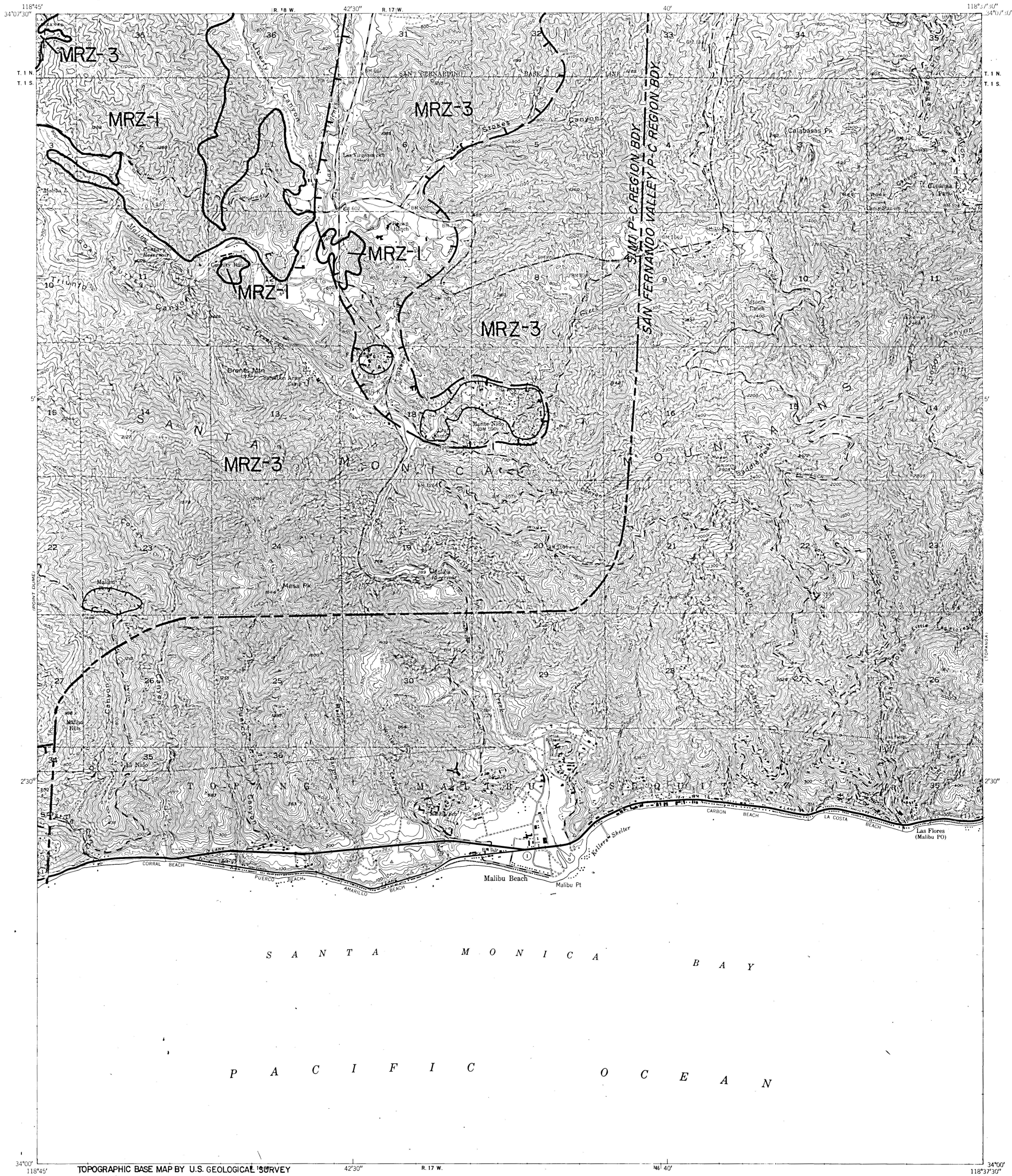


CALIFORNIA DIVISION OF MINES AND GEOLOGY
JAMES F. DAVIS, STATE GEOLOGIST

STATE OF CALIFORNIA
THE RESOURCES AGENCY
DEPARTMENT OF CONSERVATION

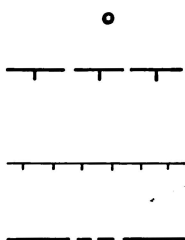
MALIBU BEACH QUADRANGLE

SPECIAL REPORT 145 PLATE 1.24

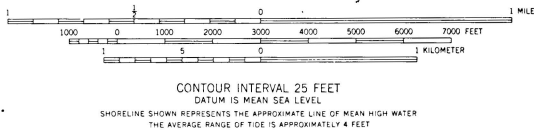


TOPOGRAPHIC BASE MAP BY U.S. GEOLOGICAL SURVEY
Reduced from 1:24,000

EXPLANATION



- Drill hole
- OUTER BOUNDARY OF AREAS SUBJECT TO URBANIZATION
Boundaries established from data supplied by the Office of Planning and Research with modifications developed from information supplied by local government and other sources. Hachures lie within area undergoing urbanization.
- EXISTING URBAN BOUNDARIES
Boundaries established by the Office of Planning and Research and by data supplied by local government agencies and other sources to reflect present conditions. Hachures lie within urban area.
- PRODUCTION-CONSUMPTION REGION BOUNDARY
(see text for discussion)
- MINERAL RESOURCE ZONE BOUNDARIES
- MRZ-1 Areas where adequate information indicates that no significant mineral deposits are present, or where it is judged that little likelihood exists for their presence.
- MRZ-2 Areas where adequate information indicates that significant mineral deposits are present or where it is judged that a high likelihood for their presence exists.
- MRZ-3 Areas containing mineral deposits the significance of which cannot be evaluated from available data.
- MRZ-4 Areas where available information is inadequate for assignment to any other MRZ zone.
- See text for additional explanation of MRZ Symbols.



CONTOUR INTERVAL 25 FEET

DATUM IS MEAN SEA LEVEL

SHORELINE SHOWN REPRESENTS THE APPROXIMATE LINE OF MEAN HIGH WATER

THE AVERAGE RANGE OF TIDE IS APPROXIMATELY 4 FEET



MALIBU BEACH, CALIF.

MINERAL LAND CLASSIFICATION MAP AGGREGATE RESOURCES ONLY

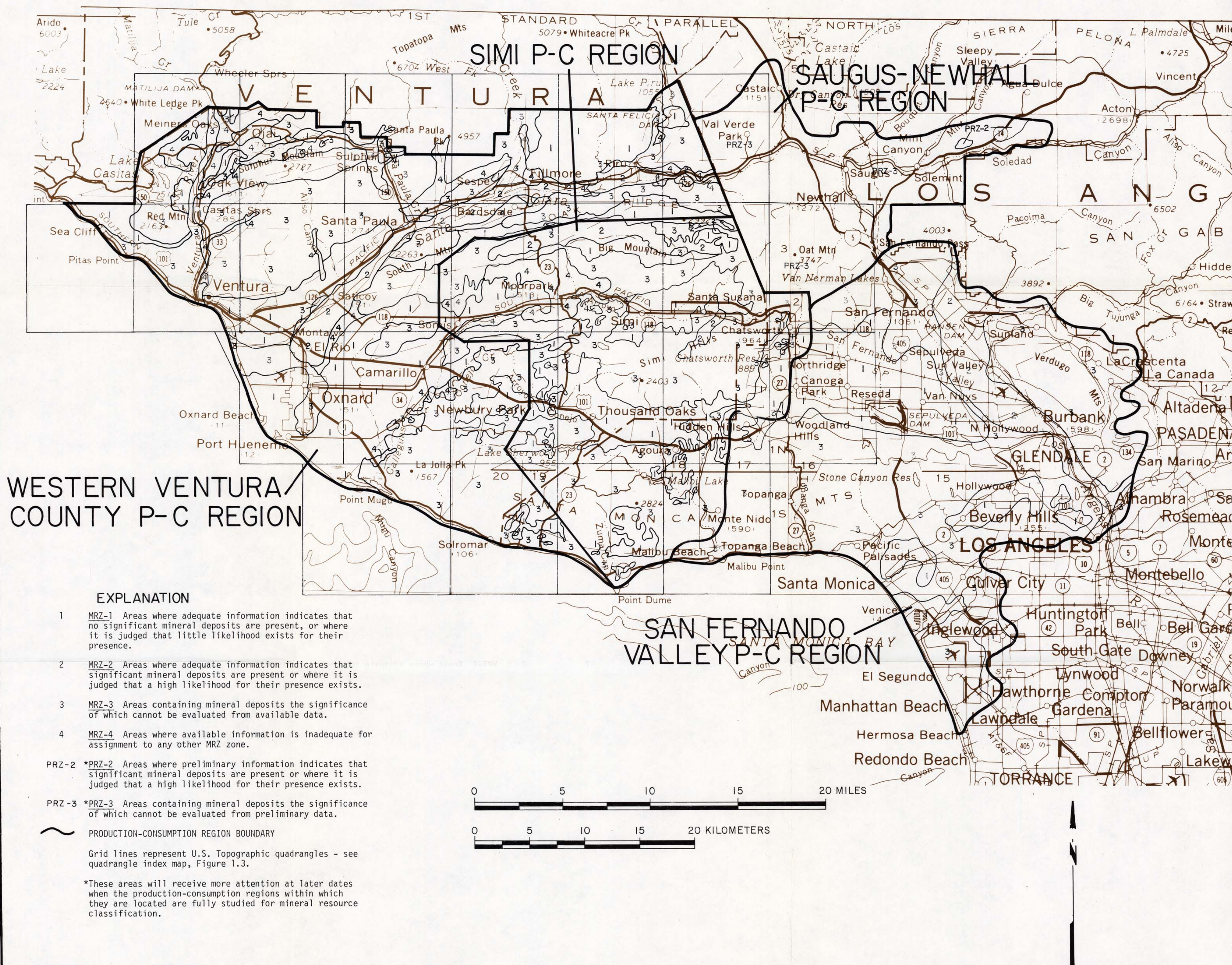
PREPARED IN COMPLIANCE WITH THE SURFACE MINING
AND RECLAMATION ACT OF 1975, ARTICLE 4, SECTION 2761

James F. Davis
STATE GEOLOGIST

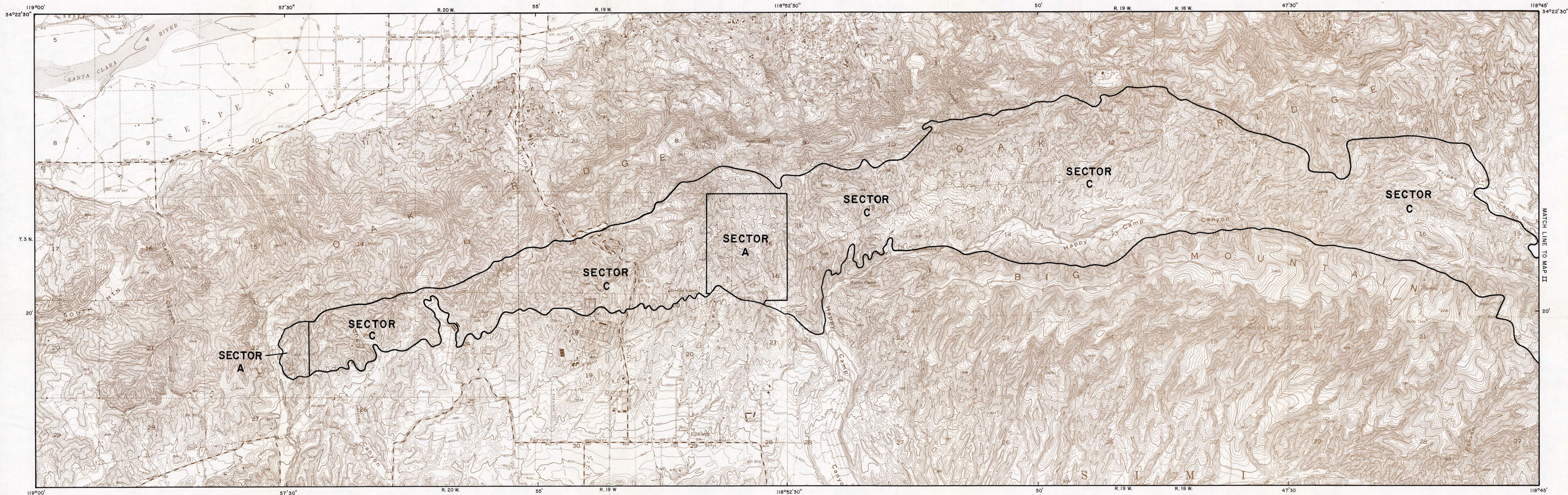
MINERAL LAND CLASSIFICATION OF VENTURA COUNTY GENERALIZED AGGREGATE RESOURCE CLASSIFICATION MAP SIMI, WESTERN VENTURA COUNTY AND ADJACENT PRODUCTION-CONSUMPTION REGIONS

By: T.P. ANDERSON, R.C. LOYD, E.W. KIESSLING, S.L. KOHLER, AND R.V. MILLER

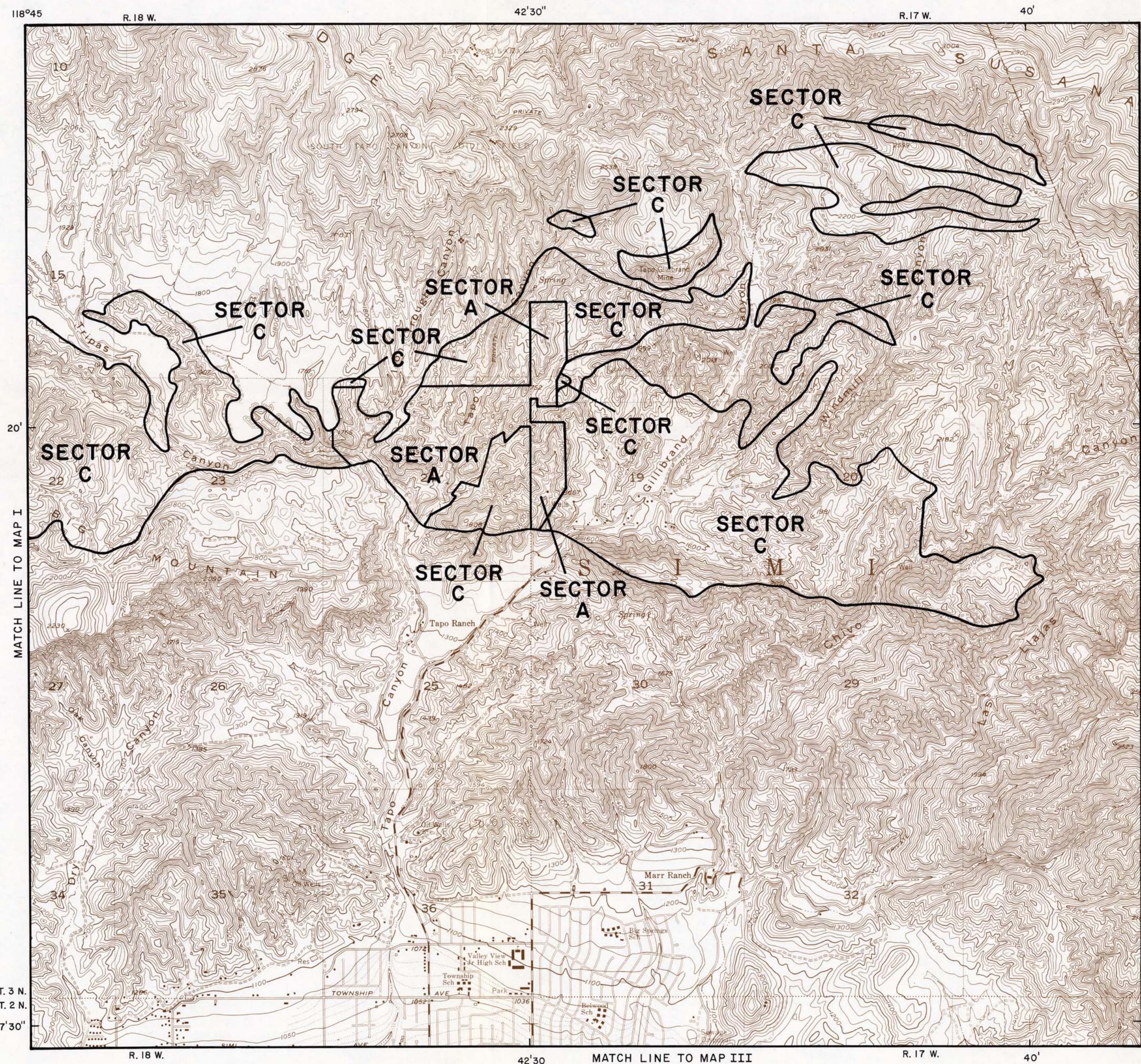
1981



MAP I



MAP II

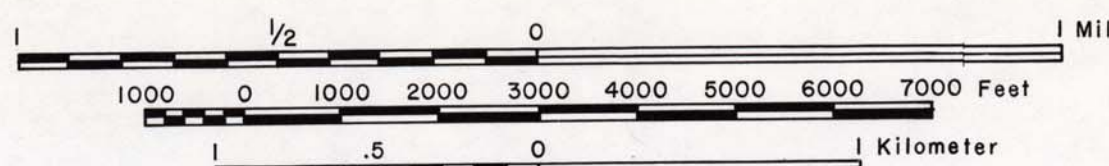


Mineral Land Classification
of Ventura County
SIMI VALLEY
PRODUCTION DISTRICT
Aggregate Resource Sectors A-C

by

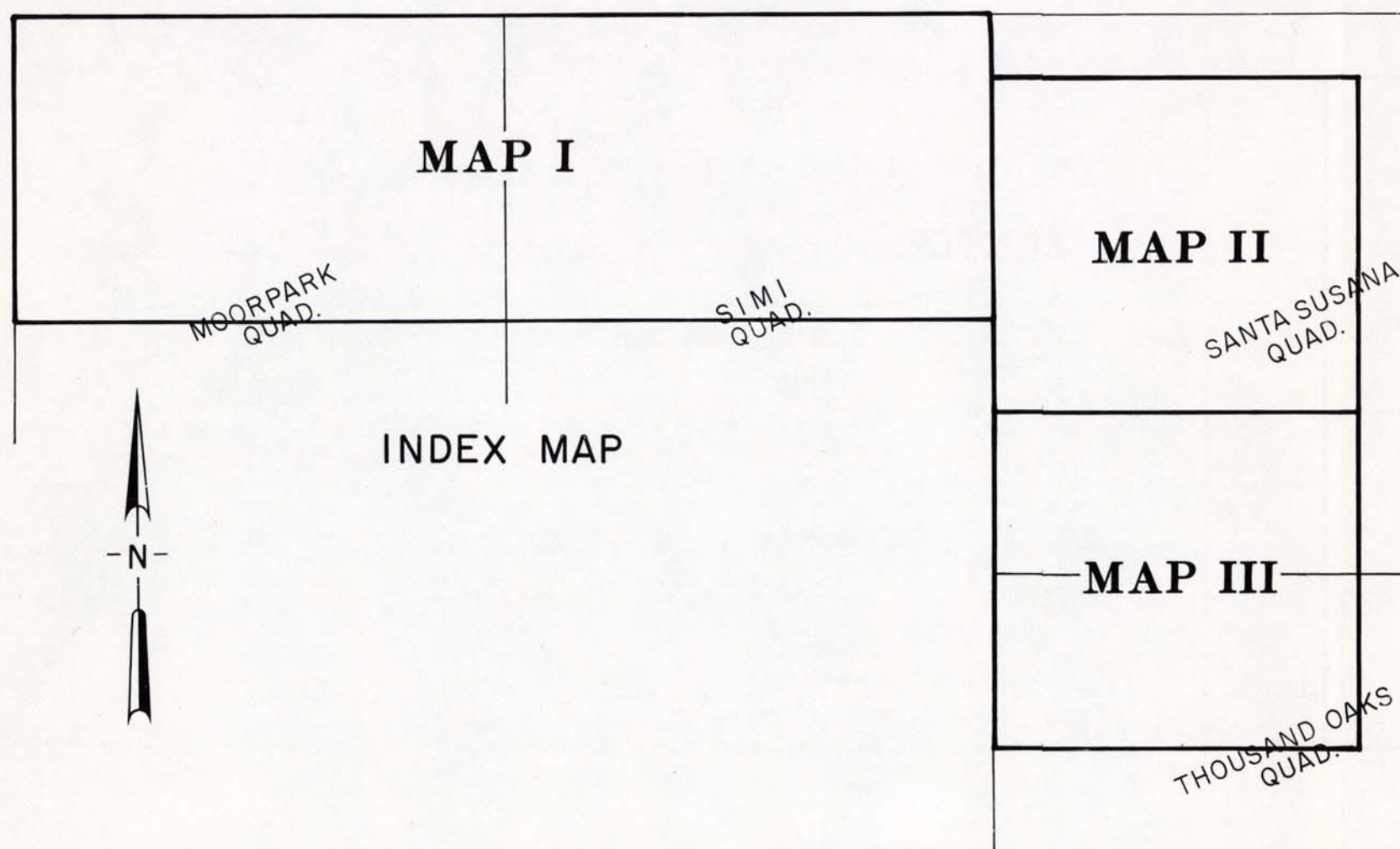
T.P. Anderson, R.C. Loyd, E.W. Kiessling, S.L. Kohler, R.V. Miller

1981

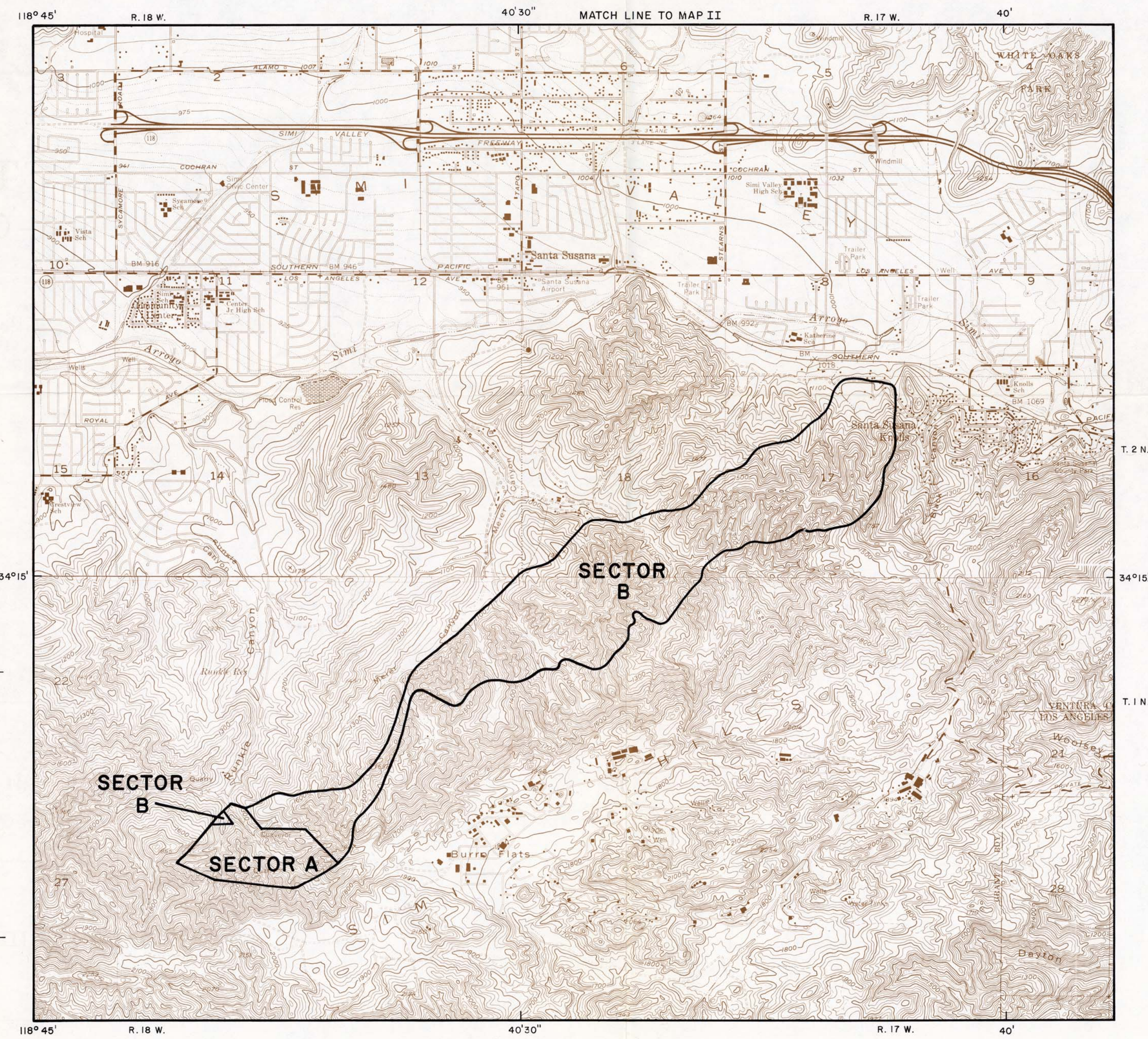


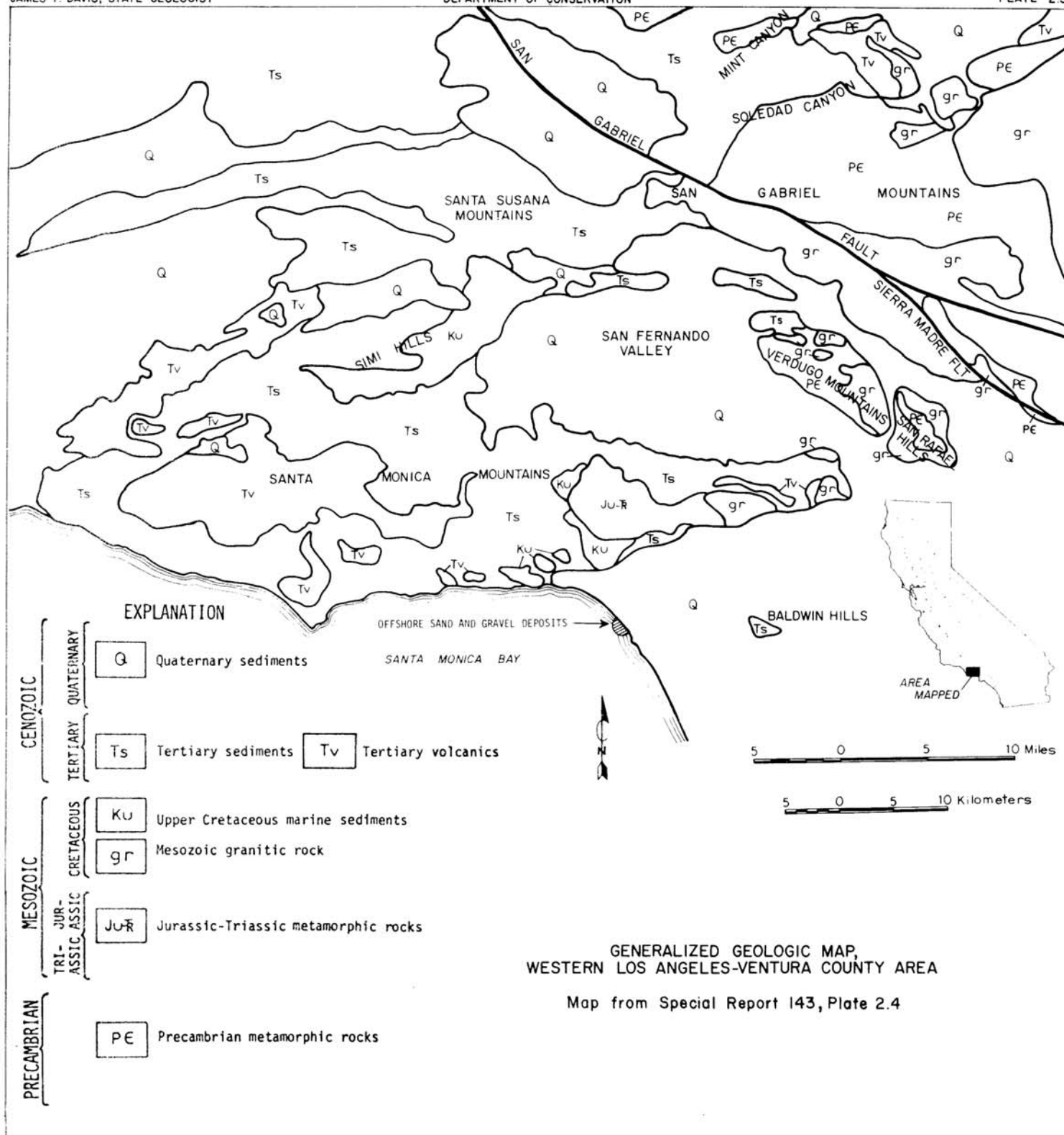
SCALE 1:24,000

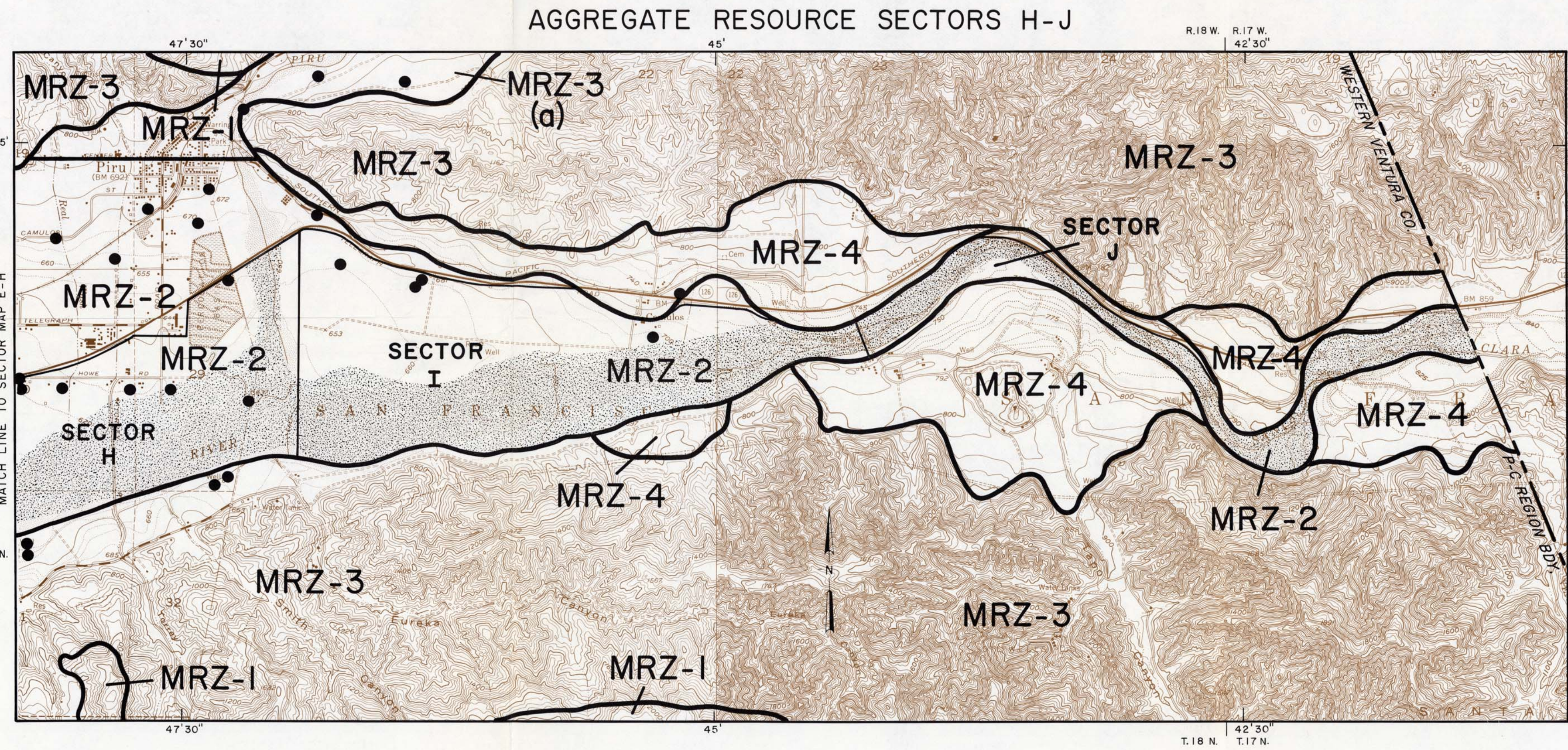
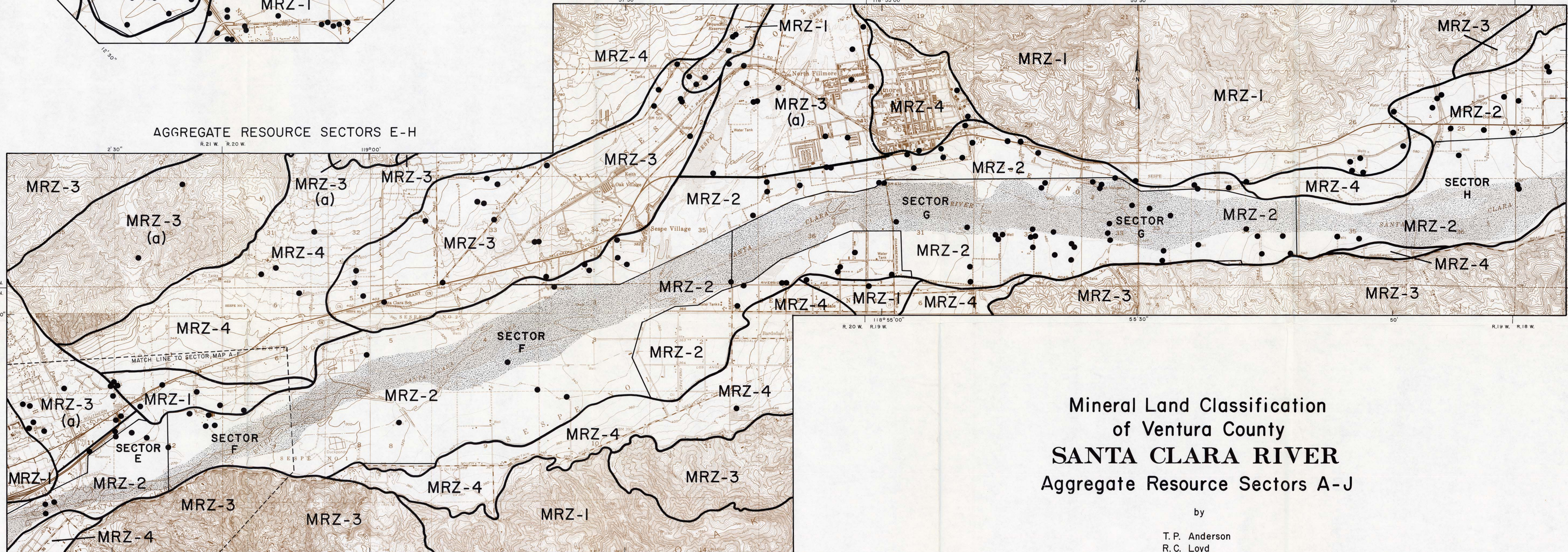
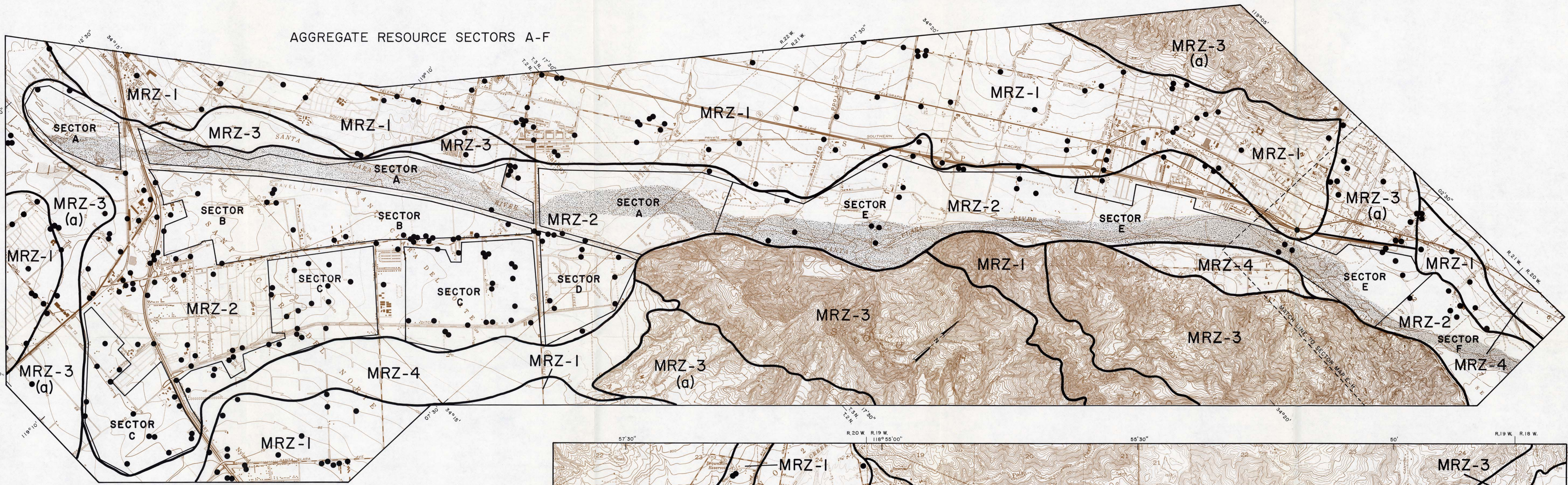
Area underlain by extractable sand and gravel.



MAP III



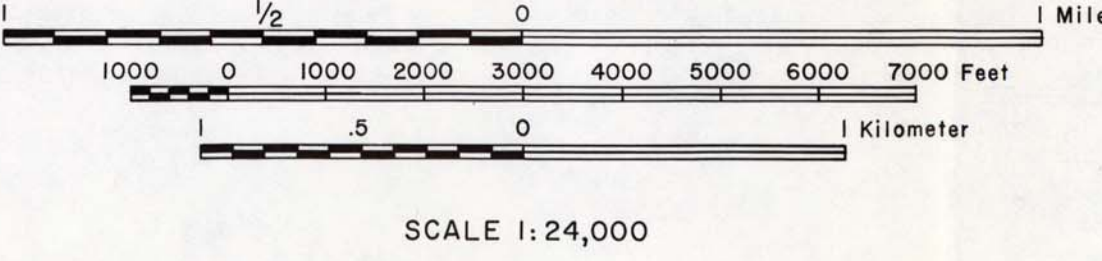




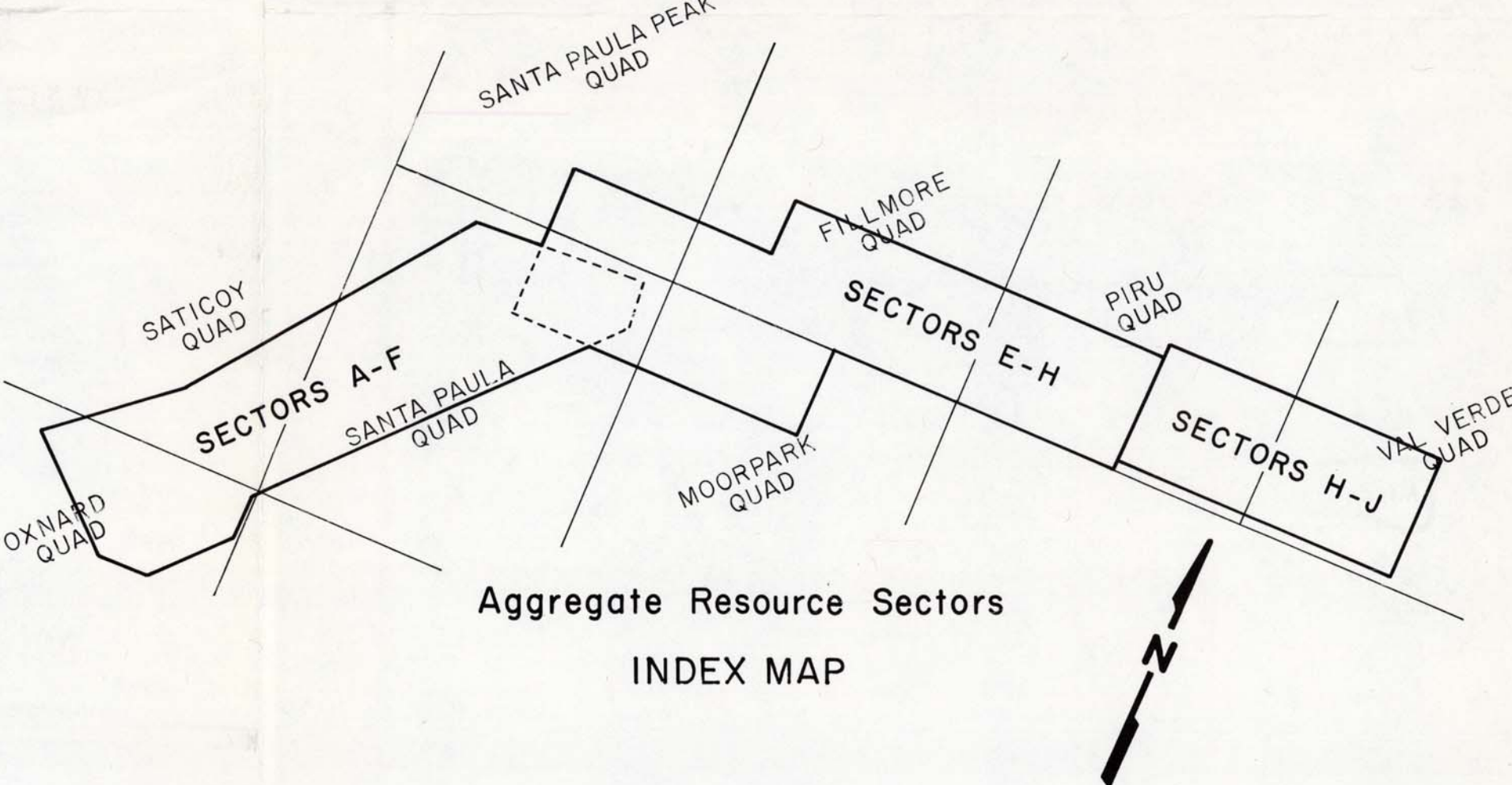
Mineral Land Classification
of Ventura County
SANTA CLARA RIVER
Aggregate Resource Sectors A-J

by
T. P. Anderson
R. C. Loyd
E. W. Kiessling
S. L. Kohler
R. V. Miller

1981



SCALE 1:24,000



- EXPLANATION
- Drill Hole
 - Area underlain by extractable sand and gravel (Resource Sector)
 - ▨ Riverbed
 - MRZ Line