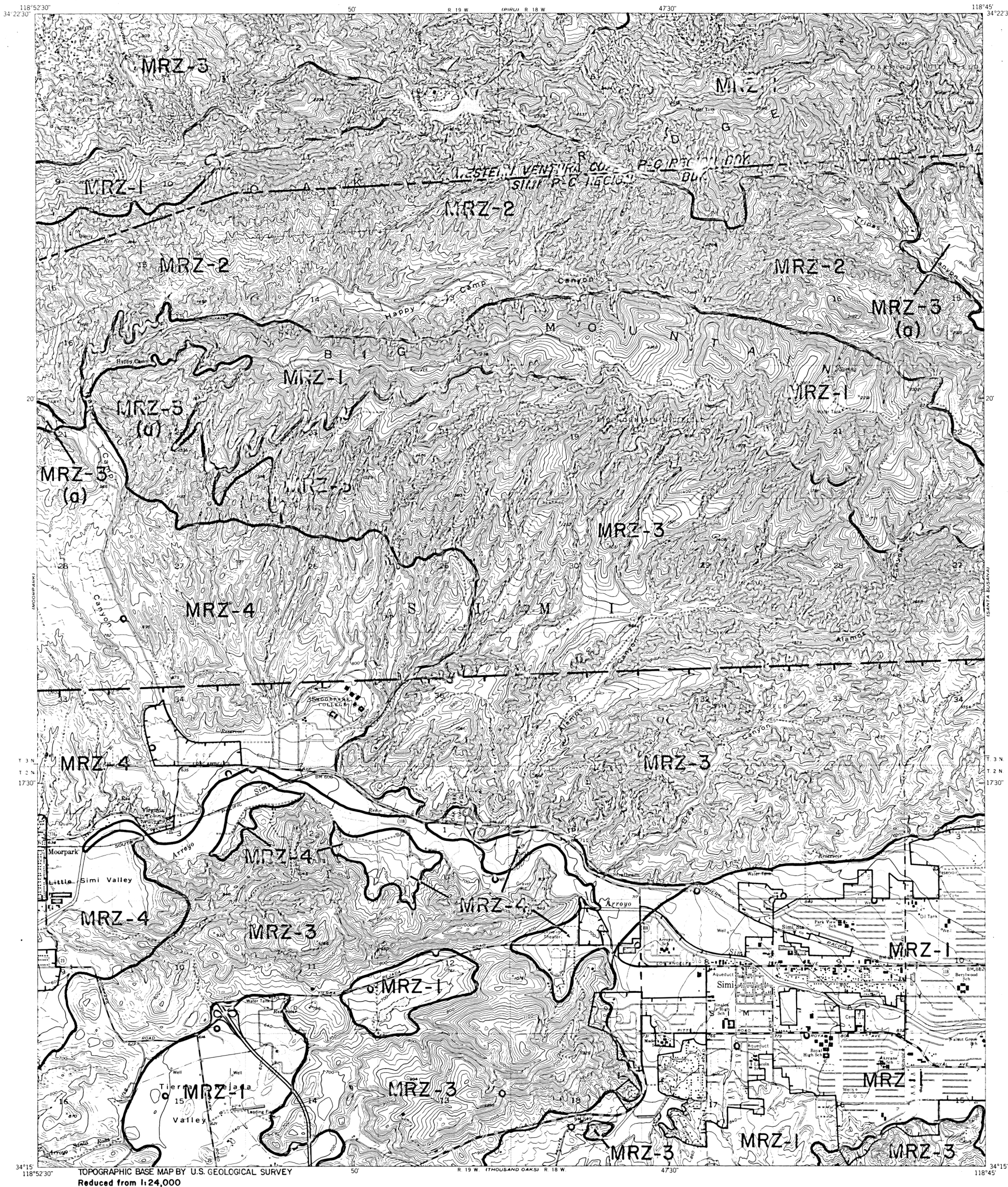




CALIFORNIA DIVISION OF MINES AND GEOLOGY  
JAMES F. DAVIS, STATE GEOLOGIST

STATE OF CALIFORNIA  
THE RESOURCES AGENCY  
DEPARTMENT OF CONSERVATION

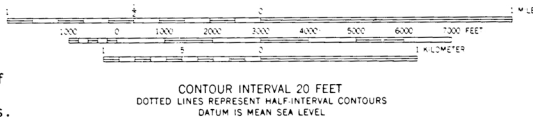
SIMI QUADRANGLE  
SPECIAL REPORT 145 PLATE 1.12



TOPOGRAPHIC BASE MAP BY U.S. GEOLOGICAL SURVEY  
Reduced from 1:24,000

#### EXPLANATION

- Drill hole
  - OUTER BOUNDARY OF AREAS SUBJECT TO URBANIZATION  
Boundaries established from data supplied by the Office of Planning and Research with modifications developed from information supplied by local government and other sources. Hachures lie within area undergoing urbanization.
  - EXISTING URBAN BOUNDARIES  
Boundaries established by the Office of Planning and Research and by data supplied by local government agencies and other sources to reflect present conditions. Hachures lie within urban area.
  - PRODUCTION-CONSUMPTION REGION BOUNDARY  
(see text for discussion)
  - MINERAL RESOURCE ZONE BOUNDARIES
    - MRZ-1 Areas where adequate information indicates that no significant mineral deposits are present, or where it is judged that little likelihood exists for their presence.
    - MRZ-2 Areas where adequate information indicates that significant mineral deposits are present or where it is judged that a high likelihood for their presence exists.
    - MRZ-3 Areas containing mineral deposits the significance of which cannot be evaluated from available data.
    - MRZ-4 Areas where available information is inadequate for assignment to any other MRZ zone.
- See text for additional explanation of MRZ Symbols.



CONTOUR INTERVAL 20 FEET  
DOTTED LINES REPRESENT HALF-INTERVAL CONTOURS  
DATUM IS MEAN SEA LEVEL



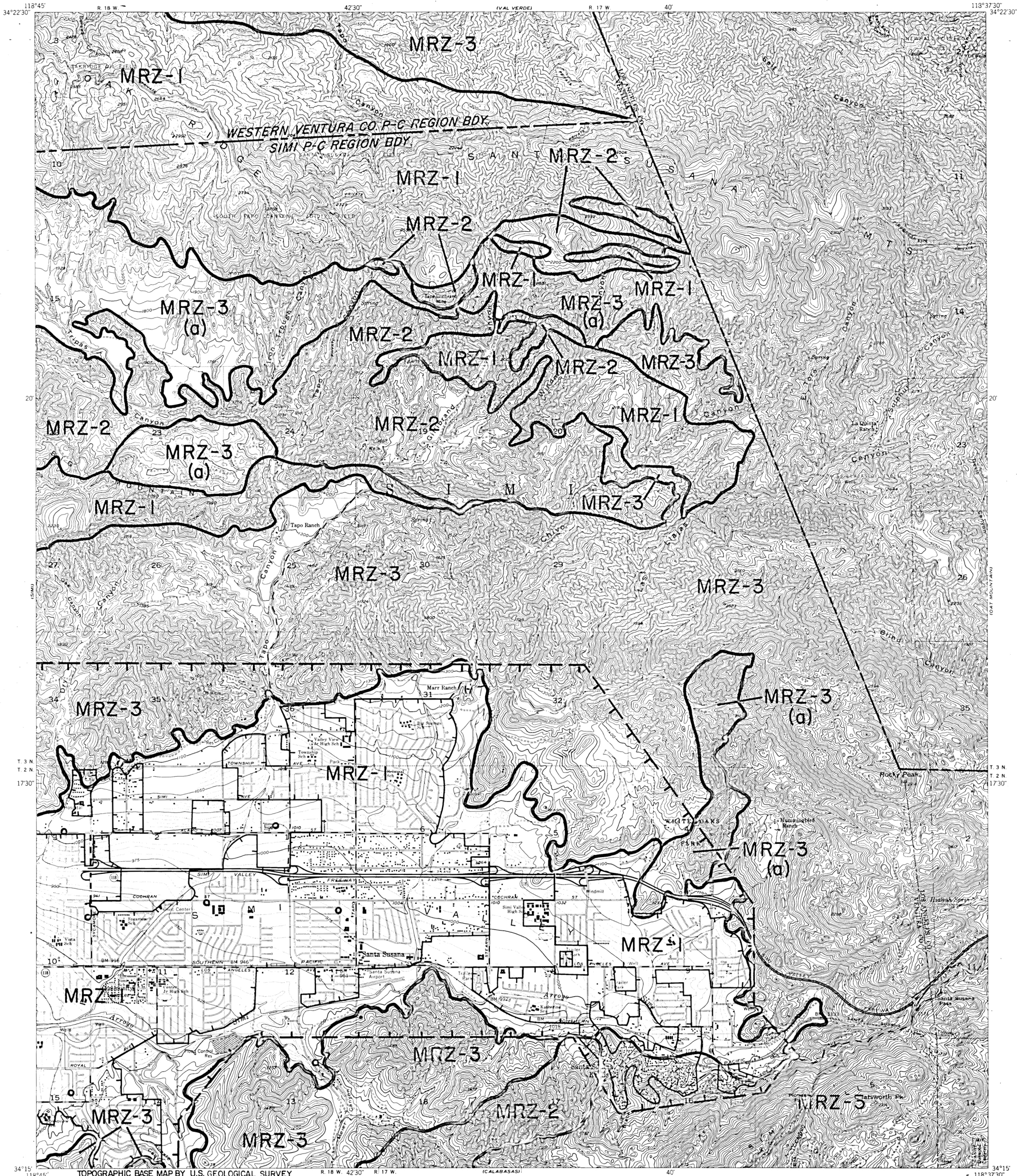
SIMI, CALIF.

## MINERAL LAND CLASSIFICATION MAP AGGREGATE RESOURCES ONLY

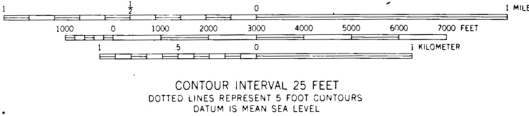
PREPARED IN COMPLIANCE WITH THE SURFACE MINING  
AND RECLAMATION ACT OF 1975, ARTICLE 4, SECTION 2761

*James F. Davis*  
STATE GEOLOGIST





EXPLANATION



SANTA SUSANA, CALIF.

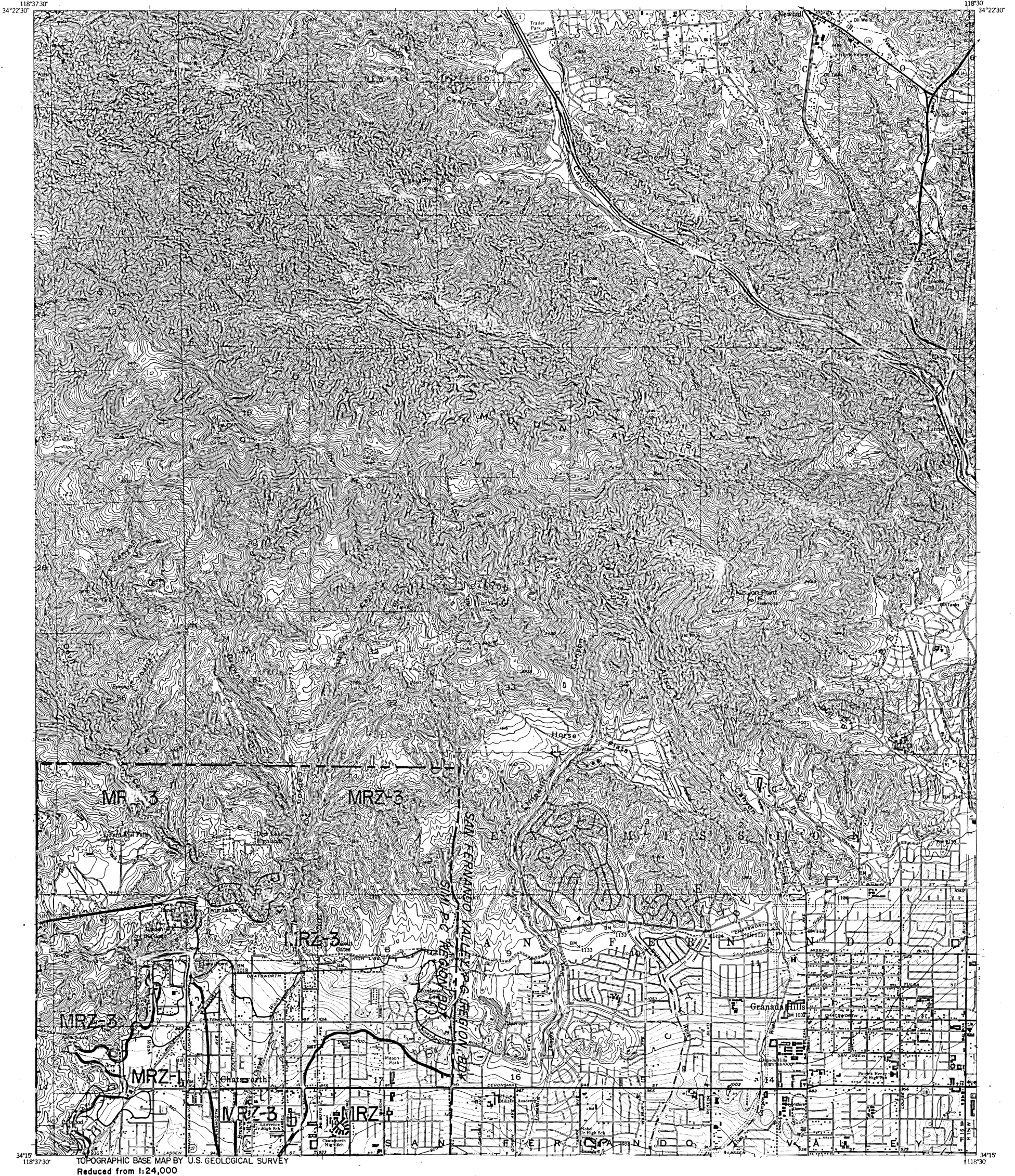
- Drill hole
- OUTER BOUNDARY OF AREAS SUBJECT TO URBANIZATION  
Boundaries established from data supplied by the Office of Planning and Research with modifications developed from information supplied by local government and other sources. Hachures lie within area undergoing urbanization.
- EXISTING URBAN BOUNDARIES  
Boundaries established by the Office of Planning and Research and by data supplied by local government agencies and other sources to reflect present conditions. Hachures lie within urban area.
- PRODUCTION-CONSUMPTION REGION BOUNDARY  
(see text for discussion)
- MINERAL RESOURCE ZONE BOUNDARIES
- MRZ-1 Areas where adequate information indicates that no significant mineral deposits are present, or where it is judged that little likelihood exists for their presence.
- MRZ-2 Areas where adequate information indicates that significant mineral deposits are present or where it is judged that a high likelihood for their presence exists.
- MRZ-3 Areas containing mineral deposits the significance of which cannot be evaluated from available data.
- MRZ-4 Areas where available information is inadequate for assignment to any other MRZ zone.
- See text for additional explanation of MRZ Symbols.

MINERAL LAND CLASSIFICATION MAP  
AGGREGATE RESOURCES ONLY

PREPARED IN COMPLIANCE WITH THE SURFACE MINING  
AND RECLAMATION ACT OF 1975, ARTICLE 4, SECTION 2761

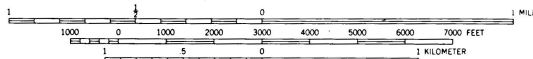
*James F. Davis*  
STATE GEOLOGIST





#### EXPLANATION

- Drill hole
  - OUTER BOUNDARY OF AREAS SUBJECT TO URBANIZATION  
Boundaries established from data supplied by the Office of Planning and Research with modifications developed from information supplied by local government and other sources. Hachures lie within area undergoing urbanization.
  - EXISTING URBAN BOUNDARIES  
Boundaries established by the Office of Planning and Research and by data supplied by local government agencies and other sources to reflect present conditions. Hachures lie within urban area.
  - PRODUCTION-CONSUMPTION REGION BOUNDARY  
(see text for discussion)
  - MINERAL RESOURCE ZONE BOUNDARIES
  - MRZ-1 Areas where adequate information indicates that no significant mineral deposits are present, or where it is judged that little likelihood exists for their presence.
  - MRZ-2 Areas where adequate information indicates that significant mineral deposits are present or where it is judged that a high likelihood for their presence exists.
  - MRZ-3 Areas containing mineral deposits the significance of which cannot be evaluated from available data.
  - MRZ-4 Areas where available information is inadequate for assignment to any other MRZ zone.
- See text for additional explanation of MRZ Symbols.



OAT MOUNTAIN, CALIF.

## MINERAL LAND CLASSIFICATION MAP AGGREGATE RESOURCES ONLY

PREPARED IN COMPLIANCE WITH THE SURFACE MINING  
AND RECLAMATION ACT OF 1975, ARTICLE 4, SECTION 2761

*James F. Davis*  
STATE GEOLOGIST





CALIFORNIA DIVISION OF MINES AND GEOLOGY  
JAMES F. DAVIS, STATE GEOLOGIST

STATE OF CALIFORNIA  
THE RESOURCES AGENCY  
DEPARTMENT OF CONSERVATION

OXNARD QUADRANGLE  
SPECIAL REPORT 145 PLATE 1.15

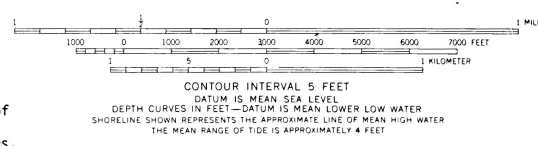


TOPOGRAPHIC BASE MAP BY U.S. GEOLOGICAL SURVEY  
Reduced from 1:24,000

EXPLANATION

- Drill hole
- OUTER BOUNDARY OF AREAS SUBJECT TO URBANIZATION  
Boundaries established from data supplied by the Office of Planning and Research with modifications developed from information supplied by local government and other sources. Hachures lie within area undergoing urbanization.
- EXISTING URBAN BOUNDARIES  
Boundaries established by the Office of Planning and Research and by data supplied by local government agencies and other sources to reflect present conditions. Hachures lie within urban area.
- PRODUCTION-CONSUMPTION REGION BOUNDARY  
(see text for discussion)
- MINERAL RESOURCE ZONE BOUNDARIES
- MRZ-1 Areas where adequate information indicates that no significant mineral deposits are present, or where it is judged that little likelihood exists for their presence.
- MRZ-2 Areas where adequate information indicates that significant mineral deposits are present or where it is judged that a high likelihood for their presence exists.
- MRZ-3 Areas containing mineral deposits the significance of which cannot be evaluated from available data.
- MRZ-4 Areas where available information is inadequate for assignment to any other MRZ zone.

See text for additional explanation of MRZ Symbols.



OXNARD, CALIF.

MINERAL LAND CLASSIFICATION MAP  
AGGREGATE RESOURCES ONLY

PREPARED IN COMPLIANCE WITH THE SURFACE MINING  
AND RECLAMATION ACT OF 1975, ARTICLE 4, SECTION 2761

*James F. Davis*  
STATE GEOLOGIST

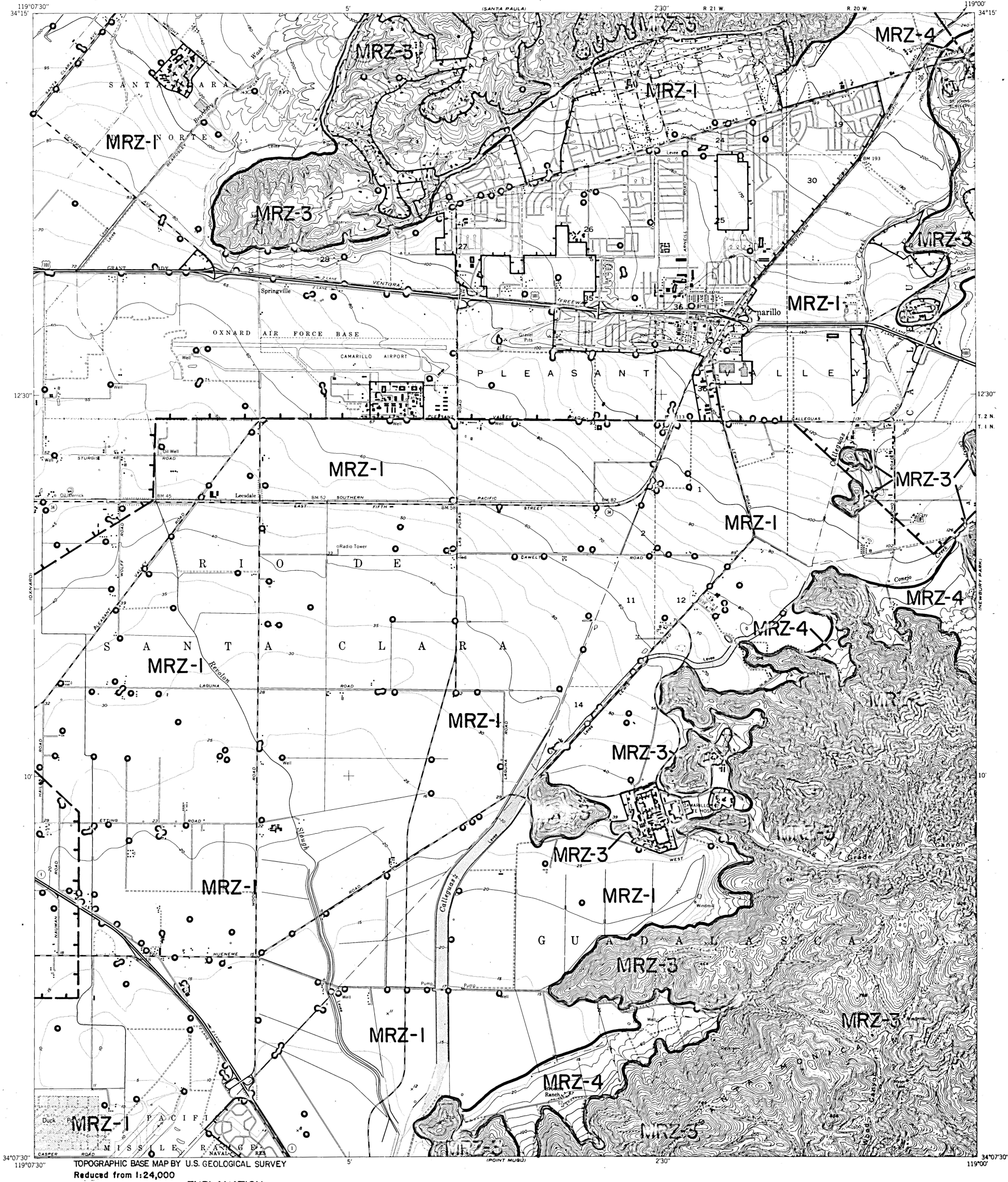




CALIFORNIA DIVISION OF MINES AND GEOLOGY  
JAMES F. DAVIS, STATE GEOLOGIST

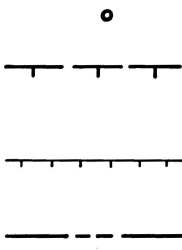
STATE OF CALIFORNIA  
THE RESOURCES AGENCY  
DEPARTMENT OF CONSERVATION

CAMARILLO QUADRANGLE  
SPECIAL REPORT 145 PLATE 1.16

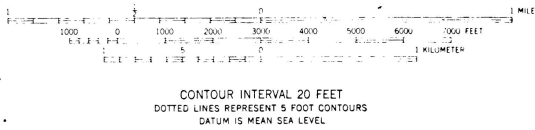


TOPOGRAPHIC BASE MAP BY U.S. GEOLOGICAL SURVEY  
Reduced from 1:24,000

EXPLANATION



- Drill hole
- OUTER BOUNDARY OF AREAS SUBJECT TO URBANIZATION  
Boundaries established from data supplied by the Office of Planning and Research with modifications developed from information supplied by local government and other sources. Hachures lie within area undergoing urbanization.
- EXISTING URBAN BOUNDARIES  
Boundaries established by the Office of Planning and Research and by data supplied by local government agencies and other sources to reflect present conditions. Hachures lie within urban area.
- PRODUCTION-CONSUMPTION REGION BOUNDARY  
(see text for discussion)
- MINERAL RESOURCE ZONE BOUNDARIES
- MRZ-1 Areas where adequate information indicates that no significant mineral deposits are present, or where it is judged that little likelihood exists for their presence.
- MRZ-2 Areas where adequate information indicates that significant mineral deposits are present or where it is judged that a high likelihood for their presence exists.
- MRZ-3 Areas containing mineral deposits the significance of which cannot be evaluated from available data.
- MRZ-4 Areas where available information is inadequate for assignment to any other MRZ zone.
- See text for additional explanation of MRZ Symbols.



CONTOUR INTERVAL 20 FEET  
DOTTED LINES REPRESENT 5 FOOT CONTOURS  
DATUM IS MEAN SEA LEVEL



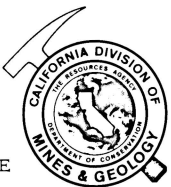
CAMARILLO, CALIF.

MINERAL LAND CLASSIFICATION MAP  
AGGREGATE RESOURCES ONLY

PREPARED IN COMPLIANCE WITH THE SURFACE MINING  
AND RECLAMATION ACT OF 1975, ARTICLE 4, SECTION 2761

*James F. Davis*  
STATE GEOLOGIST

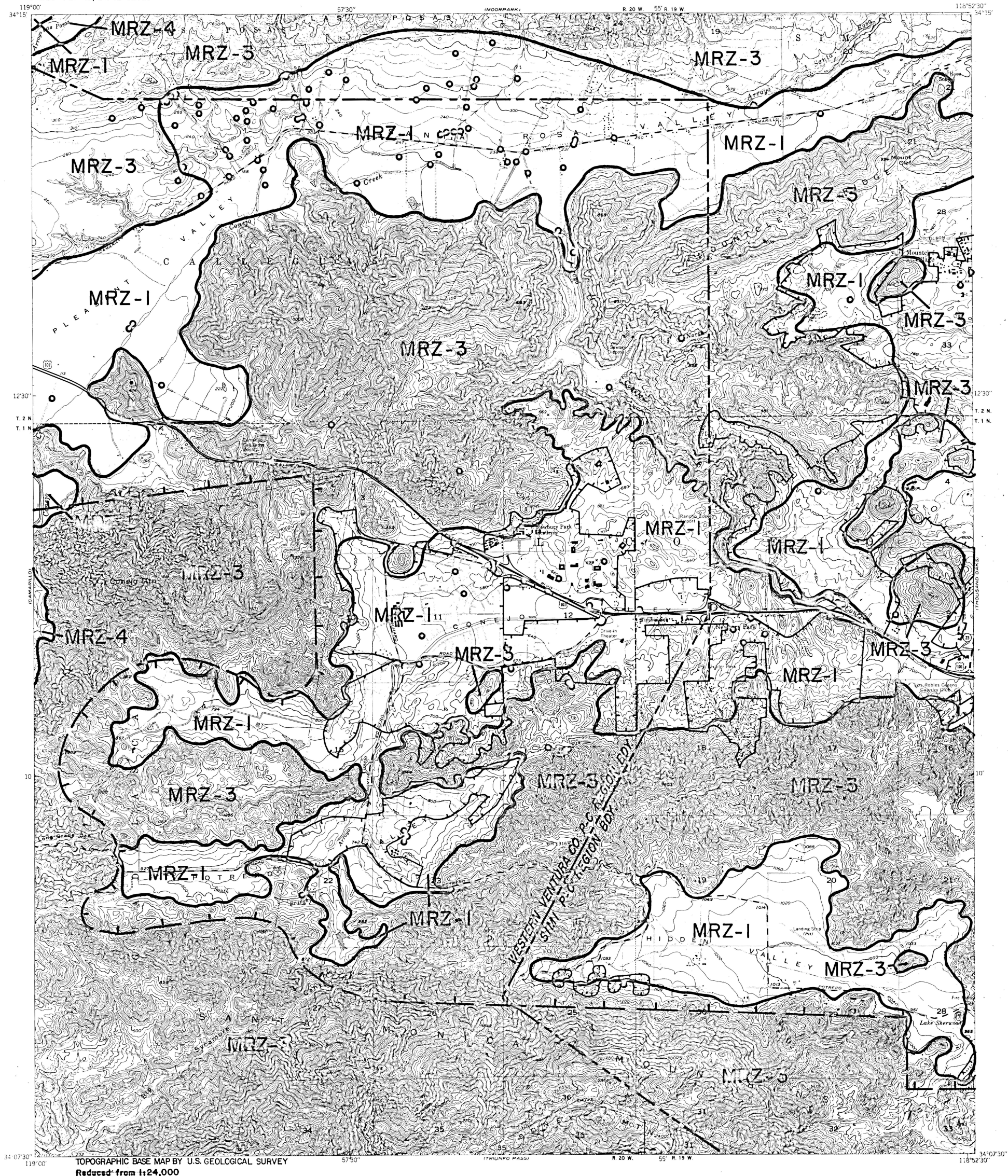




CALIFORNIA DIVISION OF MINES AND GEOLOGY  
JAMES F. DAVIS, STATE GEOLOGIST

STATE OF CALIFORNIA  
THE RESOURCES AGENCY  
DEPARTMENT OF CONSERVATION

NEWBURY PARK QUADRANGLE  
SPECIAL REPORT 145 PLATE 1.17

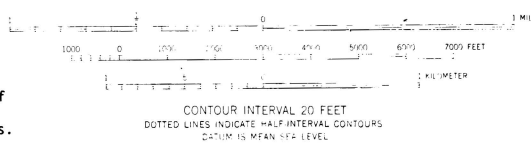


TOPOGRAPHIC BASE MAP BY U.S. GEOLOGICAL SURVEY  
Reduced from 1:24,000

#### EXPLANATION

- Drill hole
- OUTER BOUNDARY OF AREAS SUBJECT TO URBANIZATION  
Boundaries established from data supplied by the Office of Planning and Research with modifications developed from information supplied by local government and other sources. Hachures lie within area undergoing urbanization.
- EXISTING URBAN BOUNDARIES  
Boundaries established by the Office of Planning and Research and by data supplied by local government agencies and other sources to reflect present conditions. Hachures lie within urban area.
- PRODUCTION-CONSUMPTION REGION BOUNDARY  
(see text for discussion)
- MINERAL RESOURCE ZONE BOUNDARIES
- MRZ-1 Areas where adequate information indicates that no significant mineral deposits are present, or where it is judged that little likelihood exists for their presence.
- MRZ-2 Areas where adequate information indicates that significant mineral deposits are present or where it is judged that a high likelihood for their presence exists.
- MRZ-3 Areas containing mineral deposits the significance of which cannot be evaluated from available data.
- MRZ-4 Areas where available information is inadequate for assignment to any other MRZ zone.

See text for additional explanation of MRZ Symbols.



NEWBURY PARK, CALIF.

## MINERAL LAND CLASSIFICATION MAP AGGREGATE RESOURCES ONLY

PREPARED IN COMPLIANCE WITH THE SURFACE MINING  
AND RECLAMATION ACT OF 1975, ARTICLE 4, SECTION 2761

*James F. Davis*  
STATE GEOLOGIST