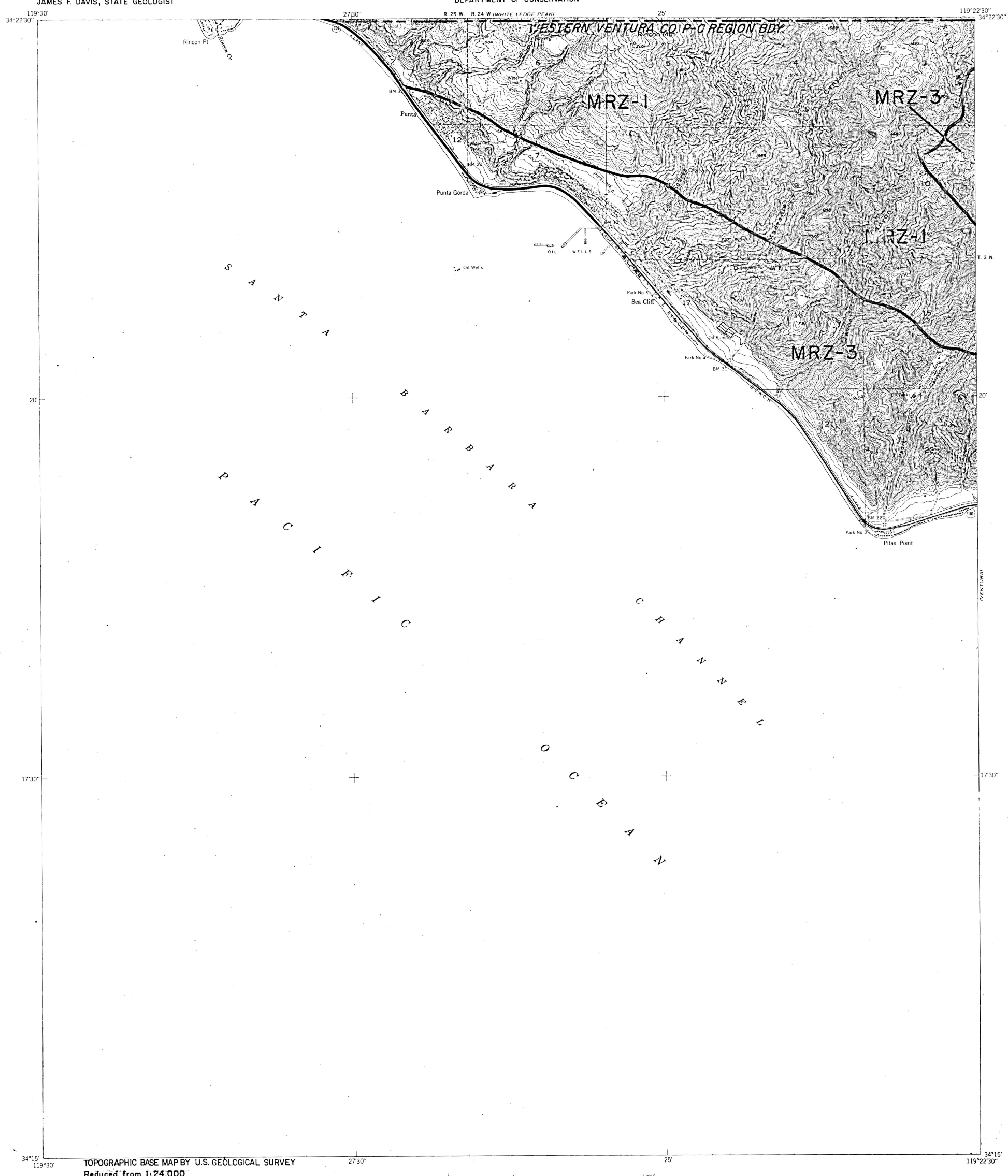




CALIFORNIA DIVISION OF MINES AND GEOLOGY
JAMES F. DAVIS, STATE GEOLOGIST

STATE OF CALIFORNIA
THE RESOURCES AGENCY
DEPARTMENT OF CONSERVATION

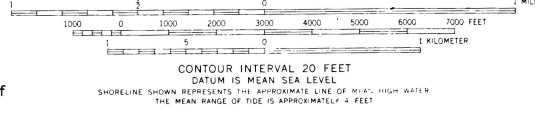
PITAS POINT QUADRANGLE
SPECIAL REPORT 145 PLATE 1.7



TOPOGRAPHIC BASE MAP BY U.S. GEOLOGICAL SURVEY
Reduced from 1:24,000

EXPLANATION

- Drill hole
 - OUTER BOUNDARY OF AREAS SUBJECT TO URBANIZATION
Boundaries established from data supplied by the Office of Planning and Research with modifications developed from information supplied by local government and other sources. Hachures lie within area undergoing urbanization.
 - EXISTING URBAN BOUNDARIES
Boundaries established by the Office of Planning and Research and by data supplied by local government agencies and other sources to reflect present conditions. Hachures lie within urban area.
 - PRODUCTION-CONSUMPTION REGION BOUNDARY
(see text for discussion)
 - MINERAL RESOURCE ZONE BOUNDARIES
 - MRZ-1 Areas where adequate information indicates that no significant mineral deposits are present, or where it is judged that little likelihood exists for their presence.
 - MRZ-2 Areas where adequate information indicates that significant mineral deposits are present or where it is judged that a high likelihood for their presence exists.
 - MRZ-3 Areas containing mineral deposits the significance of which cannot be evaluated from available data.
 - MRZ-4 Areas where available information is inadequate for assignment to any other MRZ zone.
- See text for additional explanation of MRZ Symbols.

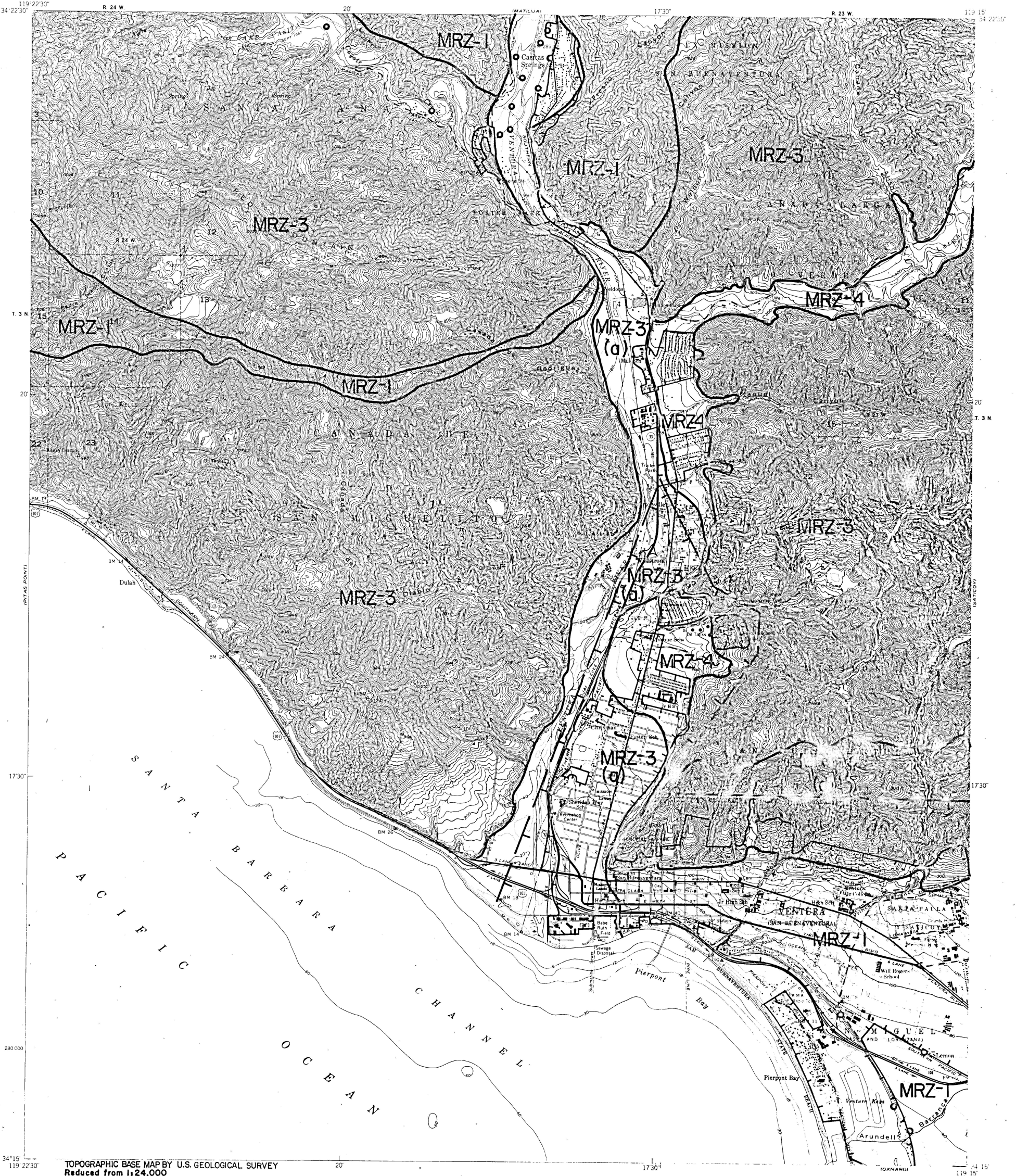


PITAS POINT, CALIF.

MINERAL LAND CLASSIFICATION MAP
AGGREGATE RESOURCES ONLY

PREPARED IN COMPLIANCE WITH THE SURFACE MINING
AND RECLAMATION ACT OF 1975, ARTICLE 4, SECTION 2761

James F. Davis
STATE GEOLOGIST



TOPOGRAPHIC BASE MAP BY U.S. GEOLOGICAL SURVEY
Reduced from 1:24,000

EXPLANATION

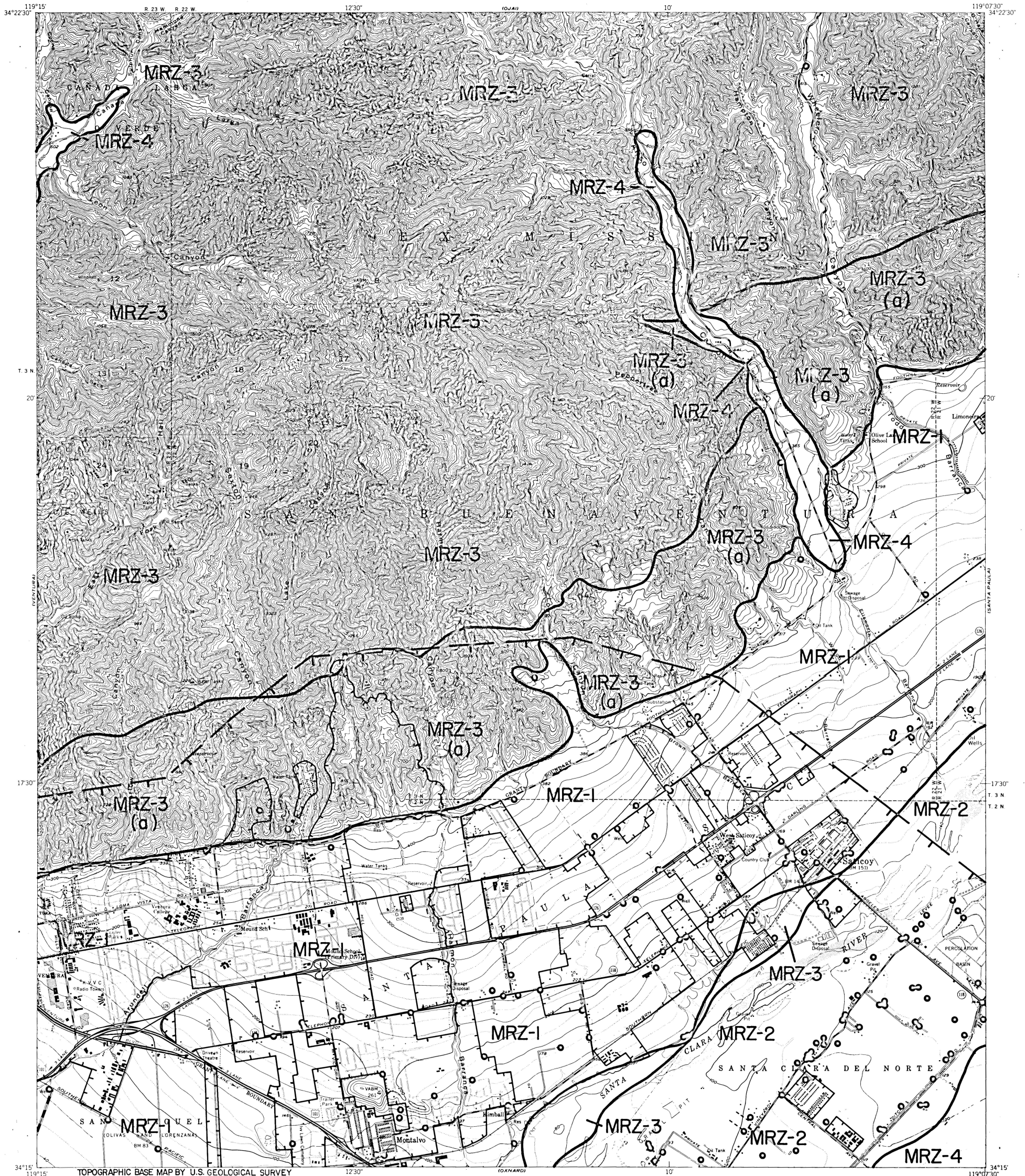
- Drill hole
- OUTER BOUNDARY OF AREAS SUBJECT TO URBANIZATION
Boundaries established from data supplied by the Office of Planning and Research with modifications developed from information supplied by local government and other sources. Hachures lie within area undergoing urbanization.
- EXISTING URBAN BOUNDARIES
Boundaries established by the Office of Planning and Research and by data supplied by local government agencies and other sources to reflect present conditions. Hachures lie within urban area.
- PRODUCTION-CONSUMPTION REGION BOUNDARY
(see text for discussion)
- MINERAL RESOURCE ZONE BOUNDARIES
- MRZ-1 Areas where adequate information indicates that no significant mineral deposits are present, or where it is judged that little likelihood exists for their presence.
- MRZ-2 Areas where adequate information indicates that significant mineral deposits are present or where it is judged that a high likelihood for their presence exists.
- MRZ-3 Areas containing mineral deposits the significance of which cannot be evaluated from available data.
- MRZ-4 Areas where available information is inadequate for assignment to any other MRZ zone.

See text for additional explanation of MRZ Symbols.

MINERAL LAND CLASSIFICATION MAP AGGREGATE RESOURCES ONLY

PREPARED IN COMPLIANCE WITH THE SURFACE MINING
AND RECLAMATION ACT OF 1975, ARTICLE 4, SECTION 2761

James F. Davis



TOPOGRAPHIC BASE MAP BY U.S. GEOLOGICAL SURVEY
Reduced from 1:24,000

EXPLANATION

Drill hole

OUTER BOUNDARY OF AREAS SUBJECT TO URBANIZATION
Boundaries established from data supplied by the Office of Planning and Research with modifications developed from information supplied by local government and other sources. Hachures lie within area undergoing urbanization.

EXISTING URBAN BOUNDARIES
Boundaries established by the Office of Planning and Research and by data supplied by local government agencies and other sources to reflect present conditions. Hachures lie within urban area.

PRODUCTION-CONSUMPTION REGION BOUNDARY
(see text for discussion)

MINERAL RESOURCE ZONE BOUNDARIES

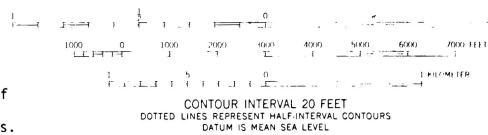
MRZ-1 Areas where adequate information indicates that no significant mineral deposits are present, or where it is judged that little likelihood exists for their presence.

MRZ-2 Areas where adequate information indicates that significant mineral deposits are present or where it is judged that a high likelihood for their presence exists.

MRZ-3 Areas containing mineral deposits the significance of which cannot be evaluated from available data.

MRZ-4 Areas where available information is inadequate for assignment to any other MRZ zone.

See text for additional explanation of MRZ Symbols.

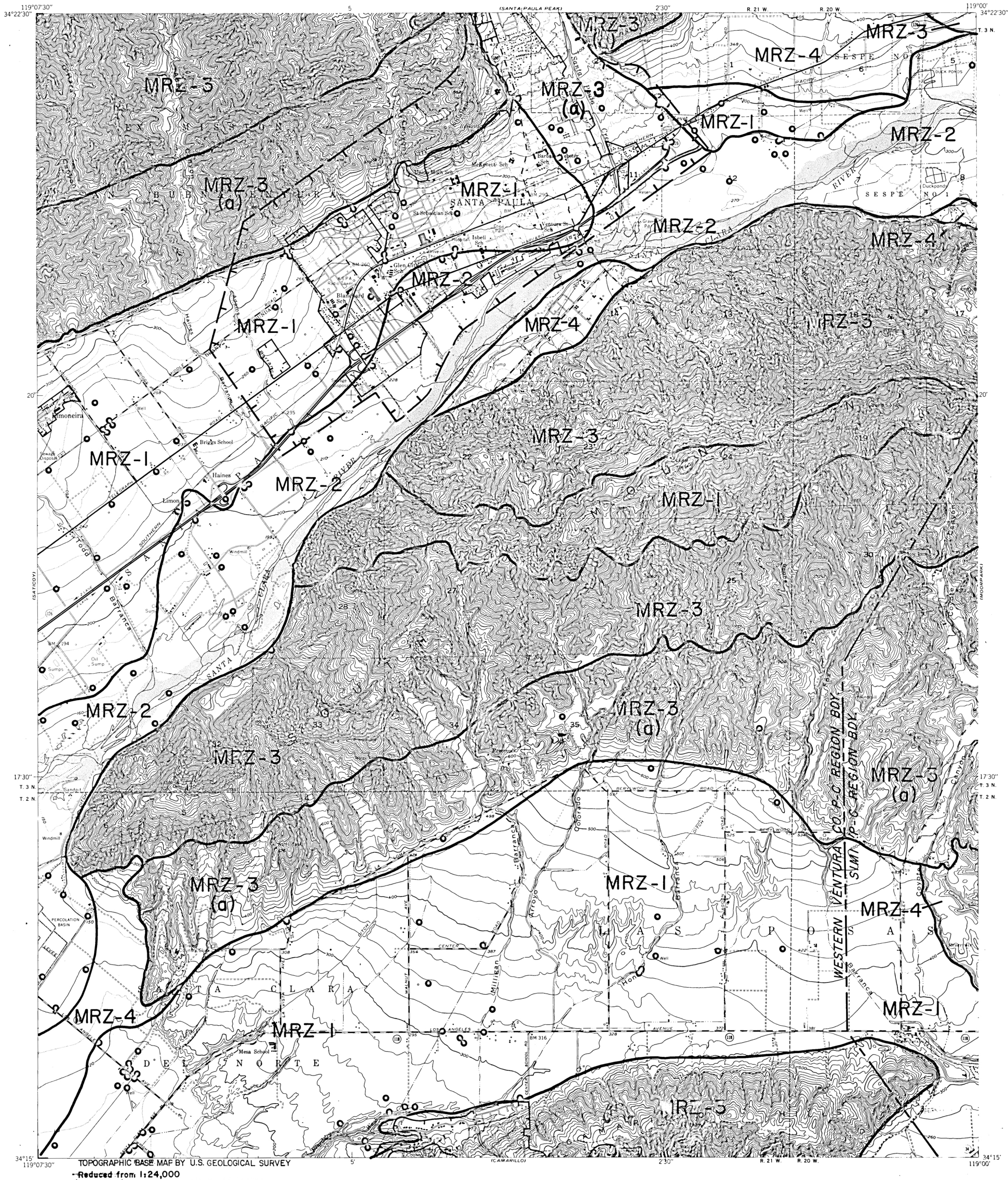


SATICOY, CALIF.

MINERAL LAND CLASSIFICATION MAP AGGREGATE RESOURCES ONLY

PREPARED IN COMPLIANCE WITH THE SURFACE MINING
AND RECLAMATION ACT OF 1975, ARTICLE 4, SECTION 2761

James F. Davis

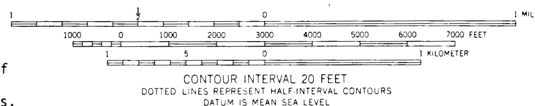


TOPOGRAPHIC BASE MAP BY U.S. GEOLOGICAL SURVEY
Reduced from 1:24,000

EXPLANATION

- Drill hole
- OUTER BOUNDARY OF AREAS SUBJECT TO URBANIZATION
Boundaries established from data supplied by the Office of Planning and Research with modifications developed from information supplied by local government and other sources. Hachures lie within area undergoing urbanization.
- EXISTING URBAN BOUNDARIES
Boundaries established by the Office of Planning and Research and by data supplied by local government agencies and other sources to reflect present conditions. Hachures lie within urban area.
- PRODUCTION-CONSUMPTION REGION BOUNDARY
(see text for discussion)
- MINERAL RESOURCE ZONE BOUNDARIES
 - MRZ-1 Areas where adequate information indicates that no significant mineral deposits are present, or where it is judged that little likelihood exists for their presence.
 - MRZ-2 Areas where adequate information indicates that significant mineral deposits are present or where it is judged that a high likelihood for their presence exists.
 - MRZ-3 Areas containing mineral deposits the significance of which cannot be evaluated from available data.
 - MRZ-4 Areas where available information is inadequate for assignment to any other MRZ zone.

See text for additional explanation of MRZ Symbols.



SANTA PAULA, CALIF.

MINERAL LAND CLASSIFICATION MAP AGGREGATE RESOURCES ONLY

PREPARED IN COMPLIANCE WITH THE SURFACE MINING
AND RECLAMATION ACT OF 1975, ARTICLE 4, SECTION 2761

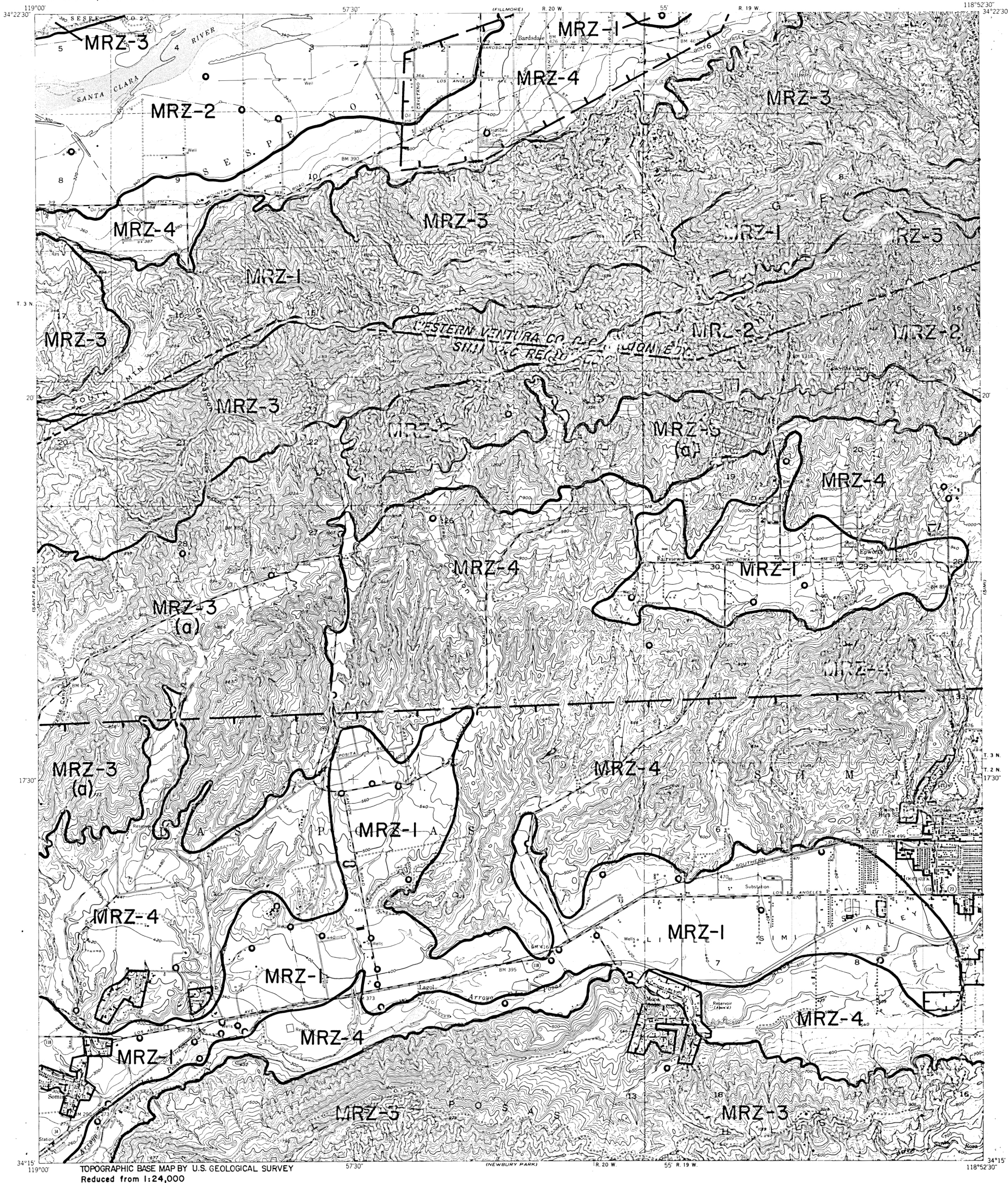
James F. Davis
STATE GEOLOGIST




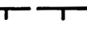
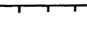



CALIFORNIA DIVISION OF MINES AND GEOLOGY
JAMES F. DAVIS, STATE GEOLOGIST

STATE OF CALIFORNIA
THE RESOURCES AGENCY
DEPARTMENT OF CONSERVATION

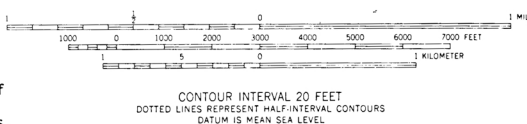
MOORPARK QUADRANGLE
SPECIAL REPORT 145 PLATE I.II



EXPLANATION

-  Drill hole
-  OUTER BOUNDARY OF AREAS SUBJECT TO URBANIZATION
Boundaries established from data supplied by the Office of Planning and Research with modifications developed from information supplied by local government and other sources. Hachures lie within area undergoing urbanization.
-  EXISTING URBAN BOUNDARIES
Boundaries established by the Office of Planning and Research and by data supplied by local government agencies and other sources to reflect present conditions. Hachures lie within urban area.
-  PRODUCTION-CONSUMPTION REGION BOUNDARY
(see text for discussion)
-  MINERAL RESOURCE ZONE BOUNDARIES
-  MRZ-2
- MRZ-1 Areas where adequate information indicates that no significant mineral deposits are present, or where it is judged that little likelihood exists for their presence.
- MRZ-2 Areas where adequate information indicates that significant mineral deposits are present or where it is judged that a high likelihood for their presence exists.
- MRZ-3 Areas containing mineral deposits the significance of which cannot be evaluated from available data.
- MRZ-4 Areas where available information is inadequate for assignment to any other MRZ zone.

See text for additional explanation of MRZ Symbols.



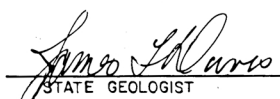
CONTOUR INTERVAL 20 FEET
DOTTED LINES REPRESENT HALF-INTERVAL CONTOURS
DATUM IS MEAN SEA LEVEL



MOORPARK, CALIF.

MINERAL LAND CLASSIFICATION MAP AGGREGATE RESOURCES ONLY

PREPARED IN COMPLIANCE WITH THE SURFACE MINING
AND RECLAMATION ACT OF 1975, ARTICLE 4, SECTION 276I


STATE GEOLOGIST