

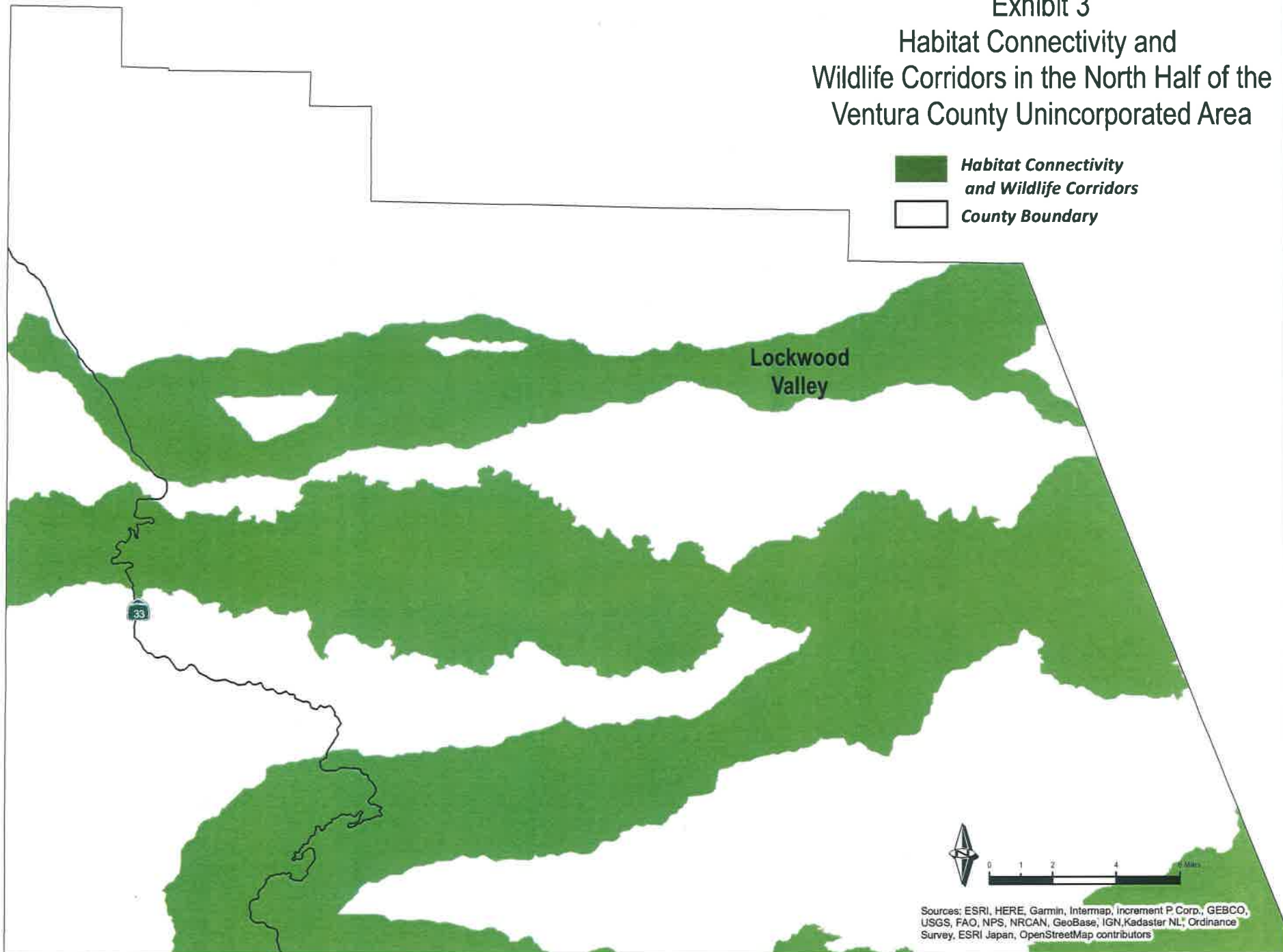
Planning Commission Hearing
 PL16-0127
 Exhibit 2 – Geographic Map of the
 Habitat Connectivity and Wildlife
 Corridors in the South Coast Ecoregion





Exhibit 3
Habitat Connectivity and
Wildlife Corridors in the North Half of the
Ventura County Unincorporated Area

 *Habitat Connectivity
and Wildlife Corridors*
 *County Boundary*



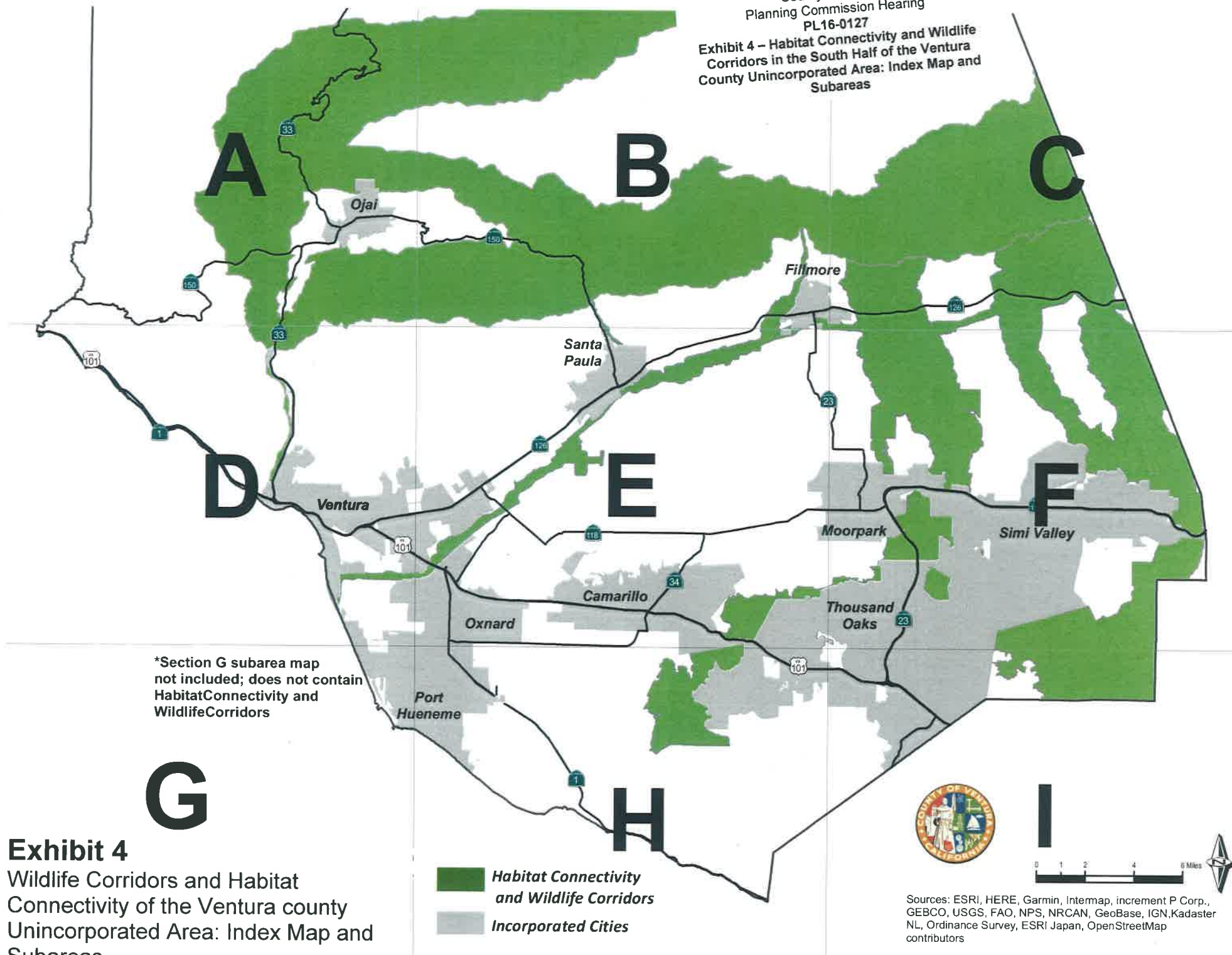
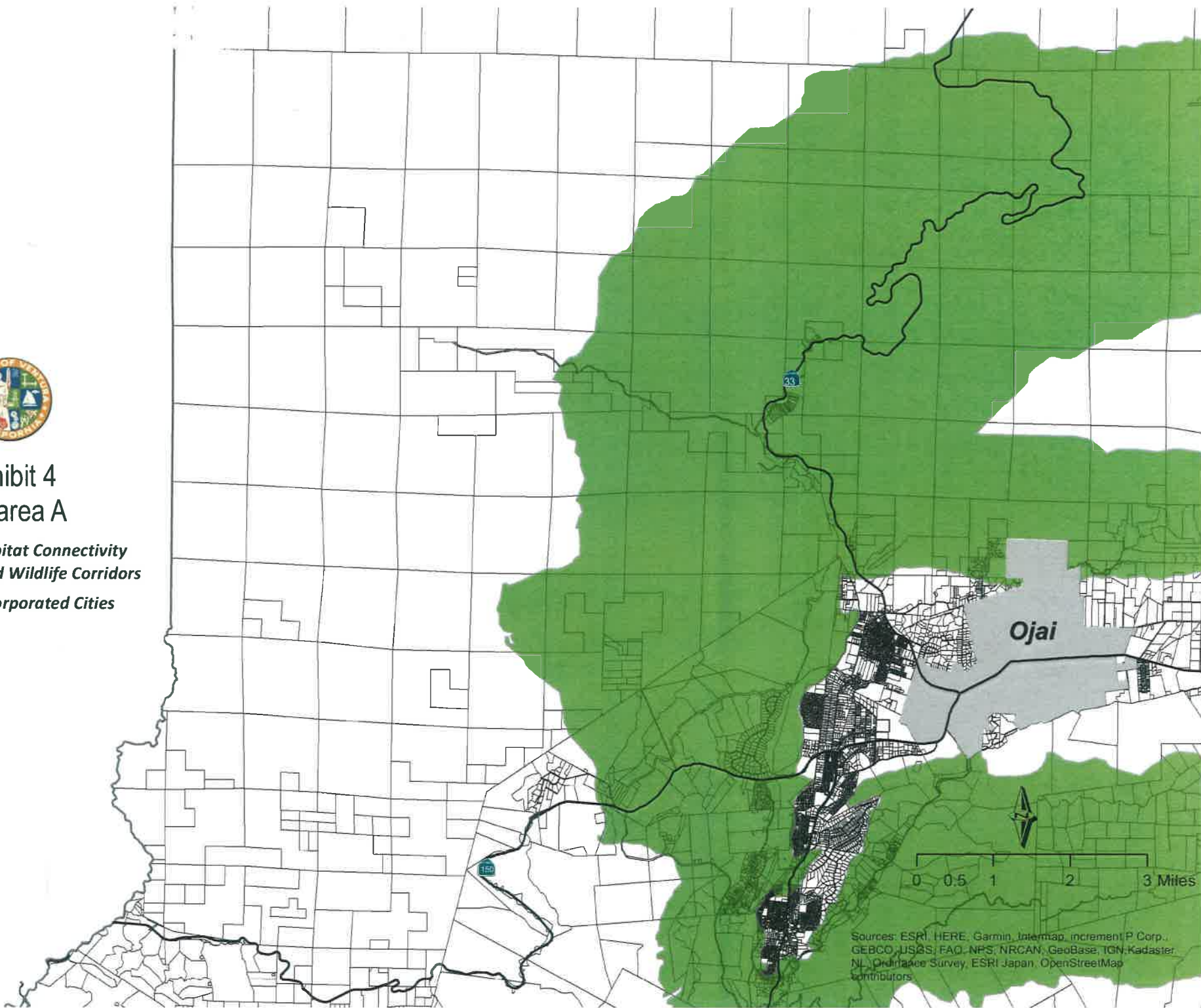




Exhibit 4 Subarea A

-  *Habitat Connectivity and Wildlife Corridors*
-  *Incorporated Cities*



Sources: ESRI, HERE, Garmin, Intermap, increment P Corp.,
GEBCO, USGS, FAO, NPS, NRCAN, GeoBase, IGN, Kadaster,
NL, Ordance Survey, ESRI Japan, OpenStreetMap
Contributors



Exhibit 4 Subarea A Detail

-  *Habitat Connectivity and Wildlife Corridors*
-  *Incorporated Cities*

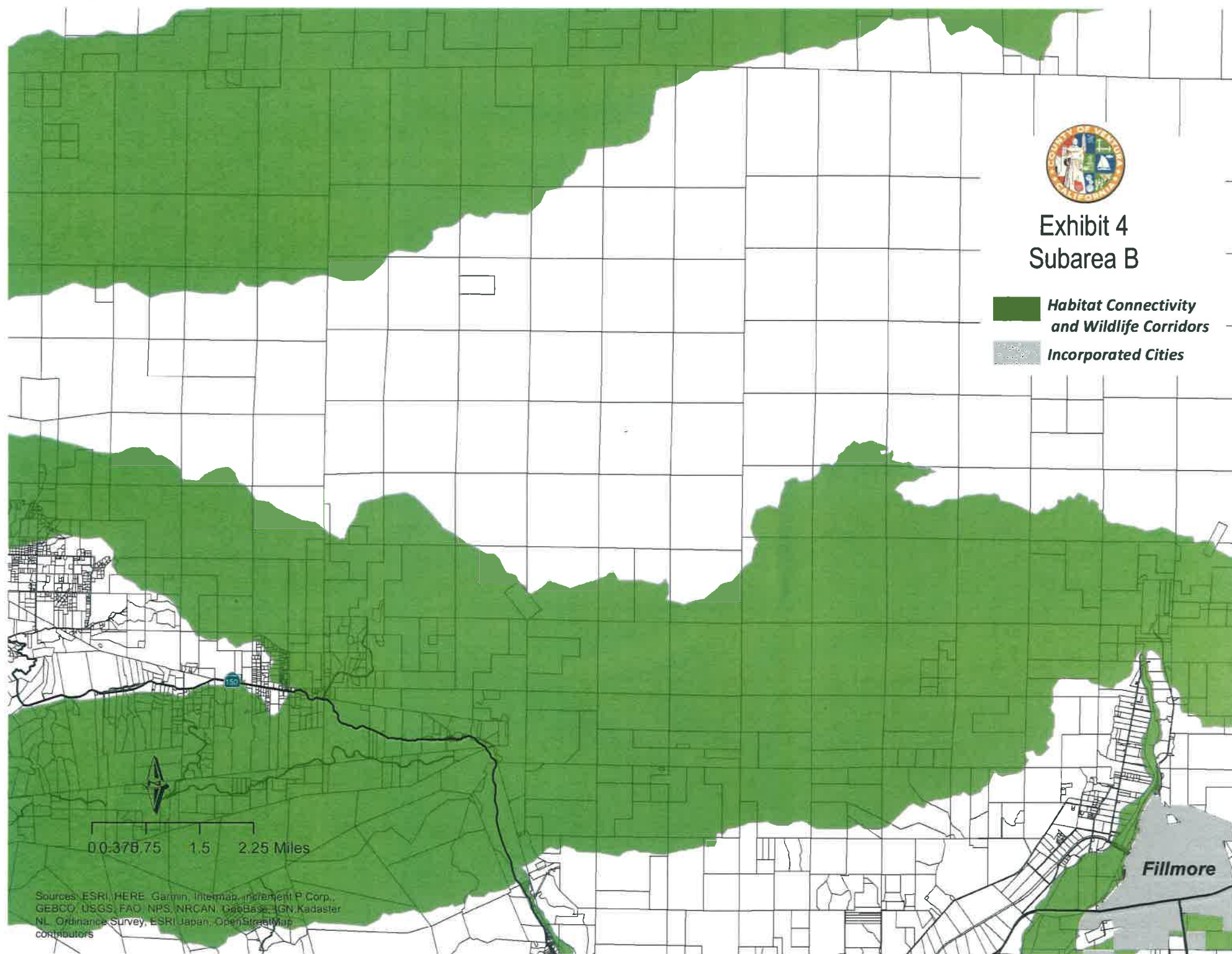
0 0.2 0.4 0.8 1.2 Miles

Sources: ESRI, HERE, Garmin, Intermap, increment P Corp.,
GEBCO, USGS, FAO, NPS, NRCAN, GeoBase, IGN, Kadaster
NL, Ordinance Survey, ESRI Japan, OpenStreetMap
contributors



Exhibit 4 Subarea B

-  **Habitat Connectivity and Wildlife Corridors**
-  **Incorporated Cities**



Sources: ESRI, HERE, Garmin, Intermap, increment P Corp.,
GEBCO, USGS, FAO, NPS, NRCAN, GeoBase, IGN, Kadaster
NL, Ordinance Survey, ESRI Japan, OpenStreetMap
contributors

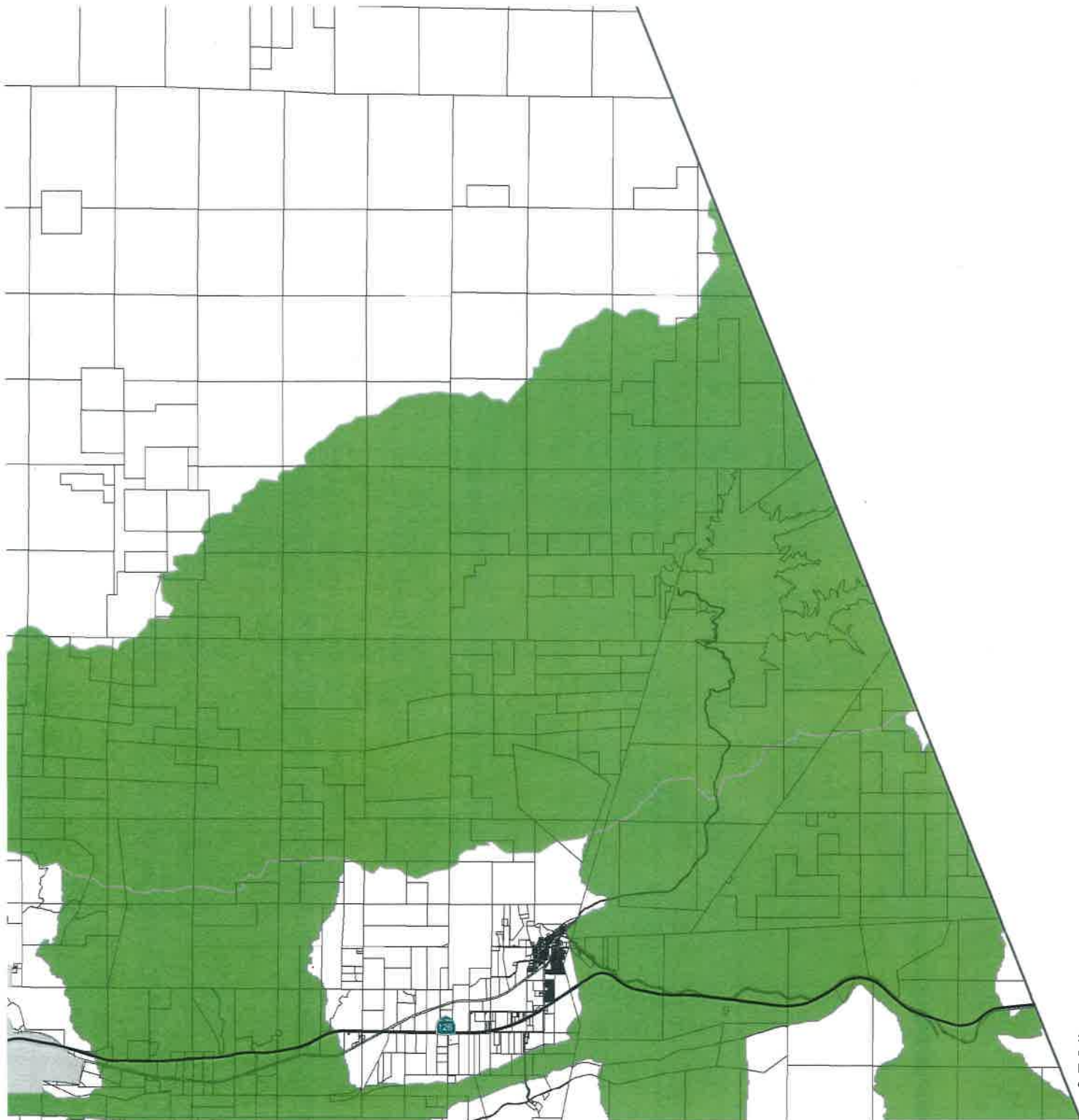


Exhibit 4 Subarea C

-  **Habitat Connectivity and Wildlife Corridors**
-  **Incorporated Cities**



0.0 0.375 0.75 1.5 2.25 Miles

Sources: ESRI, HERE, Garmin, Intermap, increment P Corp., GEBCO, USGS, FAO, NPS, NRCAN, GeoBase, IGN, Kadaster NL, Ordnance Survey, ESRI Japan, OpenStreetMap contributors



Exhibit 4 Subarea D

-  **Habitat Connectivity and Wildlife Corridors**
-  **Incorporated Cities**



0 0.375 0.75 1.5 2.25 Miles

Sources: ESRI, HERE, Garmin, Intermap, increment P Corp.,
GEBCO, USGS, FAO, NPS, NRCAN, GeoBase, IGN, Kadaster
NL, Ordinance Survey, ESRI Japan, OpenStreetMap
contributors

Ventura





Exhibit 4 Subarea D Detail

-  **Habitat Connectivity and Wildlife Corridors**
-  **Incorporated Cities**



0 0.150.3 0.6 0.9 Miles

Sources: ESRI, HERE, Garmin, Intermap, increment P Corp.,
GEBCO, USGS, FAO, NPS, NRCAN, GeoBase, IGN, Kadaster
NL, Ordinance Survey, ESRI Japan, OpenStreetMap
contributors

Ventura

Oxnard

101



Exhibit 4 Subarea E

-  **Habitat Connectivity and Wildlife Corridors**
-  **Incorporated Cities**

Santa Paula

Camarillo

Oxnard

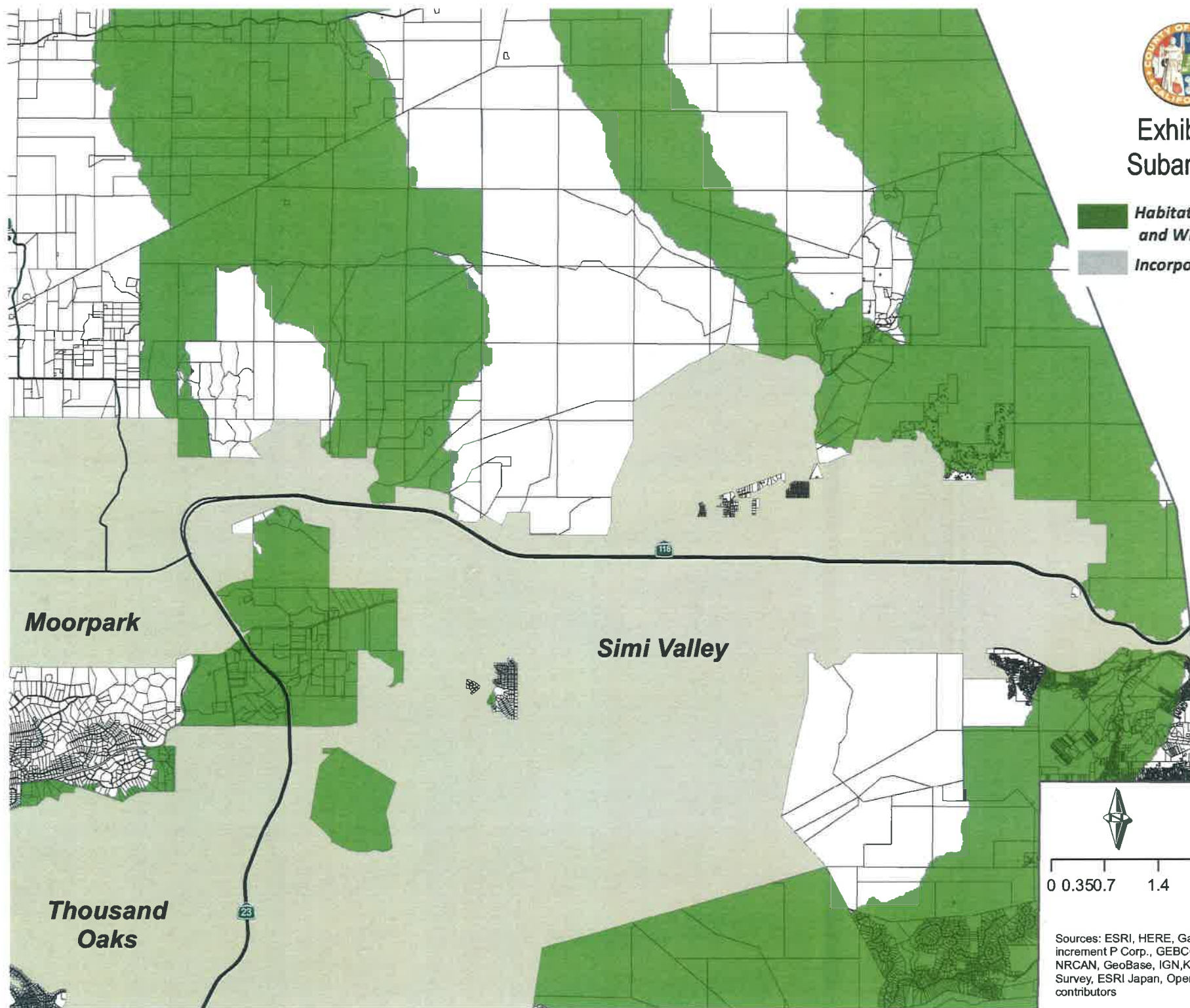
0 0.375 0.75 1.5 2.25 Miles

Sources: ESRI, HERE, Garmin, Intermap, increment P Corp.,
GEBCO, USGS, FAO, NPS, NRCAN, GeoBase, IGN, Kadaster
NL, Ordinance Survey, ESRI Japan, OpenStreetMap
contributors



Exhibit 4 Subarea F

-  **Habitat Connectivity and Wildlife Corridors**
-  **Incorporated Cities**



Sources: ESRI, HERE, Garmin, Intermap, increment P Corp., GEBCO, USGS, FAO, NPS, NRCAN, GeoBase, IGN, Kadaster NL, Ordnance Survey, ESRI Japan, OpenStreetMap contributors

**Port
Hueneme**



**Exhibit 4
Subarea H**

-  **Habitat Connectivity
and Wildlife Corridors**
-  **Incorporated Cities**

0 0.375 0.75 1.5 2.25 Miles

Sources: ESRI, HERE, Garmin, Intermap, increment P Corp.,
GEBCO, USGS, FAO, NPS, NRCAN, GeoBase, IGN, Kadaster
NL, Ordinance Survey, ESRI Japan, OpenStreetMap
contributors



Exhibit 4 Subarea I

-  **Habitat Connectivity and Wildlife Corridors**
-  **Incorporated Cities**



0 0.375 0.75 1.5 2.25 Miles

Sources: ESRI, HERE, Garmin, Intermap, increment P Corp.,
GEBCO, USGS, FAO, NPS, NRCAN, GeoBase, IGN, Kadaster
NL, Ordinance Survey, ESRI Japan, OpenStreetMap
contributors