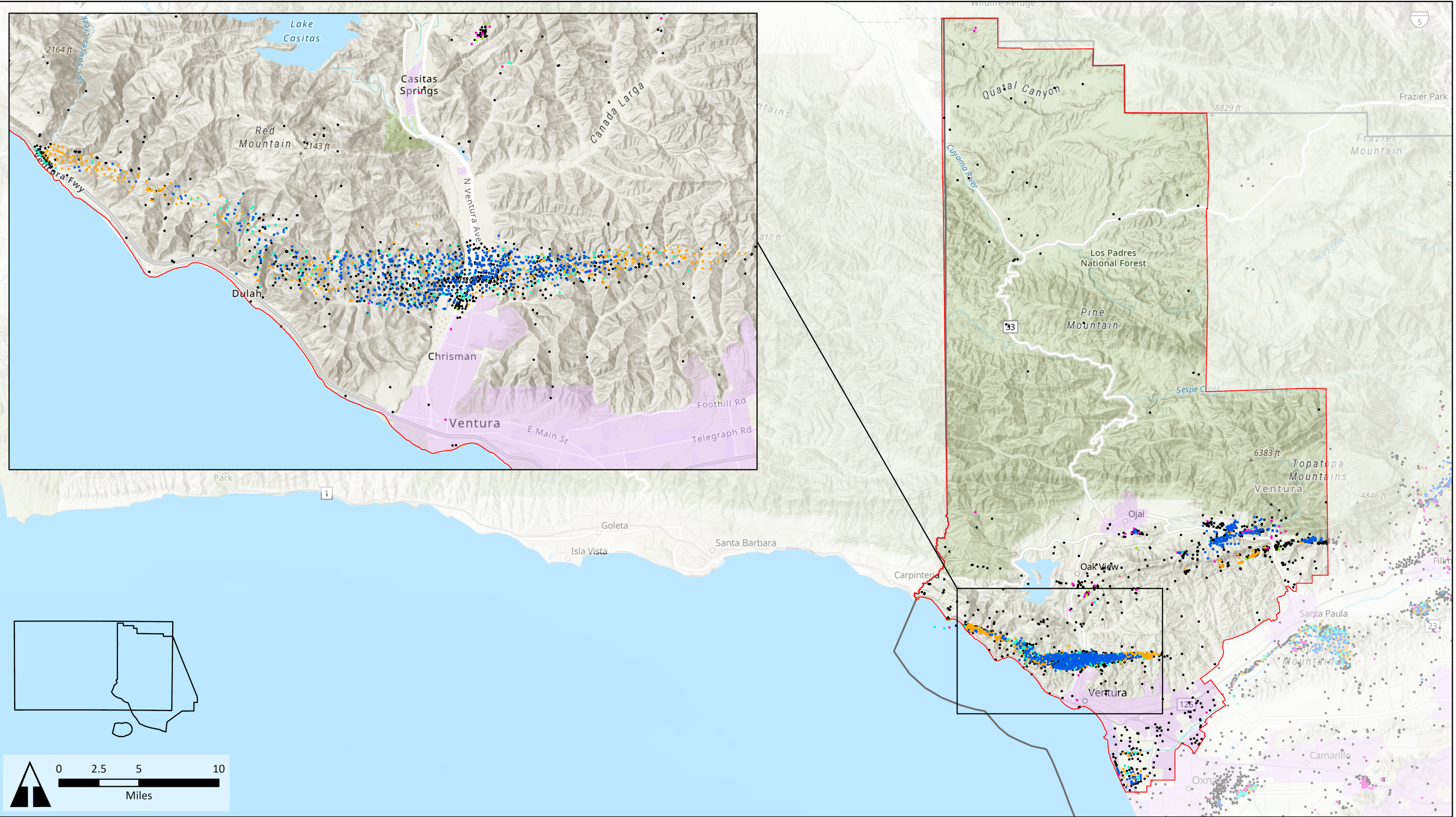


Exhibit 7
Oil & Gas Well Maps for
Supervisory Districts 1-5

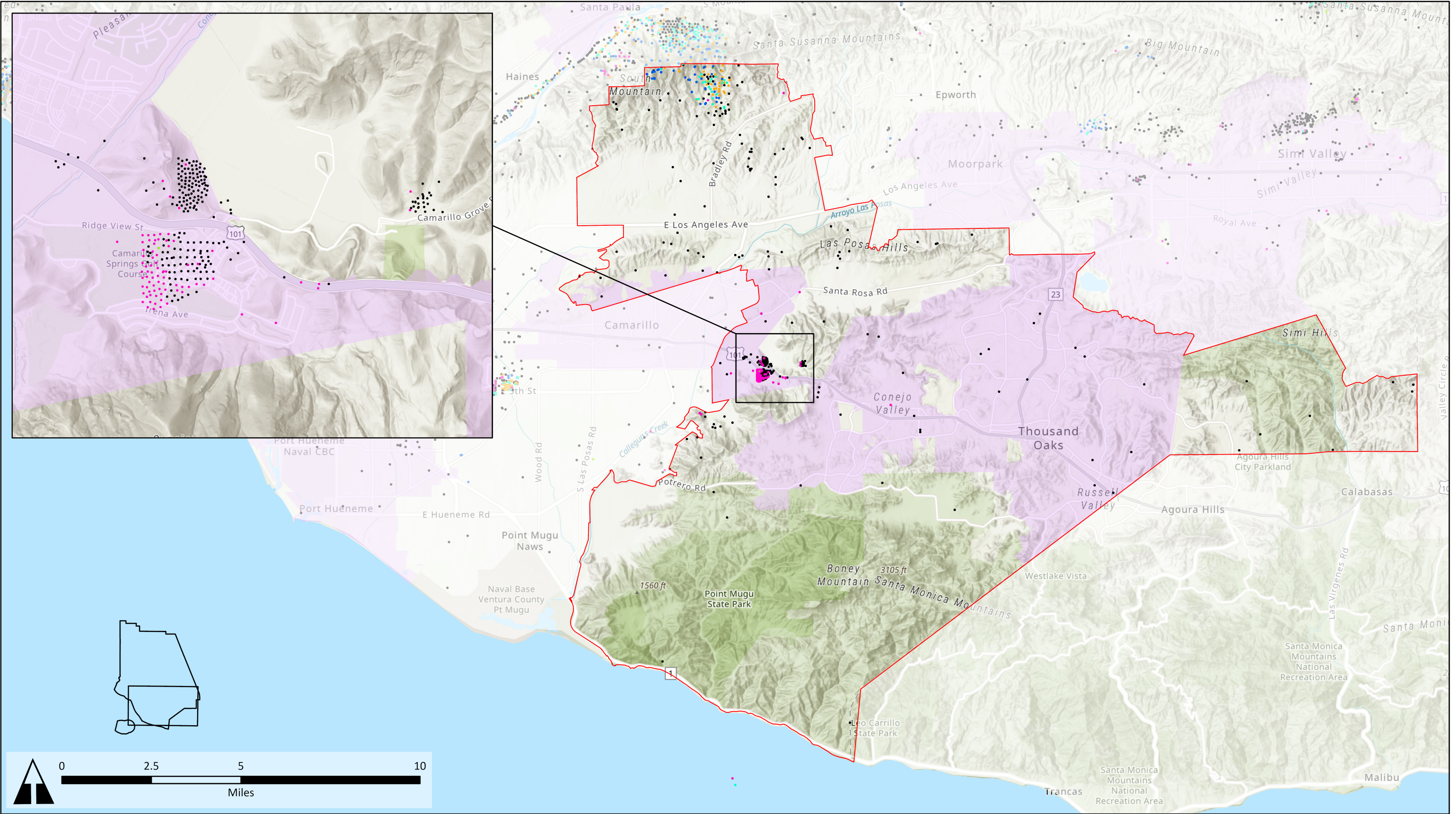


- Legend**
- Active Well (1,045 Wells)
 - Deserted Well (21 Wells)
 - Idle Well (346 Wells)
 - Long Term Idle Well (695 Wells)
 - Likely Orphan Well (83 Wells)
 - Plugged Well (1,666 Wells)
 - ▭ Supervisor District 1
 - ▭ Incorporated Areas

Oil & Gas Well Map Supervisor District 1

OIL AND GAS WELLS IN VENTURA COUNTY
SUPERVISORIAL DISTRICT 1



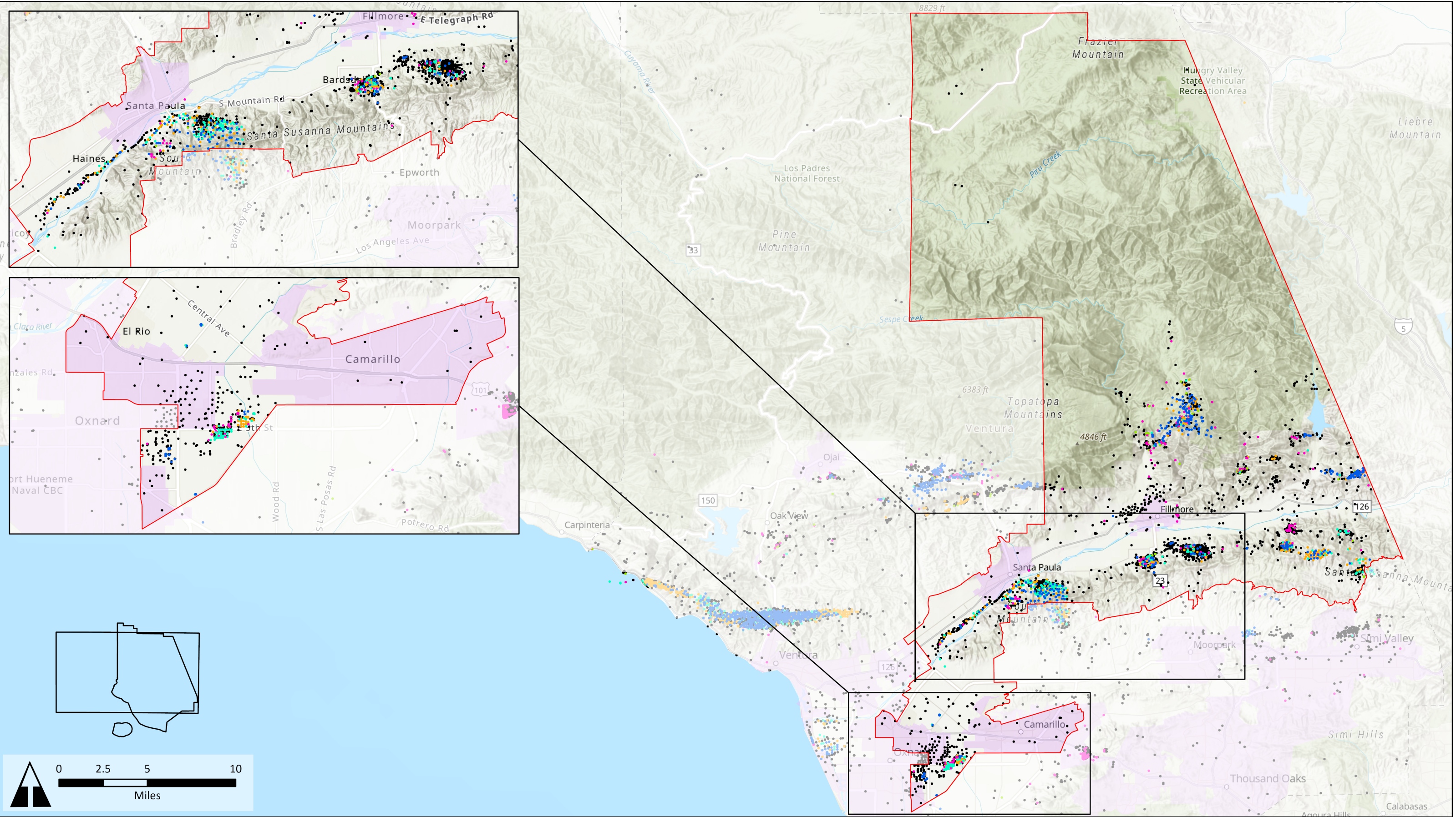


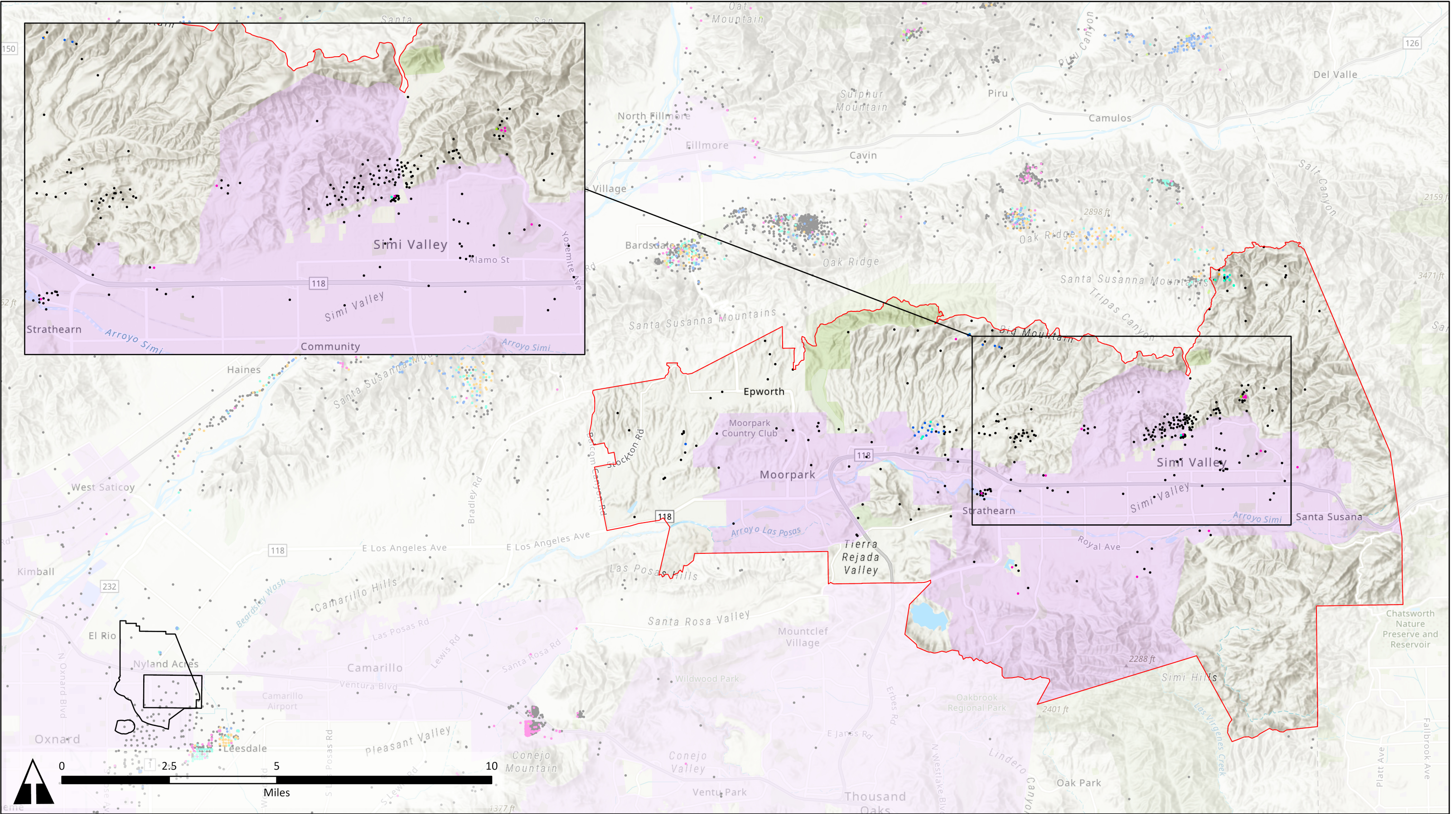
Legend

- Active Well (55 Wells)
- Deserted Well (1 Well)
- Idle Well (47 Wells)
- Long Term Idle Well (54 Wells)
- Likely Orphan Well (89 Wells)
- Plugged Well (383 Wells)
- ▭ Supervisor District 2
- ▭ Incorporated Areas

Oil & Gas Well Map
Supervisor District 2

OIL AND GAS WELLS IN VENTURA COUNTY
SUPERVISORIAL DISTRICT 2





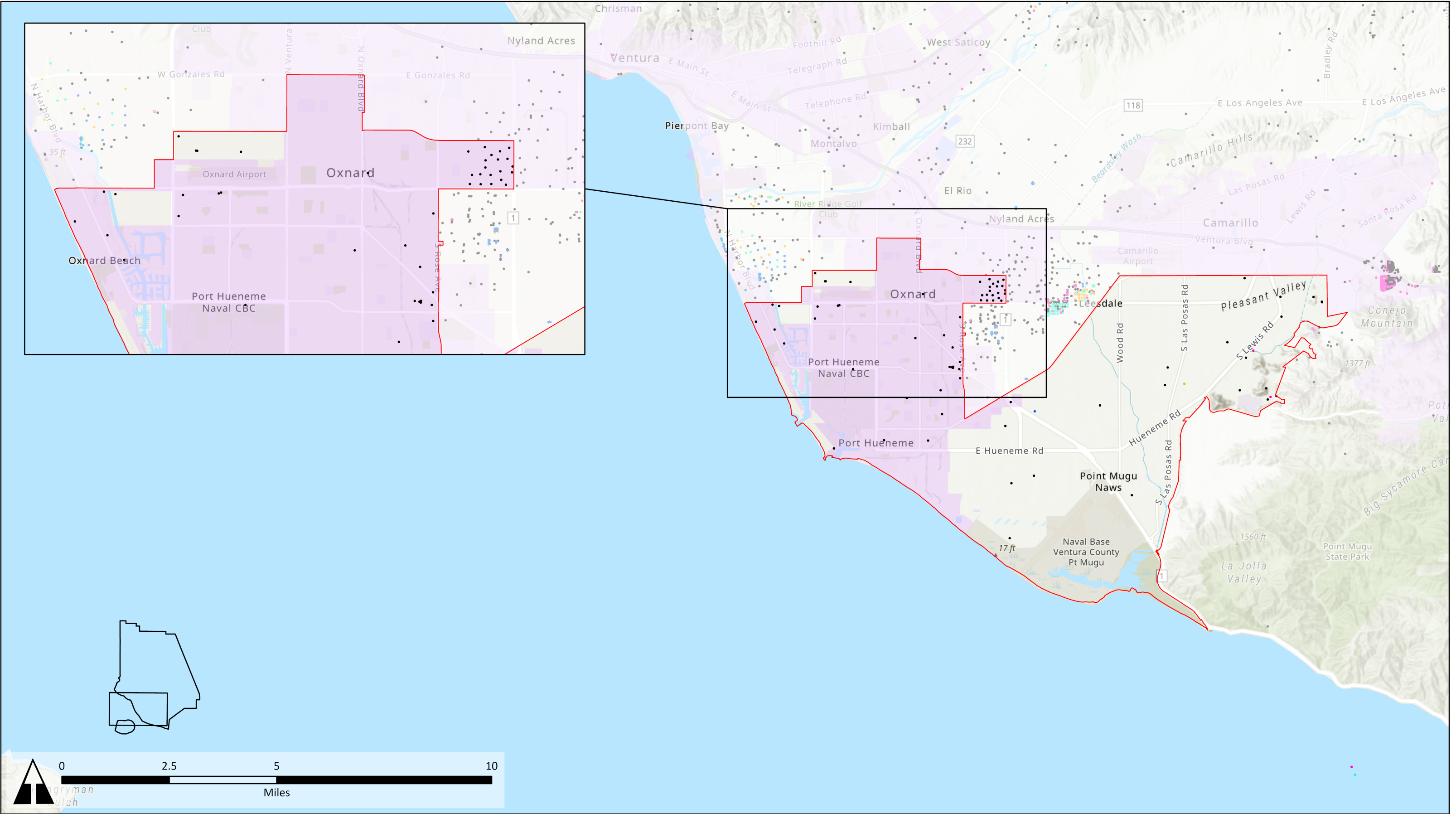
Legend

- Active Well (25 Wells)
- Deserted Well (1 Wells)
- Idle Well (19 Wells)
- Long Term Idle Well (8 Wells)
- Likely Orphan Well (14 Wells)
- Plugged Well (294 Wells)
- ▭ Supervisor District 4
- ▭ Incorporated Areas

Oil & Gas Well Map
Supervisor District 4

OIL AND GAS WELLS IN VENTURA COUNTY
SUPERVISORIAL DISTRICT 4





Legend

- Active Well (1 Well)
- Deserted Well (1 Well)
- Idle Well (0 Wells)
- Long Term Idle Well (0 Wells)
- Likely Orphan Well (2 Wells)
- Plugged Well (73 Wells)
- ▭ Supervisor District 5
- ▭ Incorporated Areas

Oil & Gas Well Map
Supervisor District 5

OIL AND GAS WELLS IN VENTURA COUNTY
SUPERVISORIAL DISTRICT 5