

COVID-19 Surveillance Metrics

Ventura County COVID-19 Surveillance

Friday, July 22, 2022



Report Navigation:

VC Summary
Tables

Vaccination &
Case Rates

Fully Vaccinated
Case Summary

Ventura County
Overview

View By
Community

View Testing
Data

Healthcare
System Data

COVID Deaths
Data

7 Day Average Case
Rate per 100,000

36.6

7 Day PCR Testing
Positivity Rate

15.5%

Health Equity 7 Day PCR
Testing Positivity Rate

18.4%

Current COVID
Hospitalizations

76✓

Previous Day: 78 (-2 -3%)

7 Day Average Daily
Tests per 100,000

296

Please be aware that these measures may differ from other state and locally reported data due to timing and the method of calculation. For example, local data is calculated and published the same day it is received, whereas data reported by the state is from the previous day. Additionally, the state "County Monitoring Measures" use a "lag time" in the calculation to allow for inclusion of cases that may have a delay in reporting. Source: The data displayed here is provided by the California Department of Public Health.

Comparing Our COVID Numbers to Other Regions

Data reported as of 2022-07-19

Region/CA	% ICU Available	Weekly Admissions/100K	% of Current Census Over Baseline Utilization	Patients COVID+ %
Association of Bay Area Health Officers (ABAHO)	24.7	15.8	12	9.6
Greater Sacramento Region Health Officers	28.0	18.4	10	10.1
Rural Association of Northern California Health Officers (RANCHO)	39.0	18.4	3	10.2
San Joaquin Valley Consortium (SJVC)	24.1	22.4	16	11.9
Southern California Health Officers	33.1	17.0	11	9.7
CA	30.3	17.5	12	9.9

Another Masking Order?

At this time, not necessary.

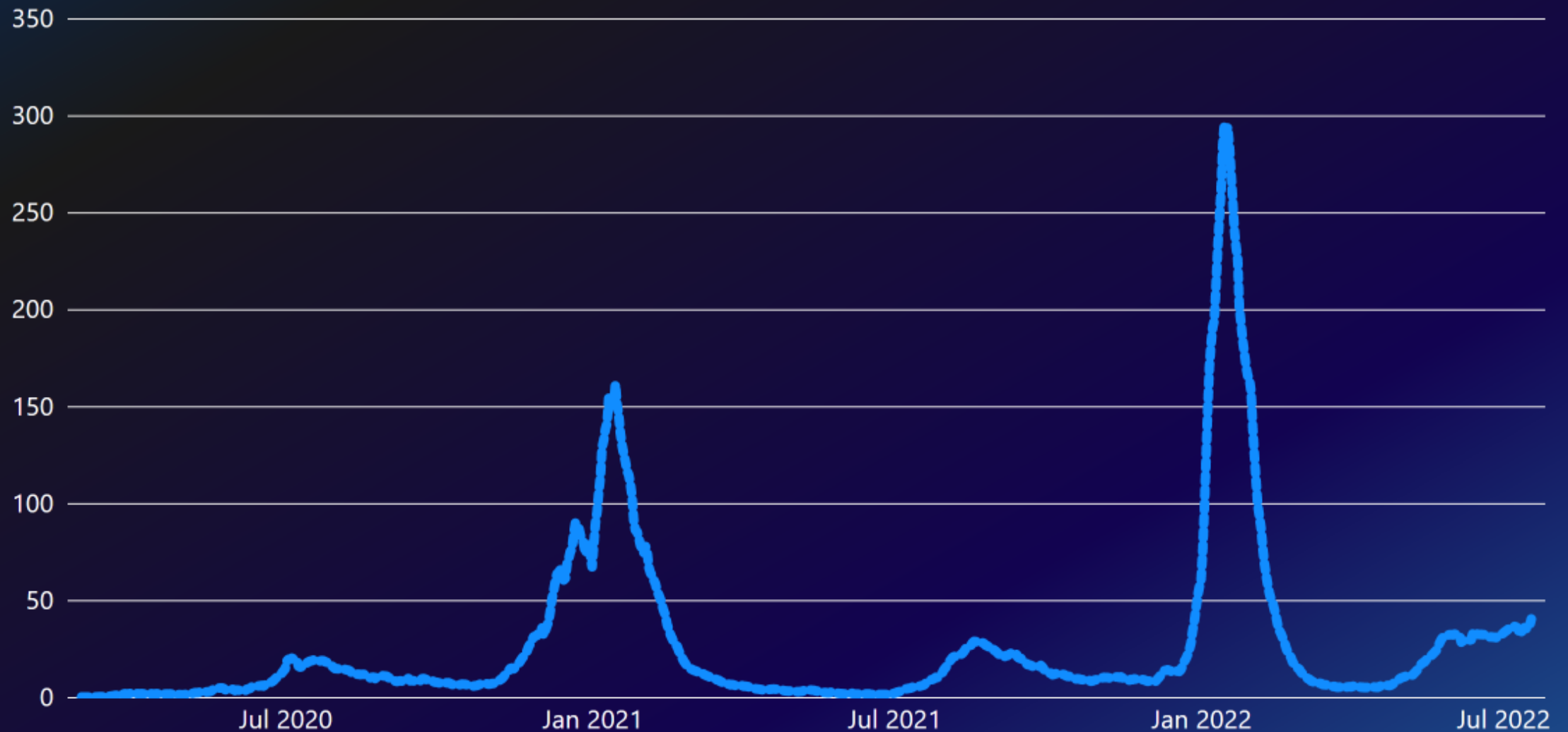
Things that may influence a need for renewed masking orders:

- Hospitalizations
- Deaths
- A variant with increased pathogenicity
- Unknown and/or unexpected

Things that don't require a new masking order:

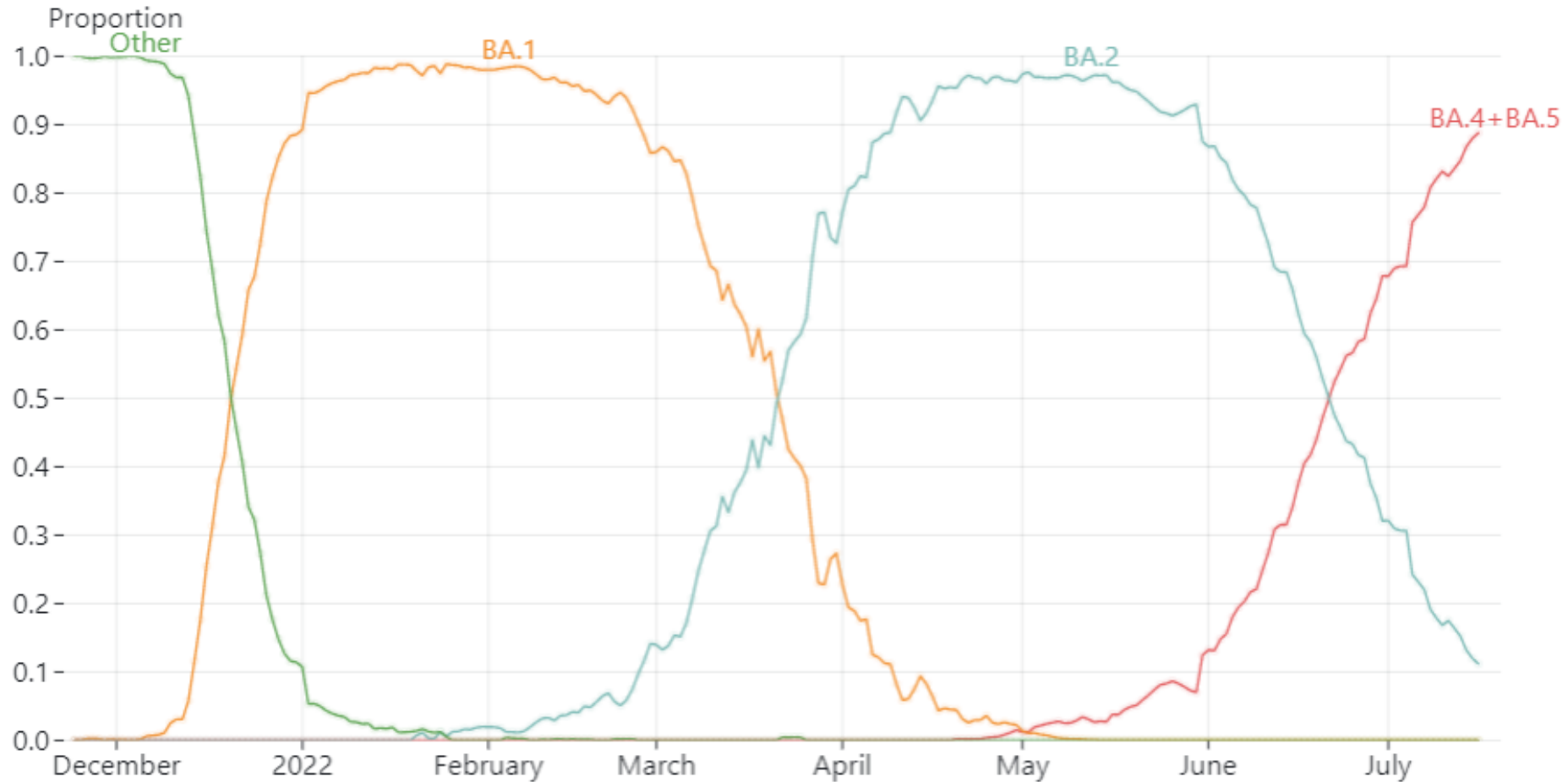
- Increased transmissibility

Daily COVID-19 Case Rate for Ventura County March 1, 2020 to Present

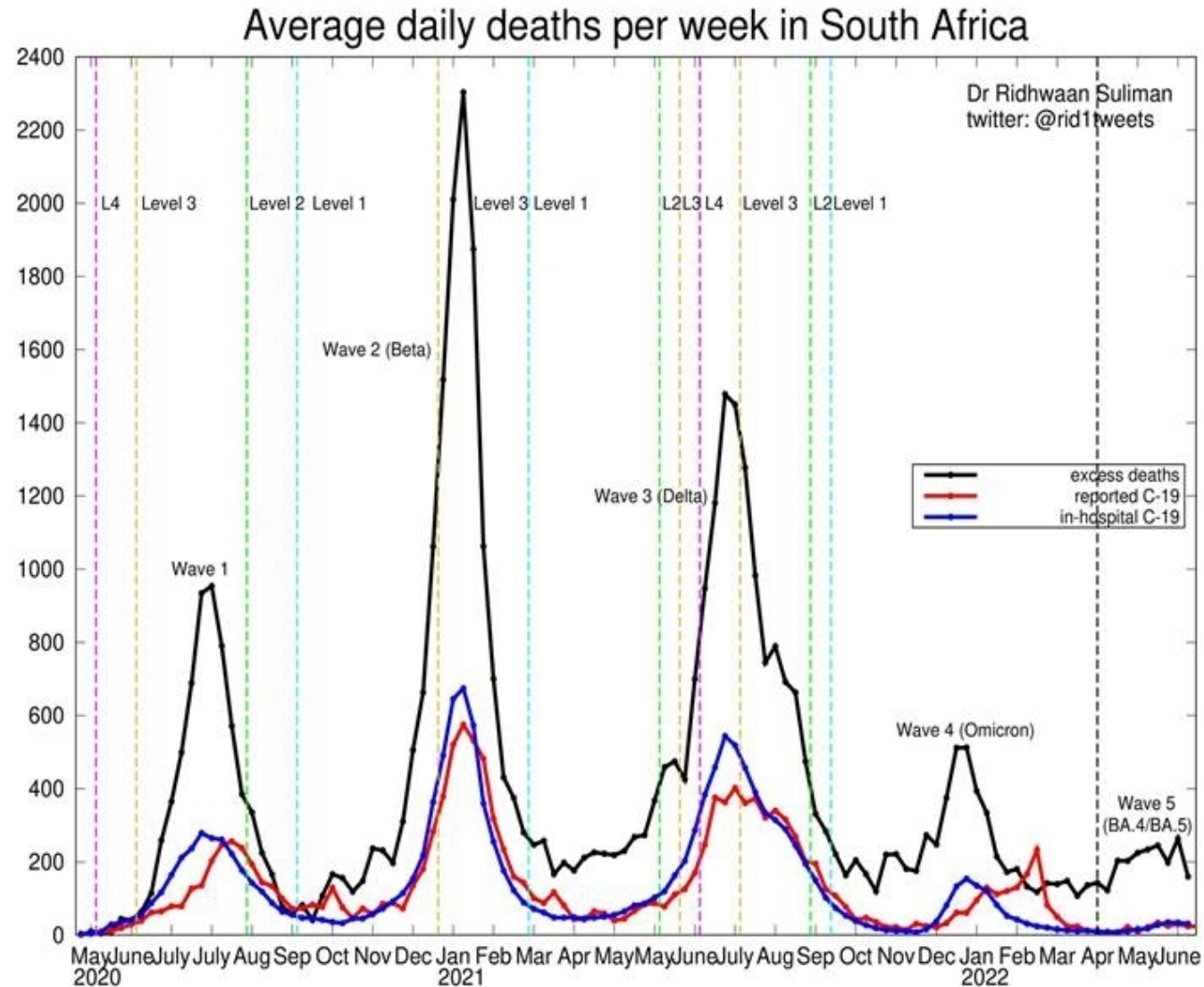


New COVID Variants Arise Constantly and Regularly

California Walgreens COVID-19 variant estimates based on SGTF + rSGTP, through Sat, 16 Jul 2022



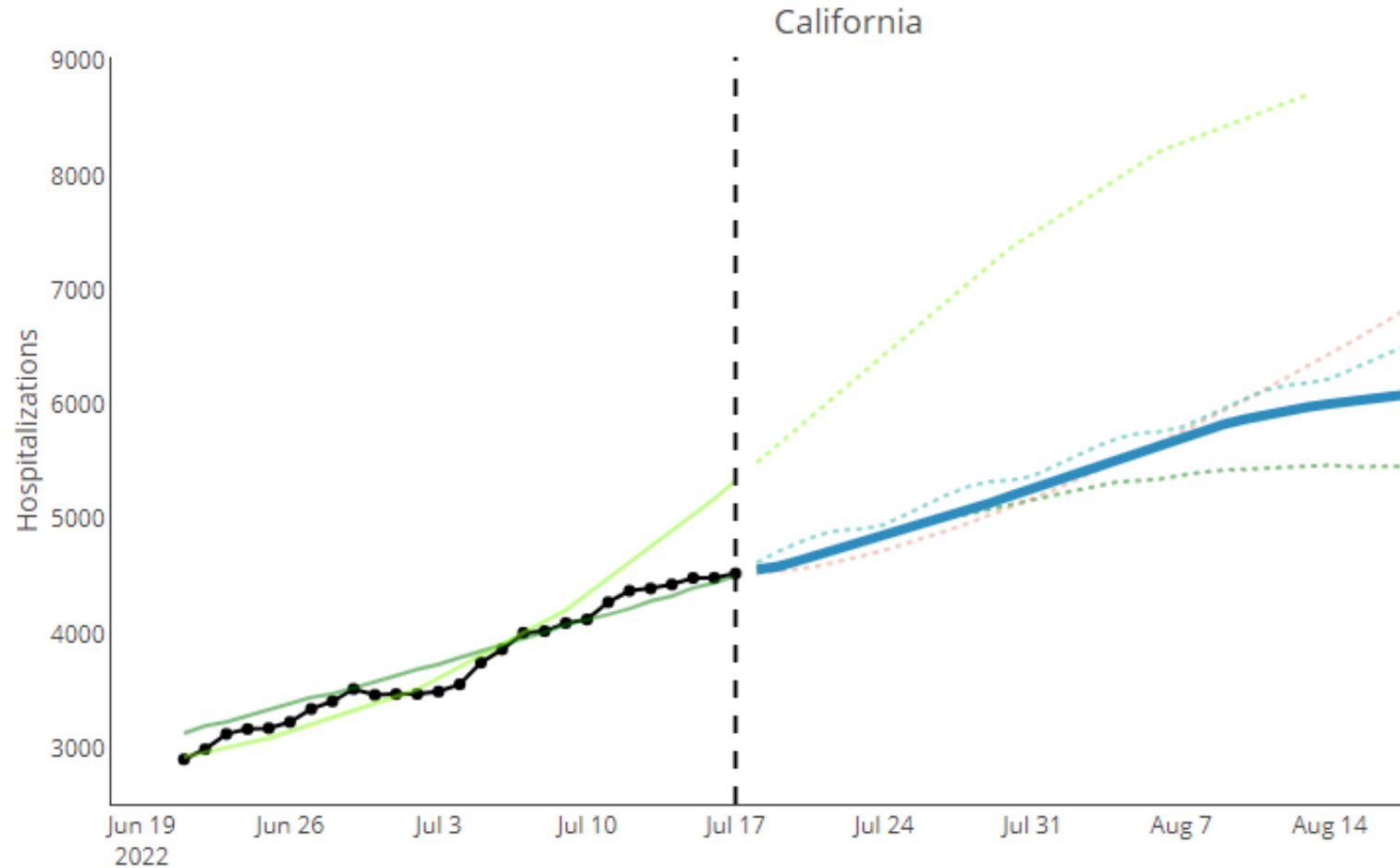
The Current BA.5 Wave



Hospitalization Projections

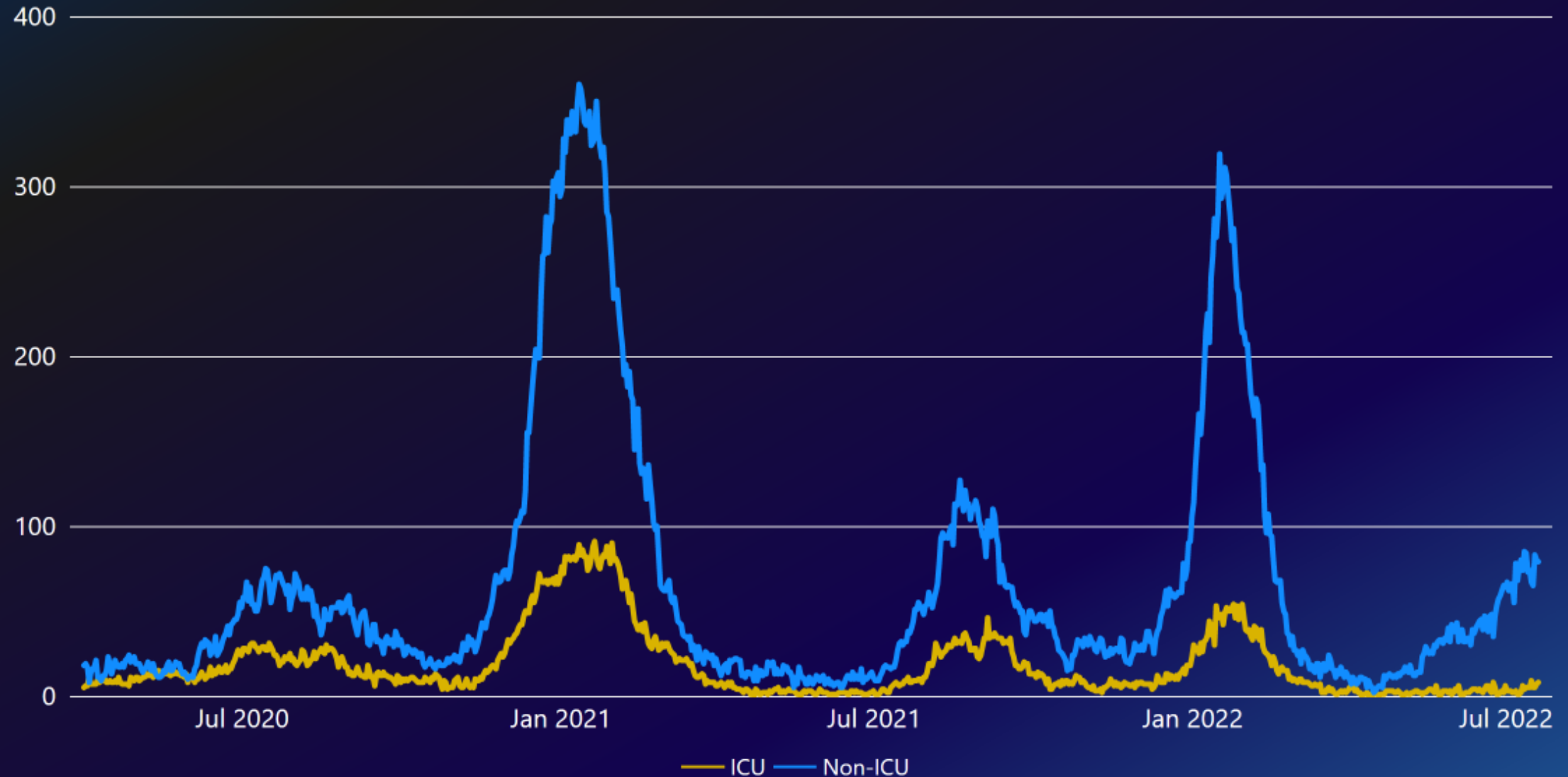
Peak hospital census:

- Observed: ~4800 as of 7/18
- Modeled: ~6000 in mid-August



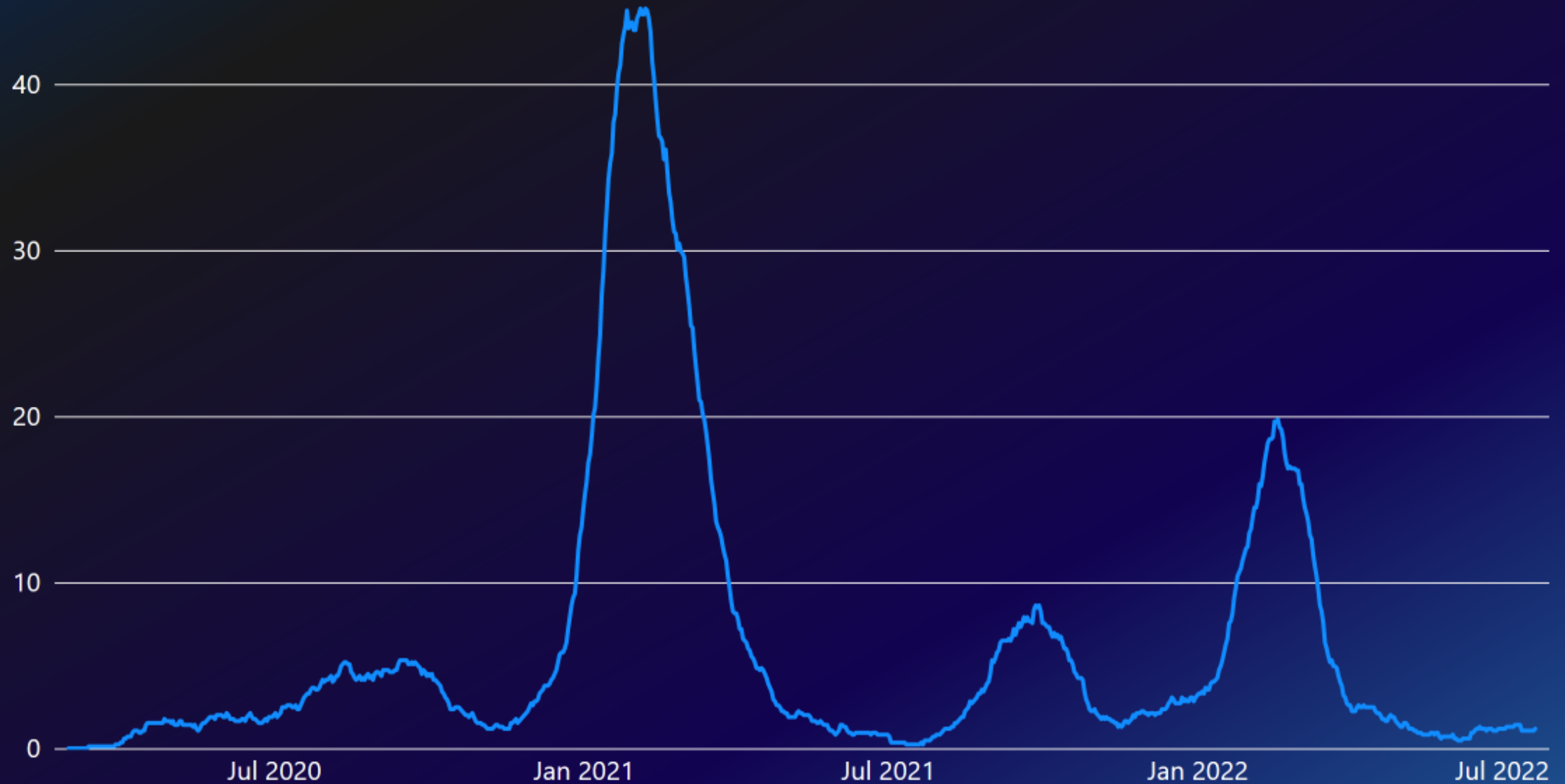
COVID-19 Hospitalizations for Ventura County

April 1, 2020 to Present



COVID-19 30 Day Deaths Per 100K Population for Ventura County

March 1, 2020 to Present



A Word to the Wise

Wear a mask indoor public settings

Wear a good quality mask

Has been and still is strongly recommended

Stay up to date with vaccinations

- Everyone 5 years and older can get one booster
- Everyone 50 years and older can get 2 boosters
- Those 12 years and older with moderate to severe immunocompromise -
2nd

BA.2.75 (A.K.A. “Centaurus”)

Spreading in regions of India where it doesn't have to compete with BA.5, but rather with the variant it evolved from, BA.2

No evidence more pathogenic than other recent Omicrons

It may be more transmissible

Lab study comparing:

- 3 times vaccinated (3XVax) only
- 3XVax with a BA.1 breakthrough infection
- 3XVax with a BA.2 breakthrough infection

BA.2.75 has **similar or less ability to evade antibody neutralization** compared to BA.5

Data from India indicates that BA.2.75 may have already peaked.

There hasn't been a significant increase in hospitalizations or deaths in India from BA.2.75

Change in COVID Vaccine Acceptance

20,000 people in one national survey in November, 2020.

23.8% were vaccine hesitant (76.2% were non-hesitant)

One year later, vaccine uptake was **99% in non-hesitant** participants.

Vaccination rates in the **hesitant** were:

- 80% for those initially unsure
- 78% for those who initially preferred not to answer
- 52.7% for those who answered no

Change in Vaccine Rates by Race Over Time

Survey conducted November 2020:

rates of **high** vaccine willingness were significantly lower among:

- Black (41%)
- Latinx (55%)
- White respondents (72%)

By the end of November 2021, national ≥ 1 -dose COVID-19 vaccination coverage was:

- Black (78.2%)
- Latinx (81.3%)
- White adults (78.7%)

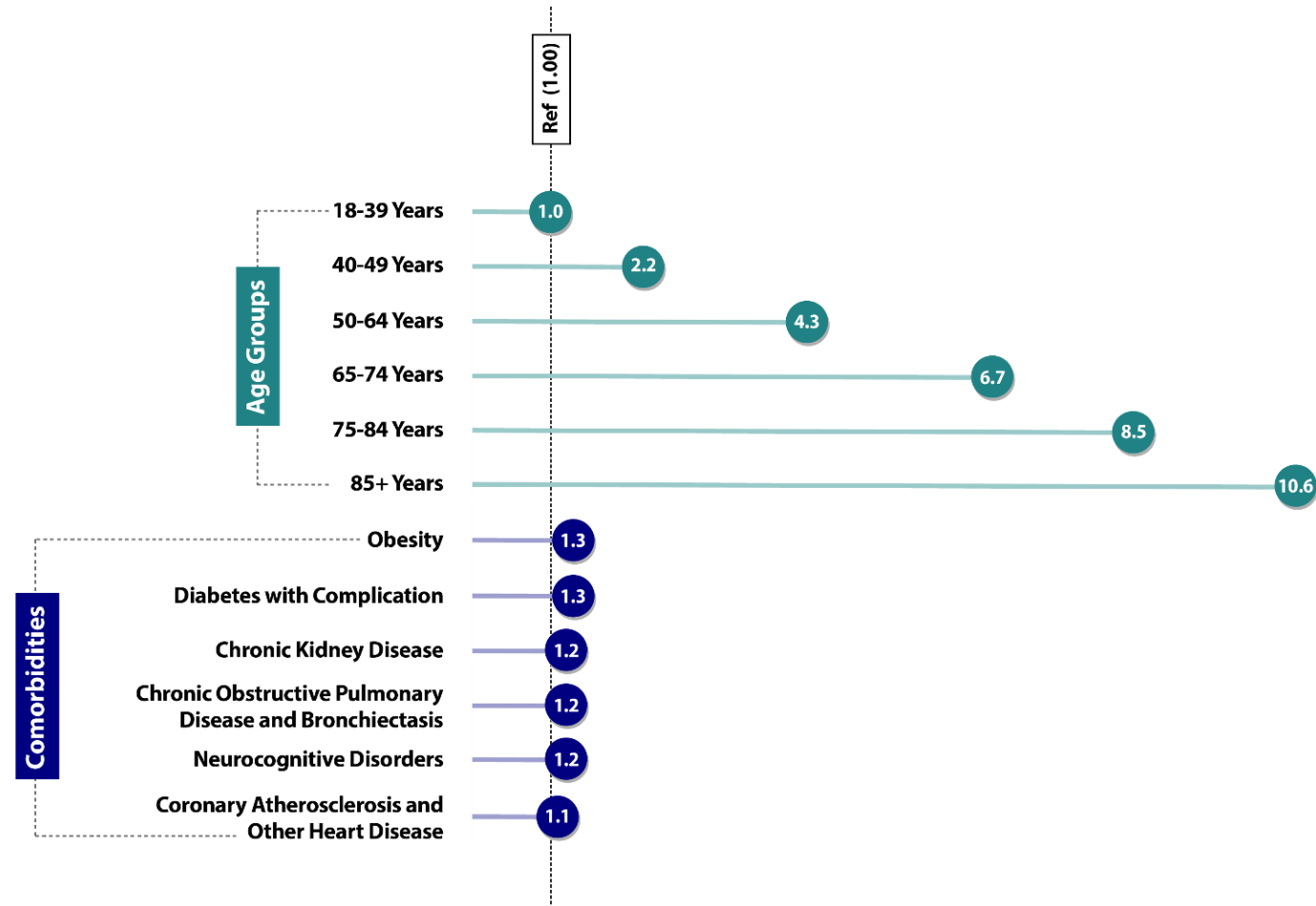
No worse than the flu?

2014/2015	10
2015/2016	10
2016/2017	8
2017/2018	49
2018/2019	12
2019/2020	13

- We tolerate the flu and call it “endemic”.
- How many flu deaths per year are acceptable? 8? 13? 49?
- We have had 1,522 COVID deaths in the last 2 years in Ventura County.
- What interventions are available?
 1. Vaccines
 2. Medications, oral and parenteral
 3. Prophylactic therapy
 4. Improved ventilation
 5. Masks
 6. Outdoors over indoors
 7. Stay home when you're sick

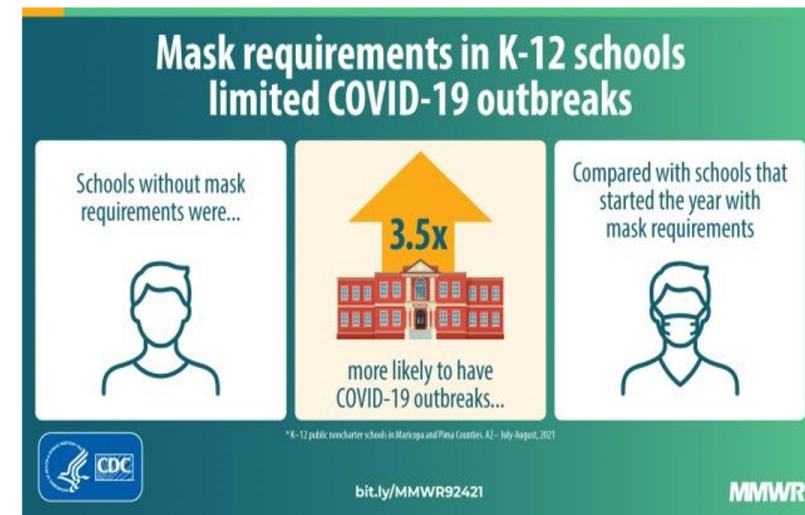
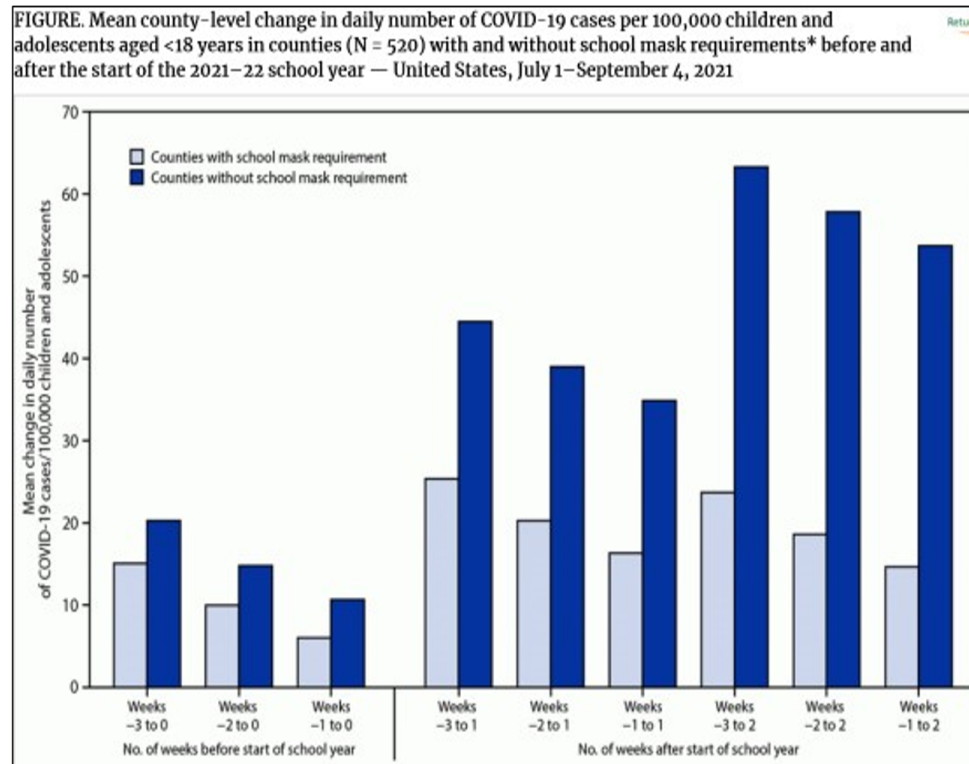
What Puts Us Most at Risk for a Bad Outcome?

COVID-19 Death Risk Ratio (RR) for Select **Age Groups** and **Comorbid Conditions**



Effectiveness of Masks

Research studies from the 2021 -2022 school year corroborate California's experience: Mask policies are effective



← Increases in pediatric COVID-19 case rates during the start of the 2021–22 school year were smaller in U.S. counties with school mask requirements than in those without school mask requirements.

Paxlovid Update

Paxlovid may now be prescribed for an individual patient by a state-licensed pharmacist if the pharmacist is:

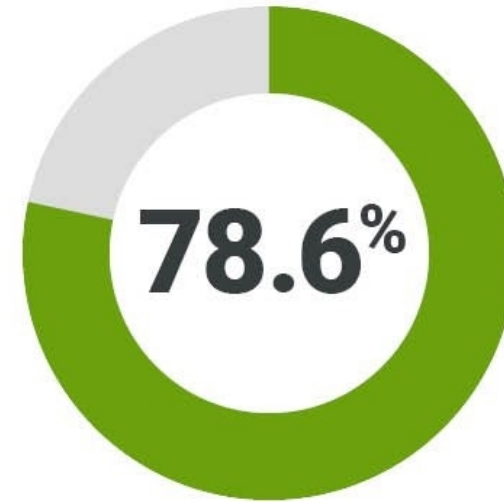
- able to assess kidney and liver function
- able to obtain a list of all medications (prescribed and non-prescribed) that the patient is taking to assess for potential drug interaction
- or, refer an individual patient for clinical evaluation (e.g., telehealth, in-person visit) with a provider if the pharmacist cannot determine the above

There's a New Vaccine on the Block

Novavax vaccine efficacy against mild, moderate or severe COVID-19:



among adults



among people
aged 65 years or older

Healio 

Summary

- BA.5 is causing the majority of new cases in CA and is clearly outcompeting BA.4
- New “Centaurus” BA.2.75 sub-variant probably on the horizon
- New lab study finds **less immune evasion** among the Centaurus variant breakthrough infections than BA.4/5
- With the possibility of lesser pathogenicity of the Centaurus variant but probable high transmissibility, COVID virus is doing what we hoped it would do
- Please get fully vaccinated and please follow Public Health’s strong recommendation to wear a mask in indoor public spaces. A word to the wise.