

South Coast Missing Linkages Study, 2008

- SC Wildlands
- The Wildlands Conservancy
- The Resources Agency
- U.S. Forest Service
- California State Parks
- California State Parks Foundation
- National Park Service
- San Diego State University
- The Nature Conservancy
- Conservation Biology Institute
- Santa Monica
- Mountains Conservancy
- Wetlands Recovery Project
- Mountain Lion Foundation
- Rivers and Mountains Conservancy
- California Wilderness Coalition
- Wildlands Project

Incentive-Based Wildlife Corridor Protections

Meet 6 conditions → Ministerial Permit

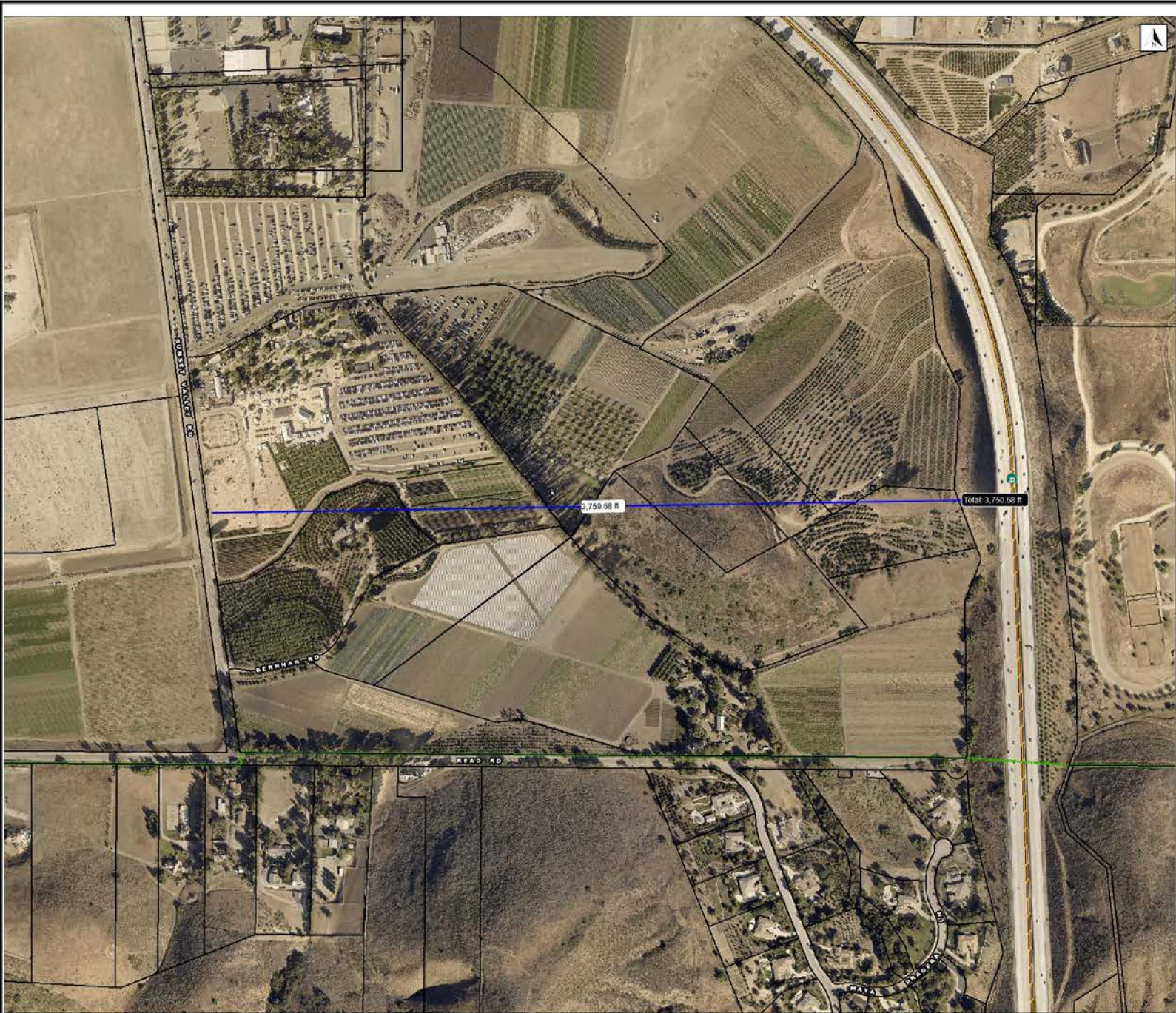
- 1) Lighting (equivalent to Dark Sky Ordinance)
- 2) Fencing
- 3) Creek setbacks
- 4) Clustering
- 5) Setback from wildlife crossing structures
- 6) Planting of invasive plants

If can't meet the conditions → Discretionary Permit

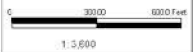
Experts Agree: Tierra Rejada Valley is a Critical Wildlife Passage Area (CWPA)

- 1) the existence of intact native habitat or other habitat with important beneficial values for wildlife;
- 2) proximity to water bodies or ridgelines;
- 3) proximity of critical roadway crossings used by wildlife;
- 4) likelihood of encroachment by future development, and within which wildlife movement and plant dispersal could be easily disturbed by development; or
- 5) presence of non-urbanized or undeveloped lands within a geographic location that connects core habitats at a regional scale.

From community Q&A – What makes a CWPA?



- Legend**
- Streets
 - 1:24000
 - 1:9000
 - City Boundary
 - Cemeteries
 - Fairview
 - Maple Park
 - Oak
 - Overland
 - Post Hills
 - San Bernardino
 - Santa Fe
 - San Valley
 - Thousand Oaks



Notes