

MUSEUM <sup>OF</sup>  
VENTURA  
COUNTY

YEAR IN REVIEW  
2018



*Discover, Preserve, Explore, Celebrate*





## Message from Barbara Barnard Smith Executive Director Elena Brokaw



It has been an exciting and eventful year for the Museum of Ventura County, and we are honored to share highlights of 2018 with you, our family of friends and supporters.

This year marked the launch of our official five-year Reinvention Plan, designed to ensure the long-term sustainability and success of the MVC. The plan has six pillars:

- |                          |                          |
|--------------------------|--------------------------|
| ■ Accessible Collections | ■ Robust Partnerships    |
| ■ Compelling Vision      | ■ Sustainable Funding    |
| ■ Relevant Programs      | ■ Transparent Governance |

In each of these, the Museum has made significant progress – but we still have much more to achieve.

In the following pages, you will see photos of diverse exhibits and programs, read about our progress on consolidating and conserving our collections, learn about plans to digitize our archives and hear about the lessons we learn as we work to collect and record monumental events in our County as they happen, such as the Thomas, Woolsey, and Hill fires and the Borderline tragedy.





What we can't include in these pages is the heart and soul of this Museum and its history: the individual people who have given, and continue to give, so generously to ensure that the Museum thrives. Every day, dozens of people work to provide the programs you will read about, to strategize on major initiatives, to research new methodologies and to build resources – all in order to make this 106-year-old institution thrive in service to its community.

You, as a recipient of this annual report, are one of those people who are helping to ensure that this museum is here for another century. Your actions in support of the MVC are critical to our continued success. I hope you enjoy reading about all of the wonderful things your support has made possible. Thank you for your part in sustaining the Museum of Ventura County.

*Elena Brokaw*

*Barbara Barnard Smith Executive Director*



# The Museum of Ventura County: We Are Your Museum



## CELEBRATING VENTURA COUNTY'S ART, HISTORY AND CULTURE

The Museum of Ventura County opened its doors in 1913 in the newly built Ventura County Courthouse (now Ventura City Hall) as the Pioneer Museum. It displayed artifacts including Chumash, Spanish and Mexican-American objects. Today, the Museum occupies two locations — the museum located on Main Street in Ventura, which includes the Museum's Research Library and Archives, and the Agriculture Museum located in Santa Paula. Both sites present innovative art and historical exhibits, educational programs, community outreach and collaborations encompassing visual arts, film, music, spoken word, literature, dance and theater. The Museum explores Ventura County's past, present and future, engaging visitors and encouraging them to share their own perspectives, questions and stories.



## PRESERVING THE PAST

The Museum's Research Library and Archives maintains a deep and rich collection that illustrates the evolution and history of Ventura County. This year, the Research Library and Archives consolidated its offsite storage collections into space donated by the County of Ventura. We have begun the process of cataloging and digitizing the collection in order to make our county's history accessible. The task of moving these collections was initiated by the Museum's longtime librarian Charles Johnson, who recently retired from the position he held for 29 years. Our new Research Library and Archives Director Deya Terrafranca has jumped on board to continue the progress on this large-scale accessibility project.





## EXPLORING THE COLLECTION

The Museum's Main Street campus includes the Museum's permanent collection and changing exhibit halls, a gallery dedicated to the George Stuart Historical Figures®, the Howard Boroughs Children's Garden, The Martin V. and Martha K. Smith Pavilion and the Research Library and Archives collection including:

- Over 150,000 resources pertaining to Ventura County history and culture
- An online catalog of over 5,000 books and monographs
- Over 42,000 photographs and innumerable negatives
- Articles of Incorporation for businesses throughout the county from 1873-1970
- Over 550 glass plate negatives, including a collection of John Calvin Brewster's photographs
- More than 3,300 postcards
- Microfilm of 15 local and regional newspapers dating as far back as 1851. This includes the 104-year-run of the Santa Paula Chronicle and 93 years of the Oxnard Press Courier.



## DISCOVERING COMMUNITY

Located in the historic Mill building (1888) in downtown Santa Paula, the Agricultural Museum explores the region's farming and ranching history, engaging visitors with its broad collection of tractors, farming implements, a living beehive and interactive activity stations for children. These exhibits tell the story of the importance of agriculture in Ventura County and around the world.





Exhibits That Engage,  
Enrich, Explore, Excite.





# 2018 Exhibits

## IN HIGH STYLE: THE PHOTOGRAPHY OF NEAL BARR

MVC

Museum visitors traveled the changing fashion trends and cultural shifts over four decades through the artistry and uniqueness of photographer Neal Barr's fashion and celebrity images. A Ventura native, Barr gave a gallery talk on his remarkable career and donated the exhibit artwork for sale with proceeds going to support the Museum.

## IN STYLE: FASHION FROM THE COLLECTION

MVC

The Museum presented period fashion from its permanent collection. Fashion historian Shelly Foote gave a gallery talk on how garments in the Museum's collection relate to high-style fashion trends.

## LETTERS FOR THE LOST

AG

Marking the 90th anniversary of the St. Francis Dam Disaster, one of America's worst civil engineering disasters of the 20th Century, the Museum provided an intimate look at never-before-seen letters of correspondence between Oliver Reardon, Ventura County's coroner in 1928, and the families and friends desperately seeking answers of missing loved ones.

## PLEASE WRITE BACK!

MVC

The Museum pushed the envelope with a thought-provoking pop-up exhibit encouraging visitors to experience first-hand an era dependent on written correspondence.

## PATTERNS ON THE LAND: MAPS OF THE COUNTY

MVC

This pop-up exhibit showcased a collection of rare and antique topical maps of Ventura County selected from the Museum's extensive archives.

## GOOD EARTH: TILLING THE SOIL

AG

Museum-goers explored soil preparation techniques from the late 1800's to the mid-1900's through tilling equipment hand-picked from the Museum's extensive farm implements collection. Speaker Steven Donovan presented "Land Preparation in Ventura County."

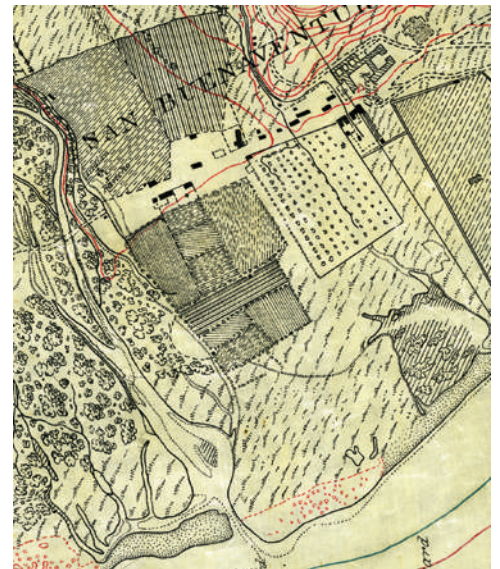
## BLACK AND WHITE AND READ ALL OVER

MVC

An action-packed exhibit of artwork celebrating a century of comic book art, zines and graphic novels including well-known works by legendary local and regional comic artists who shaped the medium of comics as an art form. The exhibit included works by Jack Kirby, Patrick McHale, Sergio Aragonés, Hernandez Brothers and Lalo Alcaraz.

Artist and Ojai resident Sergio Aragonés, famous for his comic book "Groo the Wanderer" and his long-time career as cartoonist for MAD Magazine, was featured speaker for the "Speaking of Ventura County" series.

*The Museum proudly presents a diverse range of exhibits that engage and explore current and emerging trends as experienced through the events, artists and artifacts that shape our culture and community over time.*





## AT TABLE: THE BUSINESS OF FOOD AND COMMUNITY

MVC

***At Table: The Business of Food and Community*** celebrated and explored the cultural impact of immigration through a shared love of food in a timely look at how the influx of immigrants into the region has influenced local recipes, menus and dining habits, as well as food-related businesses and restaurants.

***Rise Up! Bakeries and Panaderías*** presented an historical look at the bakery business in Ventura County including the local Mexican panaderías that are popping up everywhere.

***You Ate What?*** showcased food-inspired art from the Museum collection and local artists.

***The Kitchen Table***, a community-based exhibit, invited artists and community members to create a table place setting reminiscent of one remembered from growing up.

Coinciding with the exhibit opening was the **Ventura Chamber of Commerce's 2018 TASTE** event in the Museum's pavilion/courtyard, with more than 300 guests enjoying samples from over 40 local restaurants, wineries, breweries, and bakeries/confectioners.

### Table Talk

MVC

Nationally syndicated columnist Gustavo Arellano moderated a panel discussion with Ventura County Star Food Editor Lisa McKinnon, Alison Costa of Food Scene Ojai and Sarene Wallace from Edible Ojai and Ventura County magazine.

### Eat Less Water

AG

Nationally recognized author and Oxnard resident Florencia Ramirez shared stories of America's food producers who grow food with less water from her book "Eat Less Water," as featured speaker for "Speaking of Ventura County."

### Museum Matinee Series

MVC

The Museum and the **Ventura Film Society** co-presented the first Museum Matinee Series with three films, "City of Gold," "Chef" and "Tortilla Soup" in conjunction with the *At Table* exhibit.

## AG AIR: AVIATION IN AGRICULTURE

AG

A look at the daredevils, barnstormers and crop dusters of yesteryear.

## THE DIRT ON TRACTORS: THE EVOLUTION OF THE MODERN TRACTOR

AG

Rare and original tractors from 1914 to the present.

## TWEET THIS!

AG

Life-sized paintings by Ventura artist MB Hanrahan accompanied an interactive pop-up exhibit for children of all ages featuring bird facts, bird sounds, eggs and nests.

"Speaking of Ventura County" presented Guatemalan-American oologist, biologist and author, Rene Corado, as featured speaker.







### VAQUERO CAMPFIRE

AG

A nostalgic look at the history and traditions of the *Vaquero*, Spanish for cowboy or cattle driver.

### CUBAN ARTIST PEDRO GONZÁLEZ PULIDO

MVC

The Museum hosted the U.S. premiere of an exhibit by prominent Cuban artist Pedro González Pulido featuring a series of paintings inspired by the documentary, "Hearing is Believing," produced by Ventura filmmaker Lorenzo DeStefano about renowned musician, and Oxnard resident, Rachel Flowers.

### NATIONAL AIDS AWARENESS MONTH: AIDS HISTORY AND QUEER ART

MVC

Designed to raise awareness of the disease and its impact in Ventura County, the exhibit featured pieces from the Gold Coast Archives, the county's most comprehensive set of LGBT and HIV/AIDS historical documents and artifacts, now part of the California State University, Channel Islands' historical papers.

#### Bringing The Boys Home: AIDS Memorial Quilt project

Four blocks of quilt panels from the NAMES Project AIDS Memorial Quilt, handsewn by members of the NAMES Project Ventura County in the 1990s, brought back by the **Quilt Project Gold Coast**, Ventura County's newest AIDS nonprofit.

#### Summoned and Shaped: Traveling Together Into Our Belovedness

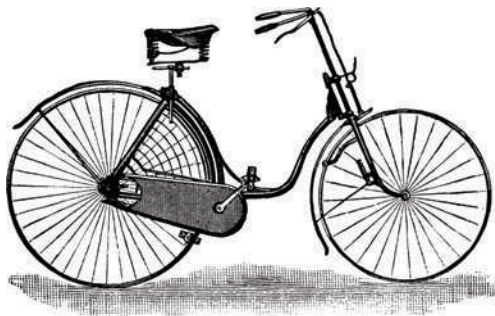
Author and chaplain Pat Hoffman shared stories about her years of HIV/AIDS ministry.



### ARTLIFE/JOE CARDELLA TRIBUTE

MVC

A retrospective celebrating the life of Ventura artist and ARTLIFE publisher Joe Cardella who passed away May 15, 2018. ARTLIFE magazine contributors held a panel discussion and honored Cardella's legacy with readings of shared poetry as published in the periodical.



### AVANT GARDE: LORI COZZEN GELLER

MVC

Inspired Geometric Sculpture created in metal, wood or fiberglass overlaid with automotive paint.

### BALANCING: HELLE SHARLING TODD SCULPTURES

MVC

Colorful sculptures created by Danish artist Helle Sharling Todd.



### PEDAL PUSHERS! BICYCLING IN VENTURA COUNTY

Shown in conjunction with the Amgen Tour of California, the exhibit showcased the bicycle as an object of design as well as personal expression.

### ADDITIONAL 2018 POP-UP EXHIBITS INCLUDE:

#### Architects International Association of Ventura County

#### Borein Drawings and Western Art from the Collection

(at Simi Valley Cultural Center)

#### History of the East County

Ventura County Credit Union and the Museum partnered to display historical pieces at the Moorpark, Simi Valley and Thousand Oaks branches.



# Fun Fall Celebrations

## VENTURA COUNTY FAIR: ART OF JOHN ROBERTSON

### GALLERY TALK: JOHN ROBERTSON

AG

Grand-scale acrylic paintings by Ventura artist John Robertson depict family favorite scenes from the Ventura County Fair. Robertson shared stories during a gallery tour and talk.

## LABOR DAY TRACTOR FAIR

AG

Over 1,900 visitors attended the 6th annual free Vintage Tractor Fair at the Agriculture Museum on Labor Day. Attendees enjoyed an exhibit of rare and unique vintage tractors, live music, food trucks, petting zoo, tractor and fair-themed activities and crafts for all ages.

## SUMMER CONCERT SERIES

AG

The Ag Museum kicked off its Summer Concert Series with the authentic Cajun music of Fontenot, Pappion & Plauche. Concert-goers escaped the heat with the cool sounds of Ray Jaurique and the Uptown Brothers.

## FOLK FESTIVAL

AG

Over 450 attendees enjoyed the Museum's free folk festival featuring Los Angeles-based singer-songwriter Misa Della and Ventura County songwriters and musicians J. Peter Boles, Donna Lynn Caskey and Paul Belgum.

## Día de los Muertos

MVC/AG

Together with the **Mexican Consulate**, the Museum presented free Día de los Muertos celebrations at both locations with altars created by Club Uriangato de Guanajuato, Guanajuato Master craftsman Eduardo Serrano Moreno, Catrinas and current pageant winners from different states in Mexico dressed in official costumes. Performances included Oxnard College's Ballet Folklórico Mestizo, Aztec dancers, indigenous musical group TRIBU and guitarist Javier San Roman. Children enjoyed traditional crafts, Mexican candy, face painting, a photo booth and more. More than 700 visitors attended at the Ag museum, and 350 attended the Ventura location festivities.

## SANTA PAULA GHOST WALK

AG

**Santa Paula Theatre Group** presented its annual haunted walk with "ghosts" in character sharing historically based spooky tales.

## PHOTOGRAPHY OF CRAIG OWENS

MVC

This exhibit featured historical and haunting photography of hotels and inns of Ventura County.

## George Stuart Historical Figures Collection®

### Night of the Nosferatu

Figures not seen in nearly forty years tell the fictional tale of the original vampire, Count Dracula.

### Renaissance and Reformation

Famous figures from the 15th and 16th centuries leading the European Renaissance of the arts and sciences and the religious Reformation.

### Lost Empires: The Conquest of the Americas

Figures portray the early beginnings of the Mayan civilization and its advancements in art, architecture and mathematics, evident in 500 BC.







## HAUNTED BY HISTORY

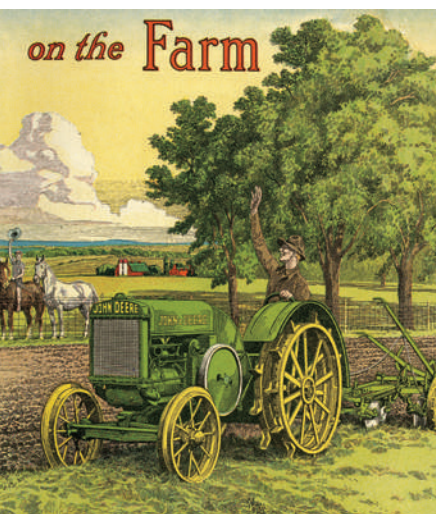
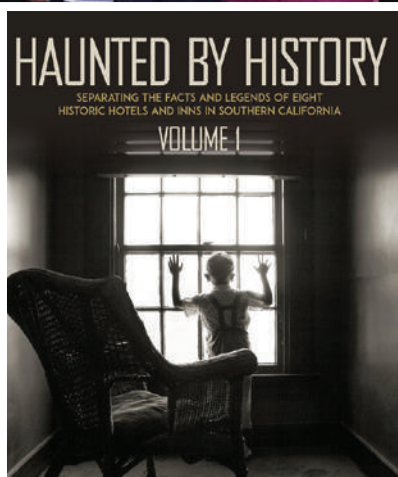
MVC

Craig Owens shared haunting facts about eight historic hotels in Southern California and the origins behind their ghost stories from his book "Haunted by History" as featured speaker for "Speaking of Ventura County."

## LOS POSADAS

AG

The Ag Museum hosted a free community Las Posadas celebration. Visitors enjoyed a performance of "The Apparition of the Virgin of Guadalupe" by the Inlakech Group, followed by traditional Las Posadas festivities including music by local acoustic artists Mr. G and Xavier Montes, a holiday piñata game for children and nourishing Mexican sweet bread and champurrado.



## AIA NIGHT AT THE MUSEUM

MVC

In May of 2018, the American Institute of Architects Ventura County held its Student Scholarship Fundraiser benefitting Ventura County students interested in pursuing a career in architecture. The "Night at the Museum" honored the scholarship recipients and recognized local architectural talent by providing a space to exhibit their latest projects and original artwork.





# Enlightening Education

*"I'm proud to say that I submitted a painting and attended the Ventura Unified School District's first annual art show. I had a great time during the gallery opening and I loved seeing so many other artists in my community come out and show their work. I can't wait to see what will happen this year."*

*—Rhianne Martinez,  
Ventura High School Senior*



## K-12 SCHOOL TOURS

The Museum offers standards-based tours in the arts, history and science. Under the direction of the Museum's education manager, curriculum is developed, and tours are provided by a dedicated team of trained docents. This year, the Museum had 5,698 students participate in its education program, with over 4,500 coming from Title I schools. Tours for Title I schools are entirely free, funded through grants.

## INTERNSHIPS

The Museum offers a wide selection of internships for students wishing to pursue educational opportunities. In 2018, the Museum hosted interns from CSUCI, UCLA, Franciscan University of Steubenville and St. Bonaventure High School.

## ARTS EDUCATION

Ventura Unified School District exhibited the first all-student show in April-May of 2018, showcasing artwork from elementary through high school. The exhibit was complemented with performances by the Cabrillo Middle School Orchestra and Jazz Band.

Summer outdoor painting classes for students aged 7-12 were offered in the Children's Garden.

## SCHOLARSHIPS

Five \$1,000 scholarships were awarded by the **Museum's Fine Arts Committee** to continuing high school and college students studying fine art, photography and graphic design. The Bonita C. McFarland Endowment Fund provides this important scholarship funding.

## ARTIST-IN-RESIDENCE

Ryan Carr completed his role as the Museum's first artist-in-residence, with his solo show, *Natural State*, a series of large-scale paintings, drawings and letterpress technique showcasing the natural beauty of Southern California.

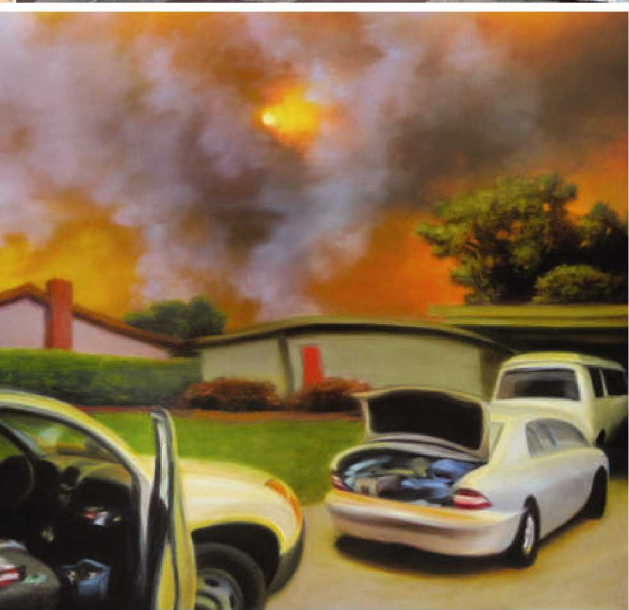
## ADULT DRAWING CLASSES

To meet demand after figure drawing classes continuously filled to capacity, portrait classes were added to the adult drawing schedule. These popular free events meet twice-monthly to draw live, clothed models.











# Building Community



## CARING FOR OUR COMMUNITY

### Documenting for Future Generations

Beginning with the Thomas Fire in December of 2017 and continuing through the Hill and Woolsey fires in November 2018, the Museum has worked with **Ventura County Fire and Sheriff departments**, other agencies and the Ventura County public to create an historical archive of these devastating fires. Gathering stories, digital images and physical artifacts, the Museum is assembling the historical record of the extraordinary rescues, bravery, sacrifice and service of the first responders, as well as the agencies and individuals who opened their hearts and hands to help those in need.

In December, the Museum opened two exhibits, *Thomas Fire Reflections* and *Wrapped with Care: Thomas Fire Quilt Relief Project*, marking the one-year anniversary of the start of the Thomas Fire. Both exhibits reflected the tragic loss and the community's healing response. The Museum, **Ventura County Library** and **Ojai Valley Museum** supported **CAPS Media's** production of "A Perfect Firestorm; the Thomas Fire Story." The film premiered at the Museum in December.

### Rapid Response Collecting

Rapid Response Collecting (RRC) is a strategic process used by museums in response to major events such as a mass shooting. When Ventura County experienced its own tragic loss of life on November 7, 2018 with the mass shooting at the Borderline Bar and Grill in Thousand Oaks, the Museum used the RRC guidelines to gather photos, artifacts and more to document the story of the shooting and honor its victims and survivors for future generations.

**Pop-up Exhibit:** *Seeking Safety*

**Wearable Art Fashion Show:** *Rising from the Ashes*

**Rubicon Theatre Company:** *From the Ashes, Harmonix Concert*

**Community Conversations:** Panel discussion on "Restoring Main Street Vitality" in the wake of the Thomas fire.

The Museum is assembling the historical record of the extraordinary rescues, bravery, sacrifice and service of the first responders, agencies and individuals who opened their hearts and hands to help those in need.



## CONNECTING COMMUNITY

### MUNCH—Music + Lunch

Free live music by local talent every Thursday in the Museum courtyard, April through September.

### Free First Sundays

Thanks to the generous support of Museum friends **Mimi Allin** and **TOLD Corporation**, the Museum hosts Free First Sundays with free admission and activities for kids and families.

### Appreciation Weekends

Each month the Museum offers free-admission weekends to various groups including community workers, military and residents of featured ZIP codes.

## NOTABLE SPEAKERS

**Ivor Davis**, The Day RFK Died

**Brooke Halpin**, The Beatles White Album 50 Years Later

**Gwen Alferes**, Forgotten Foster Park

**Yunte Huang**, Inseparable

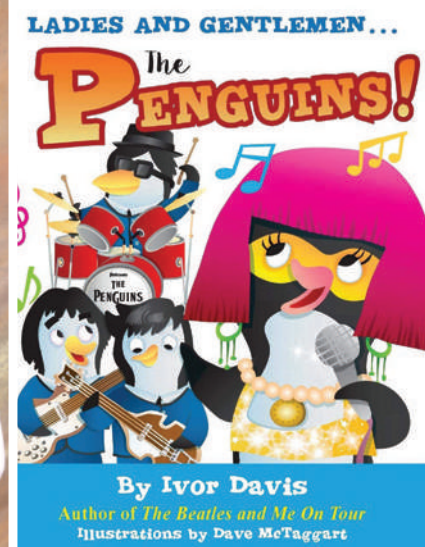
**Kyle Thille**, Ventura Coast Brewing Company

**Robert Warnagieris**, The Navy at Point Mugu from 1945

**David Mirisch**, Five decades of Hollywood memorabilia and celebrity stories

**William Finnegan**, Barbarian Days: A Surfing Life (Presented by the Ventura County Library)

**Kathleen Contreras**, Harvesting Friends





The Museum of Ventura County values its many partner agencies and proudly collaborates to provide venues, marketing and outreach assistance in support of community programs.

## COMMUNITY COLLABORATIONS

In 2018 the Museum sponsored twenty non-profit and governmental organizations offering programs in Ventura and Santa Paula. These programs presented opportunities for members of the public to enjoy world-class music, learn about drought-tolerant gardening techniques, participate in the creation of a public art project and more. 2018 community partners include:

**Camerata Pacifica Concert Series**

**Ventura Music Festival Launch and Free Concert**

**City of Ventura Public Art Program—  
Bee Cause Painting Workshop**

**Ventura County Youth Poet Laureate**

**Ventura Friends of the Library**

**University of California Master Gardeners  
Plant Sales and Classes**

**Santa Paula Future Farmers of America**

**Soroptimist International of Oxnard - STOP Human Trafficking**

**Community Memorial Hospital: Ethics  
in Healthcare**

**Art City Gallery and Studio—  
International Stonework Symposium**

**Ventura Music Festival**

**Ventura Artwalk Committee**

**Downtown Ventura Organization**

**Ventura County General Planning**

**Museum Alliance of Ventura County**

**Citrus Label Society**

*Major funding for Museum programs and exhibits is made possible in part by the City of San Buenaventura and the County of Ventura.*





# A Living Treasure, a Community Legacy

## Barbara Barnard Smith

Barbara Barnard Smith's family heritage and philanthropy are synonymous with the heart, soul and history of Ventura County. Barbara Barnard Smith is the great-granddaughter of William Dewey Hobson, often called the Father of Ventura County. The family's home she grew up in is now Ojai's City Hall.

Growing up, Barbara's mother was an accomplished violinist and an influence on Barbara's love of music. After earning a graduate degree from the prestigious Eastman School of Music in Rochester, New York, Barbara moved to Hawaii in 1949 and initially taught Western classical music at the University of Hawai'i. Upon exposure to students of predominantly Hawaiian and Asian ancestries, she began researching and teaching ethnomusicology, and is recognized as one of the founders of this field of study. In 2000, she was celebrated by the University as a "living treasure of the Colleges of Arts and Science." Since then, among other honors, in 2008 she received the State of Hawai'i Governor's Award for Distinguished Achievement in Culture, Arts, and Humanities, in 2009 the Koizumi Fumio Prize for Ethnomusicology and in 2019 the Alfred Preis Honor for her lifetime support of the arts, and community building in Hawaii.

Barbara has been committed to the Museum of Ventura County for decades with generous support of the Museum's assets including its Research Library and Archives and the Agriculture Museum. In 1977, Barbara and her family established the Museum's Fred W. and Grace Hobson Smith Gallery, in honor of her parents. The gallery houses the George Stuart Historical Figures® collection, consisting of more than 200 miniature likenesses by internationally acclaimed artist George Stuart. In the early 1990s, Barbara led the creation of an endowment to conserve the museum's permanent Stuart collection. The statues, all one-quarter of life size, depict historical figures adorned in elaborate period costumes made of fabrics, metals and other materials that require ongoing restoration and special storage.

In February 2018, Barbara contributed \$1 million to establish the Barbara Barnard Smith Museum of Ventura County Executive Director Fund to provide permanent financial support for the Museum's executive director position. The donation marked the first major gift in the Museum's campaign to raise \$7.5 million to establish a sustainable fiscal and operating model that secures the continuation of the Museum for generations to come.

"The Museum of Ventura County is an exceptional venue for celebrating, commemorating and exploring the local lore, traditions, music and arts that make Ventura County's culture unique," Barbara said. "I encourage people to support and promote the museum's role to inspire and foster creativity, inquiry and engagement for all of our county's residents and visitors."



**Barbara has been committed to the Museum of Ventura County for decades with generous support of the Museum's assets including its Research Library and Archives and the Agriculture Museum.**



# A Legacy Gift For The Future

## EDITH HOBSON HOFFMAN SOCIETY

In 2018, the Museum renamed its Heritage Society (a planned giving society) to the Edith Hobson Hoffman Society in honor of her long legacy of philanthropy and community-minded spirit to the Museum and Ventura County. Edith Hobson Hoffman Society members have named the Museum in their will or estate plans, or have provided sustaining support with gifts to the Endowment. The generosity of these visionary leaders ensures that the Museum can continue its mission of collecting, preserving and telling the history of Ventura County for generations to come.

Lila Atkisson

Neal Barr

Robert F. and Susan Pfeiler Brown  
*In memory of Bob and Betty Pfeiler*

Suzanne Chadwick

Linda and John Edison

Gail and Bill Faulkner

James and Mary Galbraith

Nancy Gallagher

Spencer and Nancy Garrett

Nancy Hey

Index Fresh, Inc.

Pat Jump

William and Elise Kearney

Maggie H. Kildee

Eunice Manning Koch

James Lloyd-Butler  
*In memory of Cynthia M. Lloyd Butler*

Patrick Lloyd-Butler

Dorothy Loebel

Martin V. & Martha K. Smith Foundation

Brianne McGrath

Barbara S. Meister  
*In memory of Larry Meister*

John and Caroline Menne

John and Stephanie Orr

Tom and Karen Pecht

Laura Peck

Andrea and Hank Pfister  
*In memory of Edith Hobson Hoffman*

The Allan M. Pinkerton Family

Mary Anne Estes Ritchie

Tommy Slater

Barbara Barnard Smith

Matthew and Nancy South

Martha A. Spriggs

Dorcas H. Thille  
*In honor of the Hardison Kimball  
Thille Families*

Thomas and Esther Wachtell

Janice Petit Willis

### In grateful memory:

Eleanor Armstead

Howard Boroughs

Lincoln and Terry Cryne

E. Louise Gooding

Isabel Levitt

Dorothy J. Novatt

William L. Orcutt

Miriam Schwab

Edith Wald

Ilse Weile

Helen M. Yunker



Edith Hobson Hoffman Society members receive special recognition and are invited to an exclusive annual appreciation event. If you have included the Museum of Ventura County in your will or estate plans, please let us know so that we can give you proper recognition. To explore planned giving options, please contact the Development Department at 805.653.0323 ext. 303.



# We gratefully acknowledge the following individuals, foundations, organizations and businesses for their generous financial and in-kind support of the Museum of Ventura County.

## \$250,000+

Estate of Miriam Schwab  
Tom and Karen Pecht  
Dr. Barbara Barnard Smith

## \$100,000 TO \$249,000

City of San Buenaventura  
County of Ventura  
Thomas and Esther Wachtell

## \$25,000 TO \$99,999

Charles D. and Mary A. Bauer Foundation  
Nancy and Spencer Garrett  
John Hammer  
Leavens Ranches LLC  
Martin V. and Martha K. Smith Foundation  
Barbara S. Meister  
Mr. & Mrs. John J. Menne  
Allan M. Pinkerton Family  
Rebecca and Jeffrey P. Smith  
Dorcas H. Thille  
Janice Turner  
Janice Petit Willis

## \$10,000 TO \$24,999

Eleanor S. Armstead (D)  
Lila Atkisson  
Baltoro Trust  
Ellen M. Brokaw  
Conrad N. Hilton Foundation  
Gail and Bill Faulkner  
Fred and Susan Ferro  
Finch Family Foundation  
Toni Gardiner  
Gene Haas Foundation  
Rod Gilbert  
Index Fresh, Inc.  
William and Elise Kearney (BOD)  
Carol E. Lamb  
Leslie Leavens (BOD)  
Limoneira Company  
Patrick Lloyd-Butler  
Oro del Norte LLC  
John and Stephanie Orr  
Patagonia  
James and Maureen Scanlon (BOD)  
Mary Leavens Schwabauer  
Smith-Hobson Foundation  
William A. & Cynthia D. Fairburn Memorial Fund

## \$5,000 TO \$9,999

Bank of America Matching Gifts Program  
James Birkenshaw  
California Resources Corporation LLC  
Betsy Chess (BOD)  
Lincoln and Terry Cryne (D)  
Farm Credit West  
James and Mary Galbraith

Nancy Gallagher  
James and Mary Harrison  
Hoffman/Haley Marina Village LLC  
Jordan Laby  
James Lloyd-Butler  
Gayley and John McConica  
Brienne McGrath  
Gretchen and Marshall Milligan  
Montecito Bank & Trust  
Andrea Pfister  
Rabobank  
Dr. Charles Rennie and Dr. Teresa Nakashima  
TOLD Corporation  
Topa Topa Flywheelers  
Barbara Topping

## \$1,000 TO \$4,999

Mimi and Philip Allin  
Edward and Jill Banman  
Arthur Bliss and Toy White  
Elena Brokaw and Pat Miller  
Mr. & Mrs. Robert F. Brown  
Peter and Gabriella Busch  
Nina Marie Butler  
California Fertilizer Foundation  
Patti Channer  
Christopher P. Fowkes Memorial Fund  
Todd Collart  
Al and Freddie Contarino  
Mr. & Mrs. Milton F. Daily  
Jack Dickenson  
DJ's California Catering  
Jayme Dwyer  
E.C. Nichols LLC  
Katherine and Michael Enright  
Family of Helen Pidduck  
John and Diane Flynn  
Jim Friedman  
Jurgen and Gerry Gramckow  
John and Elizabeth Grether  
Carol and Logan Hardison  
James Stephen Hurst  
Linda Kimbrough  
Saria Kraft  
John and Carol Lamb  
Lloyd Properties  
Dorothy Loeb  
Al and Petra Lowe (BOD)  
James Maddux  
Craig and Nancy Marcus  
Larry and Linda Matheney  
Edward McCombs  
Kate McLean and Steve Stone (BOD)  
Jane Meyer  
Judith Munzig  
J. Roger Myers and Katherine Stone  
Vivian and Tom Nelson  
Bernard Novatt  
Maria B. Ortiz  
James and Linda Peddie  
Susan Petty  
Carolyn Pidduck and Marc Soltan  
Jane Pidduck

Richard Pidduck  
Bruno and Victoria Pozzi  
Elaine and Larry Rasmussen  
David Schwabauer and Michael McMahan  
Scott Family Foundation  
Mike Sedell (BOD)  
Mike Silacci  
Denise and Jim Sindelar  
Pam and Samuel Small  
Spriggs and Company, Inc.  
Strata Holdings LP  
The Sence Foundation  
Judith Triem and Mitch Stone  
Theresa Tyndall  
Craig and Sara Jane Underwood  
Linda Velthoen  
Wagner Financial  
Drs. Roz Warner and Michael Hogan  
Keith Westcott  
Heidi and Mike Whitcomb  
Gary and Cheryl Wilde  
Miriam Wille  
Taylor and Tom Wolfe  
Hiroko Yoshimoto  
Whitten and Sally Yount  
Peter Zierhut (BOD)

## \$500 TO \$999

Arthur Nichols Ranch  
Allan and Jyl Atmore  
David Bayer  
Mary Bergen  
Bernard and Eugenia Bernacchi  
John and Kai Blanchard  
Marni Brook  
Gerry Browning  
Allen and Marilyn Camp  
Faye Campbell  
Paul Carlson and Shawn Hanson  
Don and Bonnie Carlton  
Claire Carty  
Joseph and Valerie Chrisman  
Mary Ann Cohen  
David Cook and Reta Tyree  
Ann Cooluris  
Dave and Jeanette Curci  
Ann Donlon  
Marcia Donlon  
Nan Drake  
Leslie and Tom Dwyer  
E.J. Harrison & Sons Inc  
Ferguson, Case, Orr, Paterson LLP  
David and Faith Friedlander  
Howard Gabbert  
John and Margaret Given  
Ross Goodman and Ilse Lang  
Linda Hadlen  
Mary Lou and Stephen Harbison  
Carolyn Hertel  
Hinricher, Douglas & Porter LLP  
James and Teresa Holden  
Nancy and Wayne Huff  
Robert Jacobi  
Thomas and Barbara Laubacher  
Geri Levine-Loe

Lindsay and Company LLP  
Main Course California LLC  
Ruth Maulhardt  
Nancy Mayerson  
Laura McAvoy and Sol Chooljian  
Roz McGrath  
Michael and Jeanne Milligan  
James and Linda Morrison  
James Naumann  
Gary and Vicki Nichols  
Norman Dowler LLP  
Alex Olsen  
Banks and Ben Pecht  
Laura Peck  
Bob and Norma Privitt  
Bill and Jane Rader  
Rancho Largo LLC  
Roxie Ray  
Rose Law Offices  
Richard and Jane Rush (BOD)  
Dietrich and Valerie Schmidt  
Ronald Stovitz and Danell Zeavin  
Richard and Kristin Taylor  
Tony and Anne Thacher  
Unitarian Universalist Church of Ventura  
Ventura County Credit Union  
Ventura Downtown Lions Club

## \$250 TO \$499

Dr. Moustapha and Joanie Abou-Samra  
Dixie Adeniran  
Richard and Bonnie Atmore  
Neal Barr  
Michael Binsley  
David and Alexis Boeshaar  
Robert Bothamley  
John and Cherie Brant  
Robert Brooks  
Barbara Brough  
Busy Bee Cafe  
James Capito  
Tom and Patty Carmody  
James Chrismen  
Harriet Clune and Richard Stewart  
Carol Cole  
Amelia Compton  
Richard and Noel Daily  
Philip and Marcia Drescher  
Dullam Nursery  
Edward L. Lascher Fund  
James and Kris Finch  
Bryan Fisch and Carrie Rothstein-Fisch  
Anthony and Edie Fowkes  
Richard and Nancy Francis  
Paul Friedrich  
Margaret Garcia  
Nancy Grass and Deirdre Weaver  
Linda Greene  
Wylie and Janet Greig  
Grether Farming Company Inc.  
Virginia Gunderson  
Thomas Hardison  
Jim and Tish Harris  
Heritage Valley Tourism Bureau  
Bill and Pam Hicks  
Barbara and Larry Hilburn



Clyde and Lynne Hofflund  
 Harvard and Helen Horiuchi  
 Debbie Jackson  
 Margaret Kimball and William McPherson  
 Eunice Manning Koch  
 Lake Casitas Boat Rentals  
 Judy Lambert and Julie Empson  
 J. Link and Sally Leavens  
 Dan Long and Karen Flock  
 James and Cynthia Ludwig  
 Rosemarie Magness  
 Eileen Maher  
 Marcia and Brad Marcus  
 Lawrence Markworth and Susan Pollack  
 Kim Martindale  
 Paul and Grace Martinez  
 Rosena McConica  
 Mary McGrath  
 Walter McKinny  
 Ernie and Suzanne Melonas  
 W.C. Milligan  
 Donald Mills  
 James Moule  
 Frank and Susan Naumann  
 Margaret November  
 Juergen and Helga Ohrt  
 Ojai Oil Company  
 Thomas and Mary Olson  
 Robert Olszewski  
 Nicholas Orr  
 Peter and Rebecca Percy  
 Susan Peterson  
 Michael Putman and Marge Karmey  
 Richard Quint  
 Rancho Canada Larga  
 Michael Rohde  
 Barbara Rose  
 Bonnie Rose  
 Nils and Beverly Rueckert  
 Santa Paula Latino Town Hall  
 Jaime and Toni Santana  
 Stephen Schafer  
 Steve and Shirley Simms  
 John and Debbie Simpson  
 Kathleen Sisson  
 Marta Viktoria Smith  
 Lee Souleles  
 Mary Stewart  
 John Taft  
 Dr. and Mrs. John Thacher  
 Robert and Marilyn Thompson  
 Adela Trainor  
 Patty and Michael Velthoen  
 Adele Stuebling Walsh  
 Dr. Edward and Jane Waters  
 Linda White  
 Douglas Wied  
 Sylvia and Duane Wikholm  
 Jack Wood  
 Dr. Doug and Caryn Woodburn

## **\$100 TO \$249**

Susan Adamich  
 AG RX  
 Connie Aikens  
 Wendell and Denise Allen  
 Judi Allen  
 Brenda Allison-Hutchinson  
 John Allred and Michele Willer-Allred  
 Marta Alvarez  
 Victoria Ammons  
 Arne Donald Anderson  
 Sue Andrews  
 Catherine Arnold  
 Everard and Brooke Ashworth

Randall and Joanna Axell  
 Mary Triplett Ayers  
 Cornelia Baer  
 Yissel Barajas (BOD)  
 Gary and Nancy Barber  
 Penelope Barnds  
 Regina Barnes  
 Steven and Denice Barr  
 Barbara Barraza and Alberto Ordonez  
 Marilyn and Robert Batelaan  
 Illona Battaglia Aguayo  
 Barbara Beach  
 Katherine Beattie  
 Vanessa and Jim Bechtel  
 Calvin and Gail Beeker  
 John and Kathleen Behne  
 Steve Bennett  
 Carolyn Berenson  
 Ken and Sue Birdsall  
 Dr. Clyde and Jane Blackman  
 Barry and Judy Blades  
 John and Nancy Borchard  
 Caryn and Charlie Bosson  
 Diane Bovee  
 William and Joanne Bowie  
 Bob and Mary Braitman  
 Grace Emery Brandt  
 Dr. Berkeley Brandt and Sharon Heintz  
 Helen Brant  
 Orval and Ernestina Buck  
 Elizabeth Bugg  
 Donna Burger  
 Sonya Burke  
 Lamar Bushnell  
 Jim and Linda Bushong  
 Michelle and Jim Butterbaugh  
 Rachel Cahill  
 James and Christine Caldwell  
 Jesus and Virginia Camarillo  
 Peter Cannon  
 Joyce Cantrell and Caryl Cantrell  
 Bernard and Madelaine Carteron  
 Charles and Maryrose Caspary  
 Elaine Cavaletto  
 Suzanne Chadwick  
 Janice Chan  
 Robert and Paula Chianese  
 William Chilcutt  
 Dr. David Chernof and  
 Chris Provenzano-Chernof  
 Philip and Laura Clarke  
 Kevin Clerici and Jessica Oddi  
 Tom and Cara Cohen  
 David and Tina Comden  
 Roberta and Dan Cordell  
 Charles Covarrubias  
 Dennis and Sybil Coyner  
 Crop Production Services  
 Daniel and Janet Crotty  
 Cultural Arts Tours & WS  
 Melissa and Michael Curtin  
 Dr. Gregg and Margaret Cutler  
 Donald and Donna Dames  
 Ivor Davis  
 Constance Davis  
 Catherine De La Torre  
 Tom and Connie Deardorff  
 Lance and Katie Deutschman  
 Richard and Ellen Devericks  
 Allison Dobbin

Docent Council of the  
 Museum of Ventura County  
 Robert and Linda Donovan  
 Jim and Elaine Donovan  
 Patti Douglas  
 Lee and Cheryl Draughon  
 Barbara Dupree  
 Karen Duran  
 Pamela Duty  
 Marcia Edwards  
 Edward and Frances Elson  
 Linda England  
 Lois and Robert Erburu  
 Tasia Erickson  
 Richard Esparza  
 Joann Evans  
 Bill and Karen Evenden  
 Peter and Patricia Fallini  
 Karen and Glen Farr  
 Neva Felino  
 Beryl Feller  
 Michelle Fieler  
 Karen Marie Flock  
 Sandra Foraker  
 Naomi Claypool Fowler  
 Dr. Stanley and Heidi Frochtzwajg  
 Bruce and Janice Fuhrman  
 Carol and David Fujita  
 Jarrel Fuller  
 Richard and Mary Gallagher  
 Liz and Art Gaspar  
 Bettina Gedney  
 Joan Gendreau and William Herbert  
 Edward Gibbs  
 Sarah and George Gilmour  
 John and Judi Gould  
 Donald and Virginia Grainger  
 Lester Gray  
 Carol Greeby  
 Donald and Sandra Greenberg  
 Larry and Deonne Greene  
 Annie Hankinson-Tovey  
 Barbara Harison  
 Barbara Harvey  
 Cynthia and Tom Hashbarger  
 Luisa Haskell  
 Linda and Richard Hatcher  
 Marilyn Hatfield  
 Annette Heck  
 Craig and Denise Held  
 Mary Alice Henderson  
 Dave and Kathy Henri  
 Valerie Herzig  
 John and Laurel Hewson  
 Jessica Hibbs  
 Dr. John Hill  
 Kay Hill  
 Mark Hill  
 Dr. and Mrs. Stephen  
 and Carolyn Hiller  
 Craig and Judy Hodson  
 Richard and Alice Holst  
 Mary Sue Horgan  
 Dennis Horwitz  
 Mr. Philip Horowitz  
 Charlotte Hoyt  
 Carol Hughes  
 Carrie Hughes  
 Jeanne Hunt  
 Carolyn Huntsinger

Donald and Carol Hurley  
 Ann Huston  
 Jill Ireland  
 Maryanne Irving  
 Ellen Israel  
 Peter and Amy Jamieson  
 Si and Karen Jenkins  
 N. Jeanette Jennett  
 John Johnson  
 Cindy and Rick Jones  
 Kriste Josephson  
 Dennis John Jurcak  
 Jennifer Kagawa  
 Joanne Kaplan  
 Jerry and Susan Kaufman  
 Josh and Mary Kay Kaufman  
 Richard and Donna Keister  
 Nancy Kellogg  
 Taras and Lily Kiceniuk  
 Maggie Kildee  
 Anne King  
 Alan Kirschbaum  
 Rose Ann Klope  
 Kona Ice  
 James Koss  
 Chris Kozadd  
 John Krist  
 Allan Kurihara  
 Ed and Susan Lacey  
 Lucien Lacour and Carol Howe  
 Alan and Nenifa Langville  
 Donald Latham  
 Kurt Lehnhardt  
 Leisure Village Womens Club  
 Craig and Karen Lewis  
 Lightning Ridge  
 Carol Lindberg  
 Larry and Janet Lindgren  
 David Loe and Tisha Longoria  
 Drs. Geoff and Nancy Loman  
 Ann Lombard  
 Joe Lombardo  
 Dr. Dennis and Jeanette Longwill  
 Nelly and Laiying Mac  
 Samantha Marquardt  
 Janet Martin  
 Rev. John Martin  
 Judith Masterson  
 Maulhardt Properties Company  
 Sharon McAlexander  
 Bob and Della McCord  
 Sharon McGahan  
 Phil and Joanne McGrath  
 Megan McKiernan  
 Jonell McLain  
 Tom and Gerri McMillin  
 Neale and Sue McNutt  
 Michael and Linda McTigue  
 Trish Melcher  
 Michael and Loretta Merewether  
 Jamina Metcalf  
 Jay and Jean Midgley  
 David and Carole Minkin  
 Mr. James Monahan  
 Sally and Tom Mueller  
 Burton and Irene Munger  
 National Society of the Daughters  
 of American Revolution  
 Mary Naumann  
 Nancy Newman

*Every effort has been made to ensure the accuracy of our donor information.  
 If we have inadvertently made an error or omission, please contact the Development  
 Office at (805)653-0323 ext. 330 with any concerns or corrections.*



Joanna Bard Newton  
 John and Carolynn Nicholson  
 William and Patricia Niederst  
 Michelle Nosco  
 Merle and Pat Oberg  
 Dr. Rose-Lise Obetz  
 Annette Okamura  
 Jeanne-Marie Olmo  
 Warren and Gail Paap  
 Dr. Bill and Francie Parr  
 Jacqueline Pease-Waters  
 Jone Pence  
 Carolyn Pendery  
 Catherine Penprase  
 Arturo and Amada Perez  
 Lynne Peterson  
 Arlene Pinkerton  
 Bill and Michelle Piotrowski  
 Pleasant Valley Historical Society  
 Scott and Ginny Powell  
 Rick Power  
 Jeanne Pruitt  
 Elizabeth and Kent Quinn  
 William and Linda Ramelli  
 Virginia Randolph  
 Hank and Eleanor Rasnow  
 George and Norma Reber  
 Pat and Susana Reeder  
 Galina Richardson  
 Colleen Robertson  
 Cliff Rodrigues  
 Don Rodrigues  
 Steve and Linda Roslansky  
 Christina Ruhland  
 Joseph Rund and Alfonso Reta  
 Mary Lou Rusnik  
 Zaki and Ann Salahuddin  
 Jon and Diana Salberg  
 George and Lois Sandall  
 Saticoy Poinsettia Club  
 Karen Savitt  
 Tim Schiffer  
 Howard Schneider  
 Dr.Philip and Mildred Schofield  
 Lawrence Schwartz  
 Richard and Yvonne Seabold  
 Servpro  
 Louise Sharp  
 Sherman Library & Gardens  
 Michael and Mary Shore  
 Eco and Dirk Shumaker  
 Elizabeth Simpson  
 Marianne Slaughter and Dee Press  
 Sarah Smedley  
 Mr. Gregory and Shelley Smith  
 Michael Smith  
 Mike Smith  
 Robert and Kathryn Soares  
 Andrew Soter  
 Dr. William S. Spellman  
 Chris and Adrienne Stephens  
 Loren and Joanne Stone  
 Judith Streamer  
 Natalie Swan  
 Eric and Lori Swanson  
 Alice Sweetland  
 Susan and Rob Talmadge  
 Kate Taylor  
 Carolyn and Dominic Tedesco  
 Richard and Louie Tejeda  
 Myra Toth  
 Margaret Travers  
 Meredith Treadwell  
 Tyler and Patricia Tugwell

Umina Brothers Inc  
 Jose Valencia  
 Susan Van Abel and Eric Oltmann  
 Marilyn Schmitt Viles  
 Donald Walker  
 Michael Ward  
 Robert Warnagieris  
 Jeanne Warren  
 Charlie Watling  
 Yvonne Westervelt  
 Joyce Wiechert  
 Pat Wiker  
 Dr.Michael and Evelyn Williams  
 Gary and Ann Wolfe  
 John and Sharon Woolley  
 Sueanne Ying  
 Gerald and Cynthia Yoshitomi  
 David Young and Jill Forman  
 Francois and Mary Zugmeyer  
 Wilhelmus Zwinkels

## UNDER \$100

Kathy Abbott-Mayer  
 James and Joanne Abing  
 George H.J. Abrams and Martha Symes-Abrams  
 Neal Abramson  
 Jane Advani  
 Amazon Smile Foundation  
 Colleen Andersen  
 Kerri Anderson  
 Betty Anear  
 Mychal Arata  
 James Arellano  
 Diane Atchley  
 Libby Atwater  
 William and Carol Aulich  
 William Austin  
 Lois Bach  
 Marie Baez  
 Janet Bagby  
 Annette Baietti  
 Steven Bailey  
 Sandi Banks  
 Eleanor and Michael Banner  
 Frank Barajas  
 Marion Baranowski  
 Richard Barbar  
 Don and Debbie Barker  
 Howard Barlow  
 Joan and Mike Barminski  
 Christine Basua  
 Penny Batt  
 Mary Jane and Richard Bauleke  
 Barbara Bean  
 Ben and Megan Beatie  
 Ellen Becker  
 Paul Belgum  
 Matt Bello  
 Bancroft M. Benner  
 Militza Bergamo  
 George and Joy Berger  
 Irving and Arlene Bergman  
 Dr. Raoul Berke  
 Jacqueline Bermudez  
 Nancy Berry  
 Mary Ann Biewener  
 Lerie Bjornstedt (D)  
 Norman Blacher  
 Jeanne Black  
 Janet and Jim Black  
 Laura Blackorby  
 Lynda Blue  
 Sue Bolton  
 John Borneman and Linda O'Neill

Linda Boross  
 Bonnie Bowen  
 Donald Bowles  
 Shannon Boyd  
 Diana Boydston  
 Jean Boyer  
 Alan Bozarth  
 Kathleen Briggs  
 Karin Brinkley  
 Ron Broschart  
 Jerry and Gail Brown  
 Karen Brown  
 Mike Brucker  
 Dorothy Brunkan  
 Vella Buchanan  
 Rick and Carol Bury  
 Cathy Butter and Tamara Varney  
 Fred and Judy Bysshe  
 Ernest and Rosalee Calvillo  
 Douglas and Christine Campbell  
 Mike Capesius  
 Leticia Carabajal  
 Joe Cardella  
 Glenda Cardona  
 Linda Carson  
 Van and Vicki Carver  
 Constance Casavan  
 Carol Celic  
 Gabriel Chacon  
 Marisela Chavez  
 Sue Chenoweth  
 Amy Cherot  
 Karen Cherry  
 Jeffrey Chester  
 John Cinatl  
 Erwin Clahassey  
 Margaret and Delbert Clayton  
 Jill Coffan  
 Alana Coghlan  
 Charles and Eloise Cohen  
 Charles Cole  
 Katherine and Terry Collins  
 Michael Colton  
 Dale Condra and Carolyn Briggs  
 Roger Conrad  
 Kathleen Contreras  
 Colleen Conway  
 Joan Cook  
 Molly Corbett  
 Maria Corella  
 Doris Cowart  
 Jean Coyne  
 Jim and Donna Cruz  
 Wesley Cullins  
 David Culton  
 Beverly Cunningham  
 Sharon Cunningham  
 Katherine Curtin  
 Nicole D'Amore  
 Jessica Dalton  
 Wayne and Barbara Davey  
 Gayle David  
 Gary and Bonnie Davis  
 Jackie Davis  
 Curt and Carolyn Davison  
 Carol and Larry Dawes  
 Deborah Dawson  
 Adriana De Haan  
 Marsha De la O  
 Rich and Ginny Deppe  
 Diane Dibble  
 Mary DiCesare  
 Ron and Barbara D'Incau  
 Thomas Dodds  
 Patricia Doerner

Mary Dolliver  
 Joanna Dovalis  
 Beverly Drapeau  
 Karen and Robert Draper  
 Carol Drescher  
 Sabrina Drill  
 Robert Dudley  
 Judy and Dan Dugan  
 Dennis and Jane Dwire  
 Marisue Eastlake  
 Dr. Linda and John Edison  
 Elaine Edwards  
 Lauraine Effress  
 Cherie and Tom Egbert  
 Joan and Bob Egbert  
 John Eggler  
 Myrtis Ellis  
 Patricia Ellis  
 Florence Elwell and Diane Martinez  
 Deloris Emerson  
 LaVaughn Engblom  
 Charles and Cheryl Engel  
 Georgianna Erskine  
 Nancy Escher  
 Angel and Tila Estrada  
 Valerie Estvan  
 Barbara Evans  
 Todd Everett  
 Ben Faber  
 Donna Fairfield  
 Donna and Mitchell Fairfield  
 Margaret Fall  
 Bill and Kate Faulkner  
 Richard and Marcia Fausset  
 Donald Fay  
 John Fay  
 Diane Federle  
 Constance Ferguson  
 Virginia and Randolph Ferro  
 Joan Fiedler  
 Joanne Fields  
 Rose Fields  
 Marge Figurski  
 Linda Fisher  
 Shirley Fitzgerald  
 Sarah Flesher  
 Geraldine Fletcher  
 Kevin and Stephanie Flint  
 James and Katie Flores  
 Mary Follenweider  
 Shelly Foote  
 Frank Foster and Julie Hedrick  
 Teri Foster and Harmony Rodriguez  
 Mark Fox  
 Kathy and Jim Franklin  
 Gwendolyn Fraser  
 Helen Fredell  
 Lois Freeman-Fox  
 Aimee French  
 Cris and Dorothy Fulwider  
 Lucia Galgano  
 Colleen Gallo  
 Sonia Garcia Ramirez  
 Ilene and Howard Gavenman  
 Peter and Wendy Gayner  
 Lynn Geller  
 Betsy George  
 Susan Gerrard  
 Garrett Gerson  
 Kay Giles and Michael Mariani  
 Judi Gill  
 Leyland Gillibrand  
 Lynda Girtsman  
 Cary Glenn  
 Richard Glenn  
 Richard Goad



David and Jessica Goldstein	James Kirkpatrick	Robert Milazzo and Mary Stanistreet	Roberta Pittman
Eleanor Gordillo	Lynne and Robert Klamser	Sherwood Milleman	Donna Pitzler
Kerry Gough	Noel and Pamela Klebaum	Gerald and Ana Miller	Paula Poll
Judi Gould	Betty Knowles	Irene Miller	Maria Polonsky
Duane Gragg	Mary and Peter Kobashikawa	Judy Miller	Drucilla Porter
George Graham	Elyse Kutz	Patricia Miller	Portuguese Fraternal Society of America
Donna Granata	Marvin Kvit	Sheldon and Beth Miller	Paul and Pauline Powers
Monica Gray	Robin Lamar	Shirley Milligan	Roanna Prell
Claire Greenberg	Jeffrey Lambert	Sharon Mitchell	Sandra Quick
Julie Gregg	Susanne Lammot, MD	Rommel Molina and Jennifer L. Chang	Moises Ramirez
Judy Greycloud and Marc Payne	Jan Langer	Rosemary Molloy	Pascual and Sylvia Ramirez
Carol Griffin	Wendy Lascher	Ines Monguio	Margaret Reifer
Harald Hahn	Sheila and Herbert Lazarus	Frances Monroe and Bruce Hardy	Robert and Norma Rich
Jack and Beverly Halpin	Georgeanne Lees	Curt and Jane Montague	Dick and Martha Richardson
Douglas Halter and Randy Encinas	Fredda Leiter	Lelia Montemorra	Rebecca Riley
Patricia Halverson-Henas	Chris Leonard and Carola Buhay	Suzanne Montgomery	George Roberts
Donna Hamer	Yuko Leong	Dr. Diane Moore and Lyn Utsunomiya	Sabrena Rodriguez and Andrei Bobrow
Jennie Hansen	Christine Leong	Judy Moore	Helen Rolls
Linda Haque	Irene and Howard Level	Lisa Moore	Hope Rosenfeld
William and Diane Harkins	Chase Lichtenstein	Moses Mora and Ana Becerra	Dr. Anne Roundy-Harter
Lennie Harris	Pat Lindley	Rita and Patrick Moran	Ursula Rowe
Margaret Harris	Laura Lindsay	Lorenzo and Connie Moraza	Richard Rudman
Ruth Hartman	Pamela Lindsay	Ellen Morgan	Bryan Rupe
David Hassler	Timothy and Kathryn Linman	Theodora and Jerrold Morris	Beverly Russell
Judee Hauer	Victoria Lloyd	Kathleen Morris	Judith Russo
Patricia Havens	John and Dee Lockwood	Lori Morris	Dawn Russum
Pamela Hazard	Joyce Lombard	Claudia Morrison	Mary Rydberg
Angela Heald	Tracy Long	John Morrison	Judith Salazar
Kiala Heavyrunner	Robert Lopez	Ted and Dale Muegenburg	Glenda and Bill Sampson
Angie Hecht	Karen Lorenzen	Jeanette Mueller	Luis and Lori Sanchez
Hedrick Properties, Inc.	Pat Lowthorp	Shaun Mueller	Sandra Sanders
James Heller	Rockwood Ludes	Amy Mukhopadhyay	Angela Sarafian
Jennifer Herbinson and Michael Bland	Andrew Ludlum	Vivian and Charles Mullett	Robert and Alison Sawyer
Barbara Hill	Paul Lupo	Michael Musser and Cindy Mulhollen	Camille Schaezel
Robert Hindle	Sherry Lyons	Brenda Nakagawa	David and Merna Schmitt
Thomas and Genevieve Hinkle	Madeleine MacHarg	John and Jessica Nava	David and Yvonne Scholle
Linda Hitt	C.B. Magallanes	William and Carolyn Neel	Bruce and Joyce Schoppe
Kathleen Hobson	Robert Mahan	Barry and Elsa Neilsen	Carl and Anna Schorsch
Mike and Annie Hollins	Patricia Maki	John Nichols	Alan and Jean Scott
Kathleen Holmgren	Katrina Maksimuk	Kamyar Nouri	Don and Mary Scott
Stella Honeymoon	Patrick and Heidi Manning	William and Linda Nugent	Gary Seacord
Michael and Linda Hoover	Lawrence Manson and Delia Gorey	Marietta O'Farrell	Nicole Sebring
Mavis Horn	Brad Marcus	Jeff Ohlfs	Edward and Linda Selby
Lisa Hornbaker	Steve Marella	Lynne Okun	Terry Shain
Amy Hudson	Carol Marsh	Leon Older	Susan Shamroy
Camille Hunter	Jo Marsh	Michael and Elizabeth Olivas	Shirley Shanahan
Nancy Huntsinger	Jerry Martin	Gerald and Joan Olsen	Shirley Shannon
Thomas Hutchinson	Betty and Al Martinez	Marjorie Olson	Perry and Jody Shapiro
Eric Hvolboll	Linda Martinez	Lee and Donna O'Neil	Tom and Judy Shaw
John and Roberta Hydar	Rosemary Martino	Helga Ono	George and Sondra Short
Zella and Hernan Ibanez	Steve Mason	Joan O'Reilly	Madeleine Sifantus
Rosemary Icardo	Patricia Masterson	Cecilia Ortiz	Tom and Cindy Silva
Stephanie Imhoff	Frank and Charaline Maxim	Heather Parks	Robert and JoAnne Simmons
Tony Jankowski	Emma Mayer	Susan Part	Nancy and Art Simpson
Tammy Jensen	Lois McCampbell	Wendy Pazen	Cynder Sinclair
Gabriela Jimenez	Mr. & Mrs. Randy McCaslin	John Peltó	Kathleen Smith
Stanley and Judith Johnson	Pat McCormick	Monica Pereira	Mariana Smith
Helen Johnson and Michael Harrison	Sally McCormick	Michael Peterson	Robert and Ellen Smith
Joanne Johnson	Thomas and Janice McCormick	Linda Peterson	Robert and Frances Smith
Lynn Johnson	Yolanda McCune	David Petit	Regan Sobaje-Pierce
Gail Johnston	Joanne McDonald	Toby Petty	Steve and Billie Sommars
Thomas and Rose Ann Jones	Suzanne McGee	Mary Pfeiler	Diana Sparagna
Bruce and Doreen Jones	Anita McLaughlin	Dorothea Phelan	Carol Spector
Joanne Julian	Nancy McMillan	Ann Phelps	Mary Lee Spencer
Kathy Julian	Carol McMullin	Betty Phillips	Bill Spicer and Lynda Gruber
Susan and Dan Kaufman	Harriet McNamara	Gary and Jean Phillips	Jane Spiller
John Kearney	Leslie McQuaide	Gail Pidduck	Charles and Linda Spink
Ellen Kearns	Beth Medina	Dina Pielat	Johanna and Patrick Spinks
Richard and Elaine Keller	Mary Meeker	Elliot and Zachary Pierce	Carol Spinner and Charlene Digman
Michael and Linda Kelly	Kenneth and Lynn Merideth	Don and Jane Pinkerton	Martha Spriggs
Janet Kessler	James Merrill	Steve Pipitone	Patrick and Suzanne Squires
Ann Kidson	Cathy Metelak		Sidsel Staal
Jamie King	Luke Metz		John Stauffer
	Vera Mijoilic		Beth and Garry Steele
	Tsvein Mikkelsen		



Lori Steinhauer  
James Stevens  
Karilyn Steward  
Robert Stewart  
Siegfried and Cheryl Storz  
Virginia Stout  
John Stover and Amber Landis-Stover  
Harrison Stroud  
Michael Stump  
Jeri and Bill Sutherland  
Renee Sutton  
Sandra and Paul Swanson  
Betty Swift  
Melvyn and Judith Swope  
Linda and Schuyler Sylvers  
Michael Szymczak  
Connie Taft  
Ben Tapia  
Michael Tapia  
Cynthia Taylor  
Arline Tepper-Trister  
Deya Terrafranca  
Greg and Debra Thayer  
Anne and Peter Thille  
Dorothy Thomassin  
Kathy Thomson  
Michael and Stephanie Tiffany  
Jo Anne Tipps  
Bob & Kathie Tobias  
Wanda Todd and Family  
Cassandra Tondro  
Marian Totheroh  
Terrence and Karen Towner  
Mary Travis  
Amy Trejo  
Caroline Tupper  
Donna Turner  
Thomas and Kathleen Turner  
Elaine Unzicker  
Steve Vacca  
Robert Valles  
Steve Van Denburgh  
Carole Van Orsdol  
Noel Van Slyke  
Ives Vanoni  
Ray Vargas  
Roberto Vargas  
Mary Volpe  
Mary Vomund  
Diane Von Heyneman  
Thomas and Jane Vujovich  
Roger and Kathy Wachtell  
Richard Wakefield  
Katherine Warner and Pete Dibble  
Robert Warner and Isabel Downs  
Maggie Watson  
Timothy and Leslie Wawrzaniak  
Virginia Weber  
Rauleen and Tom Weckworth  
Jo Ann Wedding  
Marie Weed  
Paula and Marvin Wegner  
John Weigle  
David and Tina Weinstein  
Irving and Natalie Weinstein  
Robert and Sheila Wenzel  
Patricia West  
Susan Westbrook  
Gary Wetzel and Shirley D. Vivion  
Estrella Whaley  
Dotty Wheeler  
Richard Wheelock  
Elynor Whitaker  
Aria White

Eliane and Rick White  
Teri White  
Connie Wiens  
Kathryn Wilbur  
Shelah Wilgus  
Linda Wilkinson  
Ann Willard-Bevans  
Mel and Danielle Willis  
Teri Willison  
Kelly Wilmer  
Maureen and Brett Wilson  
Rikke Wilson  
John Wingate  
Montgomery and Maio Winkler  
Margaret Pat Wise  
Ed and Gail Wohlenberg  
Cheri Wolfe  
Larry and Elizabeth Wolfe  
Sandra Wolfe  
Bill Wong  
Jack Wood  
James and Alberta Word  
Marie Wren  
Leslie and Carl Wright  
Jeff Wyrick  
Jessie Yalinkatian  
Casha Yellin  
Russell and Paula Yermasek  
Jean Yeto  
Helen Yunker (D)  
Zeke and Irma Zahid  
Mary and Edmund Zanolini  
Wade Zimmerman  
Valerie Zwirn

## IN-KIND

1927 Barbershop and Shave Parlor  
Agromin Premium Soil Products  
Mimi Allin  
Ash Street North Salon  
B. On Main  
Fast Signs  
Banzai Marina  
Barrelhouse 101  
Betty Belts  
Birkenstock Footprints of Ventura  
Buenaventura Art Association  
Cafe Fiore  
Cafe Zack  
Green Thumb International  
Linda Haque  
Law Office of Martin J. Trupiano  
LightGabler LLP  
Little Birdy Lane  
Marie Callendar's Restaurant  
& Bakery  
Namba Performing Arts Space  
Ojai Ridge Vineyard and Winery  
Oxnard Performing Arts Center  
Passion Flowers  
Pete's Breakfast House  
Rabalais Bistro  
Rêves de Sabine  
Rubicon Theatre Company  
Sandbox Coffeehouse  
Seasons Catering  
Snapper Jack's Taco Shack  
Sub Zero Ice Cream and Yogurt  
Treeco Inc.  
Ventura Children's Dental Group  
Ventura Coast Brewing Company  
Vons  
We Olive  
Tammy Webster  
Yolanda's Mexican Café

The Museum is grateful  
to the City and County  
of Ventura for their  
support of this historic  
and cultural community  
institution. Our continued  
success depends upon  
these agencies, as well  
as the generosity and  
dedication of our  
volunteers and donors.





# Tribute Donations

The following individuals chose to celebrate the legacy of friends and family in 2018 through a gift of remembrance or honor in their name to the Museum of Ventura County.

## IN HONOR OF:

### Judy Bysshe

Kate McLean and Steve Stone

### Don and Bonnie Carlton's Birthdays

Michael and Linda Kelly

### Betsy Chess

Barbara Meister

### Katharine and Terry Collins

Don and Bonnie Carlton

### Tom and Lydia Hopps

Dr. Philip and Mildred Schofield

### Charles Johnson

Frank Barajas  
David Bayer  
William and Joanne Bowie  
John and Cherie Brant  
Elena Brokaw and Pat Miller  
Gerry Browning  
Linda Hadlen  
Linda and Richard Hatcher  
John Johnson  
Mary McGrath  
Kate McLean and Steve Stone  
Harriet McNamara  
Ernie and Suzanne Melonas  
National Society of the Daughters  
of American Revolution  
Stephen Schafer  
Rebecca and Jeffrey Smith  
Mary Stewart  
Alice Sweetland  
Tony and Anne Thacher  
Judith Triem and Mitch Stone  
Mary Volpe  
Michael Ward

### Elise Kearney's Birthday

Dr. Moustapha and Joanie Abou-Samra  
Vanessa and Jim Bechtel  
Elena Brokaw and Pat Miller  
Lamar Bushnell  
Michelle and Jim Butterbaugh  
James and Christine Caldwell  
Joyce Cantrell and Caryl Cantrell  
Charles and Maryrose Caspary  
Sue Chenoweth  
Joseph and Valerie Chrisman  
Margaret and Delbert Clayton  
Constance Davis  
Wayne and Barbara Davey  
Karen Duran  
E.J. Harrison & Sons Inc  
Karen and Glen Farr  
Sandra Foraker  
John and Margaret Given  
John and Judi Gould  
Carol Greeby  
Mary Lou and Stephen Harbison  
Carolyn Hertel  
Bill and Pam Hicks  
Kathleen Holmgren  
Cindy and Rick Jones  
Anne King  
Leslie Leavens

Laura McAvoy and Sol Chooljian  
Mr. & Mrs. Randy McCaslin  
Gayley and John McConica  
Kate McLean and Steve Stone  
Michael and Loretta Merewether  
Allan Pinkerton Family  
Bruno and Victoria Pozzi  
Barbara Rose  
David and Merna Schmitt  
Rebecca and Jeffrey Smith  
Richard and Kristin Taylor  
Carolyn and Dominic Tedesco  
Thomas and Esther Wachtell  
Drs. Roz Warner and Michael Hogan  
Doug and Caryn Woodburn  
John and Sharon Woolley

### Brad Marcus' Birthday

Jerry and Susan Kaufman

### John Orr's Birthday

Rebecca and Jeffrey Smith

### Anne Lenox Snodgrass

Lelia Montemorra

## IN MEMORY OF:

### Ruth Austin

Gerry Browning  
Linda Hadlen  
Sylvia and Duane Wikholm

### Alice Avedisian

Mr. & Mrs. Milton Daily, Jr.

### Vella and Leland Blackorby

Laura Blackorby

### Darrell "Bogy" Bogardus

William and Elise Kearney

### Frank Boross

Dave and Kathy Henri  
Dr. Charles Rennie and Dr. Teresa Nakashima

### Genrose Chrisman

Linda Hadlen

### Loretta DuBois

Linda Kimbrough  
Kathleen Sisson

### Andrea Teague Gabbert

Howard Gabbert II

### Doug Graham

William and Elise Kearney

### Joseph Robson Henderson

Richard Pidduck

### Fritz Huntsinger

Nancy and Wayne Huff  
William and Elise Kearney  
Stephen and Leslie Maulhardt  
John and Stephanie Orr

### Monroe Kaplan

Allan and Jyl Atmore  
Edward and Frances Elson  
Ann Huston  
Rita Moran  
Ronald Stovitz and Danell Zeavin

### Cynthia M. Lloyd-Butler

James Lloyd-Butler

### John Masterson

Rosena McConica

### Larry Meister

Barbara Meister

### Marianne Hertel Mize

Dorcas Thille

### John Chapman Morris, Jr.

Diane Bovee

### Art Morrison

James and Linda Morrison

### Dorothy J. Novatt

Bernard Novatt

### Dr. Robert Pazen

Kate McLean and Steve Stone

### Tom Pfeiler

Mr. & Mrs. Robert Brown

### Nelson "Hank" Pfister

John and Margaret Given  
William and Elise Kearney  
John Menne  
Gary and Vicki Nichols  
John and Stephanie Orr  
Richard Pidduck  
Dorcas Thille  
Thomas and Esther Wachtell  
Janice Willis

### Murray Pinkerton

Kathleen Hobson

### Ron Rose

Meredith Treadwell

### Mike Shannon

Mr. & Mrs. Robert Brown

### Leonard Soprano

Claudia Morrison

### Rose Marie Souza

Portuguese Fraternal Society of America  
Helen Rolls

### Raymond E. Swift

AG RX  
Diane Bovee  
Claire Carty  
Charles Covarrubias  
Crop Production Services  
Richard and Noel Daily  
Mr. & Mrs. Milton Daily, Jr.  
Tom and Connie Deardorff  
Valerie Estvan  
Farm Credit West  
Larry and Deonne Greene  
Craig and Denise Held  
William and Elise Kearney  
Allan Kurihara  
Thomas and Barbara Laubacher, Jr.  
Emma Mayer  
Yolanda McCune  
Walter McKinny  
Kate McLean and Steve Stone  
John Menne  
James Naumann  
Mary Naumann  
John and Stephanie Orr  
Allan Pinkerton Family  
William and Linda Ramelli  
George and Norma Reber  
David and Yvonne Scholle  
Martha Spriggs  
Wanda Todd and Family  
Umina Brothers Inc  
Marilynn Viles  
Linda White

### Don Wayman

Richard Pidduck

### Barbara Wear McDivitt Wilson

Richard Pidduck

### Helen Yunker

Elena Brokaw and Pat Miller



# MUSEUM OF VENTURA COUNTY

## 2019/2020 Exhibits

Jan-March 2019	<b>Chris Hillman: Time Between</b> (MVC)
Feb-May 2019	<b>Design in the Making</b> Ventura County Architecture (MVC)
Feb-July 2019	<b>The Chinese</b> (George Stuart Figures) (MVC)
Feb-Mar 2019	<b>Buenaventura Art Association</b> Open Competition (Pavilion)
Mar-June 2019	<b>Santa Paula's Treasured Architecture</b> Photography by Michael Moore (AG)
Mar-May 2019	<b>The Oaks</b> Re-oaking after the Fires (AG)
Mar-April 2019	<b>Broken</b> Glass Installation Holocaust Memorial (MVC)
April-May 2019	<b>VUSD</b> All Student Art Exhibit (MVC)
June-August 2019	<b>Music by the Masters</b> History of the Ojai & Ventura Music Festivals (MVC)
June-Sept 2019	<b>Invasive and Beneficial Species in Agriculture</b> (AG)
May-June 2019	<b>Perspectives on Peace</b> Downtown Rotary Scholarship Winners (Pavilion)
June-August 2019	<b>Actual Reality</b> Carlos Grasso and Peter Fox (MVC)
June-August 2019	<b>In the Fields of the North</b> En Los Campos del Norte (AG)
Sep-Dec 2019	<b>California Cool</b> Mid Century Modernism in S. California (MVC)
Sept-Dec 2019	<b>Compton Cowboys</b> Photography Exhibit (AG)
Oct-Nov 2019	<b>Buenaventura Collegiate Exhibition</b> (Pavilion)
Feb-April 2020	<b>Mending the Divide</b> Ojai Studio Artists (Pavilion)
March-April 2020	<b>Ventura College</b> Past, Present and Future (MVC)
April-May 2020	<b>Learning to See</b> Focus on the Masters Student Exhibit (Pavilion)

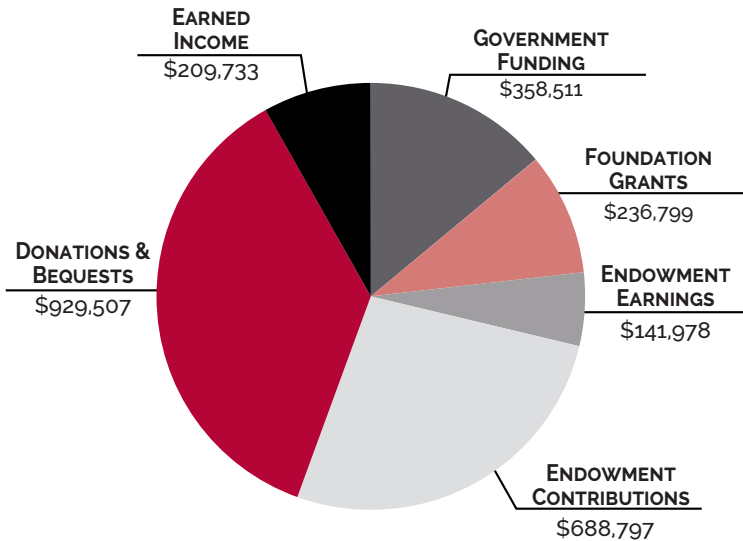




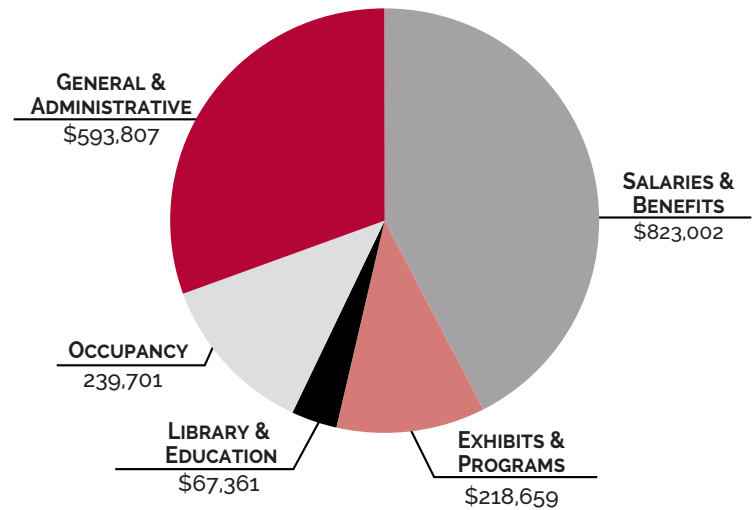
# MUSEUM OF VENTURA COUNTY

## 2018 Financials

### INCOME \$2,565,325



### EXPENSES \$1,942,531



*This financial information is prepared internally and is subject to audit adjustment.*

*The audited financial statements for the year ended September 30, 2018 will be posted on the Museum's website when issued by the Board of Directors.*

### VITAL FUNDING FROM LOCAL AND REGIONAL GOVERNMENT

In 2017, the Museum was facing a set of circumstances that threatened its future. After exploring, pursuing and exhausting a variety of options to stabilize its resources and expenses, the Museum requested emergency funding from Ventura County and from the City of Ventura to keep its doors open.

In July of 2017, the City and County agreed to fund the Museum for six months, with the potential for continued funding if the Museum were able to achieve an ambitious set of milestones and accomplishments. The Museum was able to meet, and in most cases exceed, those requirements, and in June of 2018, the County and City both made five-year financial commitments to the Museum, with the understanding that more goals and milestones would be met each year.

Neither the City nor the County made its financial contributions lightly. Both established specific and significant requirements to ensure that the Museum would use the funds to achieve the agreed-upon goals.

These goals include:

- County funding required that, by the end of 2018, MVC would have removed all of its document and artifact collections out of paid storage areas. This required swift action to review collections and de-accession as many items as possible. We are proud to have met this milestone.
- City funds require that MVC raise \$2 million in its endowment by June of 2019. We are proud to share that we have raised over \$3 million and are thankful to our many donors and to our dedicated Endowment Committee.
- City and County funds require that we increase our earned revenue (income from admissions, sales, programs, rentals) by 50 percent by June of 2019. This means we must hone our offerings to ensure that we are providing programs and exhibits that the public wants, and that we can measure results by the income generated. We are on track to achieve this goal, and ask for your continued support.

# Moving Forward



Dear Friends,

It is hard to believe that 2018 has finally come to a close. Beginning the year with the Thomas Fire and ending with the Borderline tragedy and the Woolsey and Hill fires, our County faced unprecedented challenges. Amongst all the sadness and confusion, your Museum rose to the occasion to make sure those terrible stories were

recorded for history with pictures, videos and personal stories that will continue to be told for years to come...We will not forget.

At the Museum, 2018 was also a year full of change and progress. We welcomed new staff and built new partnerships that will have a lasting and positive impact on our County. We are continuing to work on creating more ways for people to volunteer with the Museum so we can increase the diversity and number of community members sharing their voices to help shape our programs and tell the stories of our history.

We experienced a record year and achieved a new milestone in public attendance and participation in our programs, but we recognize that more can be done to truly attract all ages and geographic areas to attend our activities.

Our success is our community's success. It is a testament to the commitment and passion of our partner agencies, our financial supporters, our volunteers and our staff. It hasn't always been easy. We've had to adjust our processes and make hard decisions. We've asked more from our supporters than ever before. But the positive result of these efforts is undeniable.

Join us as we continue our work to make the Museum a vibrant, timely destination and resource for all the people of Ventura County. There are many ways you can help—join our social media sites, like us on Facebook, sign up for our "What's Happening at the Museum," attend one of the multitude of lectures, events or exhibitions, become a member, make a donation. We look forward to seeing you in 2019.

Warmest Regards,  
Kate McLean  
Chair, Board of Directors

## BOARD OF DIRECTORS

Kate McLean, *Chair*  
Bill Kearney, *Vice Chair*  
Mike Sedell, *Treasurer*  
Al Lowe, *Secretary*

Yissel Barajas  
Betsy Chess  
Gordon Kimball  
Leslie Leavens  
Richard Rush  
Jim Scanlon  
Peter Zierhut



# Museum Committees

## COMMUNITY INVOLVEMENT

The Museum depends on the volunteer time and talent of many dedicated community members to offer the programs and exhibits it provides each year. We welcome community members who are interested in joining our team to volunteer for one of these committees. All committee members are listed on the website, [www.venturamuseum.org](http://www.venturamuseum.org).

## COMMITTEES OF THE BOARD

**Advancement** oversees fundraising activities to ensure that the Museum has the financial resources to reach and support its mission and annual programs.

**Audit** ensures that the Museum's financial systems are audited regularly by a qualified entity to ensure that they are accurate and meet professional standards.

**Finance and Investment** ensures that the Museum acts as a responsible steward in managing its financial resources to accomplish its mission in an effective and efficient manner, and to adhere to all legal requirements and accounting principles to ensure fiscal responsibility and build public trust.

**Governance** reviews the Museum's leadership and management infrastructure and refines the policies, procedures and legal documents that support best practices for nonprofit organizations and ensure that MVC moves into the future with the strongest building blocks.

## ADVISORY COMMITTEES

**Accessions** considers potential collection and deaccession of history related materials.

**Agriculture Advisory and Farm Implements** advises in the operation of the Agriculture Museum (Ag Museum) and for the development and maintenance of the farm implement collection.

**Docent Volunteer** provides volunteer services to the Museum.

**Endowment** creates a strong and stable base of continued support for the MVC through Endowment Funds.

**Fine Arts** promotes interest, appreciation, education and research in art through exhibits, collection, conservation and preservation of fine and decorative art for the edification of the Museum audience.

**Latino Advisory** advises the Museum on programs and exhibits that reflect and involve Latino and Chicano culture and history.

## NEW COMMITTEE LAUNCHING IN SPRING OF 2019

The Museum will launch a new Committee: the MVC Innovation Committee. This committee will advise the Museum on how to achieve its vision to be of, by and for the community. The first meeting will be held in late March of 2019. We are currently looking for volunteers for this new committee! We hope to have a committee that is broadly representative of our diverse and unique county, with members from all cities, of ages from 18 to 108, with educations from high school equivalency degrees to advanced degree holders, of all gender identifications, representing the many cultures and ethnicities that make up our county.

The Committee will meet three times a year and will provide ideas into and feedback on exhibits, programs, education, events, and much more.

**Make the MVC YOUR Museum.  
Please join the MVC Innovation Committee!**

Committee members are appointed by the Board of Directors, and can be recommended by anyone, including the prospective member him or herself. The only requirement to be on any committee is to be a member of the Museum (memberships start at \$40 per year). All committees meet with staff members who provide administrative and informational support.

Anyone interested in joining a Museum committee is invited to contact Denise Sindelar, Programs Director, at [dsindelar@venturamuseum.org](mailto:dsindelar@venturamuseum.org) or at 805-653-0323, ext. 308.

# Volunteers—the Heart of Our Museum!

## VOLUNTEERING: DOING MORE FOR A CAUSE YOU ARE PASSIONATE IN SUPPORTING.

Dedicated docents and volunteers have been bringing passion and skills to our Museum for 43 years. In support of the Museum's core mission, docents and volunteers continue to support library operations, school tours, curatorial efforts and exhibit preparation and construction. Their interface with Museum visitors creates an enriched and memorable experience.

Over the past two years our docents and volunteers have been at the heart of supporting a reinvented Museum by rethinking products and services to improve our economic position and to remain competitive in the marketplace. In this climate of change, the role of volunteers has become increasingly important in our Ventura community. Our volunteer workforce is meeting that challenge. Thank you, docents and volunteers.



## THANK YOU, DOCENTS AND VOLUNTEERS.

Judi Waters Allen (D)	Marcia Marcus (D)
Mimi Allin (E)	Pat Masterson (E)
Lynn Arneill-Brown (D)	Harriet McNamara (D)
Lila M. Atkisson (E)	Suzy Melonas (D)
Ruth Austin (E)	Teddi Morris
Barbara Bean (D)	Vivian Nelson (D)
Jane Blackman (D)	Barbara Niles (E)
Joanne Bowie (D)	Merle Oberg (D)
Cherie Brant (D)	Jeanne Pruitt (E)
Alice Braun (E)	Anna Marie Reilly (D)
Gerry Browning (D)	Ron Rodriguez (D)
Ernie Calvillo (D)	Beverly Russell
Rosalee Calvillo (D)	Joyce Schoppe (D)
Joyce E. Cantrell (E)	Mary Schwabauer (E)
Glenda Cardona (D)	Louise Sharp (E)
Connie Casavan (E)	George Short (E)
Marion Cole	Kathy Sisson (D)
Roberta Cordell (D)	Marje Spencer (E)
Richard Dodd	Karilyn Steward (E)
Chris Drucker (E)	Mary Stewart (D)
Loretta DuBois (E)	Barbara Topping (D)
Barbara Dupree (D)	Marian Totheroh (E)
Eleanor Fishburn (D)	Robert Tovias
Terri Fulton (D)	Janice Turner (E)
Nancy Gallagher (D)	Linda Velthoen (D)
Wendy Gayner Wood	Mary Volpe
Ross Goodman (D)	Peggy Watson
Kristine Guzman	Tessa Weeks
Linda Hadlen (D)	Dotty Wheeler (E)
Jack Hewson (E)	Sylvia Wikholm (E)
Barbara Hilburn	Gail Wohlenberg (E)
Kay Hill (E)	Alberta Word (D)
Judy Hodson (D)	
Jim Holden (D)	(D) – Docent
Jeanne Hunt (D)	(E) – Docent Emeritus
Linda Kimbrough (D)	
Saria Kraft	
Robin Lamar	
Ilse Lang (D)	
Brenda Loree	
Rosemarie Magness (E)	



# Support Your Museum

## Sponsorship Opportunities

The Museum offers business and sponsorship opportunities for companies and professionals committed to supporting the Museum of Ventura County's exhibits, programming and community outreach initiatives as a shared cause for enhancing the quality of life in our community.

Sponsors receive recognition on the Museum's signage and website, enjoy exclusive event privileges, and complimentary admission and special access for their clients and employees. For more information regarding sponsorship opportunities and benefits please **contact the Development Department at (805) 653-0323 x 303.**

## There's something for everyone at the Museum of Ventura County.

*Explore the history, culture and art of Ventura County and discover what makes us unique.*

## Become a Member today!

Members not only participate in cultural and social opportunities throughout the year, they also support the museum's educational tours, maintenance of the collection and Research Library and Archives, and programs that serve the community. For more information about Membership opportunities please **contact the Development Department at (805) 653-0323 x330.**



*Major funding for these programs is made possible by the City of San Buenaventura, the County of Ventura and private and community donors.*



**MUSEUM OF VENTURA COUNTY**

100 East Main Street  
Ventura, CA 93001  
Phone: 805.653.0323



**THE AGRICULTURE MUSEUM**

926 Railroad Avenue  
Santa Paula, CA 93060  
Phone: 805.525.3100