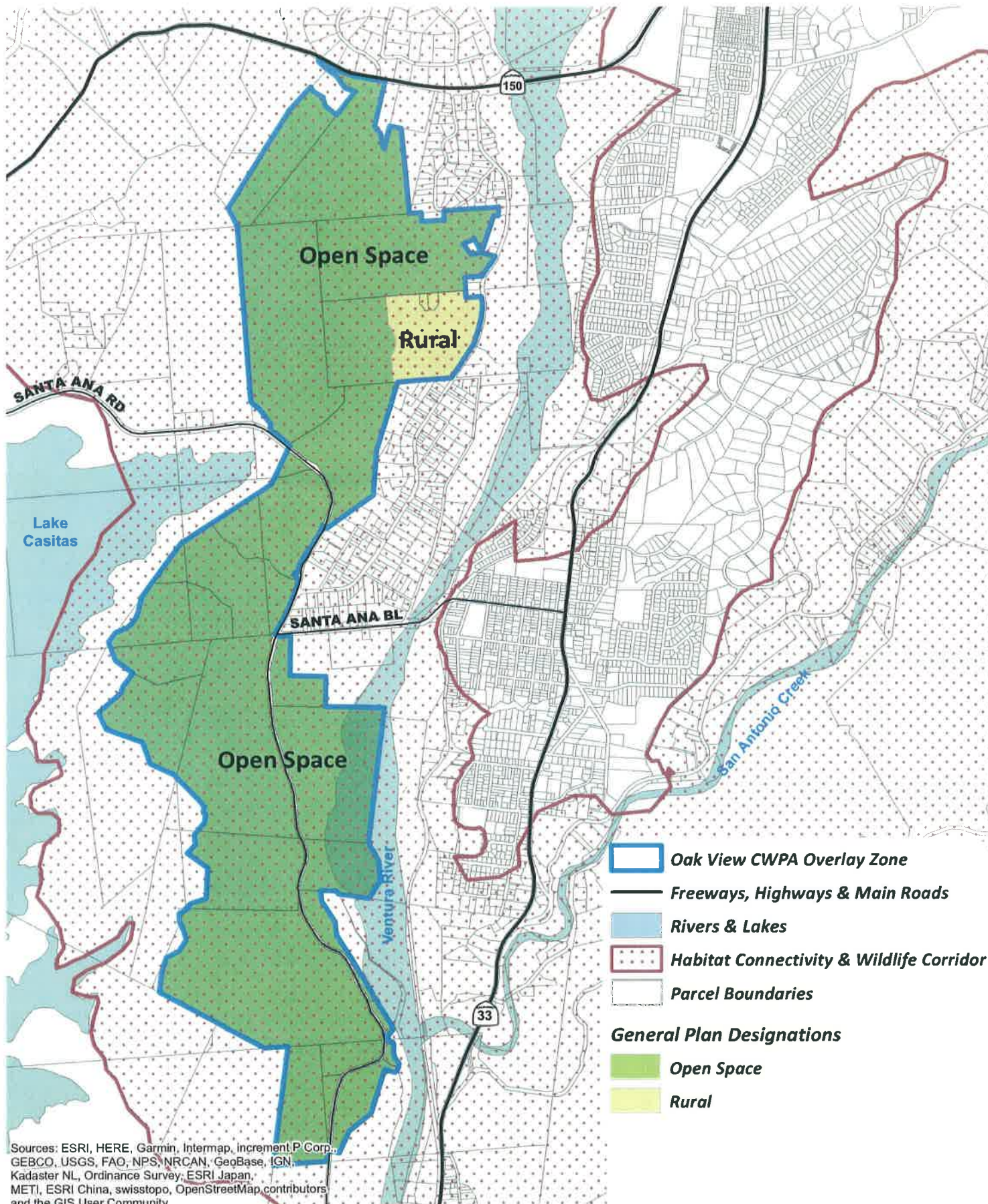


Exhibit 4

**Board-approved General Plan map identifying Oak View Critical Wildlife Passages
Area (Resources Appendix, Figure 1.5.6)**



Sources: ESRI, HERE, Garmin, Intermap, increment P Corp., GEBCO, USGS, FAO, NPS, NRCAN, GeoBase, IGN, Kadaster NL, Ordnance Survey, ESRI Japan, METI, ESRI China, swisstopo, OpenStreetMap contributors, and the GIS User Community



Ventura County
Resource Management Agency
Information Systems GIS Services
Map created on 1/11/2019



County of Ventura
Board of Supervisors
PL16-0127
**SR Exhibit 9 - Oak View Critical
Wildlife Passage Area Map (Resources
Appendix Figure 1.5.6)**

0 800 1,600 3,200 Feet

Disclaimer: this map was created by the Ventura County Resource Management Agency Information Systems GIS, which is designed and operated solely for the convenience of the County and related public agencies. The County does not warrant the accuracy of this map and no decision involving a risk of economic loss or physical injury should be made in reliance therein.

