



Public Works Agency Report on Project Notification Improvements

Ventura County

January 28, 2024

Presented by: Gregg R. Strakaluse, Director



Presentation Overview

1. Background
2. Project or Activity Classifications
3. Existing Methods & New Approaches to Notification
4. Alternative Notification Platforms
5. Summary of Efforts
6. Questions & Comments

Background

- September 24, 2024 Board of Supervisors Meeting
- Supervisor Gorell's letter requesting a Public Works Project Notification System
 - ✓ Keep Supervisors Informed
 - ✓ Enhance Public Awareness
 - ✓ Provide Opportunities for Feedback
 - ✓ Foster Transparency & Accountability
 - ✓ Include Considerations for Emergency Notification

Classification of Public Works Projects & Activities

1. Operations & Maintenance
2. Capital Projects
3. Urgent & Unanticipated Projects (*Public Works Emergencies*)

Classification #1

Operations & Maintenance

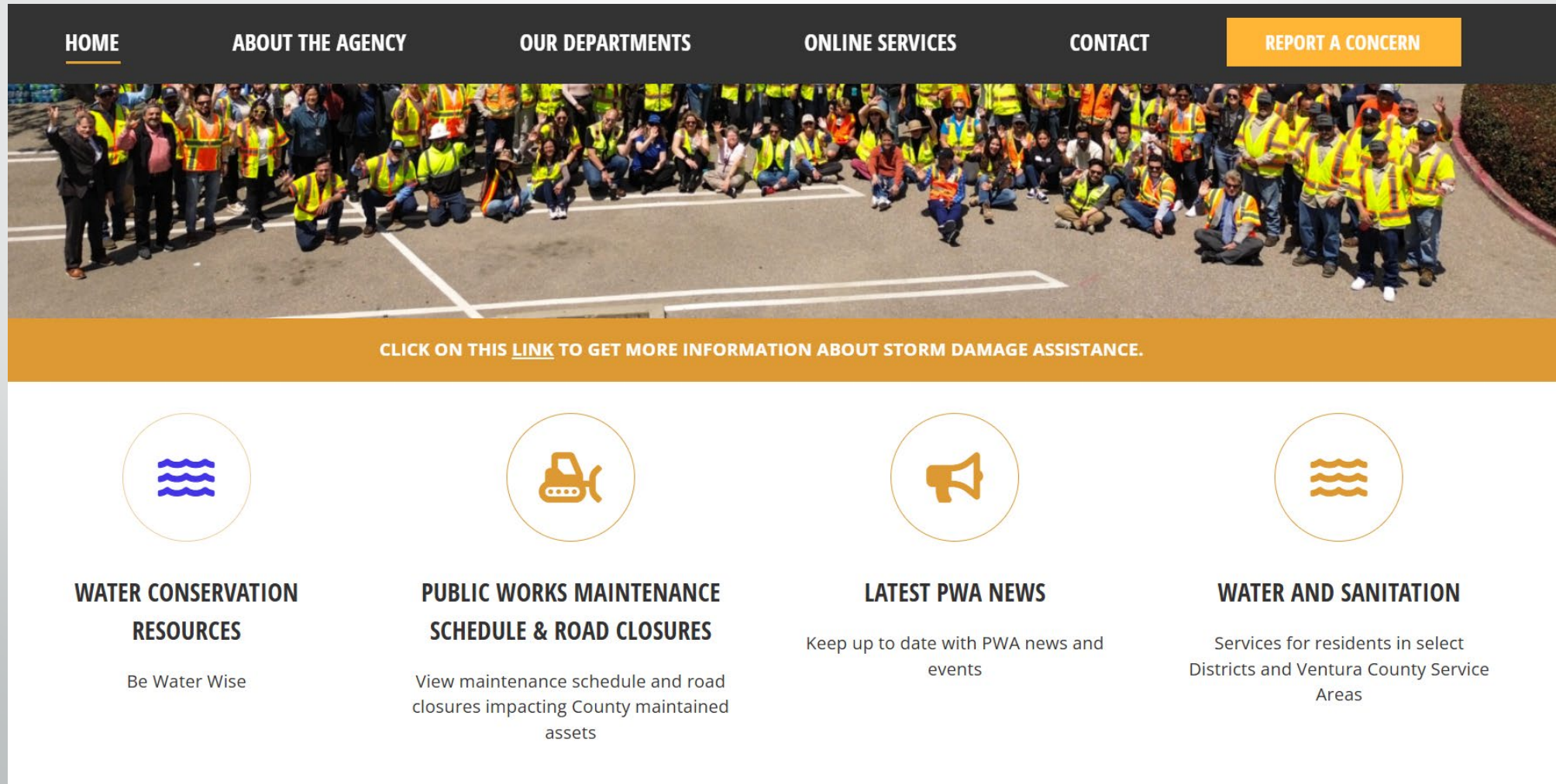
- Typical repairs, maintenance, and service to infrastructure;
- May be one-time, periodic, or routine;
- Short in duration and usually completed within hours, days, or weeks;
- May include:
 - ✓ pipe, inlet, and culvert cleaning
 - ✓ pavement maintenance
 - ✓ street sweeping
 - ✓ roadway landscape maintenance
 - ✓ traffic sign and signal maintenance
 - ✓ vegetative maintenance
 - ✓ other similar activities

Classification #1

Operations & Maintenance

NEW!

- <https://www.vcpublicworks.org>



The screenshot shows the homepage of the VCP Public Works website. At the top is a dark navigation bar with links: HOME, ABOUT THE AGENCY, OUR DEPARTMENTS, ONLINE SERVICES, CONTACT, and a highlighted orange button for REPORT A CONCERN. Below the navigation bar is a large banner image of a diverse group of public works employees in safety vests posing on a street. Underneath the banner is an orange bar with the text: "CLICK ON THIS [LINK](#) TO GET MORE INFORMATION ABOUT STORM DAMAGE ASSISTANCE." The main content area features four circular icons in a row: water waves, a bulldozer, a megaphone, and another set of water waves. Each icon is followed by a section title and a brief description of the services or resources provided.

HOME ABOUT THE AGENCY OUR DEPARTMENTS ONLINE SERVICES CONTACT **REPORT A CONCERN**

CLICK ON THIS [LINK](#) TO GET MORE INFORMATION ABOUT STORM DAMAGE ASSISTANCE.

WATER CONSERVATION RESOURCES
Be Water Wise

PUBLIC WORKS MAINTENANCE SCHEDULE & ROAD CLOSURES
View maintenance schedule and road closures impacting County maintained assets

LATEST PWA NEWS
Keep up to date with PWA news and events

WATER AND SANITATION
Services for residents in select Districts and Ventura County Service Areas

NEW!

- QUICK LINKS
- [Active Transportation Plan](#)
- [Bike Lane Sweeping](#)
- [County Road Inventory](#)
- [County Road Standards](#)
- [County, City, and Caltrans Projects](#)
- [County Sidewalk Repair Standards](#)
- [Federal Policies and Programs](#)
- [Frequently Asked Questions](#)
- [Multi Year Pavement Plan](#)
- [Ordinances, Policies, and Guidelines](#)
- [PWA-RT Interactive Map](#)
- [SB1-RMRA Map](#)
- [Traffic Impact Mitigation Fees](#)
- [Transportation Active Projects](#)
- [Transportation Reports and Programs](#)
- [Vehicle Miles Traveled Proposed Threshold](#)

TWO WEEK OUTLOOK

- [Two Week Maintenance & Operations Look Ahead](#)
- [Roads & Transportation Bike Lane Sweeping Services Map](#)
- [Road Ventura County Closure Map](#)
- [Watershed Hydrodata](#)
- [Zone 1 & 2 Herbicide Calendar](#)
- [Zones 3 & 4 Herbicide Calendar](#)
- [Channel Cleanout Schedules by Supervisorial District Sand-Silt-Debris](#)

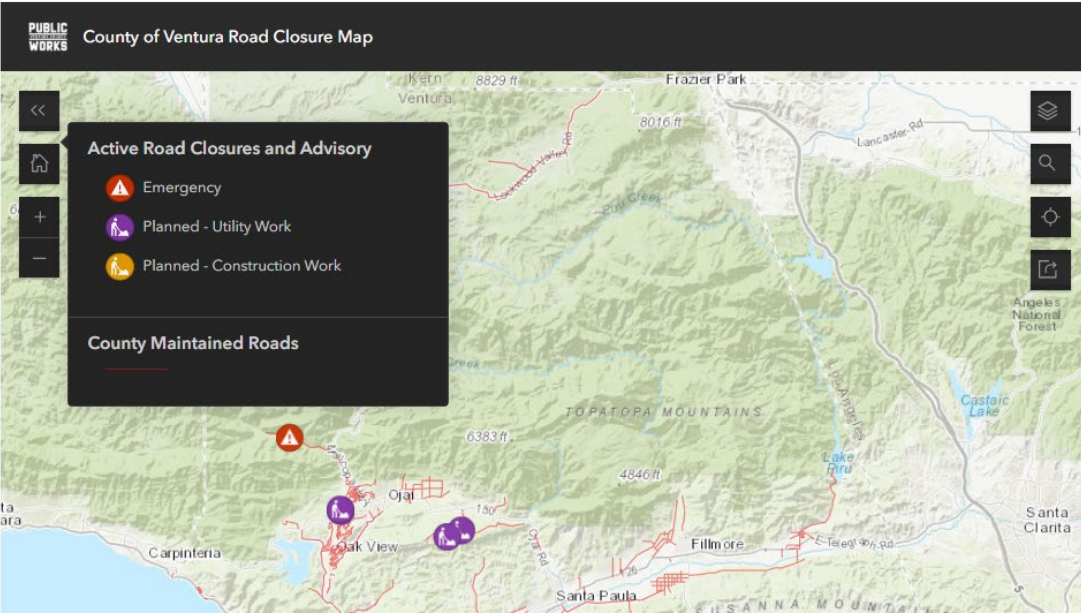
CALTRANS ROADWAY TRAVEL ALERT MAP

[Road Closures and Advisories provided by Caltrans](#)

VENTURA COUNTY ROADWAY TRAVEL ALERTS

Road Closures and Advisories Affecting County Roads

Roads and Transportation is responsible for planning, designing, funding, building, operating and maintaining the County Road System, approximately 542 centerline miles of roadway, bridges, drainage and related transportation facilities, coordination of unincorporated area public transit needs, and provision of general transportation advice to the Board of Supervisors.



NEW!

2-Week Outlook Updated Weekly

PUBLIC WORKS <small>VENTURA COUNTY</small>	PUBLIC WORKS MAINTENANCE		2 WEEK LOOK-AHEAD													
			JANUARY													
			5	6	7	8	9	10	11	12	13	14	15	16	17	18
ROADS & TRANSPORTATION	ACTIVITY	WEST COUNTY LOCATIONS	SUN.	MON.	TUE.	WED.	THUR.	FRI.	SAT.	SUN.	MON.	TUE.	WED.	THUR.	FRI.	SAT.
EAST OJAI	SIGN MAINTENANCE	EAST OJAI AREA (MINIMAL TRAFFIC IMPACT)		X	X	X	X									
OXNARD PLAINS	VEGETATION CONTROL HAND CREW	VARIOUS LOCATIONS (MINIMAL TRAFFIC IMPACT)		X	X	X	X									
OXNARD PLAINS	DITCH MAINTENANCE	CAWELTI RD		X	X	X	X				X	X	X	X		
OXNARD PLAINS	GUARDRAIL REPAIR	LAGUNA ROAD (MINIMAL TRAFFIC IMPACT)			X	X	X									
MEINERS OAKS AREA	TREE TRIMMING	VARIOUS LOCATIONS (MINIMAL TRAFFIC IMPACT)		X	X	X	X									
CASITAS AREA	CULVERT REPAIR	CASITAS VISTA RD									X	X				
MEINERS OAKS AREA	STORM REPAIR	MATILUA CYN RD		X	X	X	X				X	X	X	X		
VENTURA AVE AREA	DITCH MAINTENANCE	SHELL RD											X	X		
YERBA BUENA AREA	STORM REPAIR	YERBA BUENA RD		X	X	X	X									
WATERSHED PROTECTION	ACTIVITY	WEST COUNTY LOCATIONS	SUN.	MON.	TUE.	WED.	THUR.	FRI.	SAT.	SUN.	MON.	TUE.	WED.	THUR.	FRI.	SAT.
			5	6	7	8	9	10	11	12	13	14	15	16	17	18
SANTA PAULA/FILLMORE	HAND SPRAY	SANTA PAULA, FILLMORE		X	X	X	X				X					
OXNARD	FENCE REPAIR	EL RIO DRAIN / SANTA CLARA RIVER		X	X						X					
OXNARD	FENCE REPAIR	ORMOND LAGOON				X	X				X					
OXNARD	NPOES	WASON BARRANCA / FRANKLIN		X	X						X	X	X	X		
VENTURA	VEG. REMOVAL HAND	SANTA PAULA CREEK		X	X	X					X	X	X	X		
PORT HUENEME	CONCRETE REPAIR	OXNARD WEST / VENTURA RD											X	X		
PIRU	BASIN CLEANOUT	WARRING DEBRIS BASIN		X	X						X	X	X	X		
VENTURA	GRAFFITI	VARIOUS LOCATIONS				X	X				X	X				
OXNARD	MOVING	REVELON SLOUGH			X	X	X				X	X	X			
FILLMORE	BASIN CLEANOUT	JEPSON DEBRIS BASIN		X	X	X	X				X	X	X	X		
ROADS & TRANSPORTATION	ACTIVITY	EAST COUNTY LOCATIONS	SUN.	MON.	TUE.	WED.	THUR.	FRI.	SAT.	SUN.	MON.	TUE.	WED.	THUR.	FRI.	SAT.
			5	6	7	8	9	10	11	12	13	14	15	16	17	18
SIMI VALLEY AREA	SHOULDER MAINT	TAPO CANYON RD (ONE LANE CLOSURE)									X	X	X	X		
PIRU/BARDSDALE AREA	DITCH MAINTENANCE	GUIBERSON RD (ONE LANE CLOSURE)									X	X	X	X		
MOORPARK/SOMIS AREA	DITCH CLEANING	WATERS RD (ONE LANE CLOSURE)		X	X	X	X									
EAST COUNTY	HAND PATCHING	EAST COUNTY AREA (ONE LANE CLOSURE)		X	X											
PIRU/BARDS AREA	SHOULDER MAINT	HOWE RD (ONE LANE CLOSURE)		X	X	X	X									
EAST COUNTY	CULVERT CLEANING	EAST COUNTY AREA (ONE LANE CLOSURE)		X	X	X	X				X	X	X	X		
PIRU/BARDSDALE	SIGN MAINTENANCE	PIRU / BARDSDALE AREA (ONE LANE CLOSURE)		X	X	X	X									
WATERSHED PROTECTION	ACTIVITY	EAST COUNTY LOCATIONS	SUN.	MON.	TUE.	WED.	THUR.	FRI.	SAT.	SUN.	MON.	TUE.	WED.	THUR.	FRI.	SAT.
			5	6	7	8	9	10	11	12	13	14	15	16	17	18
CAMARILLO	EROSION REPAIR	CONEJO CREEK D/S ADOHR RD		X	X	X	X				X	X	X	X		
CAMARILLO	WEED ABATEMENT	VARIOUS LOCATIONS IN CAMARILLO		X	X	X	X				X	X	X			
THOUSAND OAKS	WEED ABATEMENT	VARIOUS LOCATIONS IN T.O. / NEWBURY PARK		X	X	X	X				X	X	X	X		
THOUSAND OAKS	EROSION REPAIR	WAVERY U/S YOUNG		X	X	X	X				X	X	X	X		
SIMI VALLEY	VEG. REMOVAL HAND	ERRINGER RD TO ROYAL		X	X	X	X									
SIMI VALLEY	VEG. REMOVAL HAND	ROYAL AVE TO TAPO CYN RD		X	X	X	X				X	X	X	X		
SIMI VALLEY	WEED ABATEMENT	VARIOUS LOCATIONS IN SIMI		X	X	X	X				X	X	X	X		
SIMI VALEY	SUB DRAIN FLUSHING	RUNKLE D.B./ ARROYO SIMI		X	X	X	X									
REAL ESTATE SERVICES	ACTIVITY	COUNTYWIDE LOCATIONS	SUN.	MON.	TUE.	WED.	THUR.	FRI.	SAT.	SUN.	MON.	TUE.	WED.	THUR.	FRI.	SAT.
			5	6	7	8	9	10	11	12	13	14	15	16	17	18
CASA CONEJO - THOUSAND OAKS	STREET SWEEPING	Map PARKING DISCOURAGED (EVERY 2nd & 4th WEDNESDAY)				X										
CASA CONEJO - THOUSAND OAKS	LANDSCAPING SERVICE		Lindero Canyon Road & Golden Eagle Drive													
LYNN RANCH - THOUSAND OAKS	STREET SWEEPING	(EVERY 2nd & 4th TUESDAY)			X											
OAK PARK - B ROUTE	LANDSCAPING SERVICE		Kanan Road btwn Lindero Cyn Rd & Churchwood DR													
OAK PARK - B ROUTE	STREET SWEEPING	(EVERY 1st & 3rd THURSDAY)												X		

NEW!

PILLMORE	BASIN CLEANOUT	JEPSON DEBRIS BASIN	X	X	X	X		
ROADS & TRANSPORTATION	ACTIVITY	EAST COUNTY LOCATIONS	SUN.	MON.	TUE.	WED.	THUR.	FRI.
			5	6	7	8	9	10
SIMI VALLEY AREA	SHOULDER MAINT	TAPO CANYON RD (ONE LANE CLOSURE)						
PIRU/BARDSDALE AREA	DITCH MAINTENANCE	GUIBERSON RD (ONE LANE CLOSURE)						
MOORPARK/SOMIS AREA	DITCH CLEANING	WATERS RD (ONE LANE CLOSURE)		X	X	X	X	
EAST COUNTY	HAND PATCHING	EAST COUNTY AREA (ONE LANE CLOSURE)		X	X			
PIRU/BARDS AREA	SHOULDER MAINT	HOWE RD (ONE LANE CLOSURE)		X	X	X	X	
EAST COUNTY	CULVERT CLEANING	EAST COUNTY AREA (ONE LANE CLOSURE)		X	X	X	X	
PIRU/BARDSDALE	SIGN MAINTENACE	PIRU / BARDSDALE AREA (ONE LANE CLOSURE)		X	X	X	X	
WATERSHED PROTECTION	ACTIVITY	EAST COUNTY LOCATIONS	SUN.	MON.	TUE.	WED.	THUR.	FRI.
			5	6	7	8	9	10
CAMARILLO	EROSION REPAIR	CONEJO CREEK D/S ADOHR RD		X	X	X	X	
CAMARILLO	WEED ABATEMENT	VARIOUS LOCATIONS IN CAMARILLO		X	X	X	X	
THOUSAND OAKS	WEED ABATEMENT	VARIOUS LOCATIONS IN T.O. / NEWBURY PARK		X	X	X	X	
THOUSAND OAKS	EROSION REPAIR	WAVERY U/S YOUNG		X	X	X	X	
SIMI VALLEY	VEG. REMOVAL HAND	ERRINGER RD TO ROYAL		X	X	X	X	
SIMI VALLEY	VEG. REMOVAL HAND	ROYAL AVE TO TAPO CYN RD		X	X	X	X	
SIMI VALLEY	WEED ABATEMENT	VARIOUS LOCATIONS IN SIMI		X	X	X	X	
SIMI VALEY	SUB DRAIN FLUSHING	RUNKLE D.B / ARROYO SIMI		X	X	X	X	

2-Week Outlook East County

Classification #2

Capital Projects

- A large investment that builds or improves a capital asset.
- Projects can be implemented in phases that may extend over years and include planning, engineering design, public involvement, land acquisition, permitting, and construction.
- Examples:
 - ✓ watermain replacement or well rehabilitation
 - ✓ lift station upgrades
 - ✓ road widening
 - ✓ new traffic signals
 - ✓ levee modifications
 - ✓ bridge Improvements

IMPROVED

Classification #2



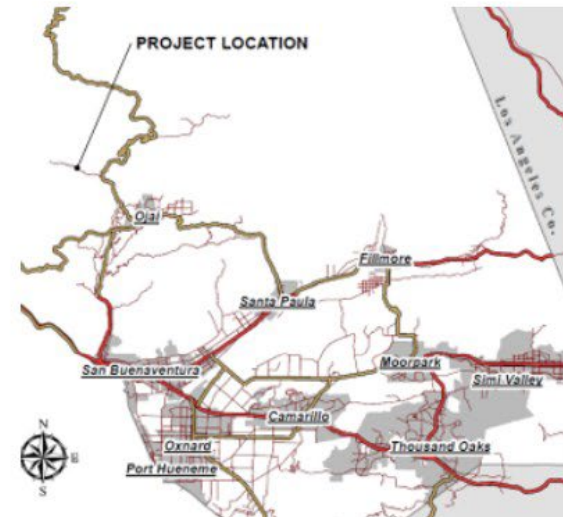
Department Project Updates

- <https://www.vcpbublicworks.org/project-updates/>

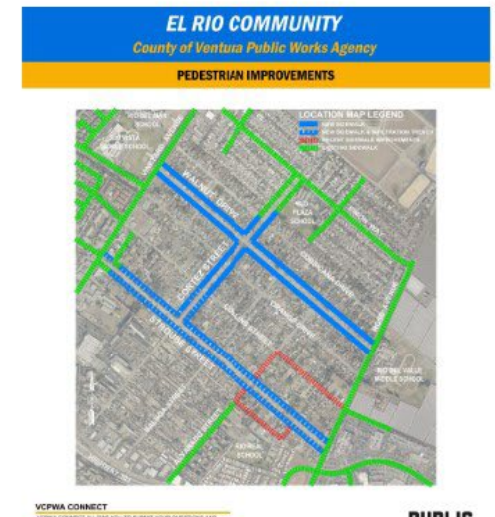
DEPARTMENT PROJECT UPDATES



COYOTE CREEK PILOT CHANNEL UPDATE



MATILAJA ROAD EMERGENCY REPAIRS



EL RIO SIDEWALK PROJECT

IMPROVED



VCPWA CONNECT

VCPWA CONNECT ALLOWS YOU TO SUBMIT YOUR QUESTIONS AND CONCERNS AND OTHER ISSUES SUCH AS ILLEGAL DUMPING, REPORT GRAFFITI, AND ROAD MAINTENANCE ISSUES.

VCPWA LOOKS FORWARD TO CONNECTING WITH YOU AND APPRECIATE YOUR HELP WITH KEEPING VENTURA COUNTY GREAT.

DOWNLOAD THE VCPWA CONNECT! APP

PUBLIC
VENTURA COUNTY
WORKS

www.vcpublicworks.org/elrio

Upcoming Construction Activities (through mid-October)

- New 36" storm drain pipe including catch basins for Alvarado W/O Walnut
- New curb & gutter, sidewalk, and drive way tie-ins on Stroube (South Side only) from Balboa to Cortez
- New curb & gutter, sidewalk, and drive way tie-ins on Stroube (South Side only) from Cortez to Vineyard
- New access ramps at Stroube/Cortez intersection
- Edison utility power pole relocations at Stroube and Walnut

Construction completion anticipated mid-April 2025.

For more information click [Here](#).

Capital Projects Involvement & Notification:

Design: Public Involvement Program & Project Manager

Construction: Construction Inspector & Project Manager

RESIDENTS OF EL RIO

CONSTRUCTION WORK IS UNDERWAY FOR THE EL RIO SIDEWALK PROJECT!

- Ventura County Public Works Agency (VCPWA) has hired a Contractor to construct the El Rio Pedestrian Improvement Project (Project).
- Project will include minor pavement widening, curb & gutter, sidewalk, driveway approaches, access ramps and curb extensions (bulb-outs), rectangular rapid flashing beacons, crosswalks and drainage improvements.
- Project improvements are planned for Stroube Street, Walnut Drive and Cortez Street at this time only.
- Construction is anticipated to take nine months starting mid-August 2024 and ending mid-April 2025.
- Below is the construction schedule and map to reference. (Note: Approximate dates shown. Construction schedule may change. Revisit construction schedule frequently for latest updates).

For questions please contact Gianfranco Laurie at (805)654-2063 or at Gianfranco.Laurie@ventura.org.

For more project details please visit www.vcpublicworks.org/2021/10/13/el-rio-pedestrian-improvements/

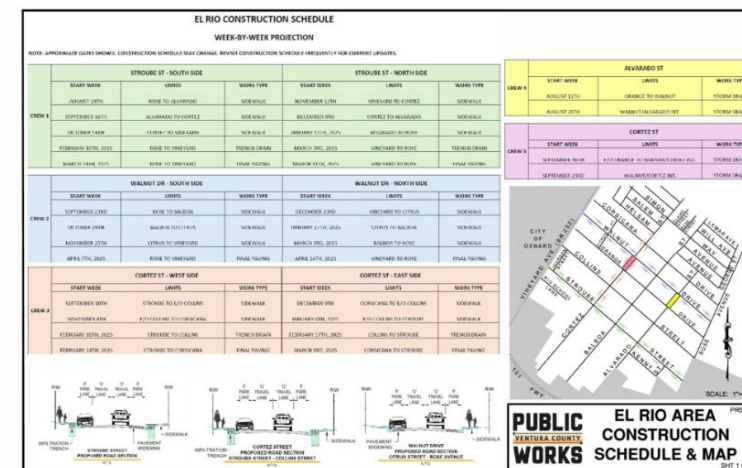


PUBLIC OUTREACH MATERIALS

- [Design Exhibits](#)

ARCHIVE MATERIALS

- [Public Outreach Meeting Minutes October 2022](#)
- [Question & Answers Public Outreach October 2022](#)
- [Public Outreach Meeting Minutes January 2024](#)
- [Questions & Answers Public Outreach January 2024](#)



Classification #3

Urgent & Unanticipated Projects (Public Works Emergencies)

- Requires rapid response by PWA field teams and/or Contractors.
- Typically, limited impact to the public, but could be connected to a larger emergency or disaster.

- Typical Examples:


- ✓ Downed trees and boulders blocking roads
- ✓ Sewer line obstructions
- ✓ Water main breaks
- ✓ Lift station pump failures
- ✓ Generator failure

Examples Tied to Larger Event:

- ~ Vehicle Crash Causing Traffic Signal Failure
- ~ Mudslide Causing Water/Sewer Main Break
- ~ Earthquake Causing Bridge Damage

Classification #3

Urgent & Unanticipated Projects (PW Emergencies)

- Assessment of the Event
 - Notification
 - Chief Executive Office (phone/email)
 - Public Information Office
 - Supervisor Notification (phone/email)
 - Everbridge (water/sewer) 
 - VC Alert (Office of Emergency Services)
- IMPROVED
- ADDED OPTION



Report Concerns & Ask Questions

- VCPWA CONNECT

- ✓ Smartphone App
- ✓ VCPublicWorks.org

- Phone

- Watershed Protection: 805-654-2018
- Central Services:
- Roads & Transportation:
 - County Traffic Signals: 800-411-0001 (24/7)
 - Roadway Concerns: 805-650-4099 (24/7)
- Water & Sanitation: 805-378-3000 (24/7)

PWA

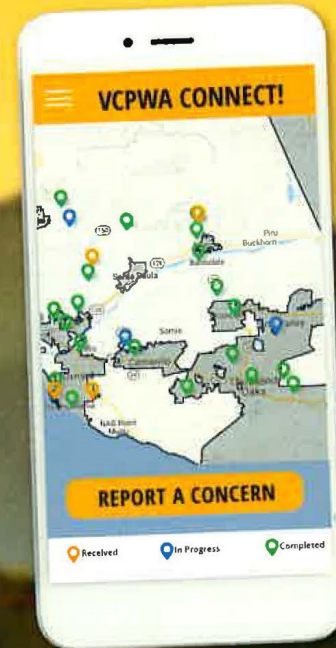


Sheriff Dispatch

805-654-9511 OR 911



PUBLIC
VENTURA COUNTY
WORKS



Available on the
App Store

ANDROID APP ON
Google Play

VCPWA CONNECT!

Additional Research on Notification Options

- Alternative or Supplemental Platforms for Critical Event Notifications
 - Rave Mobile Safety
 - CodeRED
 - Alert Media
 - Regroup Mass Notification



RAVE
MOBILE SAFETY
a Motorola Solutions Company



OnSolve CodeRED



 **AlertMedia**



Regroup 

Summary

- ✓ In-depth Assessment of PWA Notification Methods and Systems
- ✓ Support Prompt and Accurate Communications & Awareness
- 1. NEW: Two-Week Outlook
- 2. IMPROVED: Capital Projects Page
- 3. IMPROVED: Customized Board/CEO Communications (*OES & FD Model*)
- 4. IMPROVED: Phone Communications
 - 24/7 availability
 - clearer menu options
 - call backs for emergencies
- 5. NEW: Social Media Outreach
- 6. NEW: Optional Everbridge Alerts to Supervisors



Thank You!

Questions / Comments...

