

**COUNTY OF VENTURA
PUBLIC WORKS AGENCY**

Date: December 7, 2023

To: All Prospective Bidders

From: Jeff Pratt
Director of Public Works


Addendum No.1

Subject: **Project Name: COUNTYWIDE STORM DRAIN REPAIRS**
Specification No. RD24-04
Bids to be Opened December 20, 2023 at 2:00 P.M. (Unchanged)

Make the following modifications to the bidding documents for subject project:

1. Delete and Replace Project Information and Bidding Documents Page 7. Changes reflected as follows:
 - a. Quantity of Bid Item No. 5 Single Straight Headwalls changed from 3 EA to 4 EA.
 - b. Quantity of Bid Item No. 9 Rip Rap Apron changed from 420 TN to 435 TN.
 - c. Quantity of Bid Item No. 13 Culvert Cleaning changed from 250 LF to 300 LF.
 - d. Quantity of Bid Item No. 15 AC Pavement Repair changed from 45 TN to 70 TN.
 - e. Quantity of Bid Item No. 18 Object Marker changed from 4 EA to 5 EA.
 - f. Quantity of Bid Item No. 21 Minor Concrete changed from 3 CY to 4 CY
 - g. Add New Bid Item No. 23 42" Reinforced Concrete Pipe Culvert at 43 LF.
 - h. Add New Bid Item No. 24 AC Miscellaneous Paving at 5 TN.
2. Add Special Provisions for Section 1029 – Reinforced Concrete Pipe Culvert and Section 1030 – AC Miscellaneous Paving (3 pages).
3. Add Plan Sheet 9A to Plans (1 page).

Acknowledgment of this addendum is required on the Bonfire website when submitting your bid. Failure to do so may result in the disqualification of your bid.

Approved:  _____
Jeff Pratt, Director

12/12/23

Date Approved

BID TABLE

Schedule of work and prices for: **COUNTYWIDE STORM DRAIN REPAIRS**

Item No.	Units	Approx. Quantity	Item Description	Payment Reference	Unit-Prices (In Figures)	Item Total (In Figures)
1	LS	1	Mobilization	9-3.4.2		
2	LS	1	Traffic Control & Construction Signing	1003-7		
3	LS	1	Water Pollution Control	1004-3		
4	LS	1	Structure Excavation & Backfill	1010-3		
5	EA	4	Single Straight Headwalls	1011-2		
6	EA	1	Headwall with Wingwalls	1012-2		
7	LS	1	Debris Barrier	1013-4		
8	SF	675	Reinforced Concrete Apron	1014-4		
9	TN	435	Rip Rap Apron	1015-4		
10	LF	135	Grouted Rip Rap	1016-3		
11	LF	40	Down Drain	1017-2		
12	LF	12	Corrugated Metal Pipe	1018-2		
13	LF	300	Culvert Cleaning	1019-3		
14	TN	35	Processed Miscellaneous Base	1020-4		
15	TN	70	AC Pavement Repair	1021-4		
16	CY	90	Slurry Cement	1022-3		
17	LF	100	AC Dike	1023-4		
18	EA	5	Object Marker	1024-2		
19	SF	3,050	Hydroseeding	1025-4		
20	LF	80	Portland Cement Concrete Curb	1026-3		
21	CY	4	Minor Concrete	1027-4		
22	LS	1	Removal of Existing & Installation of New Guardrail	1028-3		
23	LF	43	42" Reinforced Concrete Pipe Culvert	1029-4		
24	TN	5	AC Miscellaneous Paving	1030-3		
			Total Amount Bid			

Bid Table is shown here for informational purposes.

Bid Table shall be filled out by Bidders using the Bonfire website. Bidders will access the Schedule of Work and Prices on the Bonfire website and input their Unit Prices.

1029 42" REINFORCED CONCRETE PIPE CULVERT

1029-1 SCOPE

This item shall consist of construction of 42" Reinforced Concrete Pipe Culvert including trench preparation and all related joints and connection to the upstream and downstream walls, and other appurtenances as shown on the Plans and shall conform to provisions in Section 207-2, "Reinforced Concrete Pipe" and Section 306, "Open Trench Conduit Construction" of the SSPWC and these Special Provisions.

1029-2 CONSTRUCTION MATERIALS

Reinforced Concrete Pipe (RCP) shall be at least Class II and sized according to the Plans.

1029-3 CONSTRUCTION METHODS

Reinforced Concrete Pipe culvert installations shall comply with special bedding and backfill requirements as shown on the Plans, Standard Plan A62D, and these Special Provisions.

1029-3.1 TRENCHING & BEDDING

The RCP culvert sections may be placed in a shored trench or open cut. All trenches shall have a combination of slopes conforming to CAL/OSHA requirements. Trench bottoms shall be prepared immediately preceding the installation of the RCP culvert.

The minimum thickness of bedding or base material is 6-inches. Maximum rock gradation is to be $\frac{3}{4}$ ". Bedding should be constructed to provide uniform support for the full length and width of each section. This may be accomplished by placing on top of the base material, a 2-inch minimum thickness leveling course consisting of fine granular material graded as required.

1029-3.2 REINFORCED CONCRETE PIPE LAYING

RCP culvert shall be laid to the lines and grades as shown on the plan. RCP culvert shall not be placed in water or when the trench or weather is unsuitable for such work. Grades and alignment shall be established in the trench by conventional survey techniques, or by use of a laser. A laser or string line shall be established in the trench along the centerline of the proposed RCP culvert, said line being used to determine the horizontal and vertical location of each joint of RCP culvert.

1029-3.3 CEMENT SLURRY FOR PIPE BACKFILL

This work consists of cement and sand slurry to side fill the haunch area of the pipe in trench as shown on Plans and shall be performed in accordance with the Standard Specifications, State of California Department of Transportation Standard Specifications (SSS) Section 19 and these Special Provisions.

Cement slurry shall be placed in the trench against undisturbed soil and shall be placed in a manner that will prevent floating or shifting of the pipe. Trenches shall be backfilled with a 2-sack cement slurry from the top of the bedding up to the springline or horizontal centerline of the pipe. 2-sack cement slurry shall consist of 188 pounds (2 bags) of cement for each cubic yard of sand.

Contractor is cautioned to avoid floating the pipe when cement slurry is placed under the haunches of the pipe.

1029-4 MEASUREMENT & PAYMENT

Payment for 42" Reinforced Concrete Pipe Culvert will be made at the contract price per linear foot. Such payment shall be considered full compensation for furnishing all labor, materials, equipment, tools, including excavation, bedding, pipe placement and backfill, and incidentals necessary to complete the work.

1030 AC MISCELLANEOUS PAVING

1030-1 SCOPE

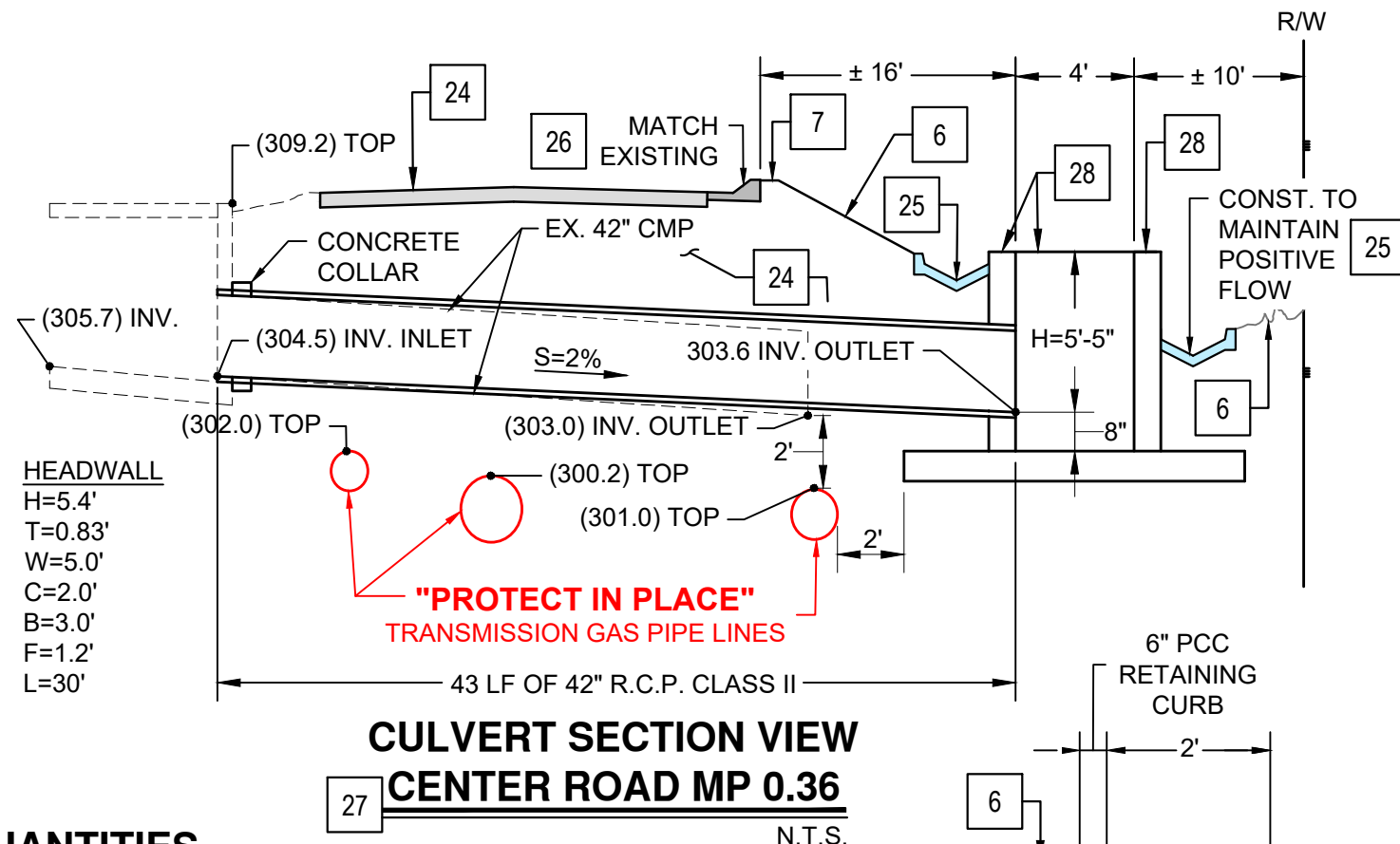
Miscellaneous Paving shall include resurfacing existing asphalt drainage aprons and swales contiguous to the resurfacing, repairing existing roadway as directed by the Engineer, and feathering asphalt concrete to maintain surface drainage patterns at locations directed by Engineer. The work shall include Roadway Preparation and shall be in accordance with the Plans, the Standard Specifications, and these Special Provisions.

1030-2 MATERIAL

Asphalt concrete for Miscellaneous Paving shall be D2-PG 64-10 in accordance with 203-6 of the Standard Specifications. The Contractor may substitute a paving asphalt mix upon approval of the Engineer. A minimum of 5.5% Asphalt Binder content is set for this project.

1030-3 MEASUREMENT & PAYMENT

Payment for AC Miscellaneous Paving, complete in place, will be made at the contract unit price per ton. Such payment shall be considered full compensation for furnishing all labor, materials equipment, tools, and incidentals necessary to complete the work.

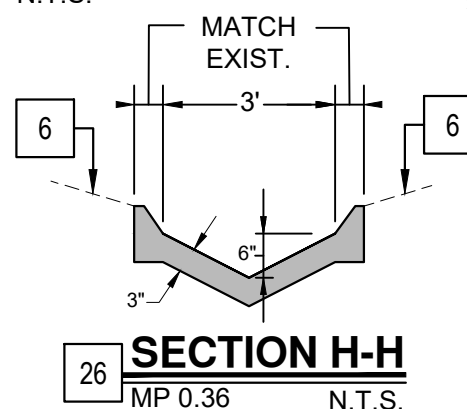
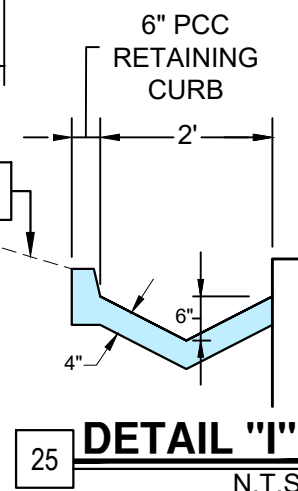
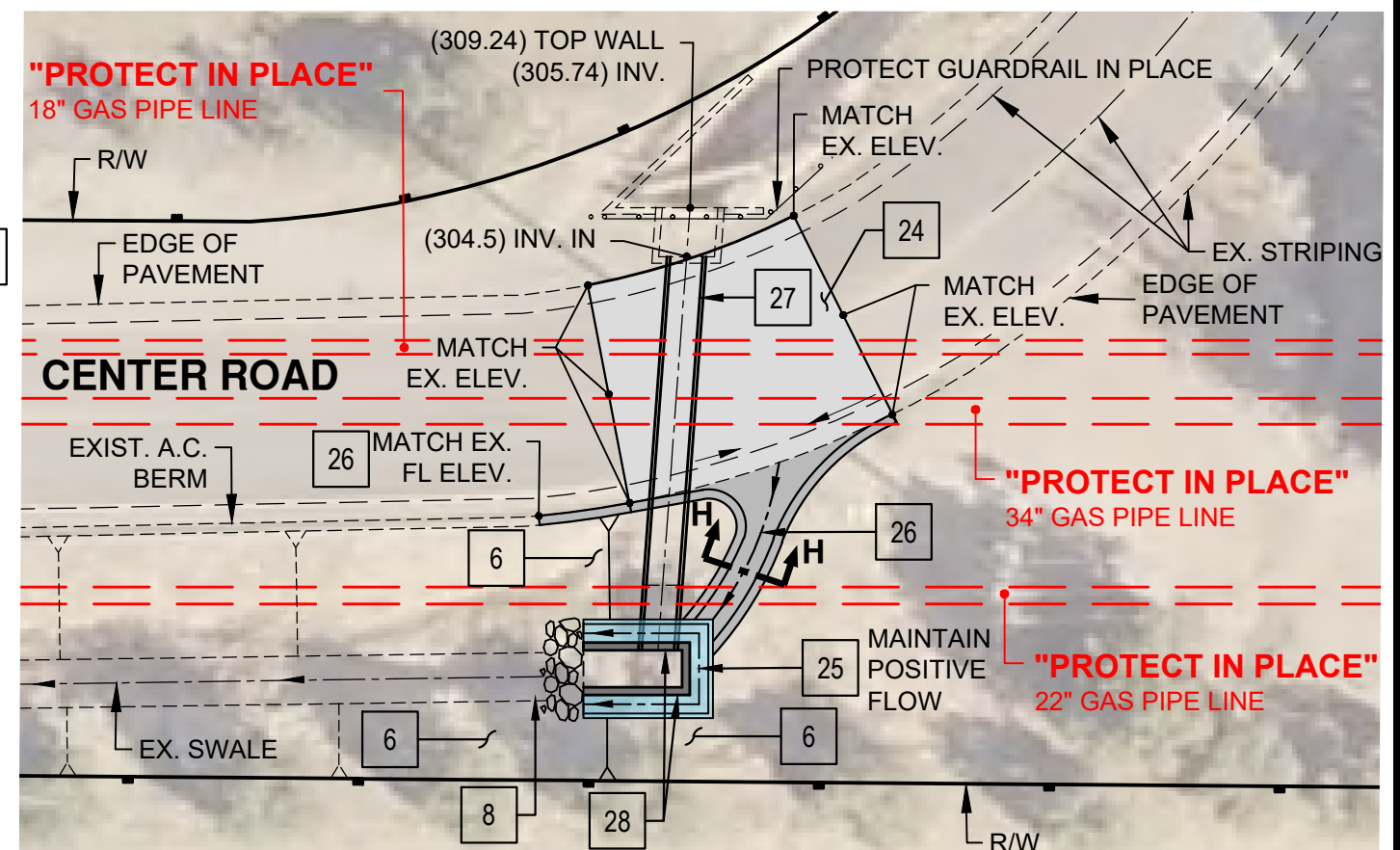


QUANTITIES

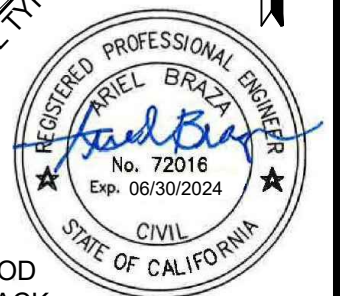
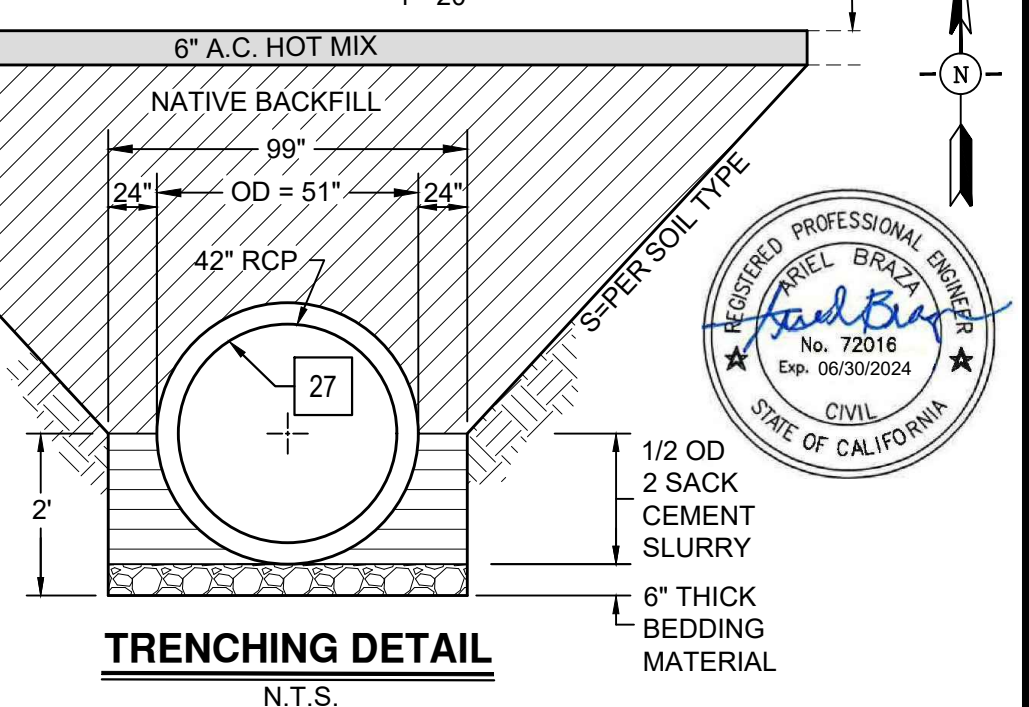
ROAD NAME	42" R.C.P. (LF)	6" A.C. Overlay (TN)	Concrete Collar (EA)	Misc. A.C. 3" Thick (TN)	Class 3 Rip-Rap (TN)	Headwall (EA)	Object Marker (EA)	P.C.C. Swale (CY)
Center Road (MP 0.36) Addendum No. 1	43	25	1	5	15	1	1	1

CONSTRUCTION NOTES

- REGRADE SLOPE AT 1:1 MAX. AT 90% COMPACTION.
- INSTALL OBJECT MARKER PER DETAIL SHOWN ON SHEET 8.
- CONSTRUCT CLASS 3 RIP-RAP WITH SYNTHETIC FILTER FABRIC. 11' x 4' X 4.25' D.
- RECONSTRUCT PAVEMENT SECTION PER TRENCHING DETAIL HEREON.
- CONSTRUCT 2' WIDE P.C.C. SWALE PER DETAIL "I" HEREON.
- CONSTRUCT 3' WIDE SPILLWAY AND A.C. BERM (MISC. A.C) PER SECTION H-H HEREON.
- REMOVE AND DISPOSE EXISTING 42" CMP. INSTALL 43 LF OF CLASS II 42" R.C.P AND CONCRETE COLLAR.
- INSTALL PIPE CULVERT HEADWALL, PER CALTRANS STD. PLAN D89B, CASE III, MODIFIED AS SHOWN. H=PER PLAN.



PLAN VIEW MP 0.36



ADDENDUM NO. 1

DESIGNED AB/JP
DRAWN JH
CHECKED GF
APPROVED G.L.

COUNTY OF VENTURA
PUBLIC WORKS AGENCY
ROADS & TRANSPORTATION

SPEC. NO.
RD24-04
PROJ. NO.
50650

COUNTYWIDE STORM DRAIN REPAIRS
CENTER SCHOOL ROAD MP 0.36
LAT: 34.27288 LONG:-119.09315

SHEET 9A
OF 9A
DRAWING NO.
116578