

Attachment 1 - Best Rock Revised Plan
May 2023

This revised Reclamation Plan for the remaining portions of the former Best Rock mining site provides controlled drainage into a sedimentation basin, erosion control and reseeding of areas subject to reclamation grading. The proposed revised Reclamation Plan stabilizes portions of the property that do not have adequate vegetative growth, reduces slope gradients within the central portion of the site, reduces the potential for erosion, and establishes vegetation on all areas graded as an element of the reclamation activities. Consistent with the approved Reclamation Plan on file, the end use for the site is open space.

This Plan contemplates 113,000 cubic yards of balanced cut and fill, establishment of a sedimentation basin with rip rap outlet and seeding of the site with native species. Approximately 18.5 acres will be treated to meet reclamation objectives. It is intended that the sedimentation basin will eventually fill with sediment while vegetation is established on the mined lands. It is anticipated that the level of offsite sediment transport will approximate natural conditions in the long term.

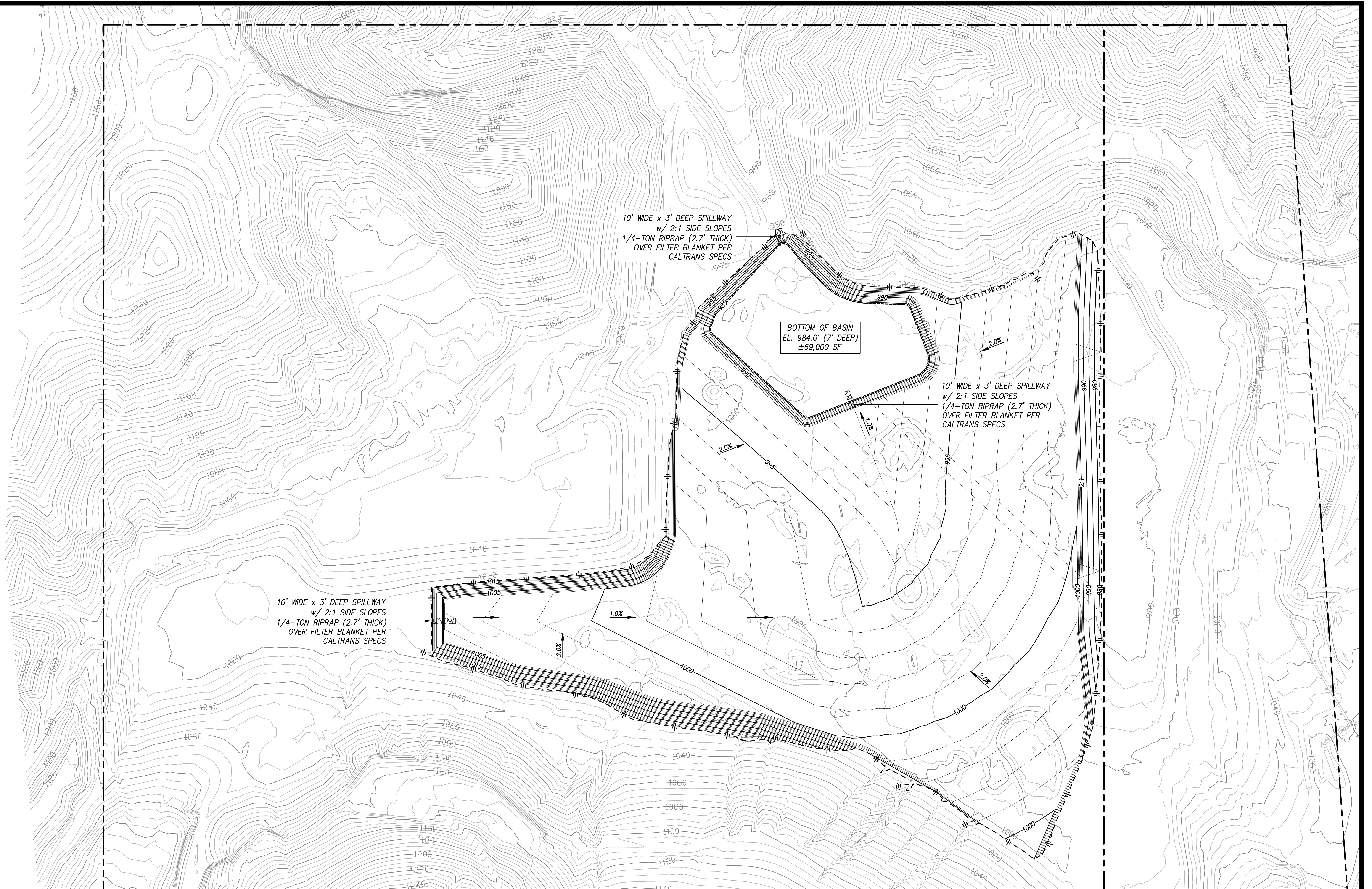
Grading operations will be limited to creating a gently sloping ground surface over the majority of the reclamation area. Final slopes of 1 to 2 percent will direct drainage to a sedimentation basin located in the northern portion of the project area. The outlet for the basin will be armored with rip rap to control channel erosion. Some slopes will be left in current condition for end use of open space and will have no adverse effect on offsite lands.

The portion of the reclamation area that is within the adjacent Grimes Rock facility is currently about 10 feet in elevation below the lands on the west (within the Best Rock reclamation area). Based on the approved Grimes Rock Reclamation Plan, the area will be graded by Grimes Rock to tie in with the Best Rock reclamation grading.

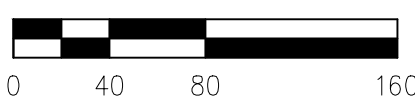
The list of species to be used with revegetation has been reduced to meet budget limitations. Only California native species are planned for seeding at the listed seeding rates:

Scientific Name	Common Name	Lbs PLS/ac
<i>Artemisia californica</i>	California Sagebrush	3
<i>Erigonum fasciculatum</i>	California buckwheat	2
<i>Baccharis pilularis</i>	Coyote brush	0.5
<i>Encelia californica</i>	California brittlebush	2
<i>Acmispon glaber</i>	Deerweed	5
<i>Bromus carinatus</i>	California brome	2

The species identified for revegetation are common to the project area and should quickly colonize disturbed lands within the reclamation area. Hydroseeding will be used to apply the seed to all areas subject to active revegetation efforts.

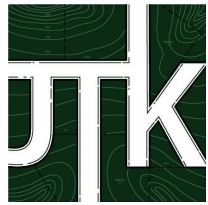


SCALE: 1" = 80'



EARTHWORK QUANTITIES
113,100 CY CUT / 113,100 CY FILL = BALANCED

CONCEPT GRADING
BEST ROCK



Job: Best Rock10-31-22 Rev1
Units: Ft-CY
Mon Oct 31, 2022 13:36:50 Page 1

Volume Report
Design vs Existing

	Total	Cut	Area Fill	OnGrade	Volume Cut	Fill	Comp/Ratio Cut	Fill	Compact Cut	Fill	Export -Import	Change Per 0.1 ft
Cut 1	102,444	101,145	843	456	37,103	15	1.00	1.00	37,103	15	37,088	379
Cut 2	156,556	149,226	5,826	1,504	20,096	173	1.00	1.00	20,096	173	19,923	580
Cut 3	196,273	190,959	4,236	1,078	53,133	227	1.00	1.00	53,133	227	52,906	727
Cut 4	13,796	13,724	16	56	2,709	0	1.00	1.00	2,709	0	2,709	51
Cut Sub:	469,069	455,054	10,921	3,094	113,041	415			113,041	415	112,626	1,737
Fill A	337,598	1,432	331,058	5,108	31	116,503	1.00	1.00	31	116,503	-116,472	1,250
Regions Total	806,667	456,486	341,979	8,202	113,072	116,918			113,072	116,918	-3,846	2,987

