

EXHIBIT 8

Distance Between Crossings on Federal Lands in
the Los Padres Forest Area and Nearest Wildlife
Crossing Structure Included in the Proposed
Ordinance

Proposed Ordinance Establishing Setbacks from 14
Wildlife Crossing Structures in the Northern Portion
of the Ventura County Unincorporated Area
Case No. PL19-0088

This page is intentionally left blank.

Exhibit 8: Distance Between Crossings on Federal Lands in the Los Padres Forest Area and Nearest Wildlife Crossing Structure Covered by the Proposed Ordinance Case PL19-0088

Background: The Board directed staff in 2019 to develop regulations for development near wildlife crossing structures (WCS) on private property in the northern portion of the county unincorporated area. The Board’s directive was specific about the regulation on private lands because federal public lands are not under the County’s jurisdiction. Figure 1 below illustrates the location of the 14 WCS that are the subject of the Proposed Ordinance, as well as the location of the nearest six crossings on federal land (FLC). Table 1 below provides the approximate distance between each FLC and the nearest WCS that is covered by the Proposed Ordinance.

Cuyama River Valley Area Crossings

FLC Structures 52-0121 and 52-0120 are located approximately 0.8 and 0.3 miles respectively from WCS 52-088 in the far north of the Cuyama River Valley area (Table 1). The types of wildlife species’ groups associated with the habitats in the area are reptiles (snake, lizards), small mammals (squirrels, voles, mice), low-mobility medium sized mammals (hare, raccoon, etc.), and high-mobility mammals (coyotes, bobcat, deer). As shown in Figure 2 below, the FLCs are separated by an older mountain range that has eroded over time into the Cuyama River. Only high-mobility mammals would be able to potentially access the FLCs from the nearest WCS due to the terrain and spacing of the structures, whereas low-mobility wildlife would only be able to access the closest structure in their limited range. In addition, the direction of the mountain erosion between the structures naturally funnels wildlife towards the Cuyama River and Rt. 33 not to the adjacent valleys where the next structures are located along Rt. 33. Therefore, it is unlikely that the same wildlife would use the three structures interchangeably (Figure 2 below).

Wheeler Springs Gorge Area Crossings

The other four FLC Structures 52 0077, 52 0076, 52 0170, and 52 0074 are grouped together north from the closest WCS 52 0067 (Figure 3). There are no proposed WCS on private land interspersed among them. The closest FLC to WCS 52 0067 ranges from approximately 1.5 to 11.8 miles (Table 1). All the proposed WCS located south of the four FLCs within this portion of the Rt. 33 corridor serve a range of wildlife (e.g., large mammals, high-mobility mammals, low-mobility medium sized mammals, small mammals, amphibians, reptiles). The steep mountains, narrow valley topography, causes wildlife to use all the WCS as they move and migrate within close proximity of winding Rt.33 with high-speed vehicle traffic.¹

Table 1: Distances between crossings on federal lands and closest wildlife crossing structure in Proposed Ordinance.

Federal Land Crossings (FLC)	Nearest WCS Covered by Proposed Ordinance	Distance Between Crossings in Miles	Area of Los Padres National Forest
52 0121	52 0088	0.8	Cuyama River
52 0120	52 0088	0.3	
52 0442	52 0067	11.8	Tule Creek
52 0076	52 0067	2.9	Wheeler Springs
52 0170	52 0067	2.6	
52 0074	52 0067	1.5	

¹ 2021 Caltrans Data Annual Average Daily Traffic (AADT) 590 – 1200. Los Padres Forest Boundary to Wheeler Springs.

Exhibit 8: Distance Between Crossings on Federal Lands in the Los Padres Forest Area and Nearest Wildlife Crossing Structure Covered by the Proposed Ordinance Case PL19-0088

Figure 1: Wildlife Crossing Structure Locator Map with the Six Crossing Structures on Federal Lands included.

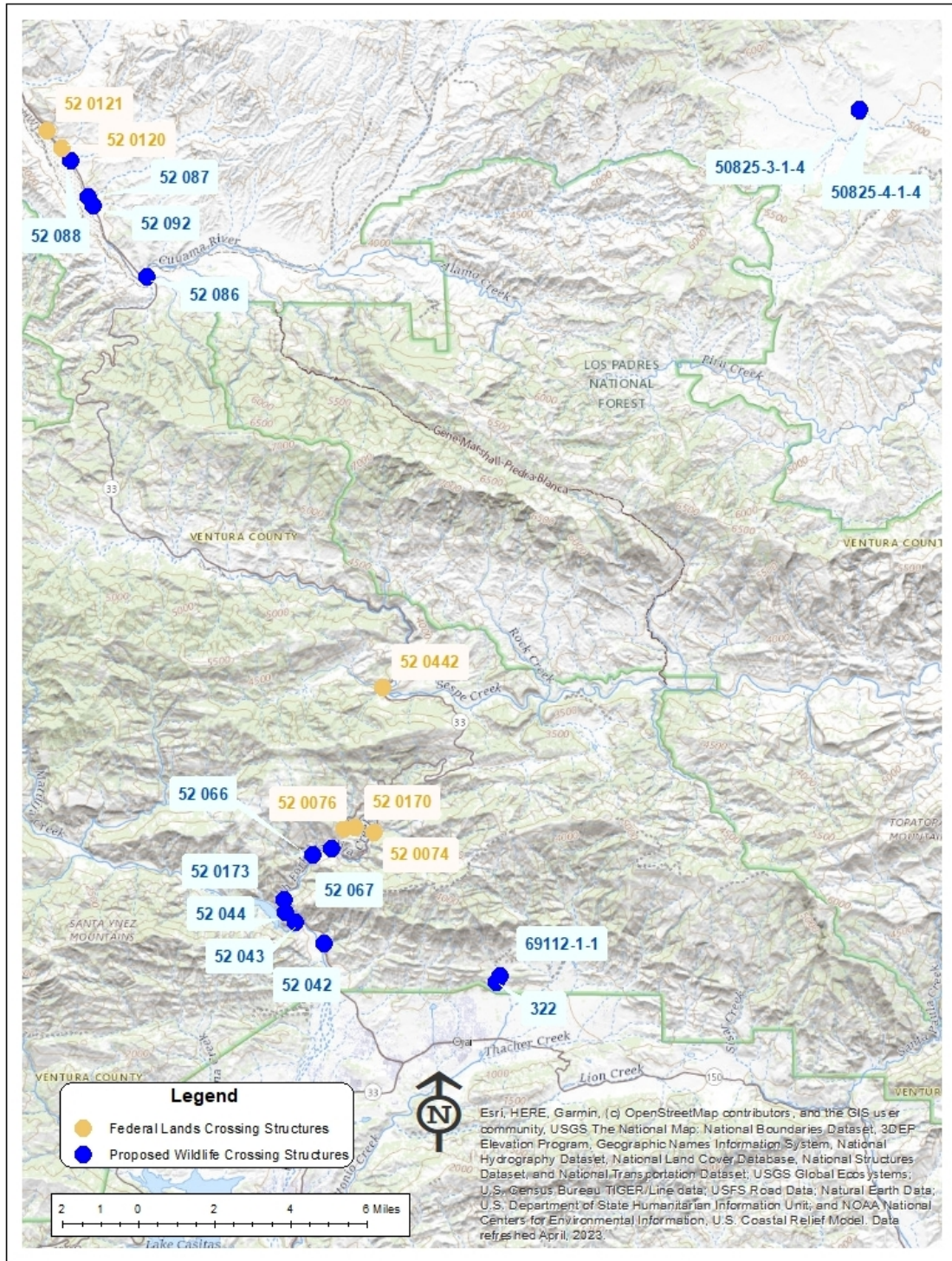


Exhibit 8: Distance Between Crossings on Federal Lands in the Los Padres Forest Area and Nearest Wildlife Crossing Structure Covered by the Proposed Ordinance
Case PL19-0088

Figure 2: Aerial View of Topology Between WCS 52 088 & Structures on Federal Land in the Cuyama River Valley.

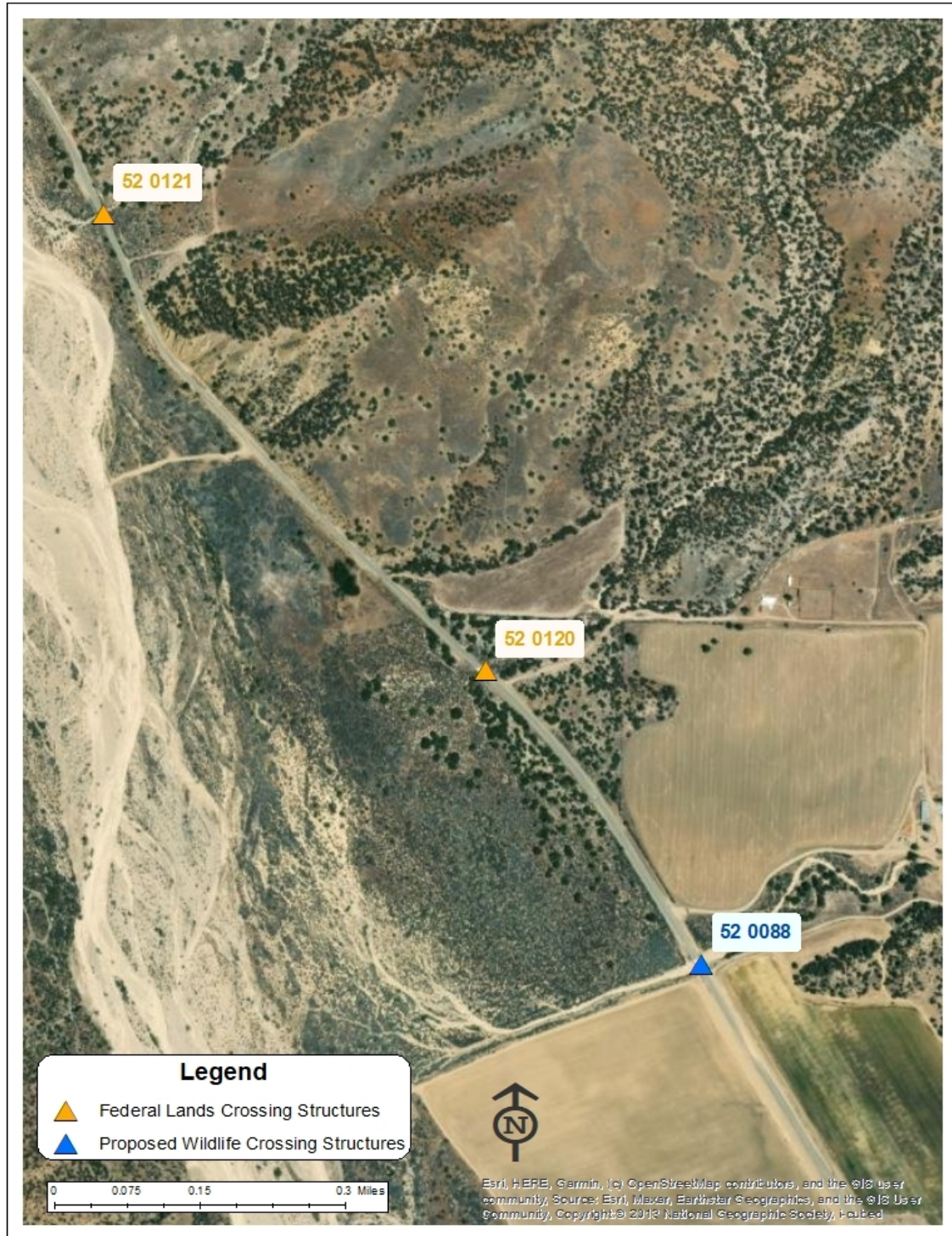


Exhibit 8: Distance Between Crossings on Federal Lands in the Los Padres Forest Area and Nearest Wildlife Crossing Structure Covered by the Proposed Ordinance
Case PL19-0088

Figure 3: Topology Map Showing Crossing Structures on Federal Lands North of Matilija Canyon & Wheeler Springs.

