

### **Segment 1 (City of Ventura to City of Santa Clarita):**

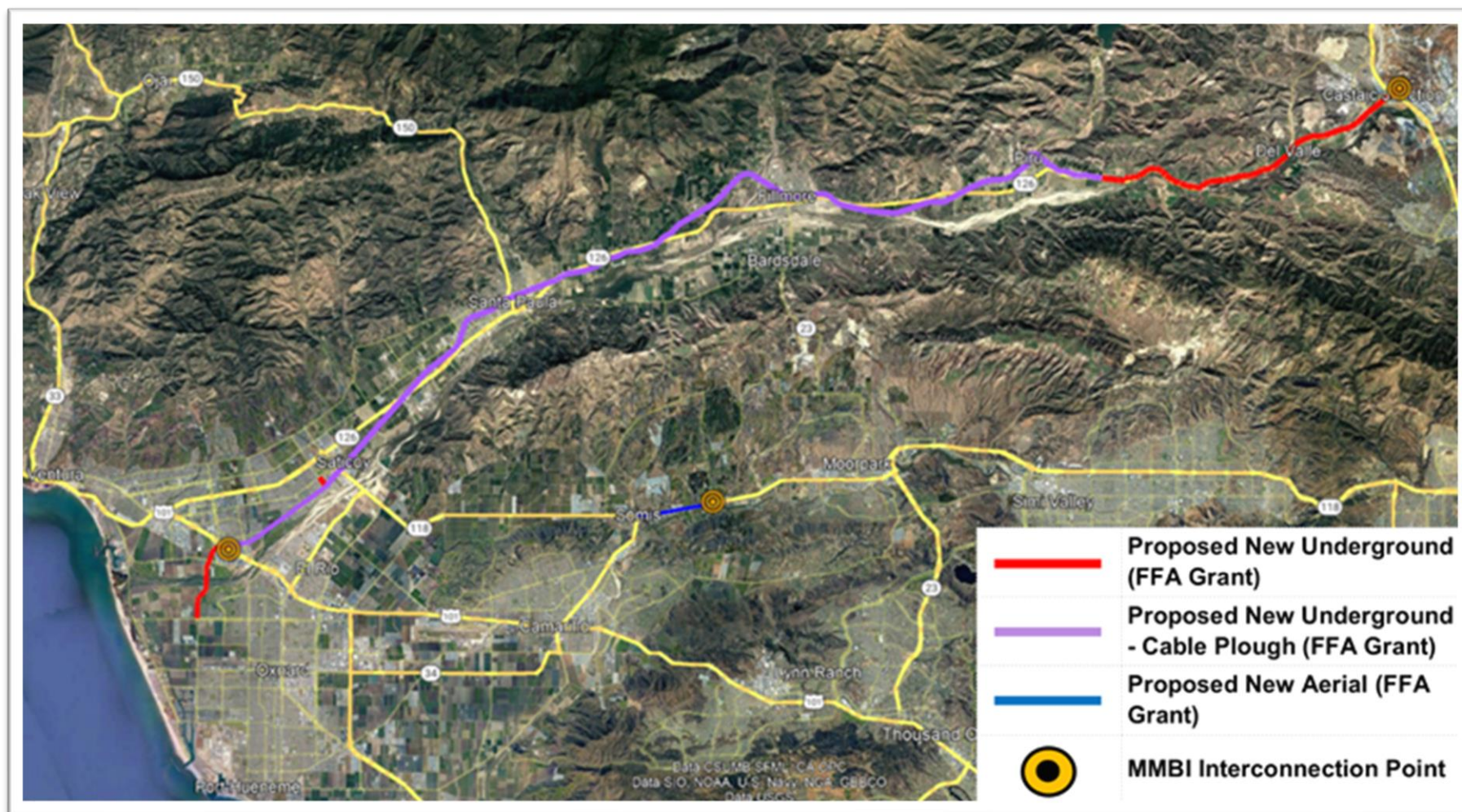
Commencing at the interconnection point at the intersection of W. Gonzales Rd. and N. Victoria Ave. Proceed North along N. Victoria Ave for approximately 2.31 miles terminating at the intersection of S. Victoria Ave. and the VCTC right-of-way. Proceed East along VCTC right-of-way for approximately 3.8 miles terminating at the intersection of VCTC right-of-way and S. Saticoy Ave. Proceed Northwest along S. Saticoy Ave. for approximately 0.3 miles terminating at the intersection of S. Saticoy Ave. and Telephone Rd. Proceed Northeast along Telephone Rd. for approximately 0.52 miles terminating at the intersection of Telephone Rd. and HWY 118. Proceed Southeast along HWY 118 for approximately 0.23 miles terminating at the intersection of HWY 118 and Nardo St. Proceed Northeast along Nardo St. for approximately 0.13 miles terminating at the intersection of Nardo St. and Alelia Ave. Proceed Northwest along Alelia Ave for approximately 0.04 miles terminating at the intersection of Alelia Ave and VCTC right-of-way. Proceed Northeast along VCTC right-of-way for approximately 2.64 miles terminating at the intersection of VCTC right-of-way and Todd Rd. Proceed Northwest along Todd Rd. for approximately 0.07 miles terminating at the intersection of Todd Rd. and VCTC right-of-way. Proceed Northeast along VCTC right-of-way for approximately 3.11 miles terminating at the intersection of VCTC right-of-way and N. Steckel Dr. Proceed Southeast on N. Steckel Dr. for approximately 0.03 miles terminating at the Community Senior Center. Proceed Northeast along W. Main St. for approximately 0.71 miles terminating at the corner of E Main St. and S. 4<sup>th</sup> St. Proceed Northwest for approximately 0.01 miles, crossing E. Main St., terminating on VCTC right-of-way. Proceed Northeast on VCTC right-of-way for approximately 0.25 miles terminating at the intersection of VCTC right-of-way and E. Santa Barbara St. Proceed Northeast along E. Santa Barbara St. for approximately 0.6 miles terminating at the intersection of Santa Barbara St and N. 12<sup>th</sup> St. Proceed Northwest on N. 12<sup>th</sup> St. for approximately 0.04 miles terminating at the intersection of N. 12<sup>th</sup> St. and VCTC right-of-way. Proceed Northeast on VCTC right-of-way for approximately 0.03 miles. Proceed 0.01 miles Southeast along VCTC right-of-way. Proceed Northeast along VCTC right-of-way for approximately 1.68 miles. Proceed Southeast, crossing E. Telegraph Rd., for approximately 0.02 miles terminating at VCTC right-of-way. Proceed Southwest along VCTC right-of-way for approximately 0.01 miles terminating at the intersection of E. Telegraph Rd. and Willard Rd. Proceed South along Willard Rd. for approximately 0.04 miles terminating at the intersection of Willard Rd. and VCTC right-of-way. Proceed Northeast on VCTC right-of-way for approximately 7.8 miles terminating at the intersection of VCTC right-of-way and Central Ave. Proceed South along Central Ave. for approximately 0.12 miles terminating at the intersection of Central Ave. and HWY 126. Proceed Northeast along HWY 126 for approximately 1.14 miles terminating at the VCTC right-of-way. Proceed Southeast along VCTC right-of-way for approximately 6.30 miles terminating at the intersection of VCTC right-of-way and Center St. Proceed East along and across Center St. for approximately 0.35 miles terminating at VCTC right-of-way. Proceed along VCTC right-of-way for approximately 2.0 miles to the intersection of HWY 126 and the VCTC right-of-way near the approximate location of the Rancho Camulos Museum. Proceed along HWY 126 Northeast for approximately 8.82 miles terminating at the intersection of VCTC right-of-way and Commerce Center Dr. Proceed Southeast on Commerce Center Dr. for approximately 0.19 miles, crossing HWY 126 and terminating at the intersection of Commerce Center Dr. and Henry Mayo Dr. Proceed Northeast along Henry Mayo Dr. for approximately 0.75 miles terminating at the intersection of Henry Mayo Rd. and The Old Rd. Proceed Southeast along The Old Rd. for approximately 1.27 miles terminating at the intersection of The Old Rd. and Rye Canyon Rd.

Proceed Northeast on Rye Canyon Rd. for approximately 0.1 miles to the Santa Clarita interconnection point.

**Segment 2 – Somis Aerial Deployment:**

Commencing at the interconnection point at the intersection of HWY 118 and Donlon Rd, proceed East along HWY 118 for approximately 2.25 miles terminating at interconnection point at the corner of HWY 118 and Balcom Canyon Road.

## PHASE 1 COUNTY NETWORK DESIGN





**Depiction of Segment 1 (Proceeding West to East):**

















**Depiction of Segment 2:**

