

**COUNTY OF VENTURA
PUBLIC WORKS AGENCY**

Date: September 19, 2024

To: All Prospective Bidders

From: Gregg Strakaluse
Director, Public Works Agency

Addendum No. 2

Subject: Project Name: SANTA CLARA RIVER LEVEE DOWNSTREAM OF
UPRR (SCR-3) – PHASE 2
Specification No.: WP25-05
Project No.: 82045/82047
Bids to be Opened: **October 3, 2024**

Make the following modifications to the bidding documents for the subject project:

1. Replace the Project Information with the attached revised Project Information.
2. Replace Sheet 19, Sheet Pile Details No.1 with attached Revised sheet 19, Sheet Pile Details No.1.
3. Revise call out notes on Sheet 23 of 24 of the Construction Plans stating, "AZ 19-700 Sheet Pile" with the following call out notes: "NZ 28 Sheet Pile."
4. On Sheets 19, 21, and 22, the sheet pile interlock details and 90-degree corner sheet pile connections shown as ball and socket shall be revised with NZ 28 interlocks for sheet pile connections and corner connections per details shown on the manufacturer web site as Larsson interlock connections.
5. Add the following to the end of subsection 1000-1, SCOPE.

Santa Clara River Levee Downstream UPRR (SCR-3) Phase 2 project shall meet the federal agencies, including FEMA requirement of the Build America, Buy America Act (BABAA).

Acknowledgment of this addendum is required on the Bonfire website when submitting your bid. Failure to do so may result in the disqualification of your bid.

Approved: 
Gregg Strakaluse, Director

09/23/24
Date Approved

PROJECT INFORMATION

FOR

SANTA CLARA RIVER LEVEE DOWNSTREAM OF UPRR (SCR-3) – PHASE 2

**LOCATED IN
VENTURA COUNTY, CALIFORNIA**

**MAKE BID GUARANTEE TO THE VENTURA COUNTY WATERSHED PROTECTION DISTRICT
USE FORM PROVIDED (SEE PARAGRAPH 9, INSTRUCTION TO BIDDERS).**

SPECIFICATION NO. WP25-05 INCLUDING 66 SHEETS OF PLANS

BIDS WILL BE RECEIVED ELECTRONICALLY UNTIL OCTOBER 3, 2024 AT 2:00 P.M.

AGENCY IS ALLOWED 60 DAYS TO AWARD A CONTRACT (SEE SECTION 1-7.3).

**THE STARTING DATE OF CONTRACT WILL BE 28 CALENDAR DAYS AFTER AWARD OF
CONTRACT (SEE SECTION 6-3.2.1).**

COMPLETION TIME IS 401 WORKING DAYS (SEE SECTION 6-3).

LIQUIDATED DAMAGES ARE \$2,200.00 PER CALENDAR DAY (SEE SECTION 6-9).

CONTRACTOR'S LICENSE CLASSIFICATION REQUIRED IS CLASS A.

LIABILITY INSURANCE CLASS REQUIRED PER SECTION 5-4.2.2 IS L- D.

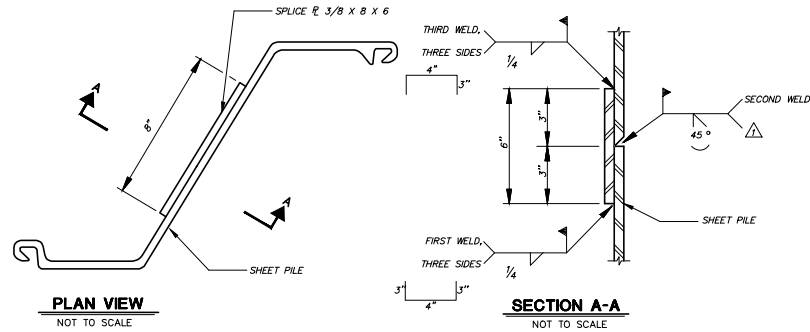
SEE SECTION 1000-16.7 FOR ADDITIONAL INSURANCE REQUIREMENTS.

FEDERAL-AID CONTRACT PROVISIONS ARE NOT INCLUDED IN THESE SPECIFICATIONS.

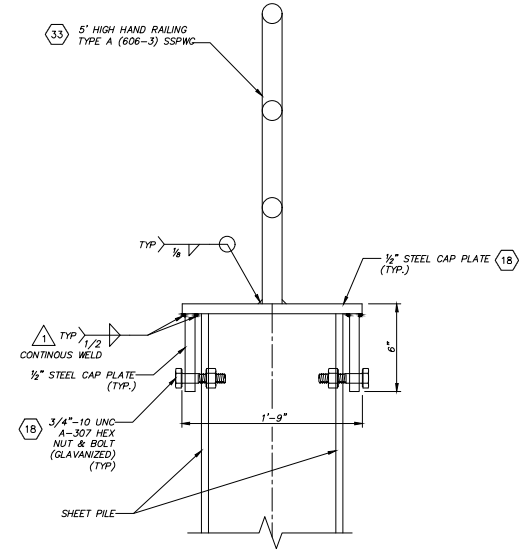
**NON-MANDATORY PREBID MEETING: 10:00 AM on 09/10/2024 at the Ventura County
Government Center, PWA Conference Room 346, 800 S. Victoria Avenue, Ventura,
California. (Section 1000-2)**

NOTES:

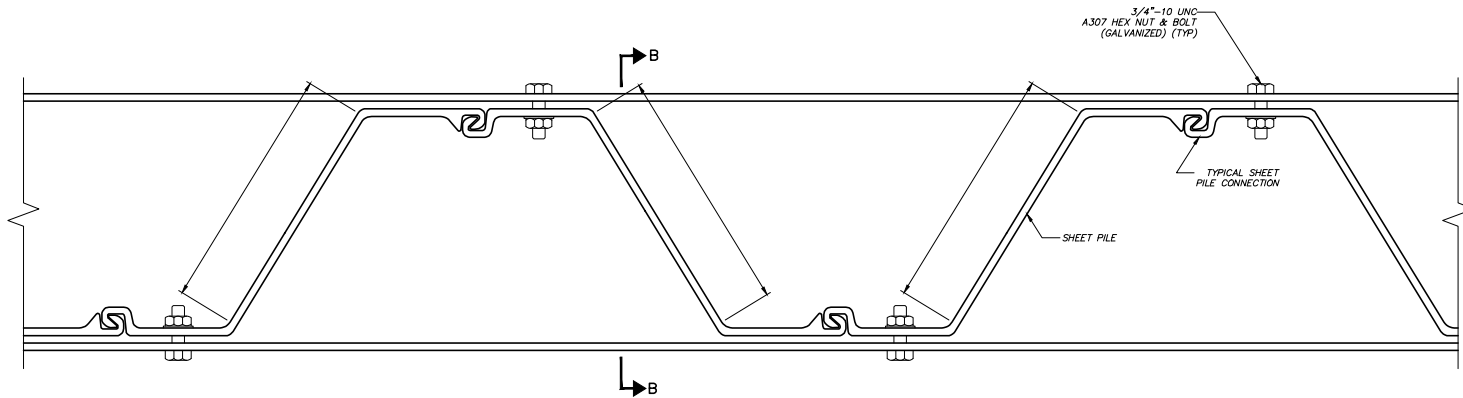
1. GROOVE WELD SHALL EXTEND THE FULL LENGTH OF THE SHEET PILE WEB AND FLANGES EXCLUDING THE INTERLOCKS.



SHEET PILE SPLICE DETAIL
NOT TO SCALE



SECTION B-B
NOT TO SCALE



TYPICAL SHEET PILE PLAN VIEW
NOT TO SCALE



DATE: 9/18/24 106684				K:\PROJECTS\ZONE\SANTALARA\LEVEE\SDNS\SANTALARA\LEVEE_SCR3_P2\DESIGN\DESIGN\DRAWINGS\PERCENT_PLANS\SANTALARA RIVER SCR-3 PHASE 2 06-20-2024\07-SP-6628-5019 REVISE SHEET 18.DWG										REVISED 9/18/2024 -- ADDENDUM 2					
D				 INTERNATIONAL <i>Michael Salley</i>	ME/LN	DESIGNED	CS	DATE	VENTURA COUNTY PUBLIC WORKS AGENCY WATERSHED PROTECTION				SPEC. NO.	SANTA CLARA RIVER LEVEE DOWNSTREAM OF UPRR (SCR-3) - PHASE 2		SHEET	19		
C					CS	TRKIN	CS	DATE					WP25-05			OF	62		
B					CS	CHECKED	CS	DATE					B2045			SHEET PILE DETAILS NO. 1		DRAWING NO.	WPD-2-388
A																			
Δ	REVISION	DESCRIPTION	APP.		DATE	R.C.E.	DATE	DATE											