

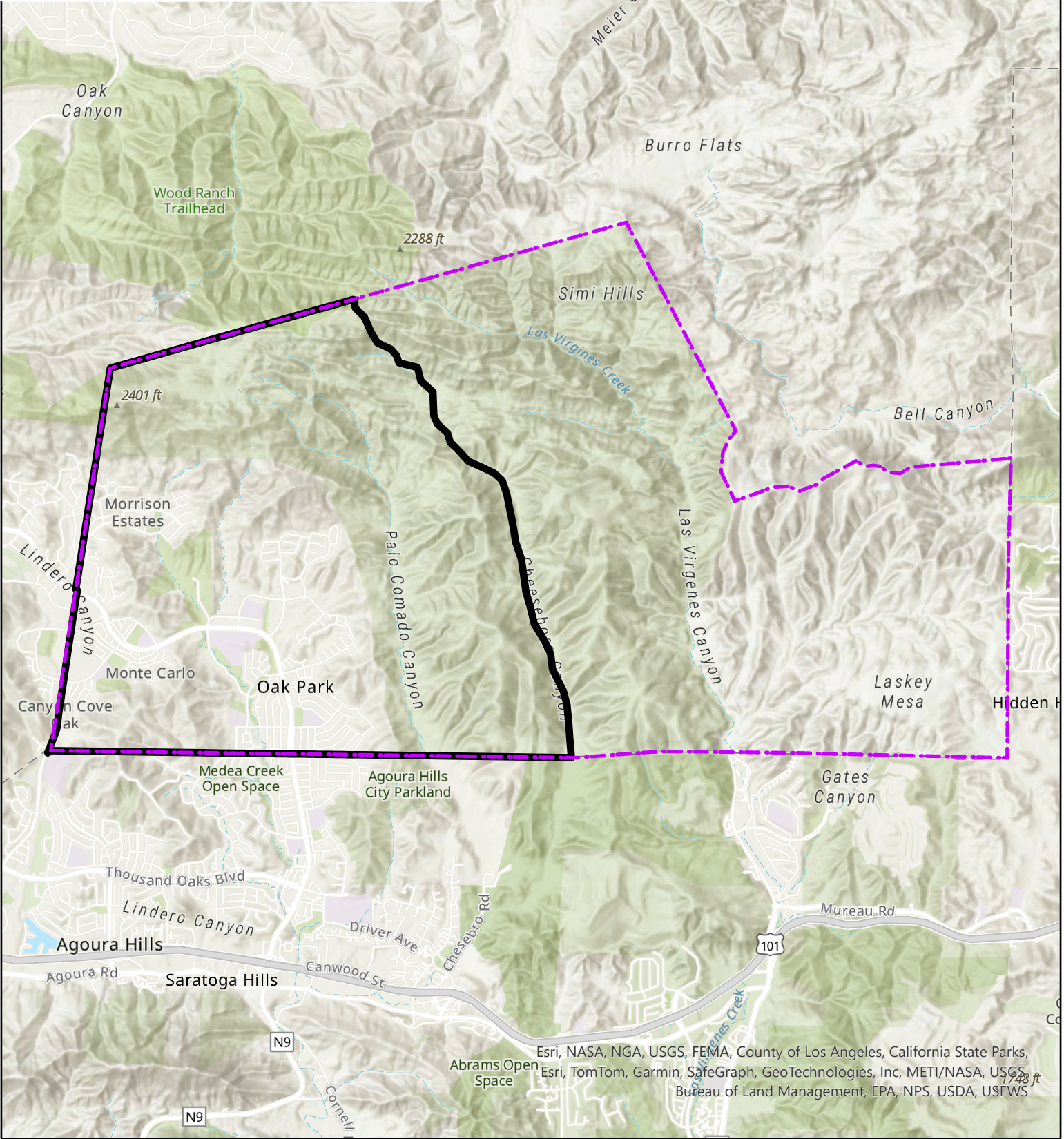


Oak Park 2-001, Oak Park 2-002, Oak Park 2-003,
 Oak Park 2-004, Oak Park 2-005, Oak Park, 2-006,
 Oak Park 2-007, Oak Park 2-008 Oak Park 2-009,
 Oak Park 2-010, Oak Park 2-011, Oak Park 2-012,
 Oak Park 2-013, Oak Park 2-014, Oak Park 2-015,
 Oak Park 2-016, Oak Park 2-017

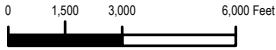
 Existing Oak Park MAC Boundary
 Selected Election Precincts



Ventura County
 Resource Management Agency
 Information Systems GIS Services
 Map created on 4/12/2024



County of Ventura Oak Park Municipal Advisory Council

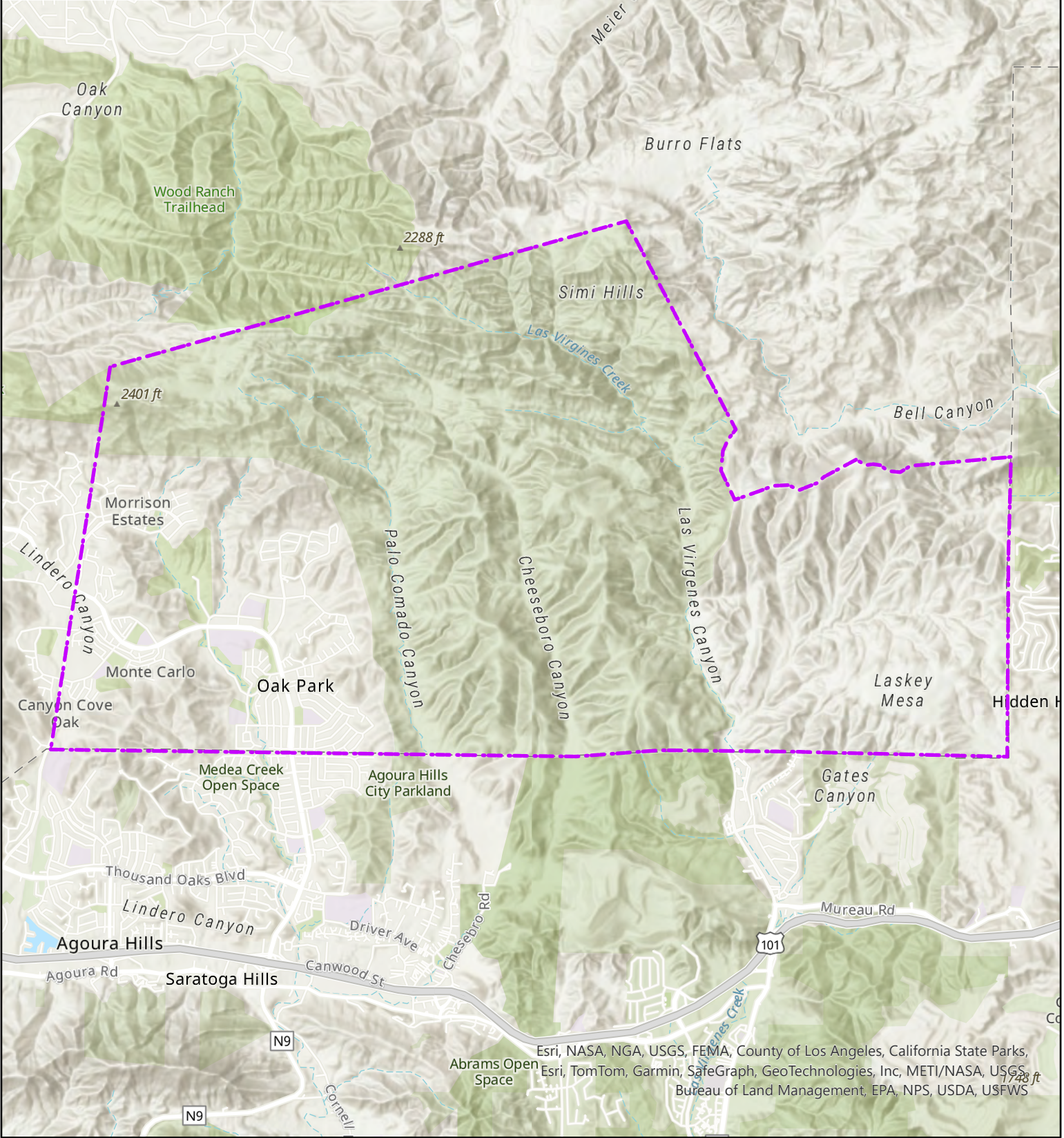


Disclaimer: this map was created by the Ventura County Resource Management Agency Information Systems GIS, which is designed and operated solely for the convenience of the County and related public agencies. The County does not warrant the accuracy of this map and no decision involving a risk of economic loss or physical injury should be made in reliance therein



Oak Park 2-001, Oak Park 2-002, Oak Park 2-003,
Oak Park 2-004, Oak Park 2-005, Oak Park, 2-006,
Oak Park 2-007, Oak Park 2-008 Oak Park 2-009,
Oak Park 2-010, Oak Park 2-011, Oak Park 2-012,
Oak Park 2-013, Oak Park 2-014, Oak Park 2-015,
Oak Park 2-016, Oak Park 2-017

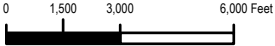
 Selected Election Precincts



Ventura County
Resource Management Agency
Information Systems GIS Services
Map created on 4/12/2024





County of Ventura
**Oak Park Municipal
Advisory Council**

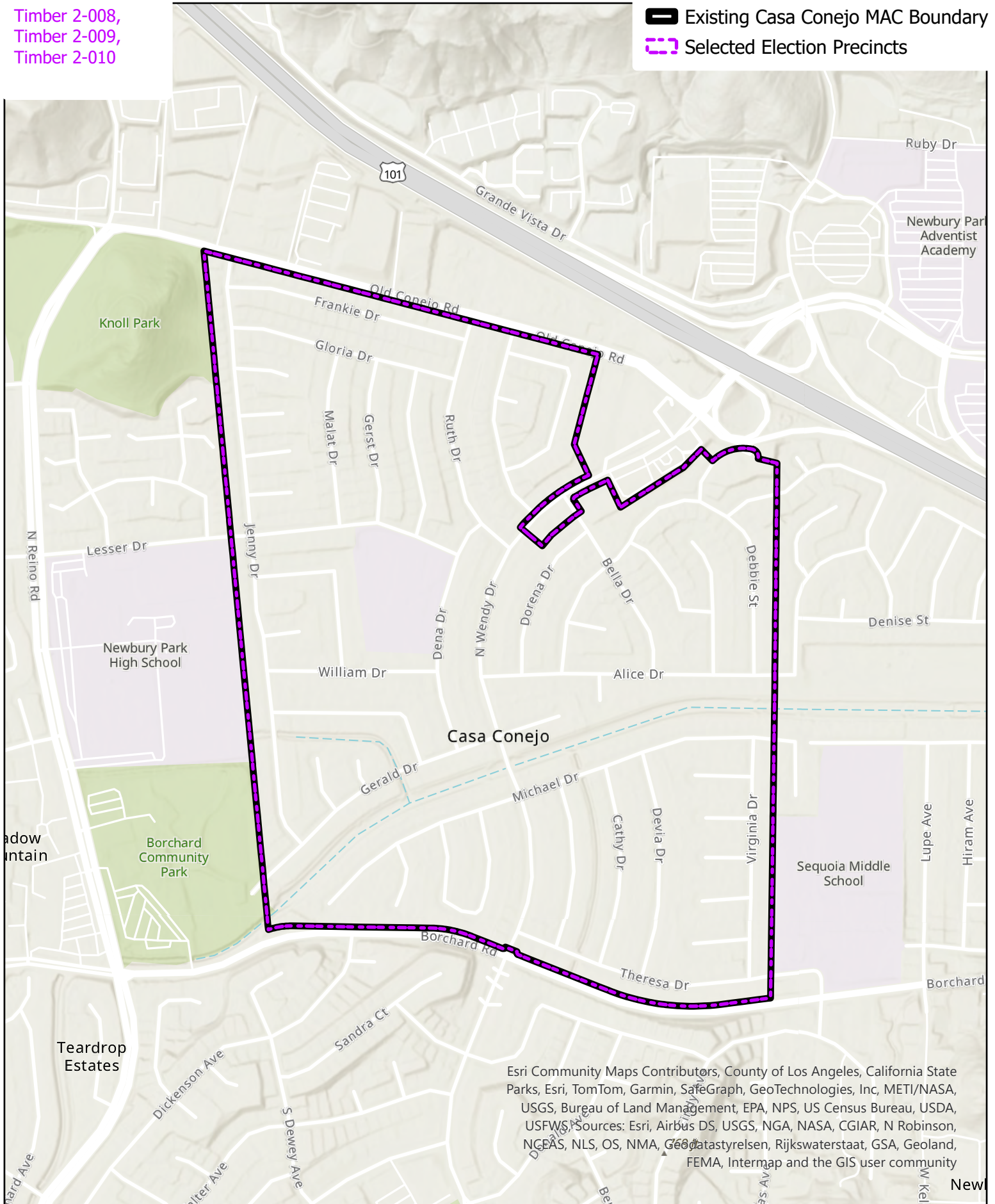


Disclaimer: this map was created by the Ventura County Resource Management Agency Information Systems GIS, which is designed and operated solely for the convenience of the County and related public agencies. The County does not warrant the accuracy of this map and no decision involving a risk of economic loss or physical injury should be made in reliance therein



Timber 2-008,
Timber 2-009,
Timber 2-010

 Existing Casa Conejo MAC Boundary
 Selected Election Precincts



Esri Community Maps Contributors, County of Los Angeles, California State Parks, Esri, TomTom, Garmin, SafeGraph, GeoTechnologies, Inc, METI/NASA, USGS, Bureau of Land Management, EPA, NPS, US Census Bureau, USDA, USFWS, Sources: Esri, Airbus DS, USGS, NGA, NASA, CGIAR, N Robinson, NCEAS, NLS, OS, NMA, GeoDatastyrelsen, Rijkswaterstaat, GSA, Geoland, FEMA, Intermap and the GIS user community



Ventura County
Resource Management Agency
Information Systems GIS Services
Map created on 4/12/2024



County of Ventura Casa Conejo Municipal Advisory Council

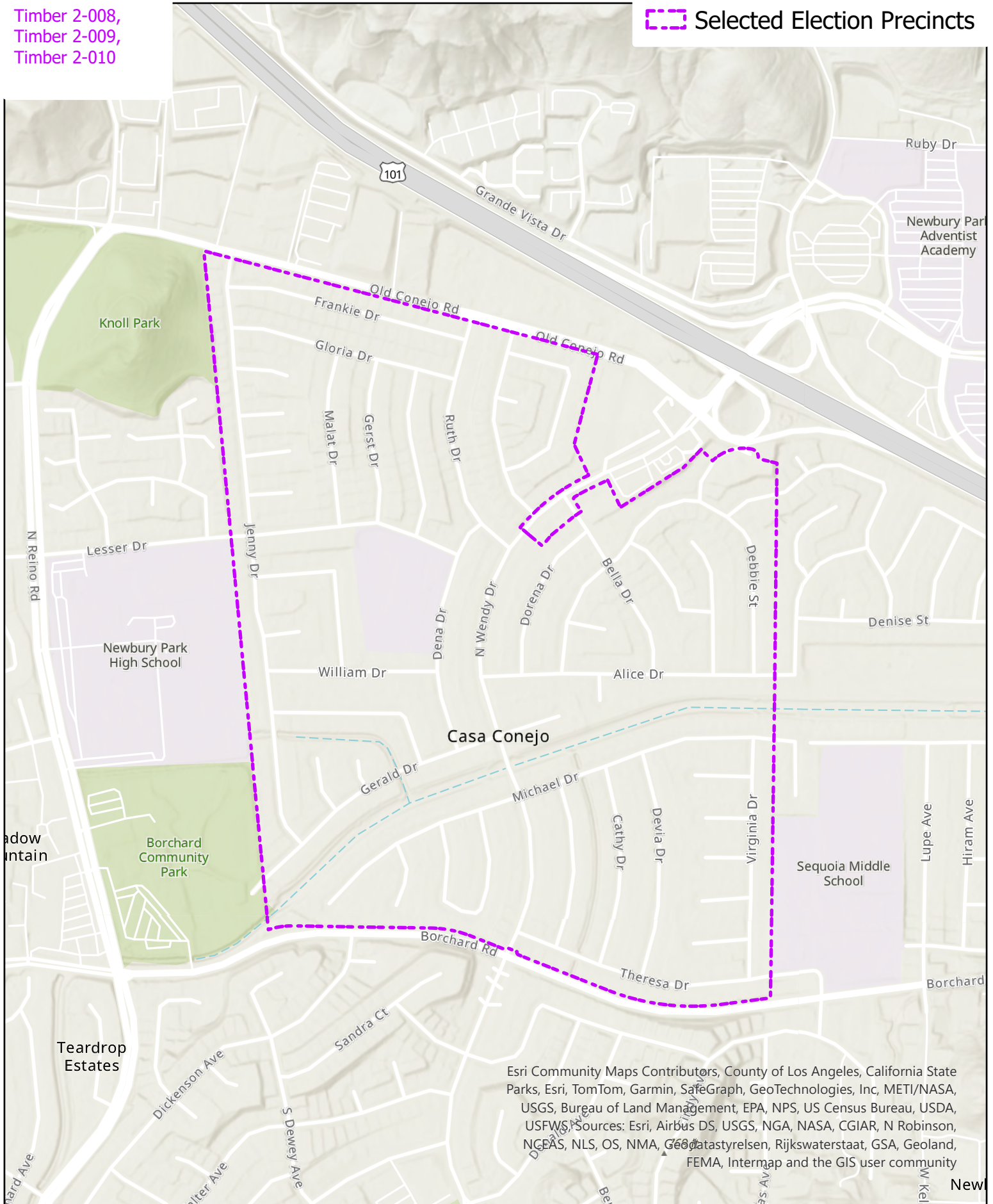
0 200 400 800 Feet

Disclaimer: this map was created by the Ventura County Resource Management Agency Information Systems GIS, which is designed and operated solely for the convenience of the County and related public agencies. The County does not warrant the accuracy of this map and no decision involving a risk of economic loss or physical injury should be made in reliance therein



Timber 2-008,
Timber 2-009,
Timber 2-010

 Selected Election Precincts



Esri Community Maps Contributors, County of Los Angeles, California State Parks, Esri, TomTom, Garmin, SafeGraph, GeoTechnologies, Inc, METI/NASA, USGS, Bureau of Land Management, EPA, NPS, US Census Bureau, USDA, USFWS, Sources: Esri, Airbus DS, USGS, NGA, NASA, CGIAR, N Robinson, NCEAS, NLS, OS, NMA, GeoDatastyrelsen, Rijkswaterstaat, GSA, Geoland, FEMA, Intermap and the GIS user community



Ventura County
Resource Management Agency
Information Systems GIS Services
Map created on 4/12/2024



County of Ventura Casa Conejo Municipal Advisory Council

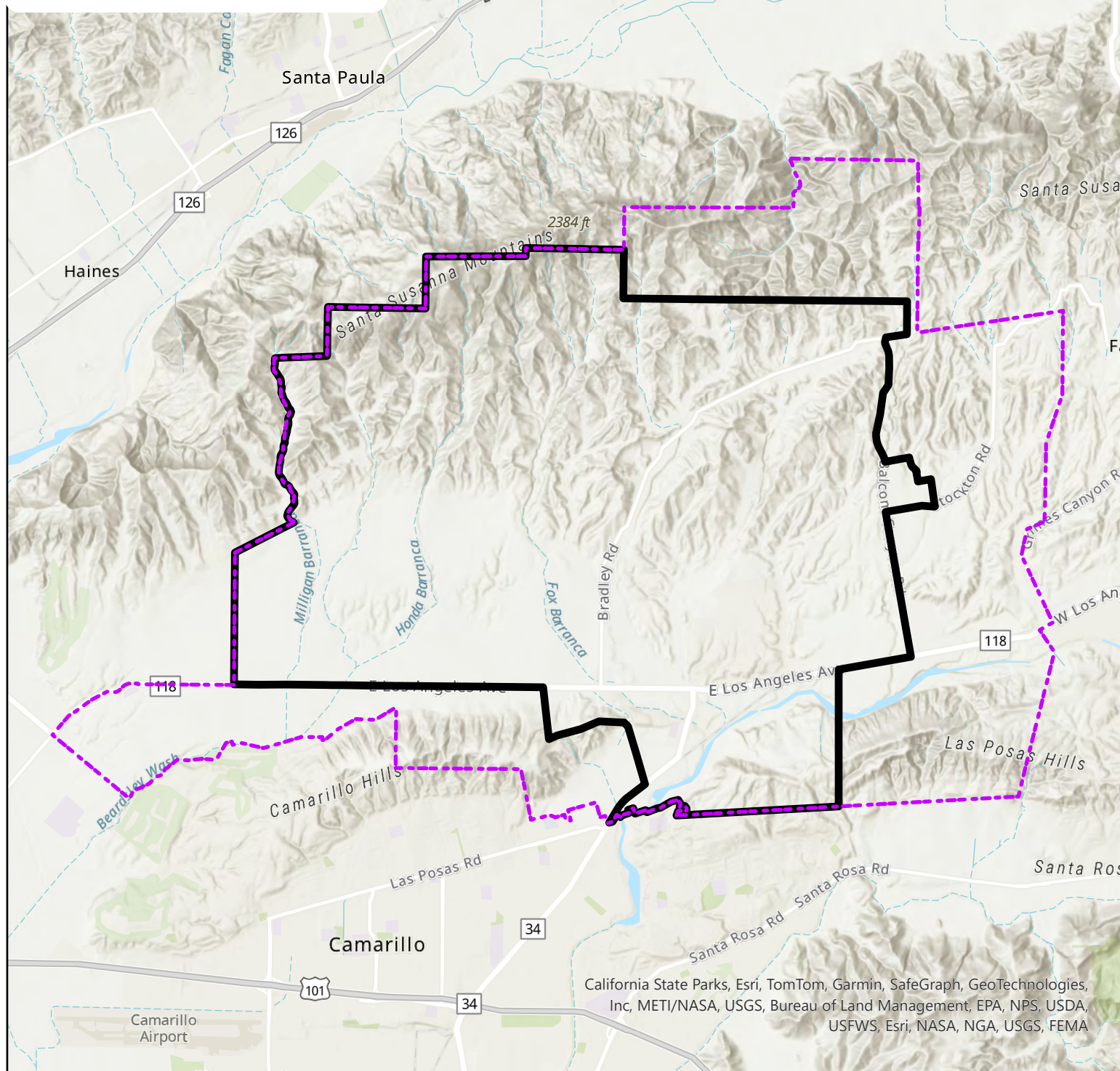
0 200 400 800 Feet

Disclaimer: this map was created by the Ventura County Resource Management Agency Information Systems GIS, which is designed and operated solely for the convenience of the County and related public agencies. The County does not warrant the accuracy of this map and no decision involving a risk of economic loss or physical injury should be made in reliance therein



Del Norte 2-001, Del Norte 3-013,
 Las Posas 2-001, Las Posas 3-003,
 Las Posas 3-004, Las Posas 3-008,
 Somis 2-001, Somis 2-003, Somis 2-004,
 Somis 2-005, Somis 2-006, Somis 2-007,
 Somis 2-008, Somis 2-009, Somis 2-010,
 Somis 2-011, Somis 2-012, Somis 2-013,
 Somis 2-014, Somis 2-015, Somis 2-016,
 Somis 2-017, Somis 2-018, Somis 2-019,
 Somis 3-001, Somis 3-002, Somis 3-003,
 Somis 3-004, Somis 3-005, Somis 4-001,
 Somis 4-002

 Existing Somis MAC Boundary
 Selected Election Precincts



Ventura County
 Resource Management Agency
 Information Systems GIS Services
 Map created on 5/21/2024



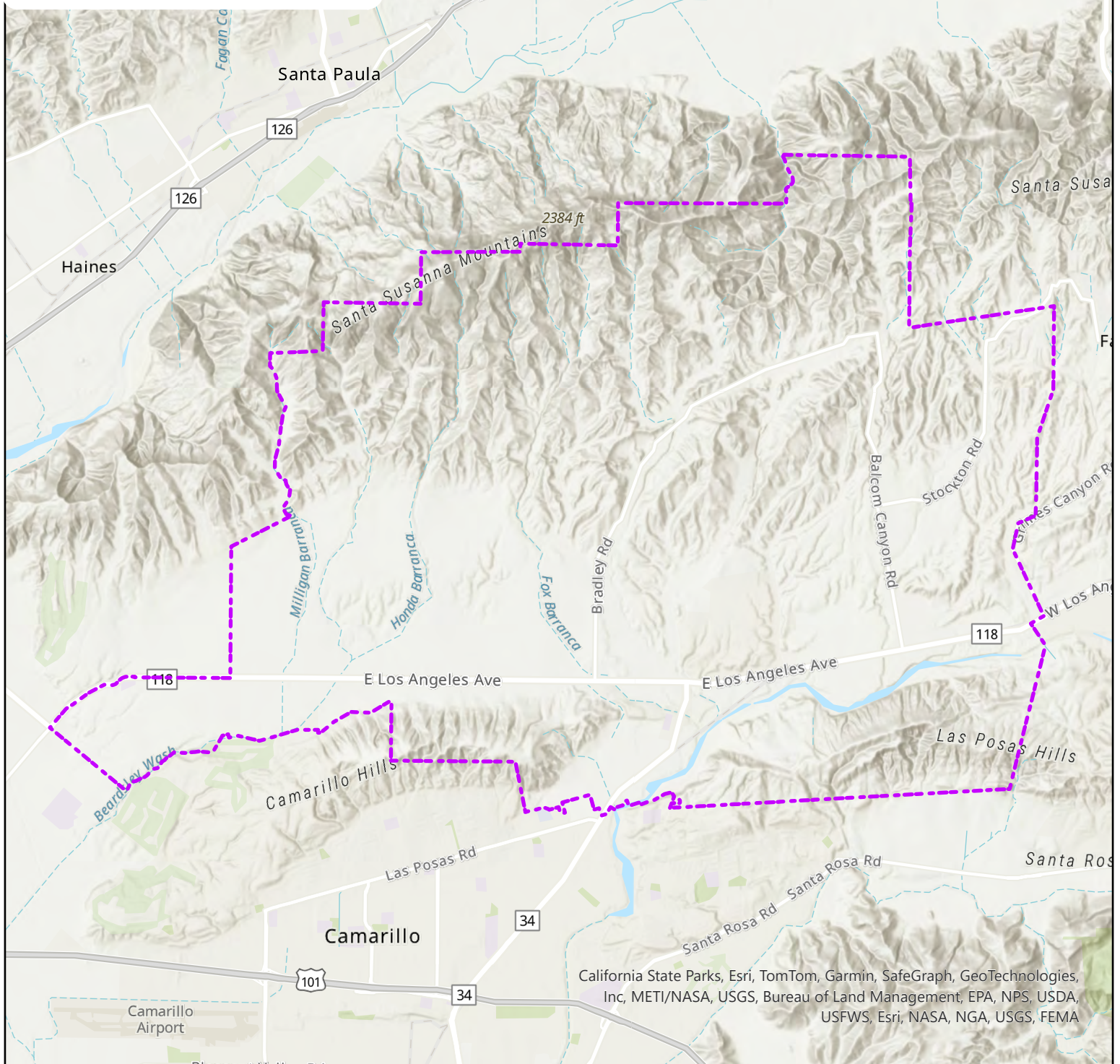
County of Ventura Somis Municipal Advisory Council

0 3,000 6,000 12,000 Feet
 Disclaimer: this map was created by the Ventura County Resource Management Agency Information Systems GIS, which is designed and operated solely for the convenience of the County and related public agencies. The County does not warrant the accuracy of this map and no decision involving a risk of economic loss or physical injury should be made in reliance therein



Del Norte 2-001, Del Norte 3-013,
 Las Posas 2-001, Las Posas 3-003,
 Las Posas 3-004, Las Posas 3-008,
 Somis 2-001, Somis 2-003, Somis 2-004,
 Somis 2-005, Somis 2-006, Somis 2-007,
 Somis 2-008, Somis 2-009, Somis 2-010,
 Somis 2-011, Somis 2-012, Somis 2-013,
 Somis 2-014, Somis 2-015, Somis 2-016,
 Somis 2-017, Somis 2-018, Somis 2-019,
 Somis 3-001, Somis 3-002, Somis 3-003,
 Somis 3-004, Somis 3-005, Somis 4-001,
 Somis 4-002

 Selected Election Precincts



California State Parks, Esri, TomTom, Garmin, SafeGraph, GeoTechnologies, Inc, METI/NASA, USGS, Bureau of Land Management, EPA, NPS, USDA, USFWS, Esri, NASA, NGA, USGS, FEMA



Ventura County
 Resource Management Agency
 Information Systems GIS Services
 Map created on 5/21/2024





County of Ventura Somis Municipal Advisory Council

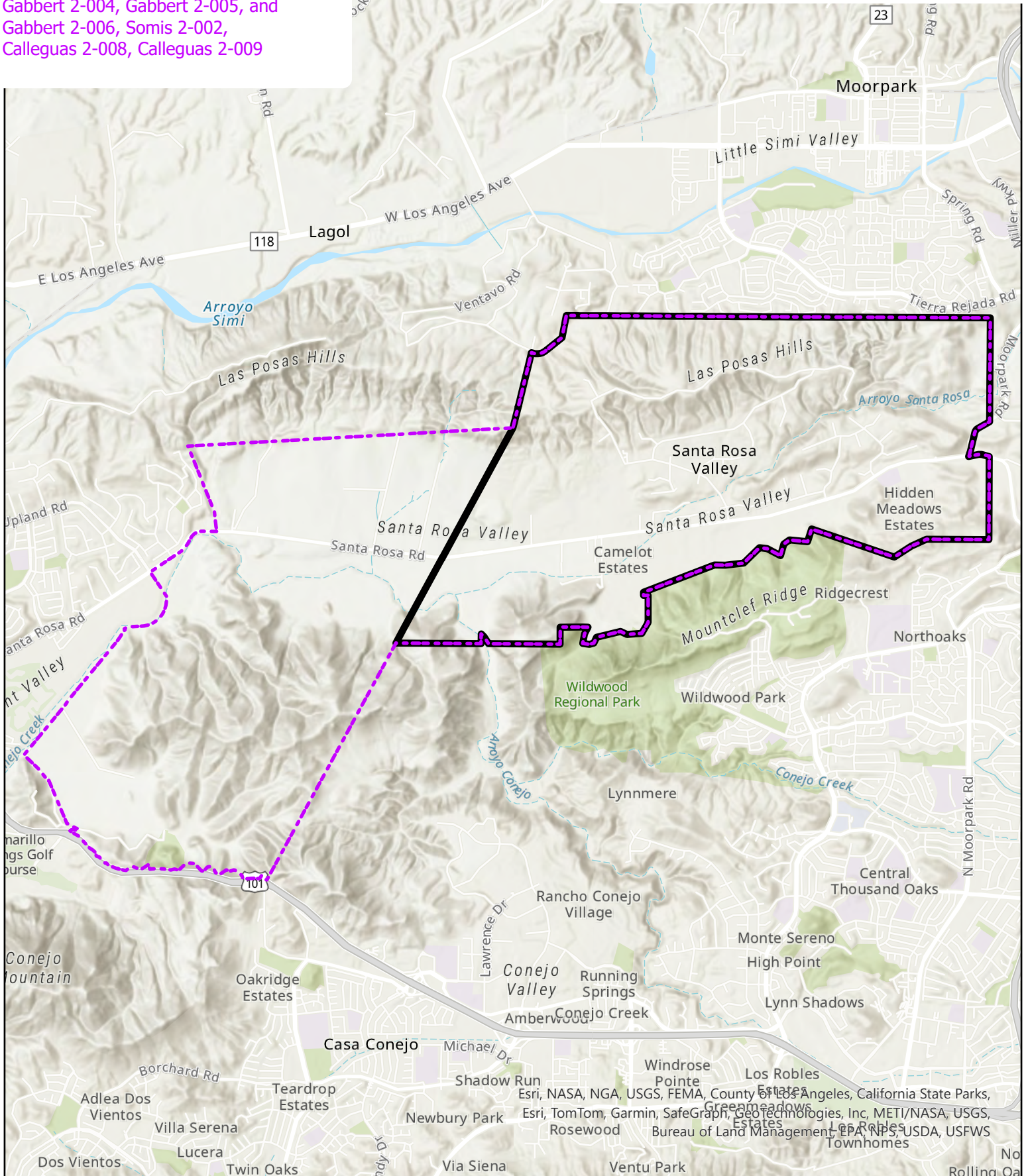
0 3,000 6,000 12,000 Feet

Disclaimer: this map was created by the Ventura County Resource Management Agency Information Systems GIS, which is designed and operated solely for the convenience of the County and related public agencies. The County does not warrant the accuracy of this map and no decision involving a risk of economic loss or physical injury should be made in reliance therein



Santa Rosa 2-001, Santa Rosa 2-002, Santa Rosa 2-003, Santa Rosa 2-004, Santa Rosa 2-005, Santa Rosa 2-006, Gabbert 2-004, Gabbert 2-005, and Gabbert 2-006, Somis 2-002, Calleguas 2-008, Calleguas 2-009

 Existing Santa Rosa Valley MAC Boundary
 Selected Election Precincts



Ventura County
 Resource Management Agency
 Information Systems GIS Services
 Map created on 5/21/2024



County of Ventura Santa Rosa Municipal Advisory Council

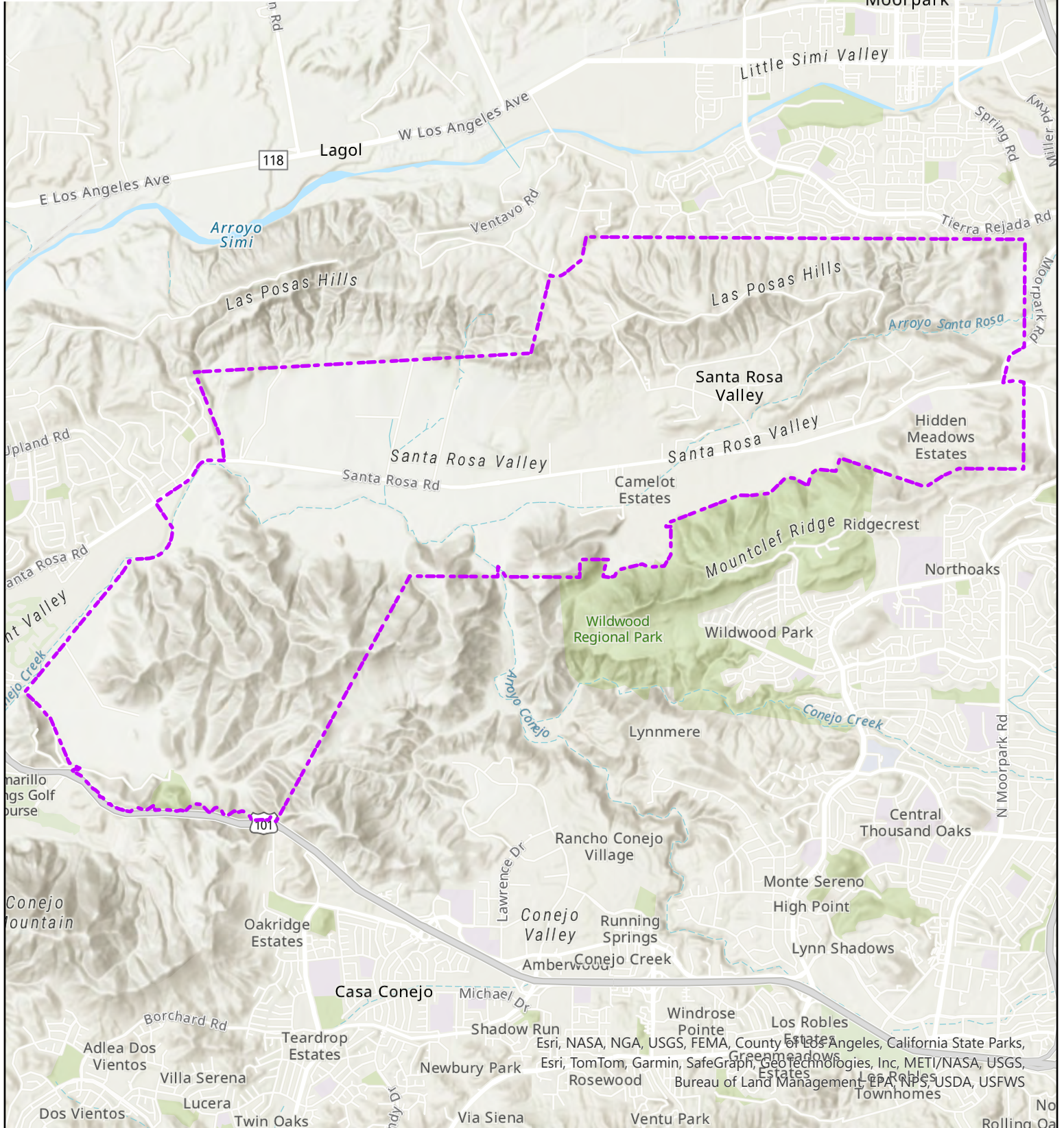


Disclaimer: this map was created by the Ventura County Resource Management Agency Information Systems GIS, which is designed and operated solely for the convenience of the County and related public agencies. The County does not warrant the accuracy of this map and no decision involving a risk of economic loss or physical injury should be made in reliance therein



Santa Rosa 2-001, Santa Rosa 2-002,
 Santa Rosa 2-003, Santa Rosa 2-004,
 Santa Rosa 2-005, Santa Rosa 2-006,
 Gabbert 2-004, Gabbert 2-005, and
 Gabbert 2-006, Somis 2-002,
 Calleguas 2-008, Calleguas 2-009

 Selected Election Precincts



Ventura County
 Resource Management Agency
 Information Systems GIS Services
 Map created on 5/21/2024



County of Ventura Santa Rosa Municipal Advisory Council

0 1,500 3,000 6,000 Feet

Disclaimer: this map was created by the Ventura County Resource Management Agency Information Systems GIS, which is designed and operated solely for the convenience of the County and related public agencies. The County does not warrant the accuracy of this map and no decision involving a risk of economic loss or physical injury should be made in reliance therein

