

County of Ventura Active Transportation Plan



Board of Supervisors Presentation

February 6, 2024

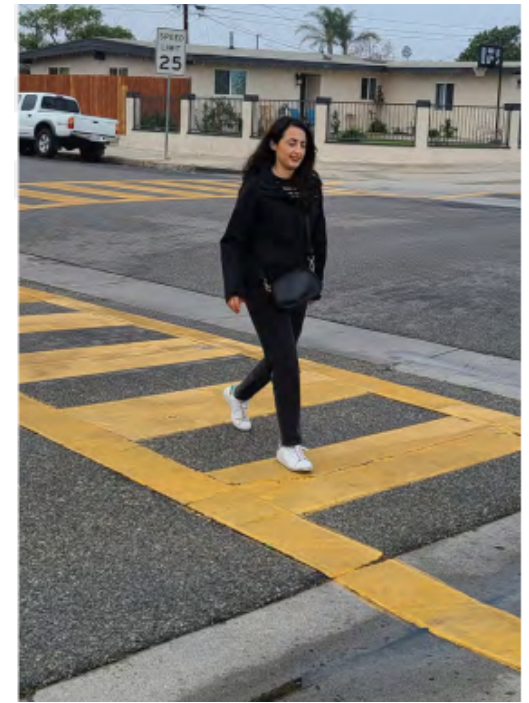
Presented by Anitha Balan

Agenda

- Need for an Active Transportation Plan (ATP)
- Funding Background
- ATP Development
- Board Approved Prioritization Criteria
- Community Collaboration
- Demonstration Projects (Districts 1 -5)
- Top 25 Prioritized projects
- Recommended Board Actions

Active Transportation Plan (ATP)

- Provides a roadmap for constructing pedestrian and bicyclist facilities to
 - create a safe and convenient active transportation network
 - connect more people to jobs, goods, services, and public transit without automobiles
- Identifies and prioritizes highest need improvements
 - Safe Routes to School
 - Transit connections (first & last mile)
- Works to meet the Countywide goals of improved public health, reduced Vehicle Miles Travelled (VMT), and reduced GHG emissions.



Why now?

- 2008 Assembly Bill 1358 Complete Streets Act
- Required by the 2040 General Plan
- Required for future ATP grants
- Public desire for increased walking and biking opportunities
- Grant funding available – Caltrans Sustainable Communities Grant
 - \$729,550 Grant Funds
 - \$95,459 Road Fund



ATP Development

- Identified Existing Conditions
- Community Collaboration
 - Established Project website [Ventura County - Active Transportation Plan \(atplan.vcpublishpublicworks.org\)](https://atplan.vcpublishpublicworks.org)
 - Community meetings
 - Received /surveys/ public input on Interactive maps
 - Data Collection, Walk Audits, Bicycle and Pedestrian Counts
 - Demonstration Projects
- Incorporated Previous Plans & Prioritization Criteria
- Incorporated Complete Streets Concepts



ATP Development

- Created a prioritized list of projects
 - Pedestrian Improvements
 - Included Safe Routes to Schools
 - Transit First & Last mile
 - Bike Lane Improvements
 - Other Transit and Traffic Safety Improvements
- Project list is unconstrained
 - Implementation is subject to funding, right-of-way, and project feasibility



Incorporated Previous BOS Approved Plans

- Recommendations of the 2008 Bicycle Master Plan
- Recommendations of the 2017 VCTC Wayfinding Plan
- 2019 Board-approved bicycle and pedestrian priority criteria

Incorporated 2019 BOS Approved Prioritization Criteria

County of Ventura
PWA-TD

Prioritization Criteria for Pedestrian Facility Improvement Projects								
Category	Description	Max Points	High	Points	Medium	Points	Low	Points
Safety & Comfort	Roadway Speed	35	> 45 mph	10	30-45 mph	7	<30 mph	5
	Pedestrian related collisions		Non-intersection collisions when not crossing the street	10	Uncontrolled intersection collisions	7	Any other collisions	5
	Average pedestrian counts		TBD	10	TBD	7	TBD	5
	Average daily vehicle traffic counts		>5,000	5	2,000-5,000	3	<2,000	2
Needs Assessment	School walking zones	45	<0.25 mile	10	0.25 - 0.5 mile	7	0.5 - 1.0 mile	5
	Gap Closure		Within 2 blocks	10	Within 3 blocks	7	Within 4-5 blocks	5
	Land Use		Urban/ Residential/ mixed use	10	Urban Residential	5	Rural Residential	2
	Connectivity to Points of Interest (POI) or other modes of transportation		> 2 facilities	10	2 facilities	7	1 facility	5
	Disadvantaged Community		Yes	5	N/A	N/A	No	0
Partnership	Community Support received from schools, residents, local businesses, and MAC/HOA's.	5	Support	5	Neutral	3	Oppose	0
Constructability	Constructability	10	Majority of project within ROW/drainage improvements not required.	10	Moderate drainage improvements and/or utility relocations.	5	Significant ROW acquisition, utility relocation, and/or drainage improvements	1
Funding Leverage	Existing Federal/State/Local Funding	5	Yes	5	NA	NA	No	0
Total			100					

County of Ventura
PWA-TD

Prioritization Criteria for Other Bike Lanes								
Category	Description	Max Points	High	Points	Medium	Points	Low	Points
Safety & Comfort	Roadway Speed	45	> 45 mph	10	30-45 mph	7	<30 mph	5
	Travel Lane Width		10 ft or less	10	11 ft	7	12 feet or greater	5
	Collisions involving a bicycle (in last 3-years)		>3 collisions	10	2-3 collisions	7	1-2 collisions	5
	Average daily bicycle counts		TBD	10	TBD	7	TBD	5
	Average daily vehicle traffic counts		>5,000	5	2,000-5,000	3	<2,000	2
Route Readiness	Constructability	30	Cat B	15	Cat C1	10	Cat C2	5
	Connectivity to Existing Bike Lanes		< 1 mile	5	1-3 miles	3	>3 miles	2
	Identified in a Bike Plan(s) (SMP, BWP)		Both BWP & BMP	10	BWP BMP	6	None	0
Sustainability & Economic Benefit	Population density	20	Urban	5	NA	NA	Rural	3
	Connect to other modes (bus, train)		yes	5	NA	NA	No	0
	Connectivity to Points of Interest (POI) within 2 miles (schools, libraries, businesses.)		> 6 facilities	10	3 or 6 facilities	7	<3 facility	5
Partnership	Community Support received from various entities (not individuals) such as cycling clubs, schools, cities, etc.	10	5	10	4-2	5	1	3
Funding Leverage	Existing Federal/State/Local Funding	10	Yes	10	NA	NA	No	0
Total			115					

Updates to Priority Criteria

Cat B - Majority of existing unpaired shoulder meets minimum width to construct Class II bike lanes.

Cat C1 - The existing roadway has narrow shoulders with roadside drainage ditches, utilities, tree obstructions and road realignment may be required.

Cat C2 - In addition to the above challenges for C1, it will also involve major drainage improvements and may impact agricultural land use.

Project Prioritization Criteria for ATP

- Tiered Approach
 - Tier 1 Project
 - Address Safety and comfort
 - Provide connections that are most feasible
 - Community supported
 -
 - Tier 2 and 3 projects (scored lower)
 - Constructability Issues
 - Right-of-Way
 - Utility relocation
 - Drainage
- Funding Availability
- Tier 1, 2, and 3 projects may be combined

Community Collaboration - ATP Web Page



ABOUT

The County of Ventura is developing an Active Transportation Plan (AT Plan) that will serve as a roadmap for implementing pedestrian and bicyclist facilities within the County's unincorporated communities. The AT Plan builds upon existing planning efforts to create a safe and convenient active transportation network that connects more people with jobs, goods, services, and public transit networks without the use of a car. Ventura County's 2040 General Plan highlighted the need for the Ventura County AT Plan to help achieve larger Countywide goals of improving public health and reducing environmental impacts from vehicle miles traveled (VMT) and greenhouse gas (GHG) emissions.

The development of this plan is funded in part by the FY 2020-21 Caltrans Sustainable Transportation Planning Grant Program.



atplan.vcpublicworks.org

- Bilingual Content
- Interactive Public Surveys
- Interactive Public Input Maps
- Community Meeting Presentations
- Public Notices of Meetings
- Demonstration Event Feedback
- Go-Human Event Advertising

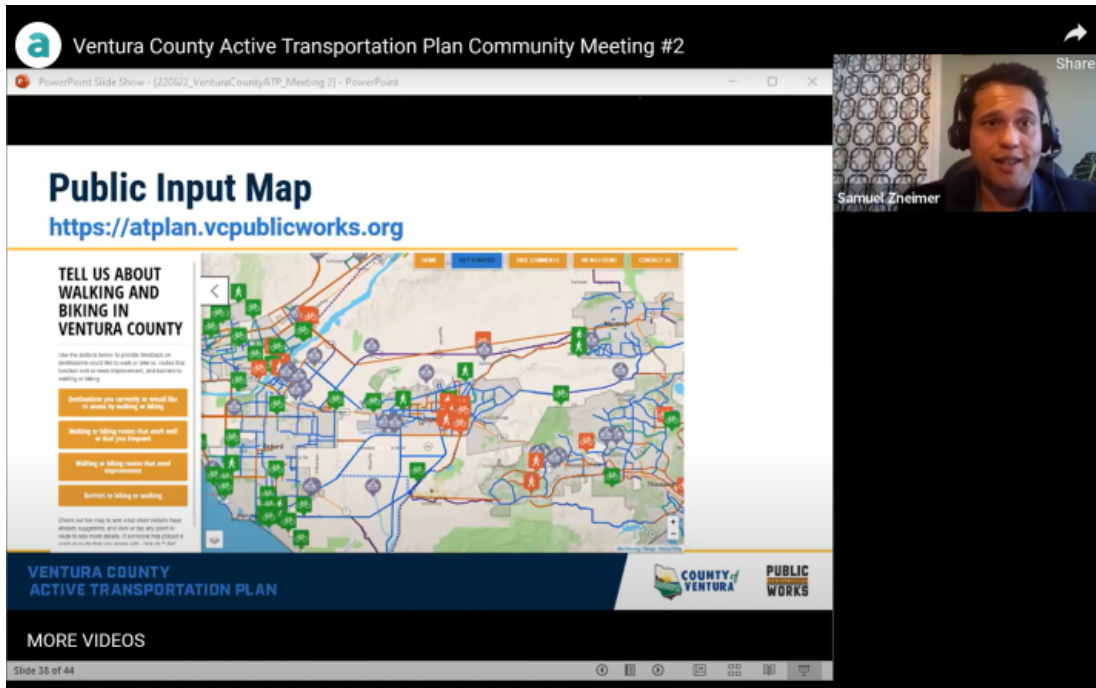
Community Collaboration

➤ Meetings

- 6 TAC Meetings
- 6 CAC Meetings
- 4 Community Meetings

➤ Flyers

- Posted at County, Cities, College, Libraries and Senior Centers
- QR Codes directing to Web Site
- Distributed to County Residences



The County of Ventura is developing an Active Transportation Plan (AT Plan) to construct better pedestrian and bicycle facilities in the County.

The AT Plan builds upon existing planning efforts for infrastructure that creates a safe and more convenient active transportation network to connect more people with jobs, restaurants, services, and the public transit network without the use of a car.

TO LEARN MORE ABOUT THE PROJECT AND TO PROVIDE YOUR INPUT, GO TO

atplan.vcpublishworks.org



El Condado de Ventura está desarrollando un Plan de Transporte Activo (Plan AT) para construir mejores instalaciones para peatones y ciclistas en el condado.

El Plan AT se basa en los esfuerzos de planificación existentes para crear una red de transporte activo segura y más cómoda que conecte a más personas con puestos de trabajo, restaurantes, servicios y redes de transporte público sin necesidad de utilizar el coche.

PARA OBTENER MÁS INFORMACIÓN SOBRE EL PROYECTO Y PARA PROPORCIONAR SU OPINIÓN VISITE

atplan.vcpublishworks.org



Community Collaboration

- Information Sharing
 - Go Human Trainings
 - Council of the Aging
- Community Events
 - Nyeland Acres Bike Rodeo
 - Cyclemania
 - Demonstration Project Pop-Ups
 - City Farmer's Markets



Demonstration Projects



District 1

Curb Extensions - El Rio Drive and Lomita Avenue in front of Meiners Oaks Elementary School



District 2

Curb extensions and painted bike lane buffers on Kanan Road at Doubletree Road in front of Oak Park High School



District 3

Curb extensions at crosswalks at the intersection of Eucalyptus Avenue and Nyeland Avenue

Demonstration Projects



District 4

High visibility crosswalks & Bicycle sharrows at the intersection of Oak Knolls Road and Katherine Road in front of Knolls Park.



District 5

Curb extensions & Bike sharrows at the intersection of Sunset Lane and Channel Islands Boulevard in front of Hollywood Beach Elementary School.

ATP Development Timeline



Project Kickoff

August 26, 2021

Existing Conditions

September 1, 2021- December 1, 2021

Public Outreach and Engagement

January 1, 2022 – July 1, 2023

Analysis and Initial Recommendation Development

January 1, 2022- December 1, 2022

Refining Recommendation and Draft AT Plan Development

January 1, 2023 – July 1, 2023

Final AT Plan Recommendation and Final Draft AT Plan

July 1, 2023 – January 31, 2024

Final AT Plan Presented to Board

February 6, 2024

Prioritized List of Sidewalk Projects (Top 25)

Street Name	Start_street	End_street	Recommendation	Pri Score	OtherLists	Mileage
Alvarado St	Collins St	Helsam Ave	Sidewalk on both sides	78	SRTS	0.34
Cortez St	Corsicana Dr	South end Rio Plaza school	Sidewalk on E side	72	SRTS	0.04
Helsam Ave/George St	Alvarado St	Simon Way	Sidewalk on both sides	70	SRTS	0.24
Padre Juan Ave	Lomita Ave	El Roblar	Sidewalk on both sides	69	SRTS	0.39
Center St	Via Fustero	Orchard St	Sidewalk on both sides	67	SRTS	0.06
Via Fustero	Main St	Center St	Sidewalk on E side	67	SRTS	0.27
Camulos St	Church St	Main St	Sidewalk on both sides	67	SRTS	0.08
Will Ave	Balboa St	George St	Sidewalk on both sides	67	SRTS	0.22
Camino Flores	Paseo Del Robledo	Camino Dos Rios	Sidewalk on both sides	67	SRTS	0.07
El Roblar Dr	La Luna Ave	Lomita Ave	Sidewalk on N side	65	SRTS	0.44
Stroube St	State Route 232	Rose Ave	Sidewalk on both sides	64	SRTS	0.86
Larmier Ave	State Route 33	Sunset Ave	Sidewalk on S side	63	SRTS	0.36
Balboa St	Simon Way	End of Street	Sidewalk on E side	62	SRTS	0.12
George St	Simon Way	End of street	Sidewalk on both sides	62	SRTS	0.13
Pueblo Ave	Lomita Ave	El Roblar Dr	Sidewalk on both sides	61	SRTS	0.38
El Roblar Dr	Lomita Ave	State Route 33	Sidewalk missing portions N & S sides	60	SRTS	0.32
Alvarado St	County boundary	Collins St	Sidewalk on W side	60	SRTS	0.29
Helsam Ave	Balboa St	Alvarado St	Sidewalk on both sides	60	SRTS	0.14
Salem Ave	Balboa St	George St	Sidewalk on both sides	60	SRTS	0.25
Lemar Ave	Balboa St	George St	Sidewalk on both sides	60	SRTS	0.20
Main St	Market St	Center St	Sidewalk on E side	60	SRTS	0.08
Short St	End of Street	Old Ventura Ave	Sidewalk on at least one side	59	SRTS	0.12
Santa Ana Blvd	Monte Via	State Route 33	Missing Sidewalk both sides	58	Netwo	0.36
Main St	State Route 126	Via Fustero	Sidewalk on both sides	58	SRTS	0.54
Alelia Ave	Violeta St	End of Street	Sidewalk on both sides	58	Netwo	0.04

Prioritized List of Bike Lane Projects (Top 25)

Street	Start	End	Mileage	Recommendation	Other_lists	Pri Rank
Telegraph Rd	County Limit	County Limit	4.16	2b	SRTS	83
Olivas Park Dr	County Limit	County Limit	0.79	2b	Network	81
Potrero Road W	Old Hueneme Rd	Oxnard St	1.14	2	Network	76
Santa Rosa Rd	Las Posas Rd	Moorpark Rd	1.85	2b	SRTS	75
Potrero Rd	Oxnard St	County Limit	3.48	1	Network	73
Harbor Blvd	County Limit	County Limit	2.00	2b	Network	73
Moorpark Rd	Santa Rosa Rd	Tierra Rejada Rd	1.38	2b	Network	73
Rose Ave	Central Ave	State Route 118	1.52	2b	SRTS	73
Howe Rd	Torrey Rd	Torrey Rd	0.20	2	Network	72
Hueneme Rd	County Limit	Lewis Rd	6.32	2b	Network	72
Torrey Rd	Guiberson Rd	Howe Rd	0.83	2	Network	71
Santa Rosa Rd	Yucca Dr	Glenside Ln	1.03	2b	Network	70
Olivas Park Dr	Victoria Ave	County Limit	0.65	2b	Network	70
Kanan Rd	County Limit	Oak Hills Rd	1.32	2b	SRTS	70
Los Angeles Ave	Nardo St	Highway 118	0.10	3	Network	69
Encino Dr	Creek Rd	State Route 33	1.93	2	Network	69
Gonzales Rd	Harbor Blvd	Victoria Ave	1.87	2b	SRTS	69
Tierra Rejada Rd	County Boundary	County Limit	2.00	2b	Network	69
Santa Rosa Rd	Yucca Dr	County Limit	2.18	2b	Network	68
Rose Ave	Corsicana Dr	Simon Way	0.19	2b	SRTS	68
Read Rd	Moorpark Rd	Sunset Valley Rd	0.74	2	Network	67
Nardo St	Highway 118	Campanula Ave	0.38	2b	Network	67
Laguna Rd	Wood Rd	Lewis Rd	2.64	2	Network	66
Sunnycrest Dr	Aspen Ridge Ct	Park Springs Ct	0.13	2b	Network	66
La Luna Ave	State Route 150	Lomita Ave	2.03	2	SRTS	65

Recommendation Legend:

- 1 - Class 1 Bike lane
- 2 - Class II Bike lane
- 2b - Buffered Class II Bike lane

atplan.vcpublishworks.org

The full list of project recommendations is available in Appendix E of the ATP

Recommended Board Actions

- Approve County of Ventura Active Transportation Plan (ATP)
- Find that Approval of the ATP is Statutorily Exempt from the California Environmental Quality Act.

Questions?
