



*Ventura County Waterworks District No. 16*

# **Piru Proposed Sewer Rate Increases and Standby Charges on the Tax Roll Fiscal Year 2024-25**

---

Presentation to Board of Supervisors  
Joe Pope  
Director, Water and Sanitation Department  
County of Ventura Public Works Agency

# Ventura County Waterworks District No. 16

- The County of Ventura Water and Sanitation Department is responsible for the operation and maintenance of the sewer system.
- Formed on May 8, 1972.
- Until March 2010, the District owned and managed a secondary wastewater treatment plant with a design capacity of 0.26 MGD. The plant was operated and maintained by Ventura Regional Sanitation District and has been replaced with a new, 0.50 MGD wastewater treatment plant which the District has been operating and maintaining since early 2010.

**District Size:  
~300 Acres**

**Capacity  
(MGD)  
.50**

**Sewer Mains:  
~9 Miles**

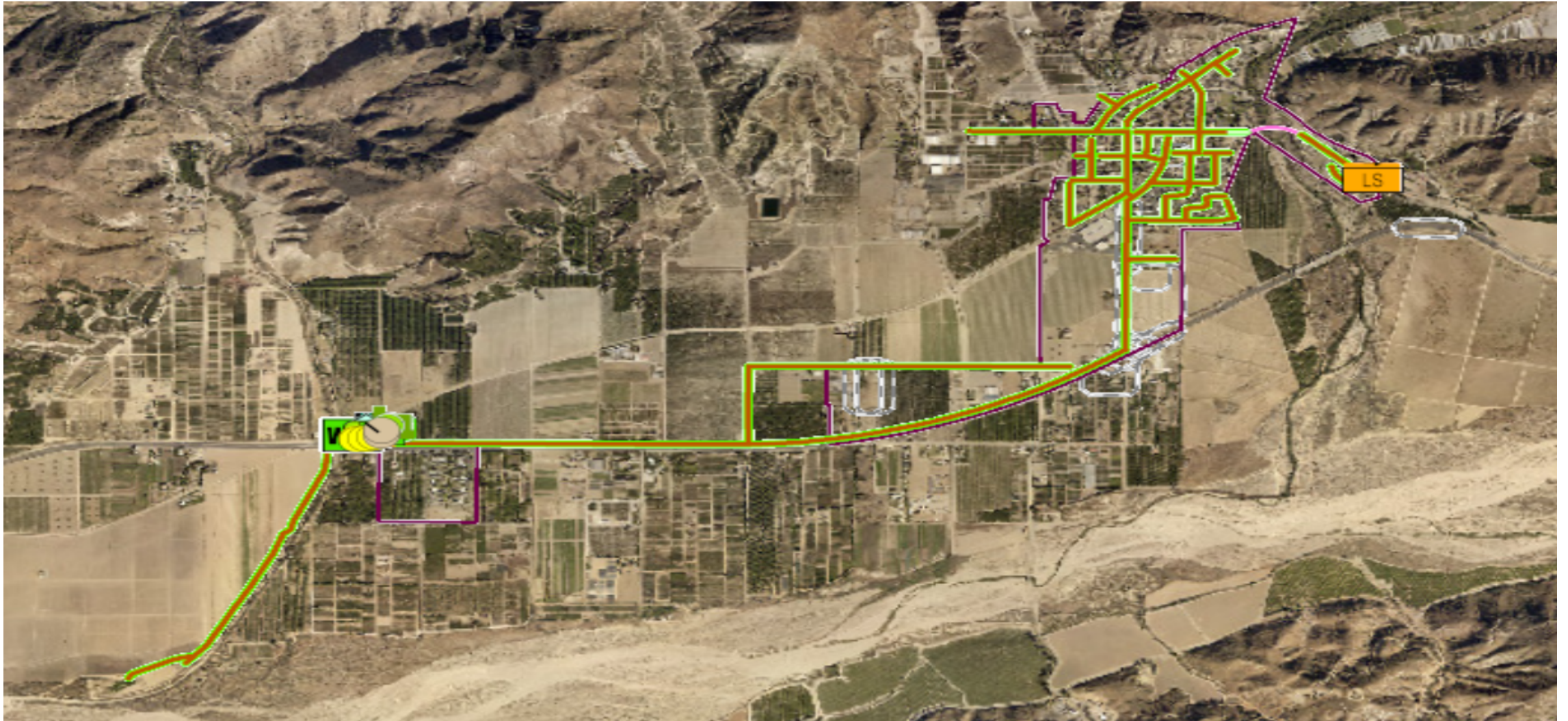
**Sewer Lift  
Stations: 2**

**Sewer Service  
Connections:  
~543**





# Ventura County Waterworks District No. 16 Service Area



# Sewer Rate Study Assumptions:

- 3-5% inflationary increases in labor, power, and treatment costs
- Maintain appropriate financial reserves of 25% of operating expenses
- Maintain appropriate operating expenses of 10% of operating revenue
- Continue re-payment of \$2 million general fund loan related to the 2009 plant construction by Fiscal Year 2028

**Piru Sewer Services**

Proposed Sewer Service Charges and Sewer Standby Charges Fiscal Year 2024-25

- 5% increase in the sewer service charges

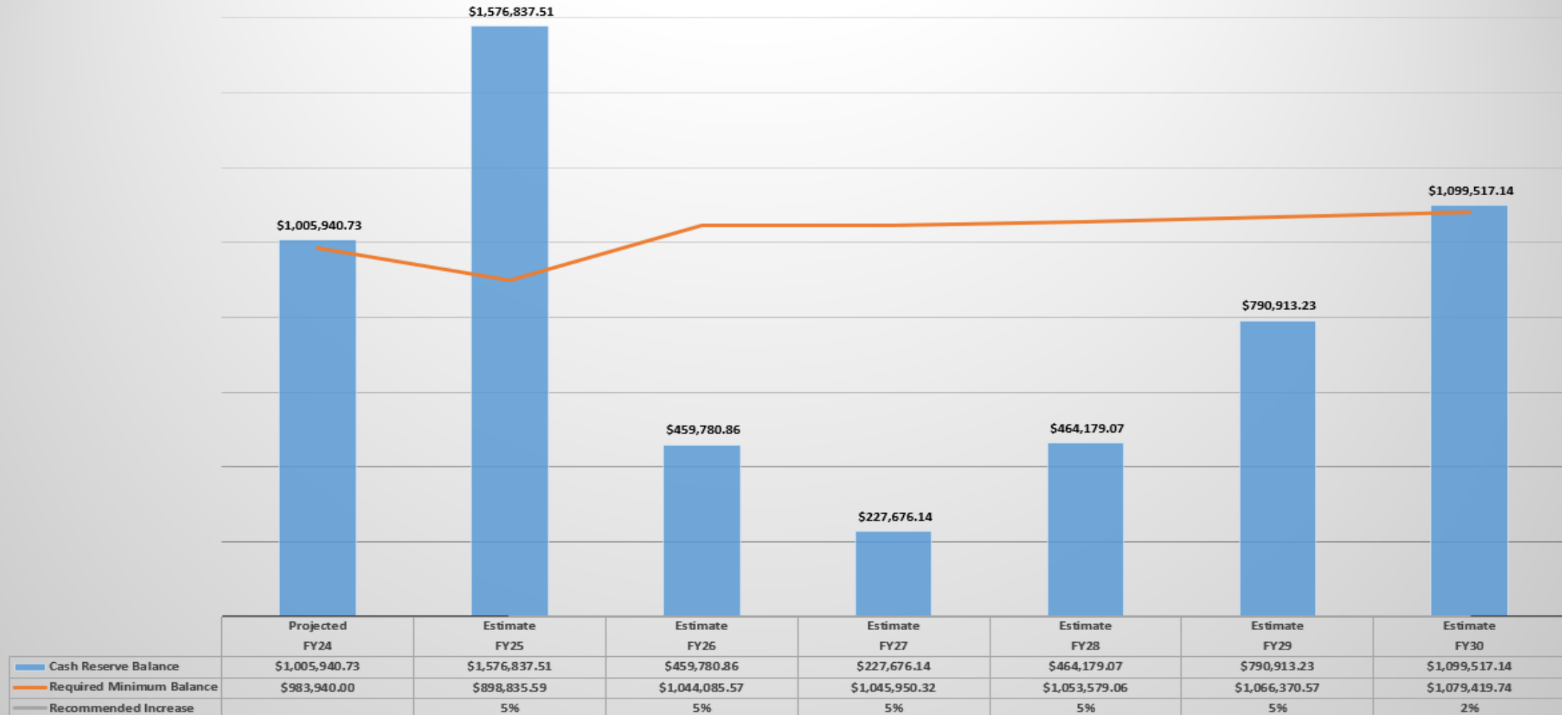
<b>Current Rates FY 2023-24</b>	<b>Proposed Rates FY 2024-25</b>
<b>\$109.55 per month</b>	<b>\$115.02 per month</b>
<b>\$1,314.54 per year</b>	<b>\$1,380.24 per year</b>

- Increases in sewer service charges are subject to the majority protest provisions of Proposition 218 outlined in California Constitution Article XIII D, Section 6
  - Prop 218 was mailed on or before April 15, 2023
- Report sets forth the total amount of sewer service charges proposed for FY 2024-25 and describes how the sewer service charge was computed
- Maintains the sewer standby charges at the same levels set in FY 1996-97
- Continued collection of the subject sewer service charges and sewer standby charges as part of the annual general County tax roll

Piru Sewer Services

Financial Impact of Proposed and Recommended Rates

WW#16 Piru Cash Reserve Forecast





## Wastewater Planned Operations and Maintenance

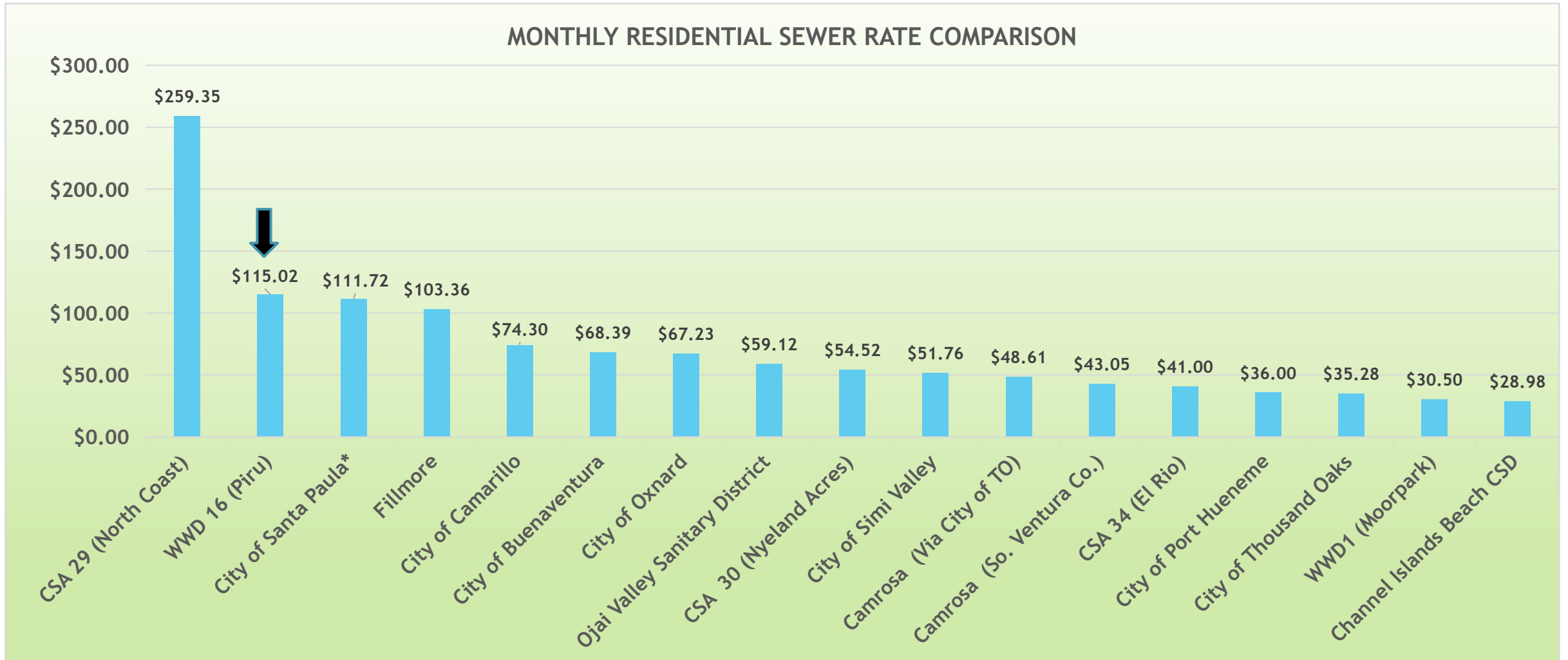
### **Future Planned Capital Construction Projects Include:**

- Improvement for sludge dewatering area

### **FY23-24 Accomplishments:**

- Completed construction of Piru Wastewater Tertiary Desalination Treatment Facility
- Installed Filter Belt Press for biosolids management
- Tesla Battery Energy Storage System Installed and Operating

## Piru Sewer Services



\*Santa Paula rates includes a water usage charges, estimating 12 HCF per household



# Recommendations

- Approve 5% Sewer Rate Increase
- Maintain sewer standby charges at same levels as FY 1996-97
- Approve continued placement of sewer charges on the general County tax roll



# QUESTIONS