

Ventura County, California
Resource Management Agency
GIS Development & Mapping Services
Map created on 10-12-2023

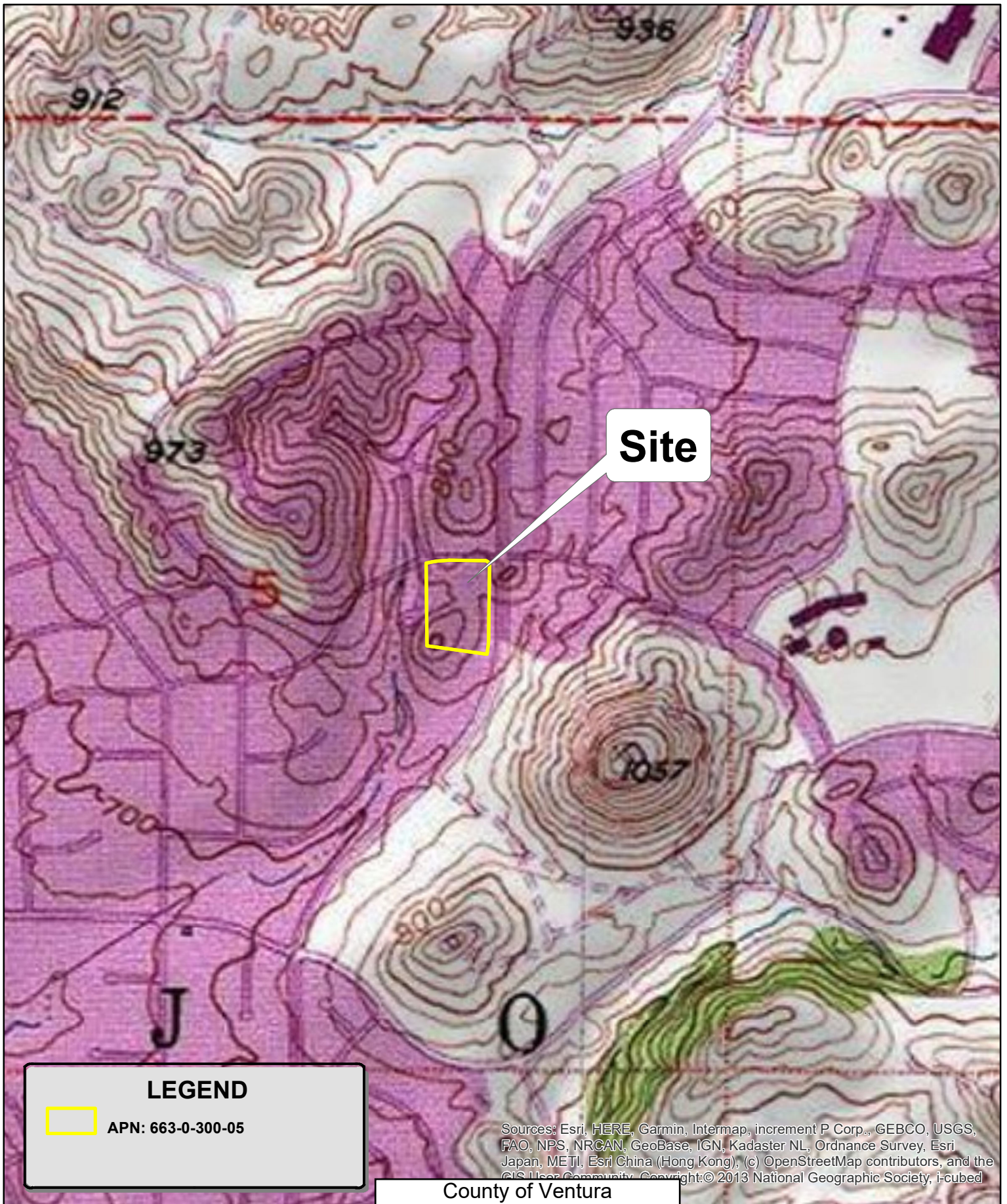


County of Ventura
Planning Commission Hearing
Case No. PL23-0054
Exhibit 2 - Maps


0 10,000 20,000 Feet

Disclaimer: This Map was created by the Ventura County Resource Management Agency, Mapping Services - GIS which is designed and operated solely for the convenience of the County and related public agencies. The County does not warrant the accuracy of this map nor decision involving a risk of economic loss or physical injury should be made in reliance thereon.





LEGEND

 **APN: 663-0-300-05**

Sources: Esri, HERE, Garmin, Intermap, increment P Corp., GEBCO, USGS, FAO, NPS, NRCAN, GeoBase, IGN, Kadaster NL, Ordnance Survey, Esri Japan, METI, Esri China (Hong Kong), (c) OpenStreetMap contributors, and the GIS User Community. Copyright: © 2013 National Geographic Society, i-cubed

County of Ventura
Planning Commission Hearing
Case No. PL23-0054
Exhibit 2 - Maps
Topo Map

0 250 500 Feet

Disclaimer: This Map was created by the Ventura County Resource Management Agency, Mapping Services - GIS which is designed and operated solely for the convenience of the County and related public agencies. The County does not warrant the accuracy of this map and no decision involving a risk of economic loss or physical injury should be made in reliance thereon.



County of Ventura
Resource Management Agency
Development & Mapping Services
Map created on 10-12-2023
Source: Newbury Park U.S.G.S.
7.5 Minutes Quadrangle
Contour Interval = 20 ft





MARIAN AV

CAMINO MANZANITAS

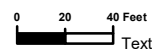
N LYNN RD

663-0-300-05

County of Ventura
Planning Commission Hearing
Case No. PL23-0054
Exhibit 2 - Maps
Aerial Photography
PL23-0054



Ventura County, California
Resource Management Agency
GIS Development & Mapping Services
Map Created on 10-12-2023
Source: Vexcel 2022



Disclaimer: This Map was created by the Ventura County Resource Management Agency, Mapping Services - GIS which is designed and operated solely for the convenience of the County and related public agencies. The County does not warrant the accuracy of this map and no decision involving a risk of economic loss or physical injury should be made in reliance thereon.



RH

