

July 25, 2024Terry Theobald, CIO
County of Ventura

RE: Change Order #2

Dear Terry:

On behalf of Jory Wolf, VP Digital Innovation, EN Engineering, LLC (EN) is pleased to submit this Change Order #2 to provide additional design engineering services to the County of Ventura. We are confident that EN's expertise in working with your team will result in continues success.

EN proposes the following execution plan as depicted in three attachments:

Santa Clarita Vast/CVIN extension/interconnect	
Additional new design further east on Rye Canyon Road	
Interconnect with existing City of SC vault	
Interconnect with existing CVIN/Vast vault	
LF	1422

State of CA CDT has moved MMBI vault location to a location approximately 1,400 feet further east than shown on preliminary MMBI maps.

Fillmore - ADF/MMBI interconnect	
New design for lateral	
new design for new vault/location at designated location	
interconnect with future MMBI	
LF	21

State of CA CDT has requested a lateral and box for a future MMBI Highway 23 route to interconnect with the County/ State joint build.

BV - Lumen/MMBI interconnect	
new design for lateral	
interconnect with new/future Lumen vault at designated location	
LF	68

Exact location of MMBI vault location (existing) has been identified requiring a short lateral connection.

EN Engineering's total cost for this work is \$4,500 + travel and expenses not to exceed \$2,500.

Please let us know how we can assist in preparing and expediting the contract amendment to complete the work in a timely manner



*Comprehensive and Dependable
Engineering, Consulting, and
Automation Services*

Sincerely,

A handwritten signature in black ink that reads 'Jesse Rodriguez'.

Jesse Rodriguez
Executive Vice President
Commercial Operations




*Comprehensive and Dependable
Engineering, Consulting, and
Automation Services*

All work to be completed under the existing Agreement #9152 (ITS SC 48502023112100000003) for Design Engineering dated October 1, 2023 between then County of Ventura, and EN Engineering, LLC.

Agreed and Accepted by:

EN Engineering, LLC

County of Ventura



Signature

Signature

Courtney Violette
Print Name

Print Name

Sr. VP Communications
Title

Title

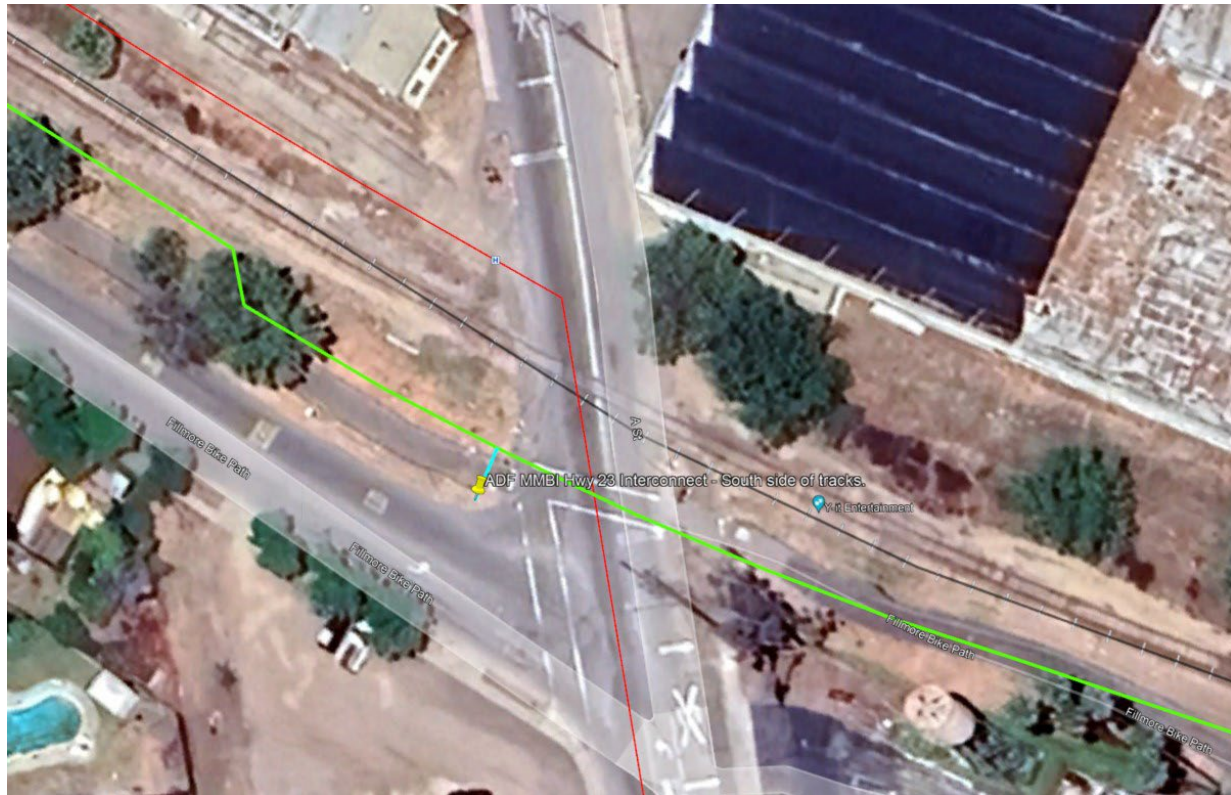
7/3/2024
Date

Date



Headquarters:
28100 Torch Parkway, Suite 400, Warrenville, IL 60555
(630) 353-4000 | info@enengineering.com

Attachment 2: Fillmore - ADF/MMBI interconnect



Attachment 3: BV - Lumen/MMBI interconnect

