

EXHIBIT 3

Map showing the Arroyo Santa Rosa Valley Sub-Basin

Planning Division Assessment Pursuant to General
Plan Policy EV-4.4 and Programs COS-O and HAZ-
O to Identify Suitable Lands and Priority Areas for
the Development of Renewable Energy Generation
and Storage Projects

Case No. PL23-0075

This page is intentionally left blank.

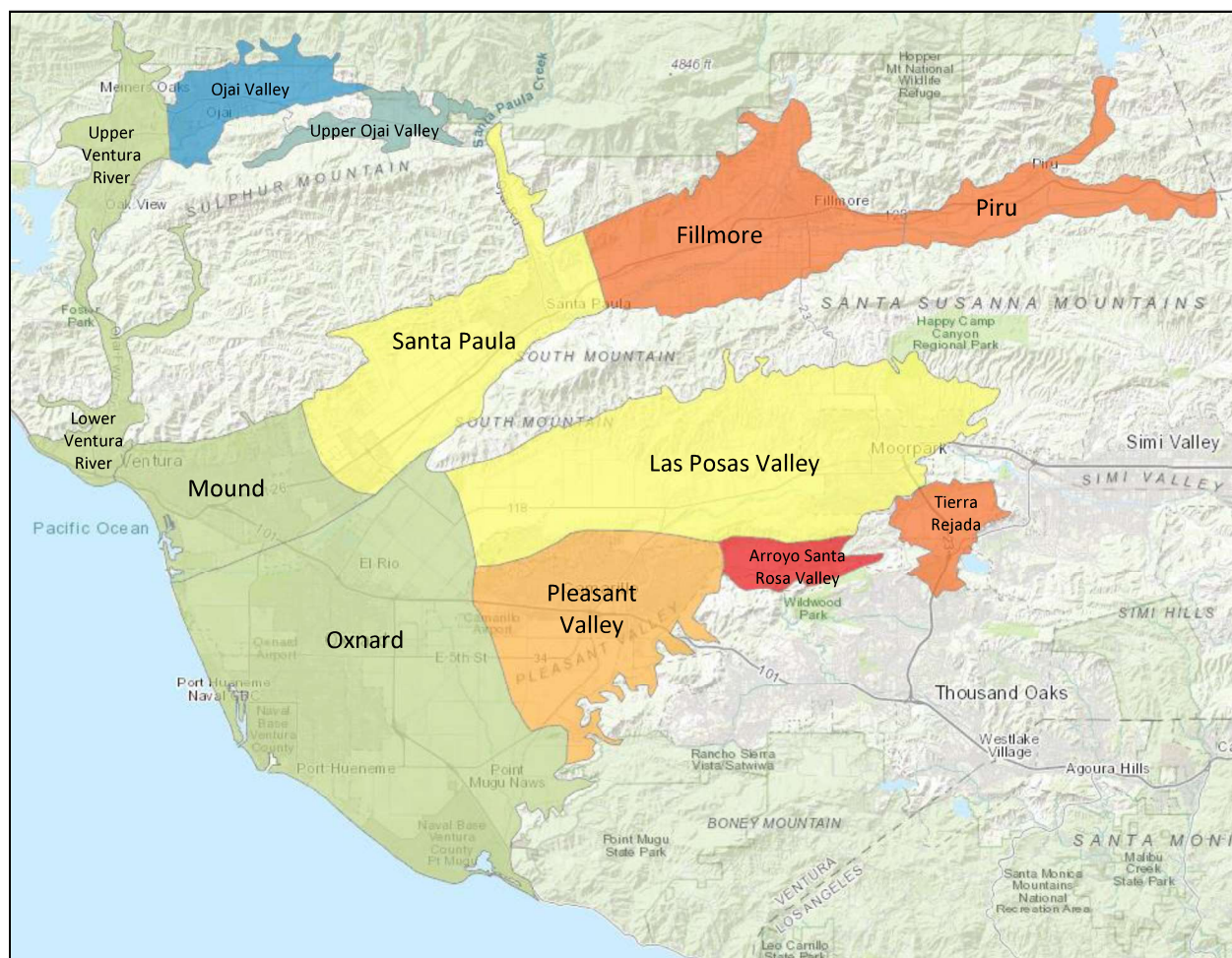


Figure 13. Composite Agriculture Stress scores based on the summary criteria minus the two socioeconomic inputs.